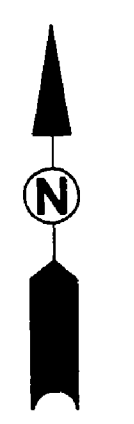
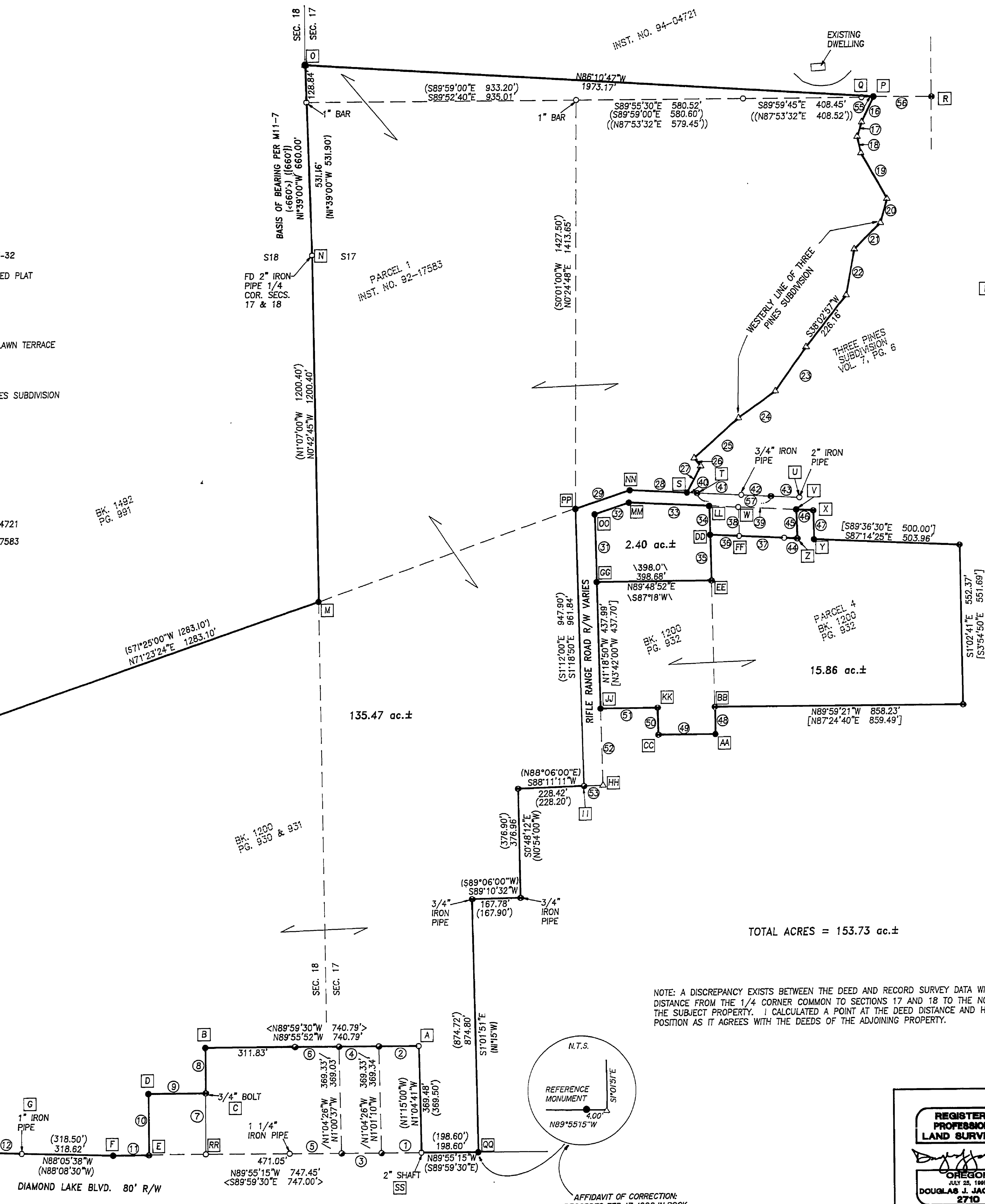
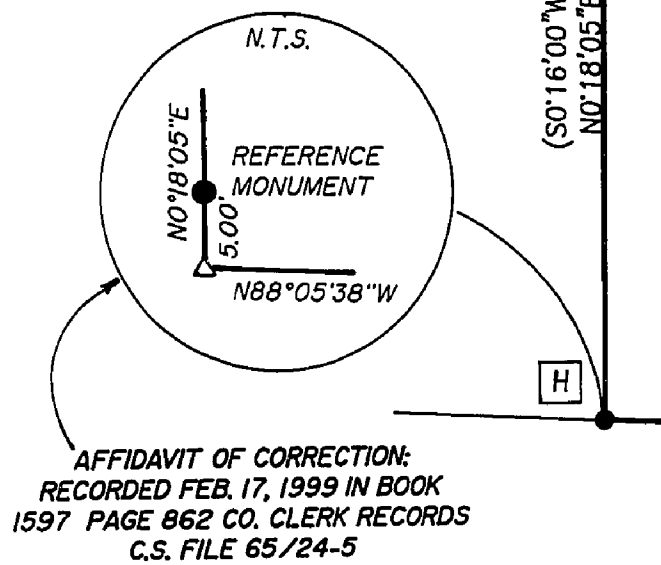
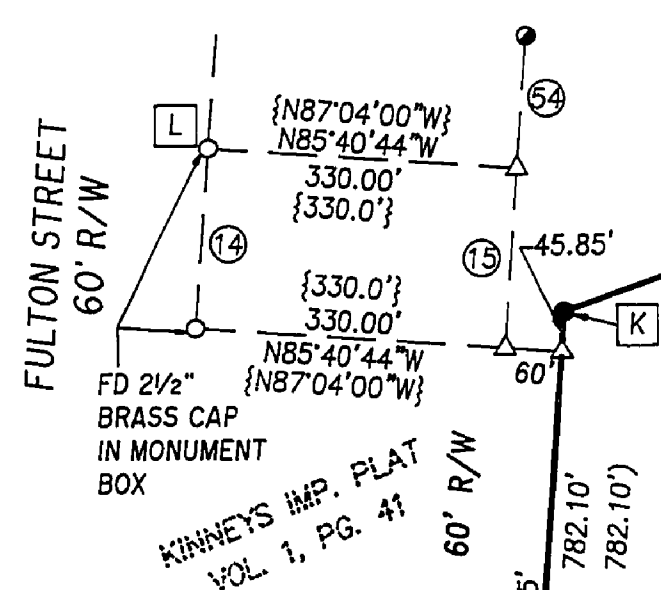


FILED  
Date: 8-3-1998 By: JP  
This survey consists of:  
Map: M129-9  
Narrative:  
Corner Rpt:  
DOUGLAS COUNTY SURVEYOR

Table with 3 columns: #, BEARING - DIST., RECORD. Contains 57 rows of survey data including bearings, distances, and references to previous records.



- LEGEND
• SET 5/8" x 30" IRON ROD W/ CAP MKD T.E. ENG.
○ FD 5/8" IRON ROD UNLESS OTHERWISE NOTED
● FD 1/2" IRON ROD UNLESS OTHERWISE NOTED
● FD 3/4" IRON ROD UNLESS OTHERWISE NOTED
△ CALCULATED POINT
( ) REC. DATA PER M11-7
[ ] REC. DATA PER CS 47/186 - M5-32
{ } REC. DATA PER KINNEY'S IMPROVED PLAT VOL. 1, PG. 41
< > REC. DATA PER M95-43
// REC. DATA PER M105-3
\\ REC. DATA PER PLAT OF NORTHLAWN TERRACE VOL. 4, PG. 12
(( )) REC. DATA PER M98-31
[[ ]] REC. DATA PER PLAT THREE PINES SUBDIVISION VOL. 7, PG. 6
[[ ]] REC. DATA PER M76-27
<< >> REC. DATA PER M25-77
/// REC. DATA PER M33-10
\\ \\ REC. DATA PER M126-40
( ( ) REC. DATA PER CS 55/21-3
( { } REC. DATA PER INST. NO. 94-04721
( < > REC. DATA PER INST. NO. 92-17583



NARRATIVE:
THE PURPOSE OF THIS SURVEY IS TO MONUMENT THE PROPERTY LINES OF THAT PORTION OF THAT PROPERTY DESCRIBED IN BOOK 1200, PAGE 929 LYING NORTH OF DIAMOND LAKE BOULEVARD...
[B] DISTANCE-DISTANCE INTERSECTION FROM POINTS A & C PER M95-43.
[D] DISTANCE-DISTANCE INTERSECTION FROM POINTS C & E PER M11-7.
[F] TURNED RECORD ANGLE FROM POINT E, BACKSIGHTING POINT D, USED PRORATED DISTANCE PER M11-7 FROM POINT E.
[H] TURNED RECORD ANGLE FROM POINT G, BACKSIGHTING POINT F, USED PRORATED DISTANCE PER M11-7 FROM POINT G.
[I J K] RAN RECORD BEARINGS & DISTANCES FROM POINT H PER M11-7, THEN ROTATED AROUND POINT H UNTIL LINE J-K INTERSECTED WITH RECORD DISTANCE FROM POINT L PER KINNEY'S IMPROVED PLAT.
[M] DISTANCE-DISTANCE INTERSECTION FROM POINTS K & N PER M11-7.
[O] EXTENDED THE BASIS OF BEARING LINE (WEST LINE SEC. 17) NORTHERLY THE RECORD DISTANCE PER INST. NO. 94-4721 & PARCEL 1 OF INST. NO. 92-17583 FROM POINT N (THERE APPEARS TO BE A DISCREPANCY BETWEEN M11-7 AND SAID DEEDS).
[P] HELD BEARING BETWEEN R & Q, RAN A PRORATED DISTANCE FROM POINT R USING THREE PINES SUBDIVISION.
[S] EXTENDED LINE U-T FROM POINT T, RECORD DISTANCE PER THREE PINES SUBDIVISION.
[V] DISTANCE-DISTANCE INTERSECTION FROM POINTS X & Z PER M126-40
[Y] TRAVERSED FROM POINT X PARALLEL WITH LINE V-Z THE RECORD DISTANCE PER CS 47/186.
[AA] DISTANCE-DISTANCE INTERSECTION FROM POINTS BB & CC PER CS 47/186.
[DD] DISTANCE-DISTANCE INTERSECTION FROM POINTS EE & FF PER M126-40.
[GG] FROM POINT EE TURNED RECORD ANGLE BACKSIGHTING POINT BB, RECORD DISTANCE PER CS 47/186
[HH] HELD 66° RIGHT-OF-WAY FROM POINT II AND USED WITH POINT GG TO ESTABLISH EAST RIGHT-OF-WAY OF RIFLE RANGE ROAD.
[JJ] FROM POINT KK TURNED RECORD ANGLE BACKSIGHTING POINT CC, INTERSECTING WITH LINE HH-GG PER CS 47-186
[LL] EXTENDED LINE EE-DD NORTHERLY THE RECORD DISTANCE PER M126-40.
[MM] EXTENDED LINE X-V WESTERLY THE RECORD DISTANCE PER NORTHLAWN TERRACE SUBDIVISION.
[NN] OFFSET LINE OO-MM 40 FEET NORTHERLY PER NORTHLAWN TERRACE SUBDIVISION AND INTERSECTED WITH THE WESTERLY EXTENSION OF LINE S-U.
[PP] INTERSECTED THE WEST RIGHT-OF-WAY OF RIFLE RANGE ROAD (PARALLEL WITH LINE HH-GG) FROM POINT II WITH THE NORTHERLY RIGHT-OF-WAY OF RIFLE RANGE ROAD (PARALLEL WITH LINE OO-MM) FROM POINT NN.
[QQ] EXTENDED LINE RR-SS EASTERLY THE RECORD DISTANCE PER M11-7

FIELD CREW: NIEL HIBBS & ROD McALLISTER
EQUIPMENT: NIKON TOP GUN TOTAL STATION
OFFICE: BEN JOHNSON
DRAFTING: TIM ADAMS

NOTE: A DISCREPANCY EXISTS BETWEEN THE DEED AND RECORD SURVEY DATA WITH REGARD TO THE DISTANCE FROM THE 1/4 CORNER COMMON TO SECTIONS 17 AND 18 TO THE NORTHWEST CORNER OF THE SUBJECT PROPERTY. I CALCULATED A POINT AT THE DEED DISTANCE AND HOLD THIS AS THE TRUE POSITION AS IT AGREES WITH THE DEEDS OF THE ADJOINING PROPERTY.

REGISTERED PROFESSIONAL LAND SURVEYOR
SURVEYED FOR: RIFLE RANGE ROAD CORP.
SURVEYED BY: i.e. ENGINEERING
SCALE: 1" = 200' DATE: JULY 1998 JOB NO. 1424-03 PAGE: 1 OF 1

COUNTY SURVEYORS FILE DATA
DO NOT REMOVE FROM OFFICE