

SURVEY NARRATIVE TO COMPLY WITH PARAGRAPH 209.250 OREGON REVISED STATUTES FILED

Date: 7/20/1998 By: JP  
This survey consists of:  
Map: M 129-8  
Narrative:  
Corner Pipt:

DOUGLAS COUNTY SURVEYOR

LEGEND

- OSDF P/C = OREGON STATE DEPARTMENT OF FORESTRY 1 1/2" X 36" ALUMINUM PIPE WITH 3 3/4" ALUMINUM CAP AND MAGNETIC INSERT
- OSBF P/C = OREGON STATE BOARD OF FORESTRY 1 1/2" X 36" GALVANIZED IRON PIPE WITH 3" BRONZE CAP
- BLM P/C = BUREAU OF LAND MANAGEMENT 2 1/2" X 30" IRON PIPE WITH BRASS CAP
- True Blazed and Posted
- Orange Carsonite Marker and Station, CBM-250 Labeled Boundary Marker
- Monument Found
- Monument Set
- Yellow Metal Location Poster
- 4" X 4" X 72" White Painted Cedar Post
- Bearing Tree Tag
- Diameter Breast Height
- Course
- Bearing Tree
- Orange Carsonite Marker CBM-250 Labeled Witness Post
- In Ground
- Iron Pipe
- New Corner Set
- Record Bearing and Distance in Chains
- W.H. BYARS, 1882, CONTRACT NO. 456

PURPOSE

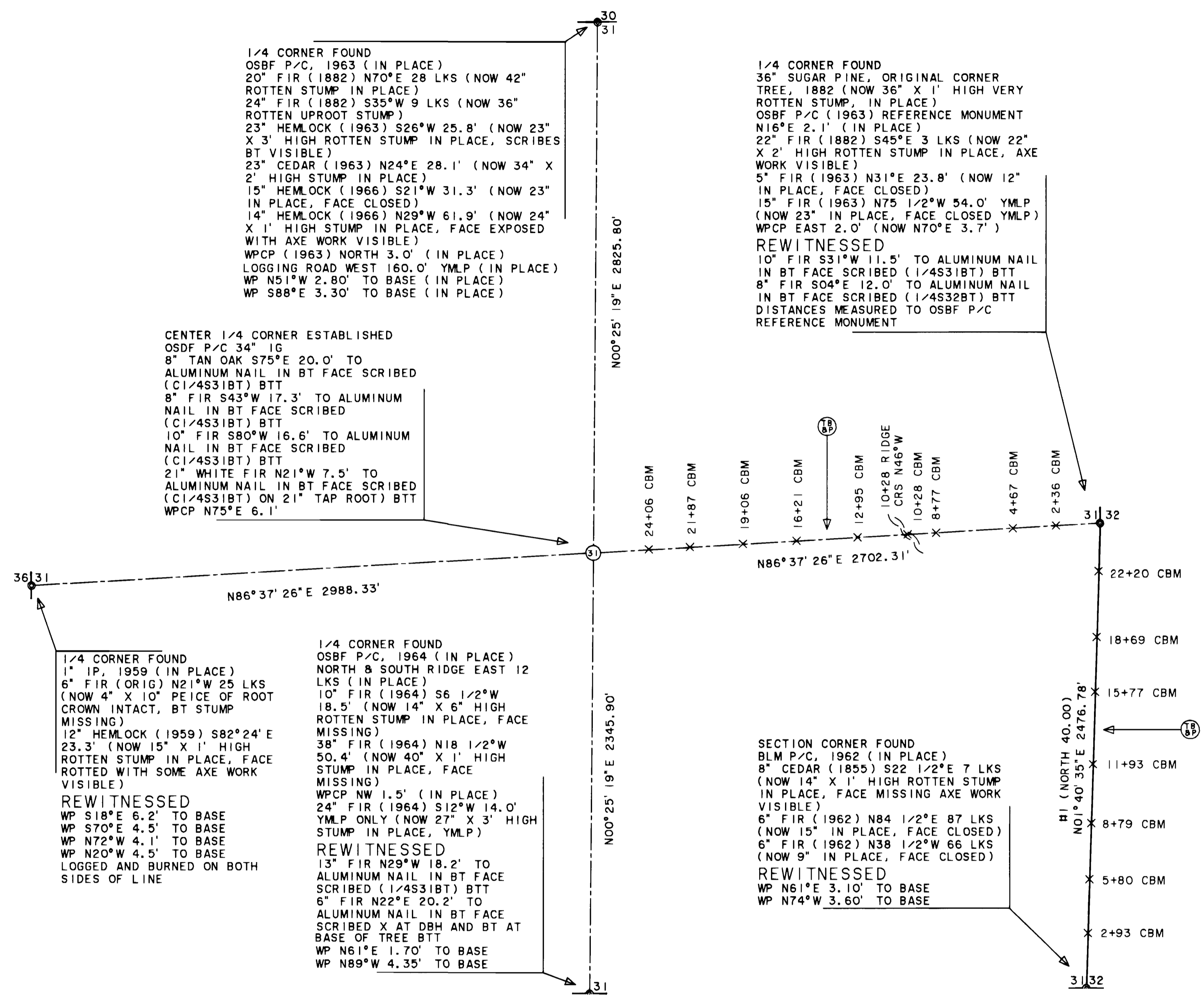
TO SEPARATE STATE FOREST LAND AND PRIVATE LANDS LOCATED IN SECTION 31, TOWNSHIP 31 SOUTH, RANGE 5 WEST, WILLAMETTE MERIDIAN.

PROCEDURE

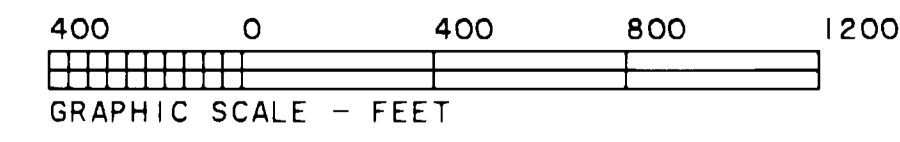
A RANDOM TRAVERSE, USING A WILD T1000 THEODOLITE AND A DI 1600 EDM, WAS USED TO CONNECT CONTROLLING CORNERS. THE SOUTH ONE QUARTER CORNER IS STAMPED COMMON TO BOTH SECTIONS 31 & 6 AND SHOULD BE STAMPED FOR SECTION 31 ONLY. BEARINGS AND DISTANCES WERE COMPUTED AND OFFSETS CALCULATED TO POINTS ON TRUE LINE FOR CARSONITE BOUNDARY MARKERS. ALL CORNER ACCESSORIES WERE MARKED AS OUTLINED IN THE "MANUAL OF INSTRUCTIONS FOR THE SURVEY OF PUBLIC LANDS OF THE U.S." 1973. BEARINGS TO ACCESSORIES WERE TAKEN WITH A HAND COMPASS SET AT 20° EAST MAGNETIC DECLINATION. DISTANCES WERE MEASURED TO AN ALUMINUM NAIL IN BEARING TREE FACE. FOR A DETAILED REPORT ON FOUND CORNERS SEE COUNTY RECORDS.

BASIS OF BEARING

SOLAR OBSERVATION - HOUR ANGLE METHOD



SURVEY FOR:  
STATE OF OREGON - DEPARTMENT OF FORESTRY  
SECTION 31, T. 31S., R. 5W., W. M.  
DOUGLAS COUNTY, OREGON  
THEODOLITE AND EDM SURVEY BY:  
L.D. SMITH AND T. VAN VLEET  
DRAWN BY: T. VAN VLEET  
JUNE 30, 1998  
SCALE 1" = 400'



SURVEY BY:  
REGISTERED PROFESSIONAL LAND SURVEYOR  
*Lloyd D. Smith*  
OREGON  
JULY 22, 1977  
LLOYD D. SMITH  
1101  
LLOYD D. SMITH  
300 5TH ST., BAY PARK  
COOS BAY, OREGON

EXPIRATION DATE OF CERTIFICATE 6-30-00

ODF PLAT NO. 421

COUNTY SURVEYORS FILE DATA  
DO NOT REMOVE FROM OFFICE