

COUNTY SURVEYORS FILE DATA  
DO NOT REMOVE FROM OFFICE

SCALE 1"=400'



FILED  
Date: 6-7-1999 By: JP  
This survey consists of:  
Map: M129-46  
Narrative:  
Corner Rpt:  
DOUGLAS COUNTY  
SURVEYOR JP

③ SECTION CORNER 11, 12, 13, 14  
1-1/4" IRON PIPE WITH DOUGLAS CO. BRASS CAP "1958"  
35" DOUBLE CEDAR, NORTH, 53' - M105-27  
RECORD: 33" DOUBLE CEDAR, NORTH, 53' - M105-27  
27" FIR, S69E, 167.7' - M105-27  
RECORD: 25" FIR, S69E, 167.7' - M105-27  
44" I. CEDAR, N49-1/4E, 94.1' - M105-27  
RECORD: 41" I. CEDAR, N49-1/4E, 94.1' - M105-27  
45" W. FIR, S 77-1/4W, 7.9' - M105-27  
RECORD: 44" W. FIR, S77-1/4E, 94.1' - M105-27

② 1/4 CORNER 12 & 13  
FND 1" ALUMINUM PIPE  
22" FIR, S44-3/4W, 39.1' - M105-27  
RECORD: 19" FIR, S44-3/4W, 39.3' - M105-27  
30" FIR SNAG, N82-1/4E, 26.3' - M105-27  
RECORD: 30" FIR SNAG, N82-1/4E, 26.3' - M105-27

① SECTION CORNER 7, 12, 13, 18  
FND 1958 DOUGLAS COUNTY BRASS CAP  
30" CEDAR, N75E, 8.1' - M105-27  
RECORD: 28" CEDAR, N75E, 8.1' - M105-27  
29" CEDAR, S49E, 5.2' - M105-27  
RECORD: 26" CEDAR, S49E, 5.2' - M105-27  
13" YEW, N38W, 16.9' - M105-27  
RECORD: 12" YEW, N38W, 16.9' - M105-27

④ NORTH 1/16 CORNER 13 & 14  
FND: BRASS CAP MARKED "PLS 752 1987"  
23" FIR, N4E, 9.3' - M105-27  
RECORD: 19" FIR, N4E, 9.3' - M105-27  
22" FIR, S77W, 44.6' - M105-27  
RECORD: 20" FIR, S77W, 44.6' - M105-27

⑤ NORTHWEST 1/16 CORNER  
SET: 5/8" x 30" REBAR WITH ALUMINUM CAP (MARKED AS SHOWN)  
8" FIR, EAST, 43.7' - M105-27  
SCRIBED: "NW 1/16 S13 BT"  
10" FIR, N28W, 24.9' - M105-27  
SCRIBED: "NW 1/16 S13 BT"

⑥ CENTER NORTH 1/16 CORNER  
FND: BRASS CAP MARKED "PLS 752 1987"  
24" FIR, N2W, 6.4' - M105-27  
RECORD: 22" FIR, N2W, 6.4' - M105-27  
24" FIR, S67-1/2W, 17.5' - M105-27  
RECORD: 19" FIR, S67-1/2W, 17.5' - M105-27

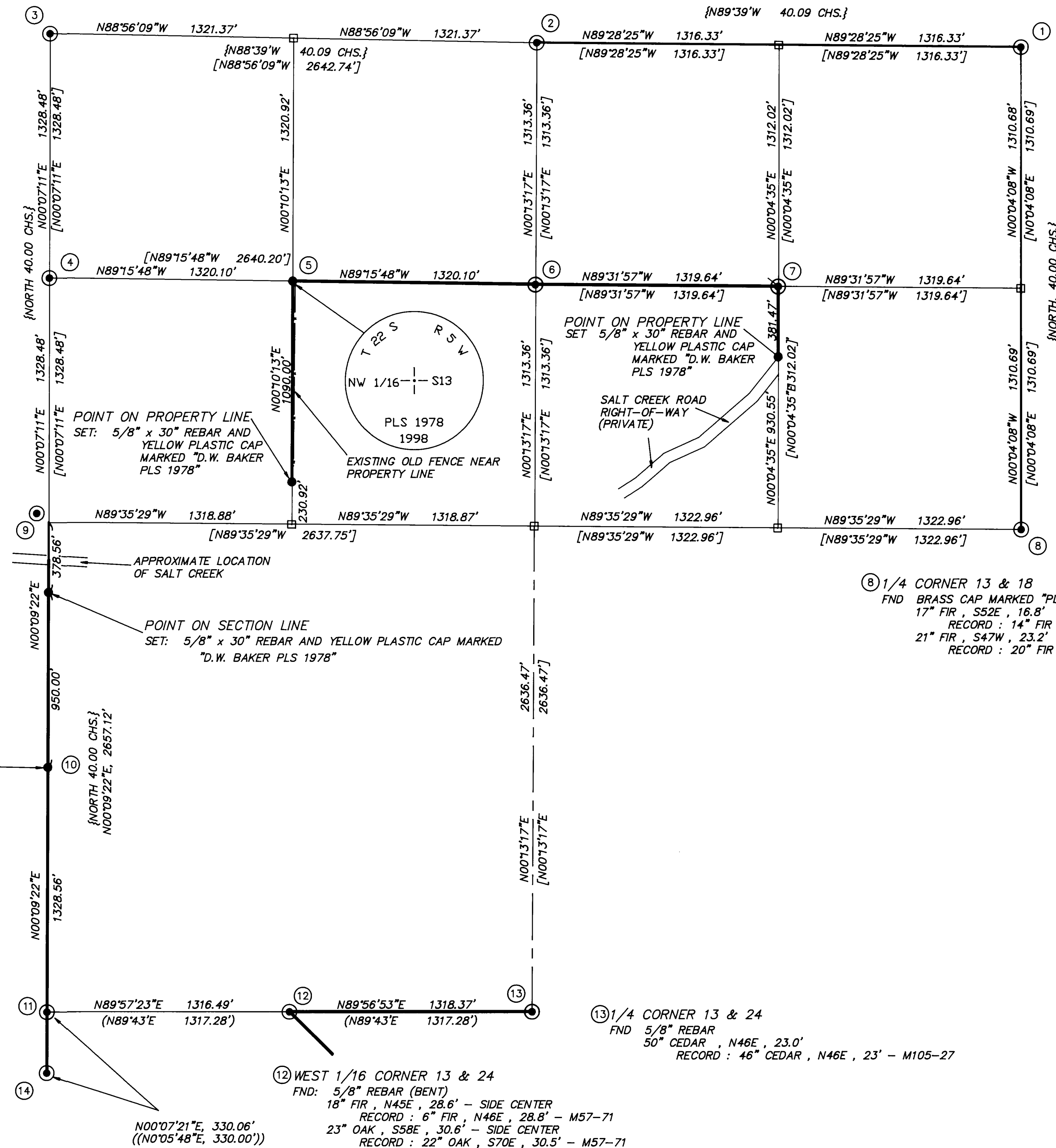
⑦ NORTHEAST 1/16 CORNER  
FND: BRASS CAP MARKED "PLS 752 1987"  
19" FIR, N40W, 29.7' - M105-27  
RECORD: 16" FIR, N40W, 29.7' - M105-27  
21" FIR, S7E, 82.7' - M105-27  
RECORD: 19" FIR, S7E, 82.7' - M105-27

⑨ 1/4 CORNER 13 & 14  
FND: IRON BOLT WITH 1" HEAD - STEEL FENCEPOST 1' SOUTH  
POWER POLE, S30-1/2E  
RECORD: POWER POLE, S30-1/2E - M105-27

⑩ SOUTH 1/16 CORNER  
SET: 5/8" x 30" REBAR WITH ALUMINUM CAP (MARKED AS SHOWN)  
9" FIR, S83W, 5.2' - SIDE CENTER  
8" OAK, N20E, 18.8' - SIDE CENTER

⑪ SECTION CORNER 13, 14, 23, 24  
FND BLM BRASS CAP "1973"  
17" FIR, N61-1/2E, 30.3' - M105-69  
RECORD: 14" FIR, N61-1/2E, 30.3' - M105-69  
18" FIR, S44E, 17.3' - M105-69  
RECORD: 17" FIR, S44E, 17.3' - M105-69  
21" FIR, S25-1/2W, 33.0' - M105-69  
RECORD: 19" FIR, S25-1/2W, 33.0' - M105-69  
21" FIR, N32-1/2W, 18.0' - M105-69  
RECORD: 18" FIR, N32-1/2W, 18.0' - M105-69

⑭ PROPERTY CORNER PER M105-69  
FND: 2" IRON PIPE WITH BRASS CAP MARKED "PLS 752"  
18" FIR, N70E, 66.6' - CLOSED FACE  
16" FIR, N33W, 25.6' - CLOSED FACE



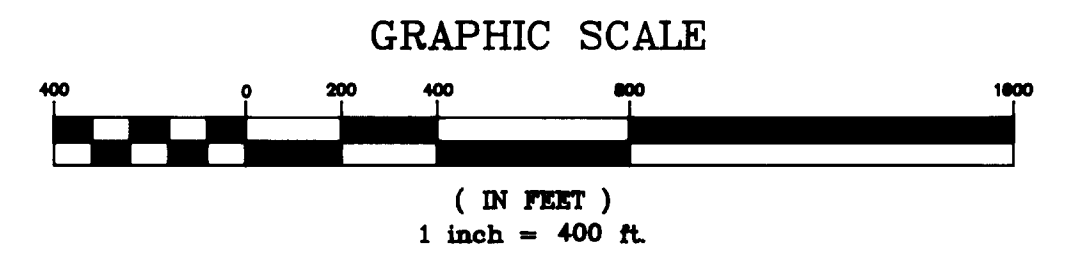
- NARRATIVE -

THIS SURVEY WAS MADE IN SEPTEMBER AND OCTOBER, 1997 AND JULY AND DECEMBER, 1998 AND JANUARY, 1999 BY DANIEL W. BAKER OF BAKER AND ASSOCIATES SURVEYORS, INC. THE PURPOSE OF THIS SURVEY WAS TO LOCATE AND MARK IN THE FIELD A PORTION OF THE PROPERTY LINES OF ROCKING C RANCH L.L.C., IN SECTION 13, T22S, R5W, W.M. A TOPCON 211D TOTAL STATION WAS USED TO PERFORM THIS SURVEY, WITH A MINIMUM ERROR OF CLOSURE OF 1" IN 8,000 FEET. THE FOLLOWING CORNERS, AS TIED IN M105-27, WERE USED FOR CONTROL. THE NORTHWEST SECTION CORNER, THE NORTH 1/4 CORNER, THE NORTHEAST SECTION CORNER, THE EAST 1/4 CORNER, THE WEST 1/4 CORNER, THE SOUTH 1/4 CORNER, THE SOUTHWEST SECTION CORNER, THE WEST 1/16 CORNER ON THE SOUTH LINE, THE NORTH 1/16 CORNER ON THE WEST LINE, THE CENTER-NORTH 1/16 CORNER, AND THE NORTHEAST 1/16 CORNER. THE INTERIOR MONUMENTS SET ON THE SECTION SUBDIVISION LINES WERE SET PER CONTROL PER M105-27, WHICH WAS A SURVEY PERFORMED BY THIS COMPANY IN 1987. THE NORTHWEST 1/16 CORNER WAS SET AT THE INTERSECTION OF THE NORTH-SOUTH AND EAST-WEST CENTERLINES OF THE NORTHWEST 1/4 OF SECTION 13. THE SOUTH 1/16 CORNER WAS SET AT MIDPOINT ON THE SOUTH 1/2 OF THE WEST LINE OF SECTION 13. THE MONUMENTS SET AT THESE CORNER LOCATIONS WERE MARKED PER "BLM MANUAL OF INSTRUCTIONS - 1973" AND ALSO MARKED "PLS 1978". ALL PROPERTY LINES WERE BLAZED AND PAINTED (BLAZES PAINTED RED) AND 6 FOOT STEEL FENCE POSTS WERE SET AT RANDOM INTERVALS ALONG THE TRUE PROPERTY LINES. THE TWO MONUMENTS CALLED "POINTS ON LINE", WERE SET ON THE SECTION SUBDIVISION LINES NEAR, BUT NOT ON, THE RIGHT-OF-WAY LINES OF THE ROAD. THESE POINTS WERE MONUMENTED WITH 5/8" x 30" REBARS WITH YELLOW PLASTIC CAPS MARKED "D.W. BAKER PLS 1978".

BASIS OF BEARING: NORTH 1/2 EAST LINE  
SECTION 13, AS PER M105-27

LEGEND

- ⊙ - CORNERS FOUND (AS NOTED)
- - CORNERS SET (AS NOTED)
- - CALCULATED POINT (NOT SET)
- - PROPERTY LINE
- { } - RECORD DATA - 1855 GLO
- [ ] - RECORD DATA - M105-27
- (( )) - RECORD DATA - M105-69
- ( ) - RECORD DATA - M57-71
- x- - EXISTING FENCE
- - DEED REFERENCE - VOLUME 323, PAGE 613 DOUGLAS COUNTY, OREGON OFFICIAL RECORDS



REGISTERED PROFESSIONAL LAND SURVEYOR  
*Daniel W. Baker*  
OREGON  
JULY 18, 1982  
DANIEL W. BAKER  
1978  
EXPIRES 12/31/99

<b>SURVEY IN</b> SW 1/4 AND N 1/8 OF SECTION 13, T22S, R5W, W.M. DOUGLAS COUNTY, OREGON	
CLIENT:	<b>ROCKING "C" RANCH</b>
DRAWN BY:	HAM
DATE:	2/10/99
FILE:	ROCKINGC
<b>BAKER AND ASSOCIATES, SURVEYORS</b> 1388 OAK STREET - SUITE 3 EUGENE, OREGON 97401 (541) 343-7243	