

COUNTY SURVEYORS FILE DATA
DO NOT REMOVE FROM OFFICE

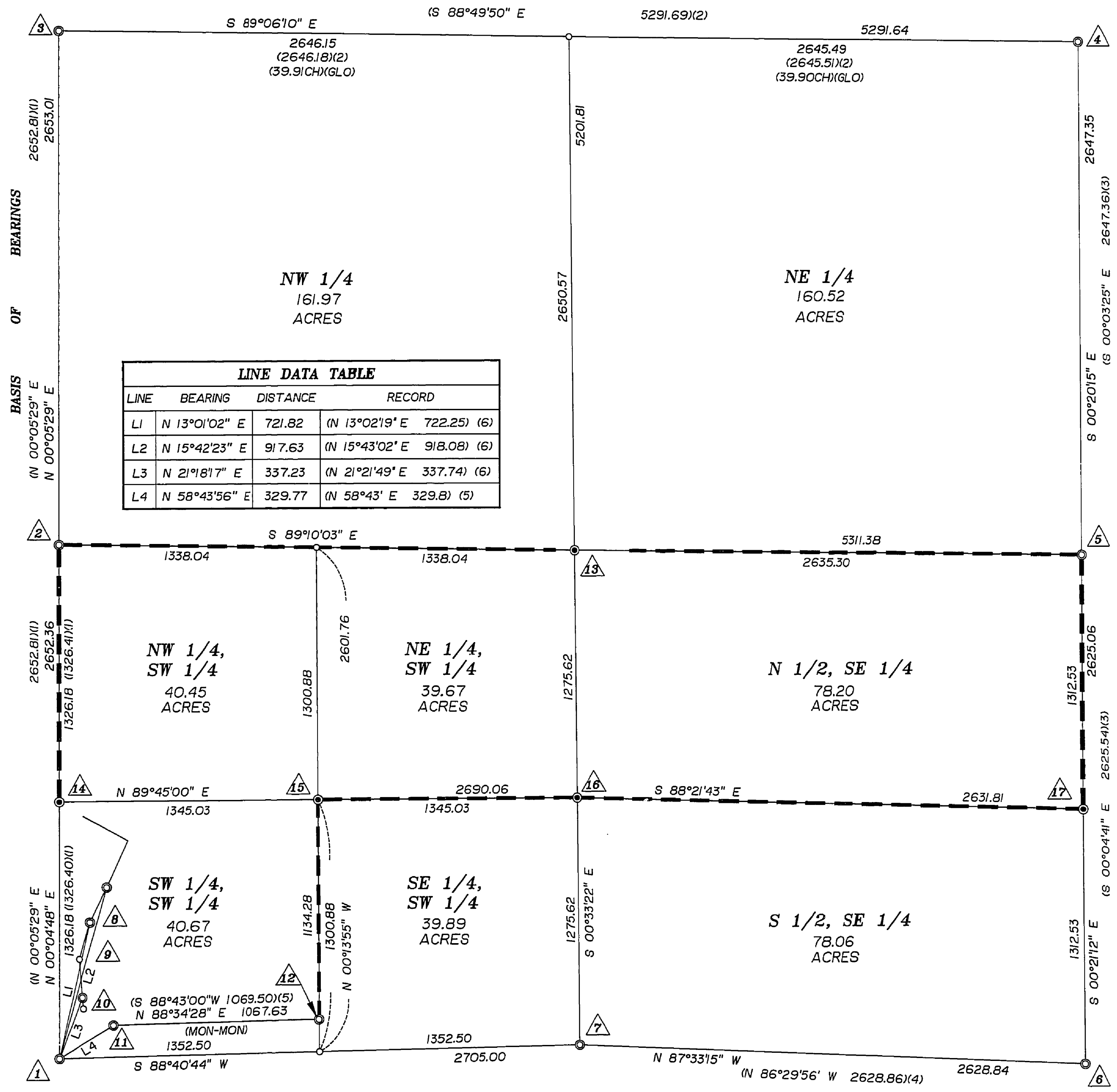
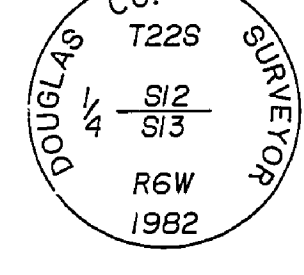
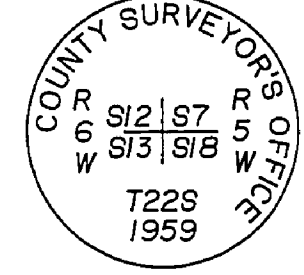
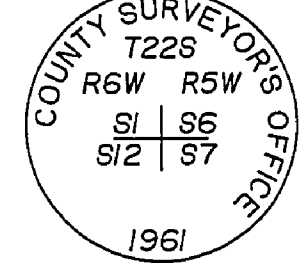
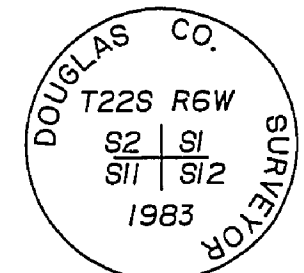
SURVEY FOR
W.E. McARTHUR & ASSOCIATES, INC.
SEC. 12, T.22S., R.6W., W.M.
DOUGLAS COUNTY, OREGON

FEBRUARY 22, 1999
SCALE 1"=400'

FILED
Date: 3-2-1999 By: JP
This survey consists of:
Map: M129-33
Narrative:
Corner Rpt:
DOUGLAS COUNTY SURVEYOR JP

CORNER DESCRIPTION

- 1 FOUND 2" IRON PIPE (NO CAP) AND REFERENCE OBJECTS PER DOUGLAS COUNTY SURVEYOR'S OFFICE CORNER RECORD No. 600500.
- 2 FOUND 5/8" IRON ROD WITH YELLOW PLASTIC CAP MARKED "BRANCH ENG. LS 1138" AND BEARING TREES PER DOUGLAS COUNTY SURVEYOR'S OFFICE CORNER RECORD No. 600540
- 3 FOUND 2 1/2" DOUGLAS COUNTY SURVEYOR'S OFFICE BRASS CAP AND BEARING TREES PER DOUGLAS COUNTY SURVEYOR'S OFFICE CORNER RECORD No. 600600 FENCES RUN NORTH-SOUTH-EAST AND WEST FROM CORNER.
- 4 FOUND 2 1/2" DOUGLAS COUNTY SURVEYOR'S OFFICE BRASS CAP AND BEARING TREES PER DOUGLAS COUNTY SURVEYOR'S OFFICE CORNER RECORD No. 700600. WIRE FENCE RUNS EAST AND SOUTH FROM CORNER.
- 5 FOUND 3/4" IRON PIPE (NO CAP) AND BEARING TREES DESCRIBED IN DOUGLAS COUNTY SURVEYOR'S OFFICE CORNER RECORD No. 700540. THE 32" FIR IS NOW A SHATTERED STUMP.
- 6 FOUND 2 1/2" DOUGLAS COUNTY SURVEYOR'S OFFICE BRASS CAP AND BEARING TREES PER DOUGLAS COUNTY SURVEYOR'S OFFICE CORNER RECORD No. 700500.
- 7 FOUND 2 1/2" DOUGLAS COUNTY SURVEYOR'S OFFICE BRASS CAP AND BEARING TREES PER DOUGLAS COUNTY SURVEYOR'S OFFICE CORNER RECORD No. 640500. FENCES RUN SOUTH AND WEST FROM CORNER.
- 8 FOUND 3/4" IRON ROD PER DOUGLAS COUNTY SURVEYOR'S OFFICE MAP FILE No. M 10-38.
- 9 FOUND 3/4" IRON ROD PER DOUGLAS COUNTY SURVEYOR'S OFFICE MAP FILE No. M 10-38.
- 10 FOUND 3/4" IRON ROD PER DOUGLAS COUNTY SURVEYOR'S OFFICE MAP FILE No. M 10-38.
- 11 FOUND 5/8" IRON ROD PER DOUGLAS COUNTY SURVEYOR'S OFFICE MAP FILE No. M 62-50.
- 12 FOUND 5/8" IRON ROD PER DOUGLAS COUNTY SURVEYOR'S OFFICE MAP FILE No. M 62-50 SOUTH 88°34'28" WEST 2.29 FEET FROM THE WEST LINE OF THE SOUTHEAST QUARTER, SOUTHWEST QUARTER OF SECTION 12.
- 13 SET 5/8" x 30" REBAR WITH YELLOW PLASTIC CAP MARKED "BRANCH ENGINEERING", 0.4 FOOT BELOW THE GROUND SURFACE IN GRAVEL DRIVEWAY.
FROM WHICH:
A FOUND 5/8" IRON ROD LYING 4 FEET SOUTH OF A FENCE CORNER BEARS N 88°05'26" W 103.58
A 5/8" IRON ROD WITH RED PLASTIC CAP MARKED "REF. MON. BRANCH ENG." LYING 23' FEET EAST OF A 12" PINE TREE. BEARS N 19°35'25" E 57.01 FEET.
A 5/8" IRON ROD WITH RED PLASTIC CAP MARKED "REF. MON. BRANCH ENG." LYING 2' FEET SOUTHWEST OF THE CORNER OF A CYCLONE FENCE. BEARS N 74°10'59" E 14.88.
A 5/8" IRON ROD WITH RED PLASTIC CAP MARKED "REF. MON. BRANCH ENG." LYING 5' FEET WEST OF THE SE CORNER OF A WELL HOUSE. BEARS S 11°03'44" W 18.11.
• NO BEARING TREES AVAILABLE EXCEPT ORNAMENTAL PLANTINGS.
- 14 SET 5/8" x 30" REBAR WITH YELLOW PLASTIC CAP MARKED "BRANCH ENGINEERING", IN 0.5 FOOT x 1.5 FOOT MOUND OF STONE ON STEEP SOUTH SLOPE NORTH OF HARDCRABBLE CREEK RD.
FROM WHICH:
A 5/8" IRON ROD WITH RED PLASTIC CAP MARKED "REF. MON. BRANCH ENG." BEARS N 14°31'18" E 5.85 FEET.
A 5/8" IRON ROD WITH RED PLASTIC CAP MARKED "REF. MON. BRANCH ENG." BEARS N 71°51'20" W 7.69 FEET.
• NO BEARING TREES WITHIN 200 FEET.

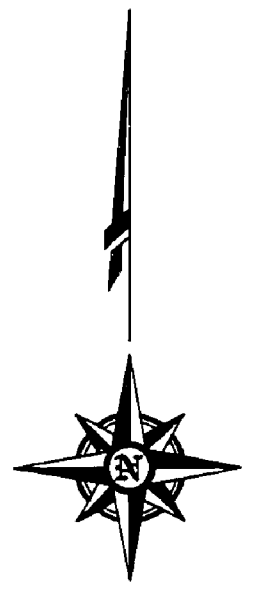


REFERENCES

- 1. MAP FILE No. M109-74 BY BRANCH ENGINEERING DATED MARCH 28, 1990.
- 2. MAP FILE No. M88-65 BY ROBERT DEAN DATED AUGUST 28, 1981.
- 3. MAP FILE No. M123-34 BY HARVEY CHRISTENSEN DATED JANUARY 10, 1995.
- 4. MAP FILE No. M55-5 BY FRANCIS INGRAM DATED DECEMBER 1974.
- 5. MAP FILE No. M62-50 BY WILFORD HAINES DATED NOVEMBER 17, 1976.
- 6. MAP FILE No. M10-38 BY ARTHUR EVANS DATED AUGUST 23, 1949.

LEGEND

- LINE TRAVERSED FOR POSTING
 - FOUND MONUMENT AS NOTED.
 - SET 5/8" x 30" REBAR WITH YELLOW PLASTIC CAP MARKED "BRANCH ENGINEERING".
 - CALCULATED POINT - NOTHING FOUND NOR SET.
 - () DENOTES DATA OF RECORD.
- ALL DISTANCES SHOWN ARE IN FEET.



NARRATIVE

THE PURPOSE OF THIS SURVEY WAS TO SUBDIVIDE SECTION 12, TOWNSHIP 22 SOUTH, RANGE 6 WEST OF THE WILLAMETTE MERIDIAN AND TRAVERSE CERTAIN OF THE SUBDIVISION LINES FOR POSTING AS PROPERTY LINES.

OF THE EIGHT CONTROLLING CORNERS OF SECTION 12, SEVEN EXIST. FIVE CORNERS ARE TRACEABLE TO ORIGINAL EVIDENCE, ONE IS PROBABLY FROM ORIGINAL EVIDENCE, ONE IS A PROPORTIONED CORNER AND ONE HAS BEEN LOST ACCORDING TO SURVEY RECORDS.

A FIELD SURVEY INCORPORATING BOTH TRAVERSE AND GPS METHODS WAS EXECUTED TYING ALL EXISTING CORNERS AND ESTABLISHING A SEARCH POINT IN THE AREA OF THE LOST NORTH ONE-QUARTER CORNER. POSITIONS WERE CALCULATED FOR ALL EXISTING CORNERS. THE FOUND MONUMENT AT THE WEST ONE-QUARTER CORNER, ALTHOUGH NOT FOUND AT THE TRUE MIDPOINT BETWEEN SECTION CORNERS, WAS ACCEPTED AS HAVING BEEN ESTABLISHED BY PROPER METHODS AND TO WITHIN ACCEPTABLE SURVEY TOLERANCES. NO EVIDENCE WAS FOUND OF THE NORTH ONE-QUARTER CORNER AND A PROPORTIONED POSITION WAS ESTABLISHED.

THE SECTION WAS THEN SUBDIVIDED PER THE BUREAU OF LAND MANAGEMENT'S MANUAL FOR THE SURVEY OF PUBLIC LANDS AND CERTAIN CORNERS WERE MONUMENTED AS SHOWN HEREON.

RECORD LINES AS SURVEYED BY ARTHUR EVANS IN DOUGLAS COUNTY SURVEYOR'S OFFICE MAP FILE No. M 10-38 AND BY WILFORD HAINES IN DOUGLAS COUNTY SURVEYOR'S OFFICE MAP FILE No. M 62-50 ARE SHOWN AS LOCATED BY MONUMENTS TIED IN THE COURSE OF THIS SURVEY. THESE LINES DO NOT REPRESENT A TRUE RETRACEMENT OF THESE SURVEYS AS NO ATTEMPT WAS MADE TO LOCATE ALL OF THE MONUMENTS OR OTHER EVIDENCE NOR WAS ANY ATTEMPT MADE TO RESOLVE DISCREPANCIES NOTED.

THE LINES WERE POSTED BY OUR CLIENT FROM INFORMATION PROVIDED BY US FROM OUR SURVEY.

REGISTERED PROFESSIONAL LAND SURVEYOR
James A. Branch
OREGON 827.23.1977
JAMES A. BRANCH
138
EXPIRES DEC. 31, 1999

- 15 SET 5/8" x 30" REBAR WITH YELLOW PLASTIC CAP MARKED "BRANCH ENGINEERING", IN 0.5 FOOT x 1.5 FOOT MOUND OF STONE ON CREST OF RIDGE SOUTHERLY OF HARDCRABBLE CREEK RD.
FROM WHICH:
A 16" FIR MARKED SW 1/16 S12 BT' WITH NAIL AND BRASS DISK 'BE' IN LOWER FACE BEARS S 73° E 2.8 FEET.
A 8" WHITE FIR MARKED SW 1/16 S12 BT' WITH NAIL AND BRASS DISK 'BE' IN LOWER FACE BEARS S 57° W 35.4 FEET.
- 16 SET 5/8" x 30" REBAR WITH YELLOW PLASTIC CAP MARKED "BRANCH ENGINEERING", IN 0.5 FOOT x 1.0 FOOT MOUND OF STONE AT BASE OF SOUTH SLOPE 150 FEET +/- NORTH OF MLL POND
FROM WHICH:
AN 8" OAK MARKED 'CS 1/16 BT' WITH NAIL AND BRASS DISK 'BE' IN LOWER FACE BEARS S 45° E 29.6 FEET.
A 26" DOUGLAS FIR MARKED 'CS 1/16 BT' WITH NAIL AND BRASS DISK 'BE' IN LOWER FACE BEARS N 34° W 32.1 FEET.
- 17 SET 5/8" x 30" REBAR WITH YELLOW PLASTIC CAP MARKED "BRANCH ENGINEERING", IN 2.3 FOOT x 2.0 FOOT MOUND OF STONE 25 FEET WEST OF CREEK
FROM WHICH:
A 14" MAPLE MARKED 'S 1/16 S12 BT' WITH NAIL AND BRASS DISK 'BE' IN LOWER FACE BEARS S 35° W 8.9 FEET.
A 16" FIR MARKED 'S 1/16 S7 BT' WITH NAIL AND BRASS DISK 'BE' IN LOWER FACE BEARS N 46° E 21.4 FEET.

Branch Engineering, Inc.
310 Fifth Street
Springfield, Oregon 97477
(541)746-0637 FAX (541)746-0389