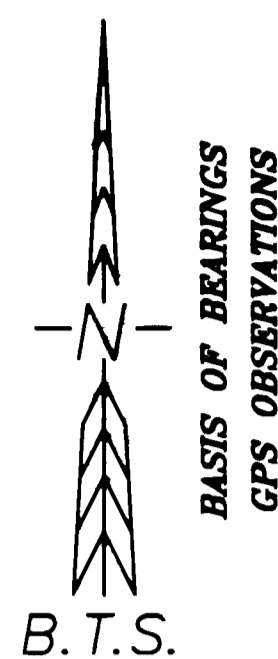


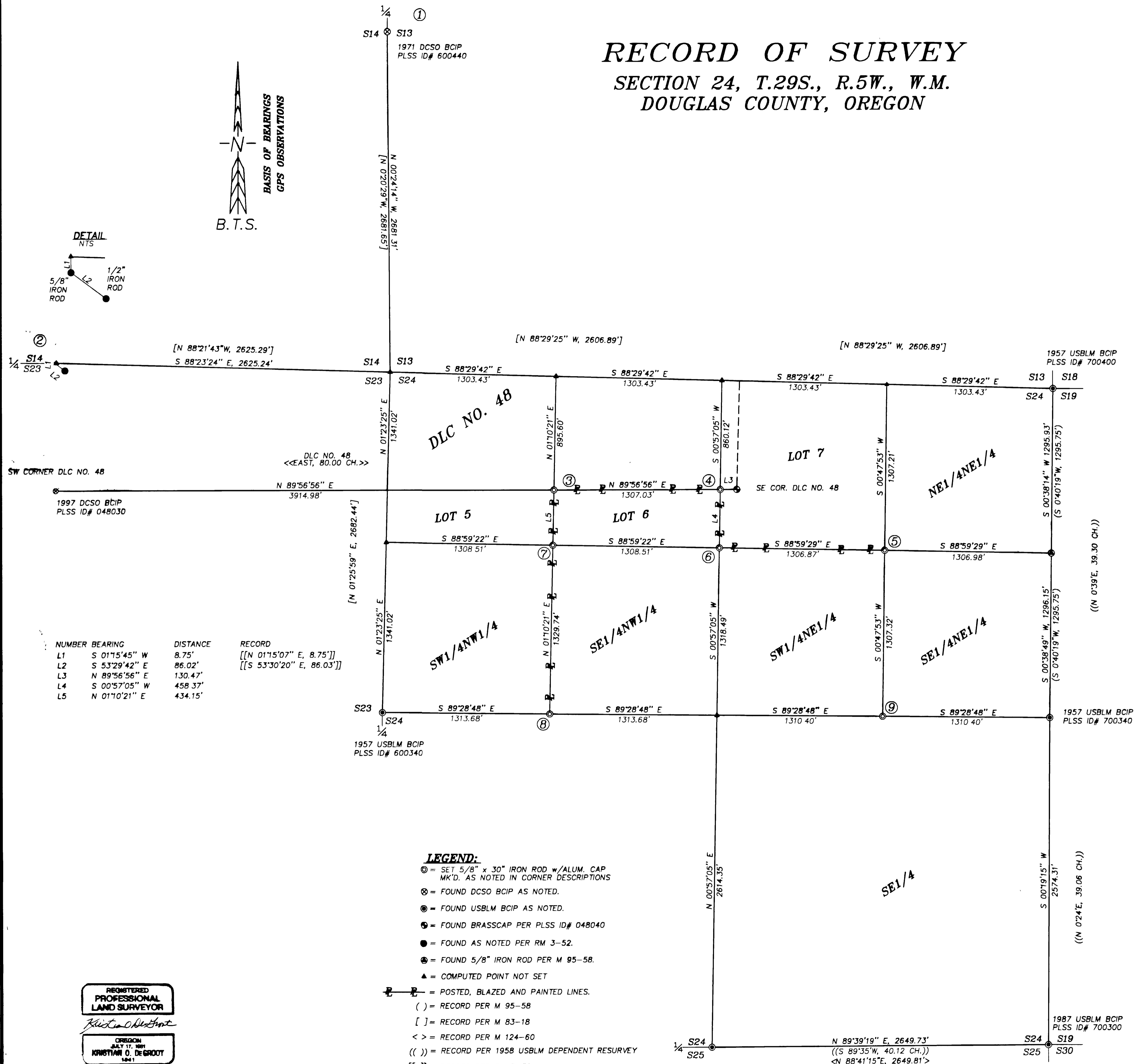
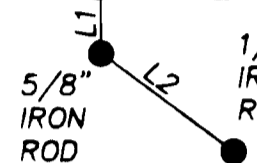
RECORD OF SURVEY

SECTION 24, T.29S., R.5W., W.M.

DOUGLAS COUNTY, OREGON



DETAIL NTS



NUMBER	BEARING	DISTANCE	RECORD
L1	S 01°15'45" W	8.75'	[[N 01°15'07" E, 8.75']]
L2	S 53°29'42" E	86.02'	[[S 53°30'20" E, 86.03']]
L3	N 89°56'56" E	130.47'	
L4	S 00°57'05" W	458.37'	
L5	N 01°10'21" E	434.15'	

- LEGEND:**
- ⊙ = SET 5/8" x 30" IRON ROD w/ALUM. CAP MK'D. AS NOTED IN CORNER DESCRIPTIONS
 - ⊗ = FOUND DCSO BCIP AS NOTED.
 - ⊙ = FOUND USBLM BCIP AS NOTED.
 - ⊙ = FOUND BRASSCAP PER PLSS ID# 048040
 - ⊙ = FOUND AS NOTED PER RM 3-52.
 - ⊙ = FOUND 5/8" IRON ROD PER M 95-58.
 - ▲ = COMPUTED POINT NOT SET
 - |—|— = POSTED, BLAZED AND PAINTED LINES.
 - () = RECORD PER M 95-58
 - [] = RECORD PER M 83-18
 - < > = RECORD PER M 124-60
 - (()) = RECORD PER 1958 USBLM DEPENDENT RESURVEY
 - [[]] = RECORD PER RM 3-52
 - << >> = USGLO RECORD PER 1855 DLC NO. 48

NARRATIVE:

THE PURPOSE OF THIS SURVEY WAS TO SUBDIVIDE SECTION 24, MONUMENT THE CE 1/16, NE 1/16, CN 1/16, NW 1/16, CW 1/16, NE CORNER OF LOT 6 AND THE NW CORNER LOT 6, AND TO POST, BLAZE AND PAINT BOUNDARY LINES FOR LOGGING. GPS CONTROL POINTS WERE SURVEYED AND THEN CLOSED LOOP RANDOM LINE TRAVERSES WERE SURVEYED TO ALL CONTROLLING CORNERS. THE EAST, WEST AND SOUTH 1/4 CORNERS OF SECTION 24 WERE FOUND AS PERPETUATED IN ORIGINAL POSITION IN A 1957 USBLM DEPENDENT RESURVEY. THE EAST 1/4 CORNER OF SECTION 14 WAS FOUND AS PERPETUATED IN ORIGINAL POSITION BY THE DOUGLAS COUNTY SURVEYORS OFFICE IN 1971. THE NORTHEAST AND SOUTHEAST CORNERS OF SECTION 24 WERE SET AT PROPORTIONATE DISTANCE UNDER THE 1957 USBLM DEPENDENT RESURVEY WITH THE SOUTHEAST CORNER OF SECTION 24 BEING REMONUMENTED IN THE 1957 POSITION UNDER A 1987 USBLM DEPENDENT RESURVEY. THE SOUTH 1/4 CORNER OF SECTION 14 WAS ESTABLISHED AT PROPORTIONATE DISTANCE UNDER RM 3-52. THE CORNER POSITION WAS COMPUTED AT RECORD RM 3-52 ANGLE AND DISTANCE FROM RM 3-52 MONUMENTS FOUND. THE SW CORNER OF DLC NO. 48 WAS FOUND AS PERPETUATED IN ORIGINAL POSITION BY THE DOUGLAS COUNTY SURVEYORS OFFICE IN 1997. THE SOUTHEAST CORNER OF DLC NO. 48 WAS FOUND AS TIED UNDER M 89-31 IN 1981 AND UNDER M 122-61 IN 1995. THE NORTH 1/16 CORNER OF SECTIONS 19 AND 24 WAS FOUND PER M 95-58. USING THESE CORNER POSITIONS, SECTION 24 WAS SUBDIVIDED AS PER THE MANUAL OF SURVEYING INSTRUCTION, 1973 AND THE LAWS OF THE STATE OF OREGON.

THIS SURVEY WAS PERFORMED BY KRIS DEGROOT, DEREK MILLER, MATT DIXON AND ADAM DEGROOT USING LEICA SR299 GPS RECEIVERS AND A SOKKIA SET 5A TOTAL STATION WITH COMPUTATIONS BY KRIS DEGROOT AND DRAFTING BY BILL WARREN.

CORNER DESCRIPTIONS:

- ALL NEW BEARING TREES HAVE A 6" RED BAND PAINTED AROUND THE TREE, A DOUBLE BLAZED FACE PAINTED RED WITH A BRASS WASHER STAMPED "PLS 1941" NAILED INTO THE LOWER BLAZE AND A BEARING TREE TAG ATTACHED. BEARINGS ARE TAKEN TO THE CENTER OF THE TREE AT THE ROOT CROWN AND DISTANCES ARE MEASURED TO A NAIL IN THE ROOT CROWN AT THE SIDE AND CENTER OF THE TREE
- 1/4 S14/S13---FOUND 1971 DCSO 1 1/4" IRON PIPE WITH 2 1/2" BRASS CAP PER PLSS ID#000440 BENT OVER AT GROUND LEVEL BY LOGGING OPERATIONS. 1 REFERENCED, REMOVED, STRAIGHTENED AND RESET BCIP IN ITS ORIGINAL POSITION.
 - 1/4 S14/S23---CORNER POSITION COMPUTED BY HOLDING RECORD RM 3-52 ANGLE AND DISTANCE FROM RM 3-52 FOUND MONUMENTS.
 - NW CORNER LOT 6, SECTION 24---SET A 5/8"x30" IRON ROD 28" IN THE GROUND WITH A 2" ALUMINUM CAP STAMPED:
T29S R5W
DLC 48
LOT 6
S24
1998
PLS 1941
FROM WHICH NEW BEARING TREES:
A 23" D.FIR BEARS N.27°W, 22.2 FT., SCRIBED "NW LOTS 6 BT".
A 25" D.FIR BEARS S.25°W, 16.3 FT., SCRIBED "NW LOTS 6 BT"
 - NE CORNER LOT 6, SECTION 24---SET A 5/8"x30" IRON ROD 28" IN THE GROUND WITH A 2" ALUMINUM CAP STAMPED:
T29S R5W
DLC 48
LOT 6
S24
1998
PLS 1941
FROM WHICH NEW BEARING TREES:
A 21" D.FIR BEARS S.16°E, 6.6 FT., SCRIBED "NE LOT 6 BT".
A 18" D. FIR BEARS S.13°W, 24.5 FT., SCRIBED "NE LOT 6 BT".
 - NE 1/16 SECTION 24--- SET A 5/8"x30" IRON ROD 28" IN THE GROUND WITH A 2" ALUMINUM CAP STAMPED:
T29S R5W
NE 1/16
S24
1998
PLS 1941
FROM WHICH NEW BEARING TREES:
A 13" D.FIR BEARS N.79°E, 31.7 FT., SCRIBED "NE 1/16 S24 BT".
A 10" D.FIR BEARS S.58°E, 20.7 FT., SCRIBED "NE 1/16 S24 BT".
 - CN 1/16 SECTION 24---SET A 5/8"x30" IRON ROD 28" IN THE GROUND WITH A 2" ALUMINUM CAP STAMPED:
T29S R5W
CN 1/16
S24
1998
PLS 1941
FROM WHICH NEW BEARING TREES:
A 10" D.FIR BEARS S.41°W, 55.4 FT., SCRIBED "CN 1/16 S24 BT".
A 13" D.FIR BEARS S.70°E, 22.0 FT., SCRIBED "CN 1/16 S24 BT".
 - NW 1/16 SECTION 24---SET A 5/8"x30" IRON ROD 28" IN THE GROUND WITH A 2" ALUMINUM CAP STAMPED:
T29S R5W
NW 1/16
S24
1998
PLS 1941
FROM WHICH NEW BEARING TREES:
A 13" D.FIR BEARS N.89°E, 22.8 FT., SCRIBED "NW 1/16 S24 BT".
A 17" D.FIR BEARS N.6°E, 31.4 FT., SCRIBED "NW 1/16 S24 BT".
 - CW 1/16 SECTION 24---SET A 5/8"x30" IRON ROD 27" IN THE GROUND WITH A 2" ALUMINUM CAP STAMPED:
T29S R5W
CW 1/16
S24
1998
PLS 1941
FROM WHICH NEW BEARING TREES:
A 13" D.FIR BEARS S.16°W, 74.3 FT., SCRIBED "CW 1/16 S24 BT".
A 12" W OAK BEARS S.87°W, 53.5 FT., SCRIBED "CW 1/16 S24 BT".
 - CE 1/16 SECTION 24---SET A 5/8"x30" IRON ROD 28" IN THE GROUND WITH A 2" ALUMINUM CAP STAMPED:
T29S R5W
E 1/16
S24
1998
PLS 1941
FROM WHICH NEW BEARING TREES:
A 11" D.FIR BEARS S.65°E, 14.7 FT., SCRIBED "CE 1/16 S24 BT".
A 9" D.FIR BEARS N.79°E, 28.5 FT., SCRIBED "CE 1/16 S24 BT"

REGISTERED PROFESSIONAL LAND SURVEYOR
Kris DeGroot
OREGON JULY 17, 1981
KRISTIAN D. DEGROOT
1941

RENEWAL: 12-31-99

BTS ENGINEERING & SURVEYING, INC.
431 S.E. MAIN ST., ROSEBURG, OR 97470
PHONE (541) 673-0966 FAX (541) 673-0105

SCALE: 1" = 400'
DATE: AUGUST 1998

FOR: BILL VAN CLEAVE
2965 S. MYRTLE ROAD
MYRTLE CREEK, OREGON 97457

JOB #: 98-059
FILE: VANCLEAV.DWG
SHEET 1 OF 1