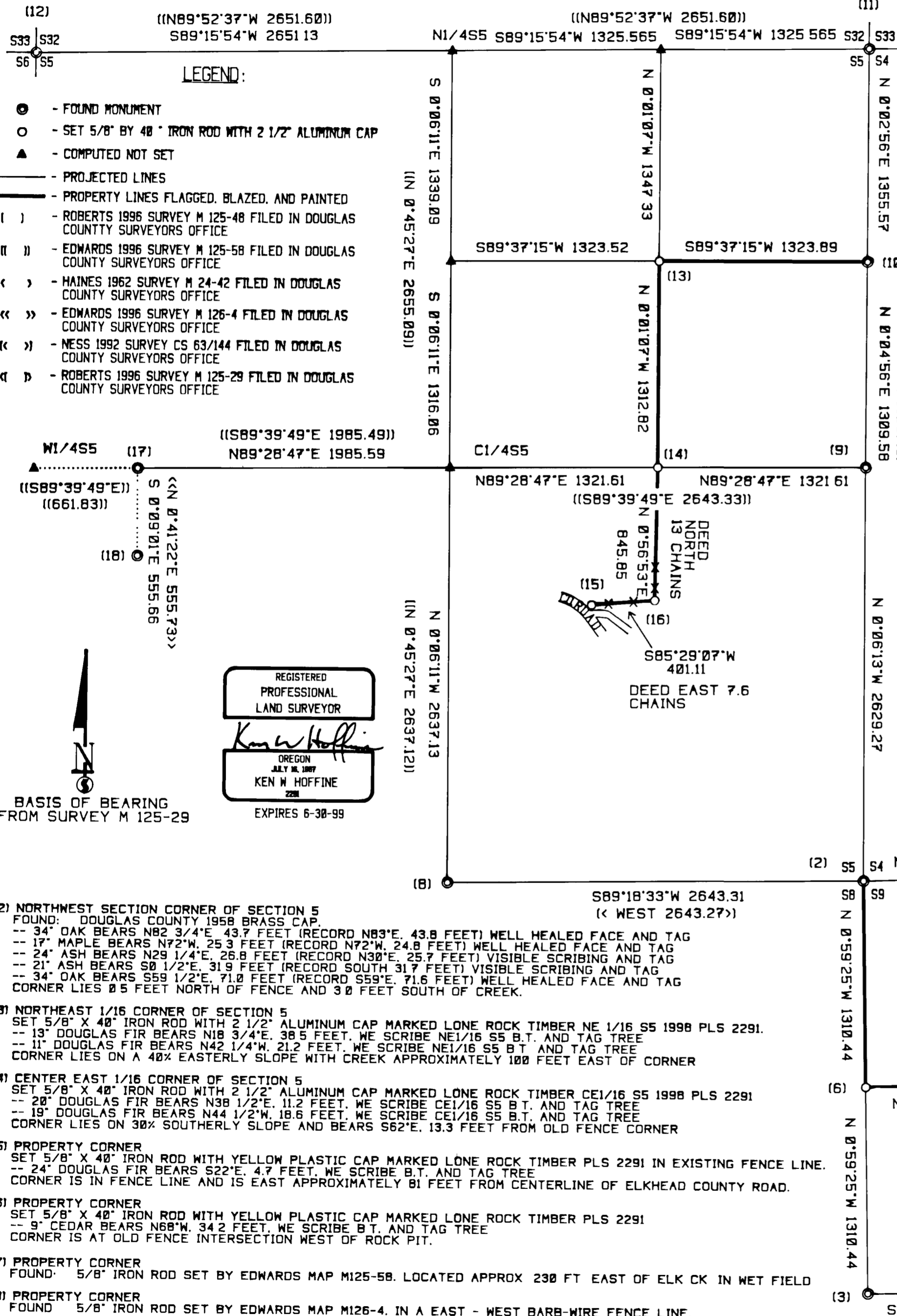


LONE ROCK TIMBER CO.

PO BOX 1127 ROSEBURG OREGON 97470 DATE: APRIL 1998
SECTIONS 5 & 9, TOWNSHIP 23 SOUTH, RANGE 4 WEST, W.M. DOUGLAS COUNTY, OREGON

LONE ROCK TIMBER TRACT: J - 23 - 4 - 5. & 9 SCALE 1" = 600'



CORNER INFORMATION

THE FOLLOWING IS A RECORD OF ALL CORNERS FOUND OR SET DURING THE COURSE OF THIS SURVEY

- 1) NORTH 1/4 CORNER OF SECTION 9**
FOUND: 1 1/2" IRON PIPE WITH HAINES T-IRON INSIDE PIPE
-- 21" DOUGLAS FIR BEARS S60 3/4"W, 13.3 FEET (RECORD S60"W, 13.3 FEET) WELL HEALED HIGH SCAR, BLM TAG
-- 24" DOUGLAS FIR BEARS N3 3/4"W, 19.7 FEET (RECORD N3"W, 19.8 FEET) WELL HEALED HIGH SCAR, BLM TAG
-- A BLM ADMINISTRATIVE SURVEY 1 1/4" IRON PIPE BEARS S30 1/4"E, 36.8 FEET
CORNER LIES ON FLAT GROUND WITH CLEARCUT TO THE SOUTH AND NORTHEAST
- 2) NORTHWEST SECTION CORNER OF SECTION 9**
FOUND: 1958 DOUGLAS COUNTY BRASS CAP
-- 28" OAK BEARS S19 3/4"E, 89.5 FEET (RECORD S20"E, 89.4 FEET) FAINT FACE AND BLM TAG
-- 25" OAK BEARS S33 1/2"W, 53.5 FEET (RECORD S32"W, 53.4 FEET) NO FACE, UNREADABLE B.T. TAG
-- 28" OAK BEARS N49 1/2"E, 38.0 FEET (RECORD N50"E, 38.4 FEET) NO TAG, NO FACE
-- 14" OAK BEARS N13"W, 68.9 FEET (RECORD N13"E, 69.4 FEET) WELL HEALED FACE AND BLM TAG
CORNER LIES APPROXIMATELY 150 FEET SOUTH AND EAST OF ELKHEAD COUNTY ROAD
- 3) 1/4 CORNER BETWEEN SECTIONS 8 AND 9**
FOUND: 1958 DOUGLAS COUNTY BRASS CAP
-- 38" DOUGLAS FIR STUMP N22 1/2"E, 40.4 FEET, NO FACE OR TAG
-- 22" DOUGLAS FIR BEARS N46 1/4"W, 18.5 FEET, WELL HEALED FACE AND BLM TAG
CORNER LIES 10 FEET EAST OF FENCE CORNER AND 4.0 FEET WEST OF SMALL CREEK.
- 4) CENTER 1/4 CORNER OF SECTION 9**
FOUND: 1987 DOUGLAS COUNTY BRASS CAP
-- 24" CEDAR BEARS S84 3/4"E, 23.3 FEET, (RECORD S83 1/2", 23.0 FEET) WELL HEALED FACE AND BLM TAG
-- 12" DOUGLAS FIR BEARS N3 3/4"E, 9.8 FEET, (RECORD N 5' E 9.8 FEET) WELL HEALED FACE AND BLM TAG
CORNER IS 1.0 FEET SOUTH OF FENCE CORNER
- 5) WEST 1/16 CORNER BETWEEN SECTIONS 4 AND 9**
SET 5/8" X 40" IRON ROD WITH 2 1/2" ALUMINUM CAP MARKED LONE ROCK TIMBER NW 1/16 S4; S9 1998 PLS 2291.
-- 13" DOUGLAS FIR BEARS N18 3/4"E, 38.5 FEET, WE SCRIBE NW 1/16 S4 B.T. AND TAG TREE
-- 11" DOUGLAS FIR BEARS N42 1/4"W, 21.2 FEET, WE SCRIBE W 1/16 S9 B.T. AND TAG TREE
-- 3/4" IRON PIPE BEARS S77°40'00"E, 21.85 FEET
CORNER LIES ON WEST FACING SLOPE APPROXIMATELY 150 FEET WEST OF DIRT ROAD AND RIDGE TOP.
- 6) NORTH 1/16 CORNER BETWEEN SECTIONS 8 AND 9**
SET 5/8" X 40" IRON ROD WITH 2 1/2" ALUMINUM CAP MARKED LONE ROCK TIMBER N 1/16 S8; S9 1998 PLS 2291.
-- 16" DOUGLAS FIR BEARS N8 1/4"W, 29.6 FEET, WE SCRIBE N 1/16 S8 B.T. AND TAG TREE
-- 20" DOUGLAS FIR BEARS N75 1/4"E, 13.1 FEET, WE SCRIBE N 1/16 S9, B.T. AND TAG TREE
CORNER IS 2 FEET NORTHEAST OF FENCE CORNER.
- 7) NORTHWEST 1/16 CORNER OF SECTION 9**
SET 5/8" X 40" IRON ROD WITH 2 1/2" ALUMINUM CAP MARKED LONE ROCK TIMBER NW 1/16 S9 1998 PLS 2291.
-- 17" DOUGLAS FIR BEARS S40 1/2"E, 15.2 FEET, WE SCRIBE NW 1/16 S9 B.T. AND TAG TREE
-- 27" DOUGLAS FIR BEARS N60 3/4"E, 18.5 FEET, WE SCRIBE NW 1/16 S9 B.T. AND TAG TREE
CORNER LIES ON SOUTH SLOPE APPROXIMATELY 20 FEET NORTH OF FENCE LINE
- 8) SOUTH 1/4 CORNER OF SECTION 5**
FOUND: 5/8" IRON ROD WITH YELLOW PLASTIC CAP MARKED STEVEN P. NESS PLS 811.
-- 12" DOUGLAS FIR BEARS N61 1/2"W, 25.3 FEET (RECORD N61 1/4"W, 25.3 FEET) WELL HEALED FACE AND TAG
-- 13" DOUGLAS FIR BEARS N27"W, 28.2 FEET (RECORD N26 1/2"W, 28.0 FEET) WELL HEALED FACE AND TAG
-- 13" DOUGLAS FIR BEARS S25"E, 10.6 FEET (RECORD S24 1/4"E, 10.7 FEET) WELL HEALED FACE AND TAG
-- 13" DOUGLAS FIR BEARS S68 1/2"E, 14.6 FEET (RECORD S69"E, 14.6 FEET) WELL HEALED FACE AND TAG
CORNER LIES ON NORTHWEST SLOPE 1.5 FEET NORTH OF FENCE CORNER
- 9) 1/4 CORNER BETWEEN SECTION 4 AND 5**
FOUND: DOUGLAS COUNTY 1965 BRASS CAP.
-- 26" DOUGLAS FIR STUMP BEARS N51 1/2"E, 14.8 FEET (RECORD N45"E, 13.9 FEET) SCRIBING VISIBLE
-- 12" DOUGLAS FIR BEARS N80"E, 19.1 FEET WELL HEALED FACE NO RECORD
-- 26" DOUGLAS FIR BEARS S7 1/4"W, 32.6 FEET (RECORD S8"W, 32.8 FEET) WELL HEALED FACE AND TAG
-- 28" FIR SNAG BEARS N84"W, 29.7 FEET (RECORD N82"W, 29.7 FEET) WELL HEALED FACE
-- HAINES T-IRON BEARS N65°25'03"W, 11.37 FEET
CORNER LIES ON EAST FACING SLOPE APPROXIMATELY 200 FEET EAST OF RIDGE TOP.
- 10) NORTH 1/16 CORNER BETWEEN SECTIONS 4 AND 5**
FOUND: 5/8" IRON ROD WITH YELLOW PLASTIC CAP MARKED ROBERTS PLS 1039.
-- 7" DOUGLAS FIR BEARS S6 3/4"E, 7.4 FEET (RECORD S4"E, 7.6 FEET) SCRIBING VISIBLE AND TAG
-- 7" DOUGLAS FIR BEARS N70 1/4"W, 18.7 FEET (RECORD N68"W, 19.4 FEET) SCRIBING VISIBLE AND TAG
CORNER SITS ON WEST FACING SLOPE IN SLUMP AREA APPROXIMATELY 150 FEET WEST OF DRAW
- 11) NORTHEAST SECTION CORNER OF SECTION 5**
FOUND: 1" ALUM. PIPE 50 FEET EAST OF NORTH SOUTH FENCE LINE.
-- 21" OAK BEARS N13 1/4"W, 16.1 FEET (RECORD N12"W, 15.6 FEET) WEYCO TAG WELL HEALED FACE
-- 21" DOUGLAS FIR BEARS N51 1/2"E, 40.9 FEET (RECORD N52"E, 40.4 FEET) WEYCO TAG AND WELL HEALED FACE
-- 23" DOUGLAS FIR BEARS S80 3/4"E, 24.8 FEET (RECORD S80"E, 25.0 FEET) WEYCO TAG AND WELL HEALED FACE
CORNER LIES ON SLIGHT NORTH SLOPE 50 FEET EAST OF FENCE.

NARRATIVE

THIS SURVEY WAS INITIATED TO ESTABLISH PROPERTY CORNERS AND PROPERTY LINES FOR TIMBER CUTTING PURPOSES. WE INITIATED THIS SURVEY AT THE NORTH 1/4 CORNER OF SECTION 9, A HAINES T-BAR INSIDE A 1 1/2" IRON PIPE PERPETUATED FROM ORIGINAL EVIDENCE FOUND BY COUNTY SURVEYOR IN 1928. WE RAN A CLOSED LOOP TRAVERSE AROUND THE NORTHWEST 1/4 OF SECTION 9 TIEING IN THE NW CORNER AND THE WEST 1/4 WHICH ARE COUNTY BCIP'S PERPETUATED FROM ORIGINAL EVIDENCE AND THE CE 1/4 A COUNTY BCIP PERPETUATED FROM COUNTY SURVEY IN 1938. FROM OUR COMPUTATIONS WE SET THE NORTH 1/16, NORTHWEST 1/16, AND THE WEST 1/16 OF SECTION 9 AND MARKED THE PROPERTY LINES SHOWN HEREON

FROM THE WEST 1/16 OF SECTION 9 WE THEN BEGAN A CLOSED TRAVERSE TO TIE IN THE NWSC, NESC, AND THE EAST 1/4 OF SECTION 5 WHICH ARE COUNTY BCIP'S PERPETUATED FROM ORIGINAL EVIDENCE. WE ALSO TIED IN THE SOUTH 1/4 OF SECTION 5, PROPORTIONED BY NESS 1992 AND A PROPERTY CORNER ON THE EAST-WEST CENTERLINE OF SECTION 5 SET BY EDWARDS IN 1996. FROM OUR COMPUTATIONS WE SET THE NE 1/16 AND THE CE 1/16 OF SECTION 5. WE ALSO SET AN IRON ROD PROPERTY CORNER (16) AT THE INTERSECTION OF FENCE LINES AND AN IRON ROD IN A FENCE LINE AT A SAFE LOCATION 81 FEET EAST OF COUNTY ROAD CENTERLINE. WE MARKED PROPERTY LINES AS SHOWN HEREON IN SECTION 5. THIS SURVEY WAS DONE WITH A NIKON DTM 450 WITH GARY ANGIOLETT, JERRY RAGON, AND MARK DVORSCHAK ASSISTING ME

FILED
Date: 5/20/98 By: JP
This survey consists of:
Map: M 128-60
Narrative:
Corner Rpt:

JC DOUGLAS COUNTY SURVEYOR

MAP FILE M 128-60

MAP FILE M 128-60