

**SURVEY FOR
U. S. R. COMPANY
N 1/2 OF SECTION 2, T26S, R3W, W.M.
DOUGLAS COUNTY, OREGON
APRIL 20, 1998**



Scale: 1"=600 ft
0 600' 1200'

CORNER NOTES

- (1) SECTION CORNER 34-35/3-2
FOUND: 1943 G L D 2 1/2" B C, .9 FT. ABOVE GROUND
BTS: 46" D. FIR, N01E, 21.4 FT., HEALED FACE, STUMP
5" D. FIR, N56E, 10.9 FT., HEALED FACE
10" D. FIR, S26E, 41.9 FT., HEALED FACE
43" D. FIR, S45W, 6.6 FT., HEALED FACE
23" CEDAR, N62W, 12.5 FT., HEALED FACE
SET STEEL FENCE POST 1 FOOT NORTH
- (2) 1/4 CORNER SECTION 35/2
FOUND: 1997 D C S D 2 3/8" B C, .75 FT. ABOVE GROUND
BTS: 12" D. FIR, N45E, 22.1 FT., SCRIBING VISIBLE
13" D. FIR, S33E, 24.1 FT., SCRIBING VISIBLE
7" D. FIR, S87W, 20.0 FT., SCRIBING VISIBLE
7" D. FIR, N56W, 20.7 FT., SCRIBING VISIBLE
50" D. FIR, S51W, 34.0 FT., SCRIBING VISIBLE, STUMP
38" CEDAR, N48W, 44.0 FT. (TO CENTER), ROTTEN-BURN'T SNAG
17" W. HEMLOCK, S25W, 68.2 FT., HEALED FACE
- (3) SECTION CORNER 35-36/2-1
FOUND: 1943 G L D 2 1/2" B C, .6 FT. ABOVE GROUND
BTS: 34" D. FIR, N57W, 26.9 FT., HEALED FACE
34" D. FIR, S84W, 33.4 FT., HEALED FACE, STUMP, 8" NAIL-TOP CENTER
44" D. FIR, S72E, 53.4 FT.,
38" D. FIR, N30E, 6.3 FT.,
- (4) N 1/16 CORNER SECTION 3-2
FOUND: 1995 B L M 3.0" B C, .1 FT. ABOVE GROUND
BTS: 9" D. FIR, S89E, 18.1 FT., SCRIBING VISIBLE
9" D. FIR, N19E, 6.8 FT., SCRIBING VISIBLE
FOUND: 1.25" I. PIPE, N02°38'57"E, 3.21 FT. (BARTA)
SET STEEL FENCE POST 1 FOOT EAST
- (5) NW 1/16 CORNER SECTION 2
SET: 5/8" X 30" REBAR /W YPC "LS 2603", .3 FT. ABOVE GROUND
BTS: 9" D. FIR, N32W, 10.3 FT., BLAZED & SCRIBED "NW 1/16 S2 BT",
15" D. FIR, S38W, 6.9 FT.,
SET STEEL FENCE POST 1 FOOT WEST
- (6) CN 1/16 CORNER SECTION 2
SET: 5/8" X 30" REBAR /W YPC "LS 2603", .3 FT. ABOVE GROUND
BTS: 7" D. FIR, S09E, 6.5 FT., BLAZED & SCRIBED "CN 1/16 S2 BT",
9" D. FIR, WEST, 35.7 FT.,
SET STEEL FENCE POST 1 FOOT SOUTH

LEGEND

- = SET 5/8" X 30" REBAR /W YPC "LS 2603"
- = CORNERS FOUND AS NOTED
- ⊕ = CORNER POSITION ONLY, NO MONUMENT FOUND
- |— = PROPERTY BOUNDARY BLAZES RED /W RED RIBBON
- D C S D = DOUGLAS COUNTY SURVEY OFFICE
- B C = BRASS CAP

REFERENCES

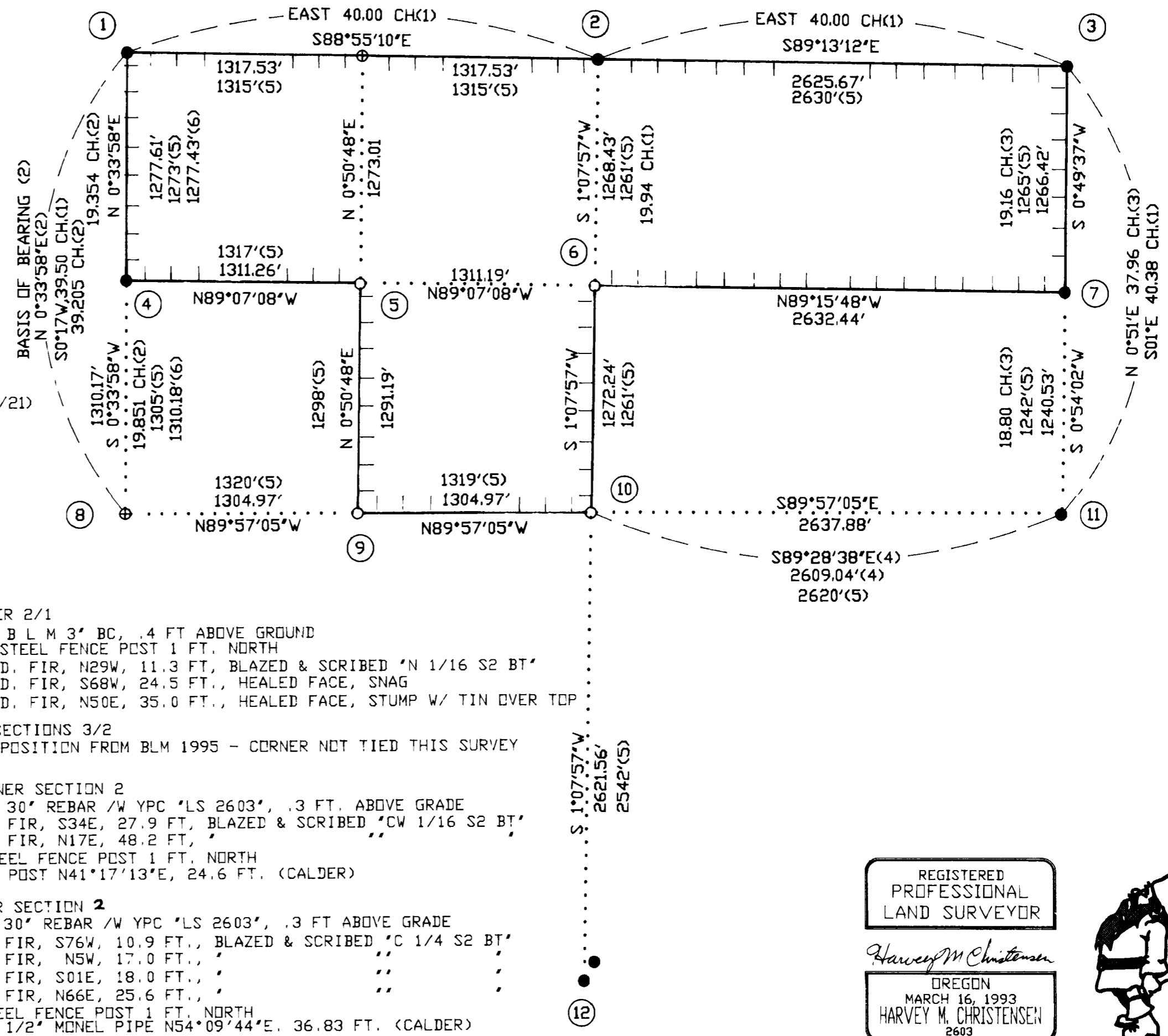
- (1) 1882 G L D (SAMUAL FLINT)
- (2) 1995 BLM RESURVEY
- (3) 1963 BLM RESURVEY
- (4) M56-34 (INVALIDATED BY CS 59/21)
- (5) CS 51/87 CALDER (INVALIDATED BY CS 59/21)
- (6) CS 51/306 BARTA

NARRATIVE

THE PURPOSE OF THIS SURVEY WAS TO MARK SOME OF THE PROPERTYLINE FOR U.S.R. COMPANY IN SECTION 2, T26S, R3W, W. M., DOUGLAS COUNTY, OREGON. ALL CORNERS WERE SET IN ACCORDANCE WITH THE BLM MANUAL OF SURVEYING INSTRUCTIONS 1973. THE NOTES FOR THE ORIGINAL GLO SURVEY (SAMUAL FLINT 1882) LOTTED THIS SECTION TO THE SOUTH BUT THE PLAT SHOWED THE LOTTING TO THE NORTH (NORMAL) AND THAT IS HOW I SUBDIVIDED THIS SECTION. ALSO THE SOUTH 1/4 OF SECTION 2 WAS PROPORTIONED BY BAUGHMAN, RM 2-69, 1974, AND WAS DETERMINED TO BE CORRECT BY DOUGLAS COUNTY DECREE #75-210. A NIKON A20LG TOTAL STATION WAS USED TO MEASURE ANGLES AND DISTANCES. BEARING TREES REFERENCED ON THIS SURVEY WERE MEASURED WITH A HAND COMPASS AND 50' DIAMETER TAPE. BEARINGS ARE BASED ON THE NORTH-SOUTH LINE BETWEEN SECTIONS 3 AND 2 OF 1995 BLM RESURVEY (UNOFFICIAL)

FILED
Date: 5/2/1998 By: JP
This survey consists of:
Map: M 128-59
Narrative:
Corner Rpt:

DOUGLAS COUNTY SURVEYOR
JP



- (7) N 1/16 CORNER 2/1
FOUND: 1963 B L M 3" BC, .4 FT. ABOVE GROUND
SET STEEL FENCE POST 1 FT. NORTH
BTS: 7" D. FIR, N29W, 11.3 FT., BLAZED & SCRIBED "N 1/16 S2 BT",
29" D. FIR, S68W, 24.5 FT., HEALED FACE, SNAG
13" D. FIR, N50E, 35.0 FT., HEALED FACE, STUMP W/ TIN OVER TOP
- (8) 1/4 CORNER SECTIONS 3/2
CALCULATED POSITION FROM BLM 1995 - CORNER NOT TIED THIS SURVEY
- (9) CW 1/16 CORNER SECTION 2
SET: 5/8" X 30" REBAR /W YPC "LS 2603", .3 FT. ABOVE GRADE
BTS: 14" D. FIR, S34E, 27.9 FT., BLAZED & SCRIBED "CW 1/16 S2 BT",
13" D. FIR, N17E, 48.2 FT.,
SET STEEL FENCE POST 1 FT. NORTH
FOUND: POST N41°17'13"E, 24.6 FT. (CALDER)
- (10) C 1/4 CORNER SECTION 2
SET: 5/8" X 30" REBAR /W YPC "LS 2603", .3 FT. ABOVE GRADE
BTS: 9" D. FIR, S76W, 10.9 FT., BLAZED & SCRIBED "C 1/4 S2 BT",
11" D. FIR, NSW, 17.0 FT.,
6" W. FIR, S01E, 18.0 FT.,
9" D. FIR, N66E, 25.6 FT.,
SET STEEL FENCE POST 1 FT. NORTH
FOUND: 1/2" MONEL PIPE N54°09'44"E, 36.83 FT. (CALDER)
- (11) 1/4 CORNER SECTIONS 2-1
FOUND: 1963 B L M 3.25" BC, .5 FT. ABOVE GROUND
BTS: 7" D. FIR, N60W, 47.5 FT., BLAZED & SCRIBED "1/4 S2 BT",
10" D. FIR, N58E, 39.3 FT.,
21" D. FIR, S73W, 4.0 FT., NO FACE VISIBLE
25" D. FIR, S39E, 20.5 FT., HEALED FACE
FOUND: 1" I. PIPE ALONG SOUTH SIDE OF BC
- (12) 1/4 CORNER SECTIONS 2/11
FOUND: 1976 D C S D 2 1/2" BC, .9 FT. ABOVE GROUND
BTS: 13" D. FIR, N08W, 24.0 FT., HEALED FACE
28" D. FIR, S08E, 25.7 FT., HEALED FACE
21" D. FIR, S70W, 22.0 FT., BLAZED & SCRIBED "1/4 S11 BT",
21" D. FIR, N28W, 26.8 FT., "1/4 S2 BT",
FOUND: 5/8" REBAR ALONG NW SIDE OF BC
FOUND: 5/8" REBAR N28°50'34"E, 119.86 FT. (EPPSTEIN)

REGISTERED
PROFESSIONAL
LAND SURVEYOR
Harvey M. Christensen
OREGON
MARCH 16, 1993
HARVEY M. CHRISTENSEN
2603



LICENSE RENEWAL DATE DECEMBER 31, 1999

NORTHWEST TIMBERLAND CONSULTING, INC.
4680 BRIARS - EUGENE, OR 97404-1113
PHONE OR FAX (541) 461-4076

MAP FILE M 128-59

MAP FILE M 128-59