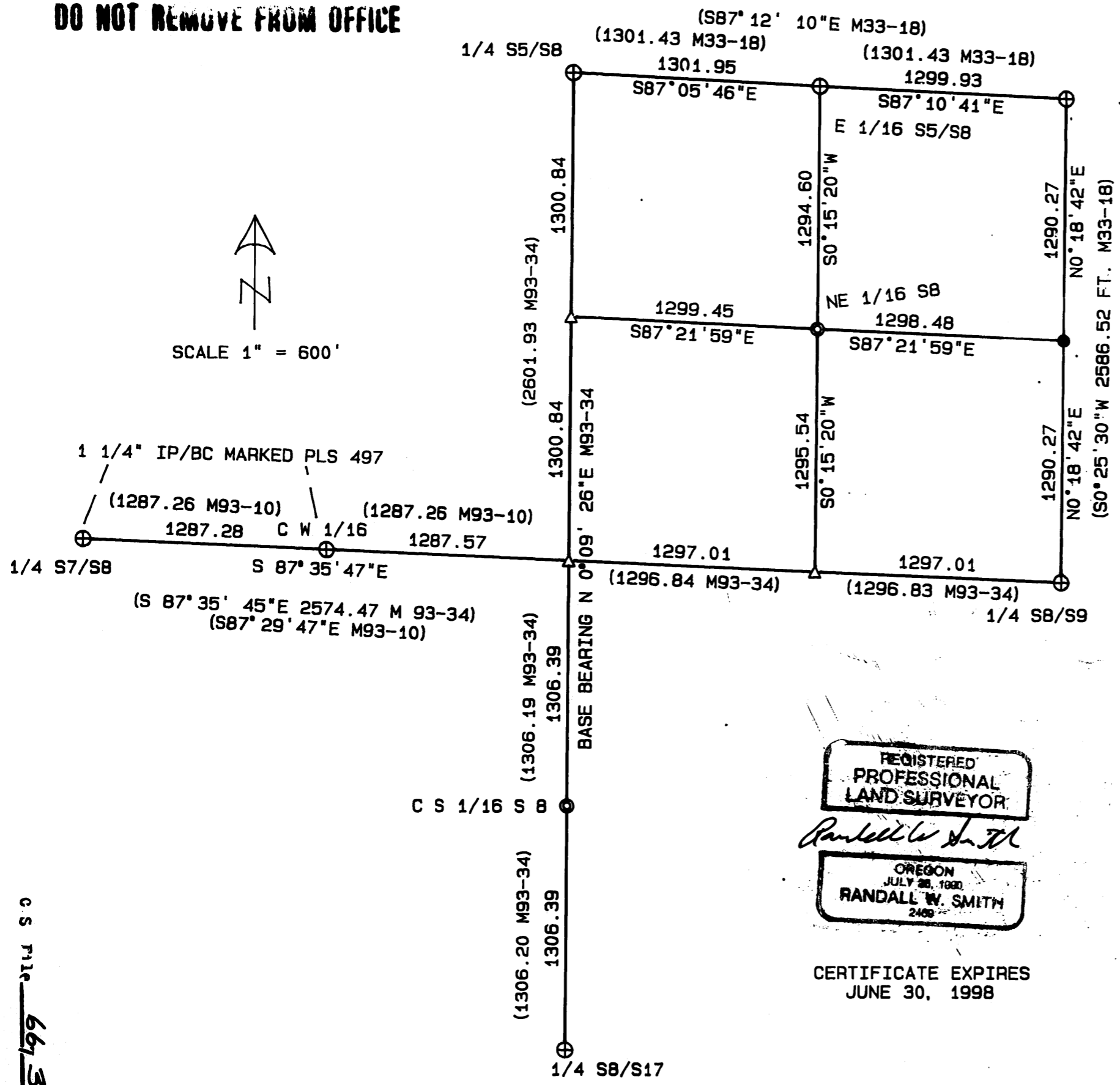
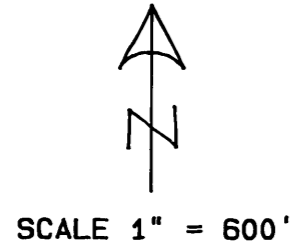


COUNTY SURVEYORS FILE DATA
DO NOT REMOVE FROM OFFICE

SURVEY FOR
DOUGLAS COUNTY LAND DEPT
IN
SECTION 8 T 21 S R 11 W WM

FILED
Date: 5/14/1998 By: JP
This survey consists of:
Map: M/28-58
Narrative: CS 66/3
Corner Rpt: CS 66/2
DOUGLAS COUNTY SURVEYOR



SURVEY DATE: APRIL 1998
SURVEY BY DOUGLAS COUNTY SURVEYOR'S OFFICE
RM. 105-A COURTHOUSE ROSEBURG, OR. 97470
SECTION 8 WAS SUBDIVIDED ACCORDING TO THE
MANUAL OF SURVEY INSTRUCTION. CONTROLLING
CORNERS WERE FOUND AND USED AS SHOWN.
BEARINGS WERE BASED ON THE NORTH-SOUTH
CENTER LINE AS SHOWN BY GEISLER M 93-34.

- LEGEND:
- ⊕ FOUND DCSO BC UNLESS OTHERWISE NOTED
 - SET 2 3/8" DIA. BRASS CAP ON 1 5/8" OD X 32" GALV. IP. CAPS MARKED DOUGLAS CO. SURVEYOR'S OFFICE. SEE DCSO CORNER RECORDS FOR BT AND ADDITIONAL INFORMATION.
 - SET 5/8" X 30" IRON ROD WITH ALUM. CAP MARKED DOUGLAS CO. SURVEYOR'S OFFICE. SEE DCSO CORNER RECORDS FOR BT AND ADDITIONAL INFORMATION.
 - △ CALCULATED POINT - NOT FOUND - NOT SET.

REGISTERED
PROFESSIONAL
LAND SURVEYOR
Randall W. Smith
OREGON
JULY 28, 1990
RANDALL W. SMITH
2409

CERTIFICATE EXPIRES
JUNE 30, 1998

Map File M/28-58
C S File 66/3

U S File 66/3
Map File M/28-58

SURVEY FOR
DOUGLAS COUNTY LAND DEPT.

IN
SECTION 8 T 21 S R 11 W WM

SURVEY DATE: APRIL 1998

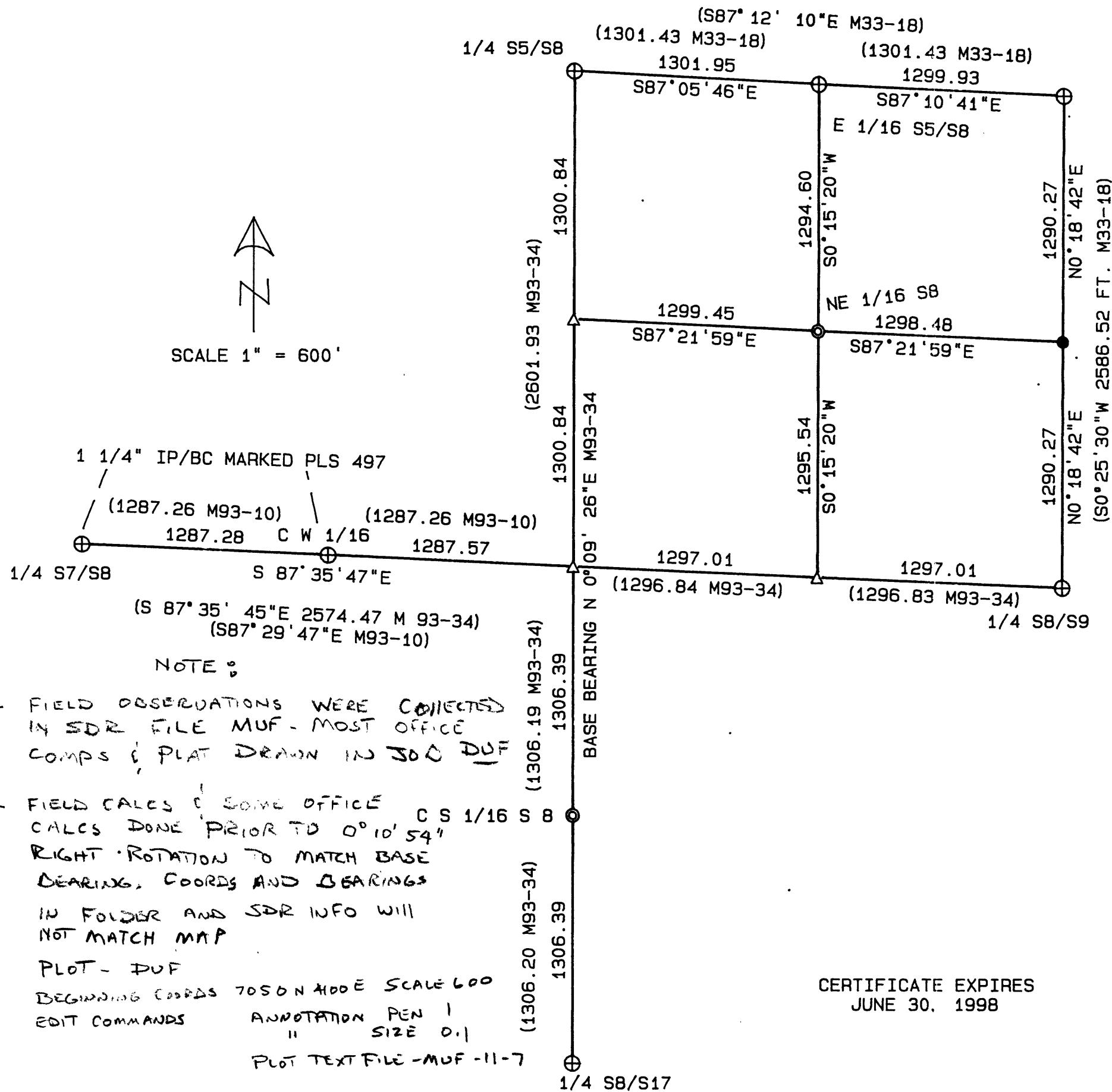
SURVEY BY DOUGLAS COUNTY SURVEYOR'S OFFICE
RM. 105-A COURTHOUSE ROSEBURG, OR. 97470

SECTION 8 WAS SUBDIVIDED ACCORDING TO THE
MANUAL OF SURVEY INSTRUCTION. CONTROLLING
CORNERS WERE FOUND AND USED AS SHOWN.

BEARINGS WERE BASED ON THE NORTH-SOUTH
CENTER LINE AS SHOWN BY GEISLER M 93-34.

LEGEND:

- ⊕ FOUND DCSO BC UNLESS OTHERWISE NOTED
- ⊙ SET 2 3/8" DIA. BRASS CAP ON 1 5/8" OD X 32" GALV. IP. CAPS MARKED DOUGLAS CO. SURVEYOR'S OFFICE. SEE DCSO CORNER RECORDS FOR BT AND ADDITIONAL INFORMATION.
- SET 5/8" X 30" IRON ROD WITH ALUM. CAP MARKED DOUGLAS CO. SURVEYOR'S OFFICE. SEE DCSO CORNER RECORDS FOR BT AND ADDITIONAL INFORMATION.
- △ CALCULATED POINT - NOT FOUND - NOT SET.



SCALE 1" = 600'

1 1/4" IP/BC MARKED PLS 497

(1287.26 M93-10) (1287.26 M93-10)
1287.28 C W 1/16 1287.57
1/4 S7/S8 S 87° 35' 47"E
(S 87° 35' 45"E 2574.47 M 93-34)
(S87° 29' 47"E M93-10)

NOTE :

- FIELD OBSERVATIONS WERE COLLECTED IN SDR FILE MUF - MOST OFFICE COMPS & PLAT DRAWN IN 300 DUF
- FIELD CALCS & SOME OFFICE CALCS DONE PRIOR TO 0°10'54" RIGHT ROTATION TO MATCH BASE BEARINGS, COORDS AND BEARINGS IN FOLDER AND SDR INFO WILL NOT MATCH MAP
- PLAT - DUF
- BEGINNING COORDS 7050 N 400 E SCALE 600
- EDIT COMMANDS ANNOTATION PEN 1 SIZE 0.1
- PLAT TEXT FILE - MUF - 11-7

PEN 1 = 0.35, PEN 2 = FIBER 2P/T FINE PEN 3 = 0.5

CERTIFICATE EXPIRES
JUNE 30, 1998

C.S. File No. 66/3

CS FILE FOLDER

CONTAINS

MORE

INFORMATION