

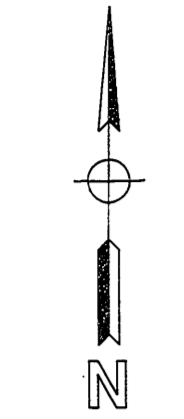
FILED

Date: 1-20-98 By: J.P.
This survey consists of:
Map: M 128-18
Narrative:
Corner Rpt:

DOUGLAS COUNTY SURVEYOR

MAP FILE M 128-18

A SURVEY FOR SILVER BUTTE TIMBER CO.
IN SECTION 12, T31S, R6W, W.M.
DOUGLAS COUNTY, OREGON



1" = 400'

OCTOBER 1997

SILVER BUTTE

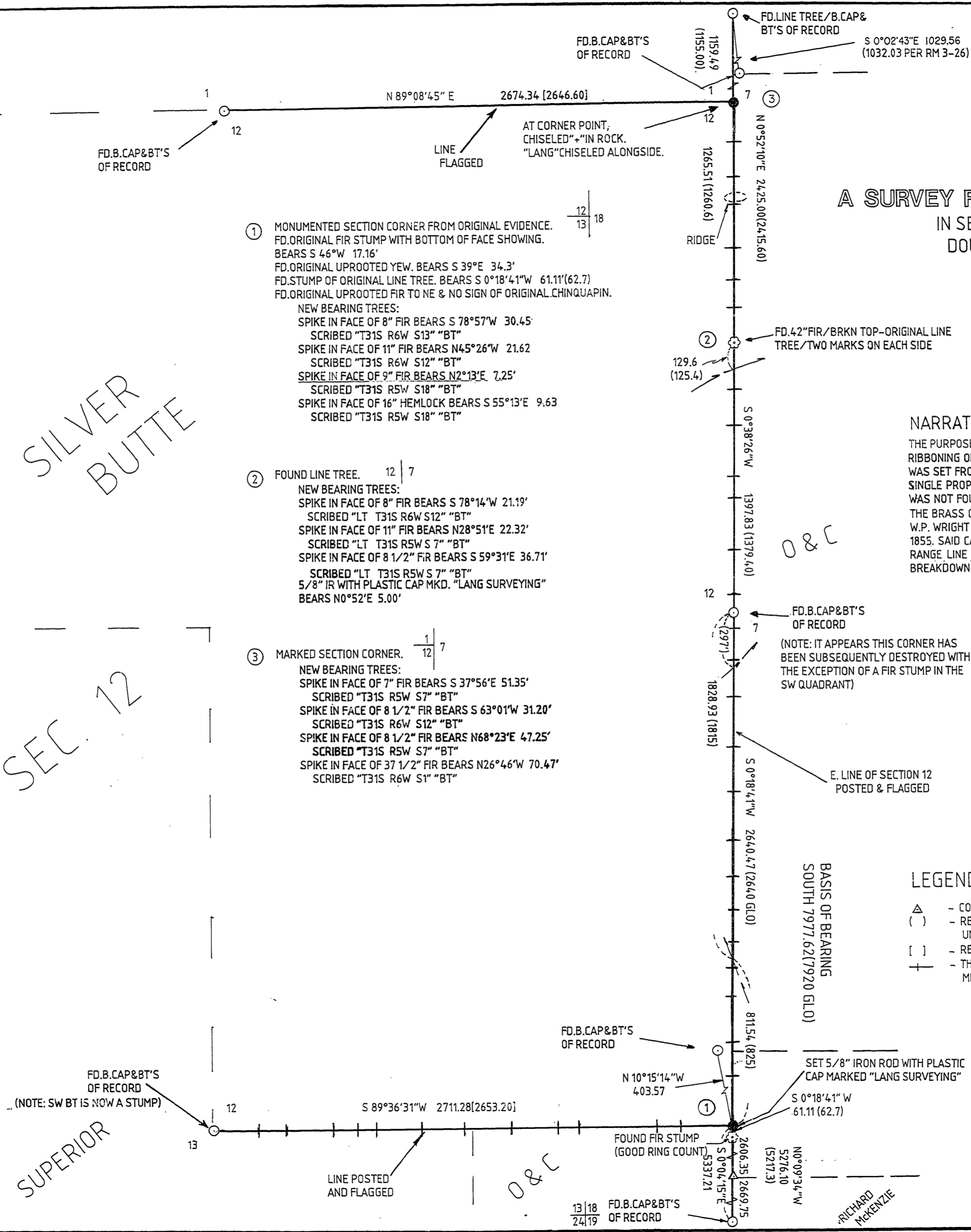
SEC. 12

REGISTERED PROFESSIONAL LAND SURVEYOR
Gregory D. Lang
OREGON
JULY 16, 1987
GREGORY D. LANG
#2295

EXPIRES-12-31-98

SUPERIOR

MAP FILE M 128-18



① MONUMENTED SECTION CORNER FROM ORIGINAL EVIDENCE.
FD. ORIGINAL FIR STUMP WITH BOTTOM OF FACE SHOWING.
BEARS S 46°W 17.16'
FD. ORIGINAL UPROOTED YEW. BEARS S 39°E 34.3'
FD. STUMP OF ORIGINAL LINE TREE. BEARS S 0°18'41"W 61.11'(62.7)
FD. ORIGINAL UPROOTED FIR TO NE & NO SIGN OF ORIGINAL CHINQUAPIN.
NEW BEARING TREES:
SPIKE IN FACE OF 8" FIR BEARS S 78°57'W 30.45'
SCRIBED "T31S R6W S13" "BT"
SPIKE IN FACE OF 11" FIR BEARS N45°26'W 21.62'
SCRIBED "T31S R6W S12" "BT"
SPIKE IN FACE OF 9" FIR BEARS N2°13'E 7.25'
SCRIBED "T31S R5W S18" "BT"
SPIKE IN FACE OF 16" HEMLOCK BEARS S 55°13'E 9.63
SCRIBED "T31S R5W S18" "BT"

② FOUND LINE TREE. 12 | 7
NEW BEARING TREES:
SPIKE IN FACE OF 8" FIR BEARS S 78°14'W 21.19'
SCRIBED "LT T31S R6W S12" "BT"
SPIKE IN FACE OF 11" FIR BEARS N28°51'E 22.32'
SCRIBED "LT T31S R5W S7" "BT"
SPIKE IN FACE OF 8 1/2" FIR BEARS S 59°31'E 36.71'
SCRIBED "LT T31S R5W S7" "BT"
5/8" IR WITH PLASTIC CAP MKD. "LANG SURVEYING"
BEARS N0°52'E 5.00'

③ MARKED SECTION CORNER. 1 | 12 | 7
NEW BEARING TREES:
SPIKE IN FACE OF 7" FIR BEARS S 37°56'E 51.35'
SCRIBED "T31S R5W S7" "BT"
SPIKE IN FACE OF 8 1/2" FIR BEARS S 63°01'W 31.20'
SCRIBED "T31S R6W S12" "BT"
SPIKE IN FACE OF 8 1/2" FIR BEARS N68°23'E 47.25'
SCRIBED "T31S R5W S7" "BT"
SPIKE IN FACE OF 37 1/2" FIR BEARS N26°46'W 70.47'
SCRIBED "T31S R6W S1" "BT"

NARRATIVE:

THE PURPOSE OF THIS SURVEY WAS FOR THE MONUMENTATION, POSTING & RIBBONING OF BOUNDARIES AS SHOWN. THE SOUTHEAST CORNER OF SECTION 12 WAS SET FROM ORIGINAL EVIDENCE. THE NORTHEAST CORNER OF 12 WAS SET BY SINGLE PROPORTION BETWEEN THE TWO FOUND LINE TREES. ORIGINAL EVIDENCE WAS NOT FOUND @ THE NORTHEAST CORNER OF SECTION 12. THE BRASS CAPS SHOWN HEREON WHICH REPRESENT POSITIONS ESTABLISHED BY W.P. WRIGHT IN 1878 ARE NOT ON THE RANGE LINE AS SURVEYED BY G.W. HYDE IN 1855. SAID CAPS ARE JUNIOR CORNERS AND THEY DO NOT CONTROL THE ORIGINAL RANGE LINE BETWEEN T31S,R5W AND T31S,R6W; NEITHER DO THEY CONTROL THE BREAKDOWN OF SECTIONS 1 & 12, T31S,R6W.

FIELD CREW: THE LANGS
EQUIP: TM6 & RED1
COMPS: GREG LANG
DRAFTING: LAURIE LANG

LEGEND:

- △ - COMPUTED POINT
- () - RECORD PER 1855 GLO SURVEY BY GEORGE W. HYDE UNLESS OTHERWISE NOTED.
- [] - RECORD PER W.H. BYARS 1882 GLO SURVEY..
- + - THIS SYMBOL INDICATES APPROX. LOCATION OF METAL POSTS.