

MAP FILE M128-17

SURVEY FOR:
STATE OF OREGON - DEPARTMENT OF FORESTRY
SECTION 14, T. 23S., R. 10W., W.M.
DOUGLAS COUNTY, OREGON
THEODOLITE AND EDM SURVEY BY:
L.D. SMITH AND T. VAN VLEET
DRAWN BY: T. VAN VLEET
DECEMBER 29, 1997
SCALE 1" = 200'

BASIS OF BEARING

ARNOLD G. GIBSON 1972 SURVEY (COUNTY SURVEY NO. M49-20) FROM THE NORTH 1/16 CORNER 14 AND 13 TO THE SECTION CORNER OF SECTIONS 11, 12, 13 AND 14 TOWNSHIP 23 SOUTH, RANGE 10 WEST, WILLAMETTE MERIDIAN.

SURVEY BY:

REGISTERED
PROFESSIONAL
LAND SURVEYOR

Lloyd D. Smith

OREGON
JULY 22, 1977
LLOYD D. SMITH
1101

LLOYD D. SMITH
300 5TH ST. BAY PARK
COOS BAY, OREGON

EXPIRATION DATE OF CERTIFICATE 6-30-98

FILED

Date: 1-20-98 By: JP

This survey consists of:

Map: M128-17

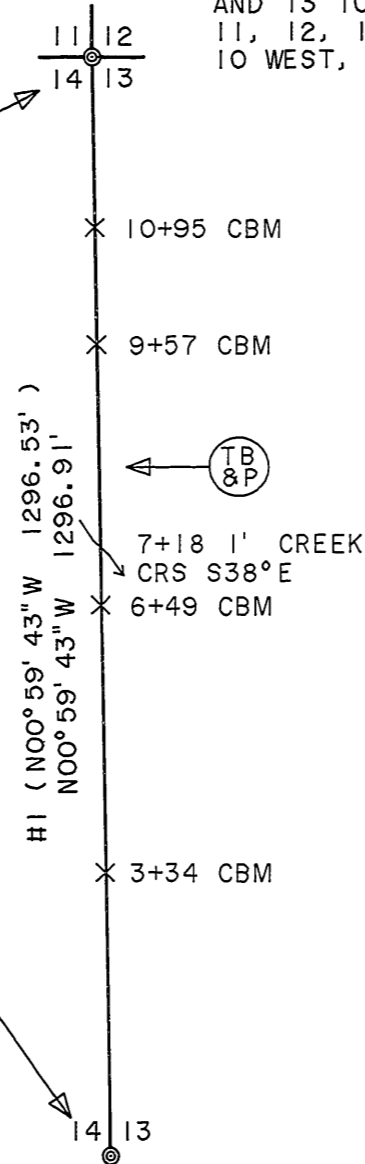
Narrative: _____

Corner Rpt: _____

DOUGLAS COUNTY
JP SURVEYOR

SECTION CORNER FOUND
1 1/4" IP WITH BRASS CAP, 1990 (IN PLACE WITH DOUGLAS COUNTY SURVEYORS P/C ALONGSIDE OUT OF GROUND)
42" FIR (DCS) N78°W 21.78' (NOW 43" X 3' HIGH STUMP IN PLACE, FACE CLOSED BTT)
48" FIR STUMP (DCS) S11°W 42.90' (NOW 32" X 3' HIGH STUB IN PLACE, BTT)
40" FIR STUMP (ORIG) S43°E 36.96' (NOW 27" X 3' HIGH STUMP IN PLACE, FACE CHOPPED OUT NO SCRIBES VISIBLE)
18" MAPLE (1990) S07°E 36.6' (NOW 20" DYING MAPLE IN PLACE, BTT)
27" HEMLOCK SNAG (1990) N06°E 39.4' (NOW 24" X 10' HIGH STUMP IN PLACE, FACE CLOSED BTT)
48" FIR (DCS) N48°E 5.94' (NOW WINDFALL FACE BURIED)
REWITNESSED
WP N55°W 4.1' TO BASE
WP S61°W 4.5' TO BASE

NORTH ONE SIXTEENTH CORNER FOUND
OSBF P/C, 1972 (IN PLACE)
9" HEMLOCK S40°W 40.8' (NOW 15" WINDFALL)
9" ALDER N30 1/2°E 22.9' (NOW 12" WINDFALL)
WPCP EAST 5.0' (NOW DOWN AND ROTTEN ALONGSIDE PIPE)
METAL FENCE POST SOUTH .9' NO RECORD
REWITNESSED
WP S89°W 2.4' TO BASE
WP S61°E 3.0' TO BASE
CREEK 1' WIDE SOUTH 4.0' CRS S53°E



- LEGEND**
- OSBF P/C = OREGON STATE BOARD OF FORESTRY 1 1/2" X 36" GALVANIZED IRON PIPE WITH 3" BRONZE CAP
 - = TRUE BLAZED AND POSTED
 - = ORANGE CARSONITE MARKER AND STATION CBM-250, LABELED BOUNDARY MARKER
 - = FOUND CORNER
 - WP = ORANGE CARSONITE MARKER CBM-250, LABELED WITNESS POST
 - IP = IRON PIPE
 - BT = BEARING TREE
 - BTT = BEARING TREE TAG
 - CRS = COURSE
 - DCS = DOUGLAS COUNTY SURVEYOR
 - WPCP = 4" X 4" X 72" WHITE PAINTED CEDAR POST
 - #1 () = RECORD BEARING AND DISTANCE IN FEET
ARNOLD G. GIBSON, 1972, COUNTY SURVEY NO. M49-20

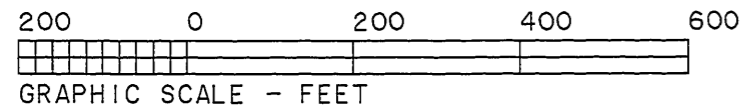
SURVEY NARRATIVE TO COMPLY WITH PARAGRAPH 209.250 OREGON REVISED STATUTES

PROCEDURE

A RANDOM TRAVERSE, USING A WILD T1000 THEODOLITE AND A DI 1600 EDM, WAS USED TO CONNECT CONTROLLING CORNERS. BEARING AND DISTANCE WERE COMPUTED AND OFFSETS CALCULATED TO POINTS ON TRUE LINE FOR CARSONITE BOUNDARY MARKERS. BEARINGS TO ACCESSORIES WERE TAKEN WITH A HAND COMPASS SET AT 19 1/2° EAST MAGNETIC DECLINATION. FOR A DETAILED REPORT ON FOUND CORNERS SEE COUNTY RECORDS.

PURPOSE

TO SEPARATE STATE FOREST LAND AND PRIVATE LANDS LOCATED IN SECTION 14, TOWNSHIP 23 SOUTH, RANGE 10 WEST, WILLAMETTE MERIDIAN.



MAP FILE M128-17