

NARRATIVE

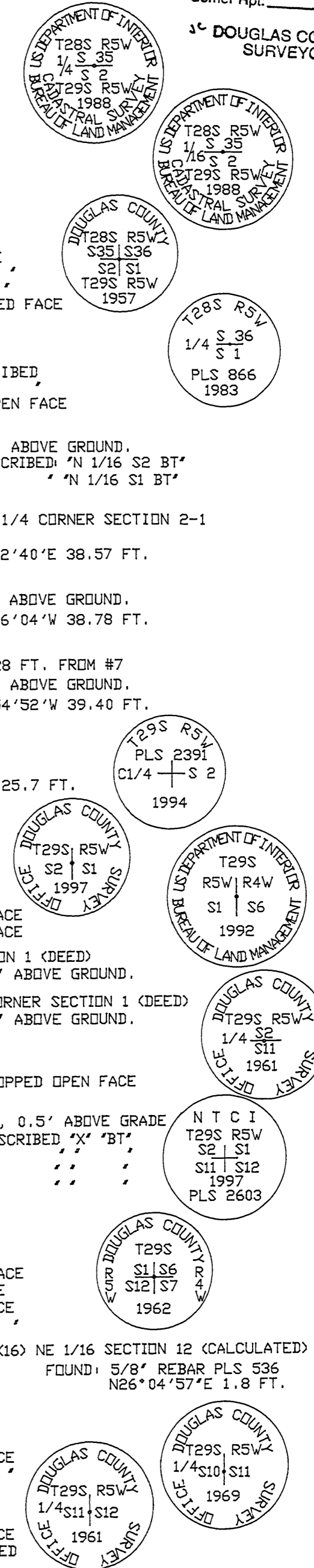
THE PURPOSE OF THIS SURVEY WAS TO MONUMENT THE PROPERTY LINES (AS NOTED) FOR McDUGAL BROTHERS AND ROSBORO LUMBER CO. IN SECTIONS 1, 2, 11, 12, OF TOWNSHIP 29 SOUTH, RANGE 5 WEST W.M.
ALL CORNERS IN THIS SURVEY WERE SET IN ACCORDANCE WITH THE BLM MANUAL OF SURVEYING INSTRUCTIONS 1973 OR AS PER DEED DESCRIPTION 93-16596 OF DOUGLAS COUNTY DEEDS & RECORDS. THE SECTION CORNER COMMON TO SECTIONS 2-1/11-12 WAS SET BY DOUBLE PROPORTIONATE METHOD AFTER A SEARCH FOR THE ORIGINAL CORNERS WERE COMPLETED.

BASIS OF BEARING FOR THIS SURVEY IS FROM A SOLAR OBSERVATION TAKEN NEAR THE 1/4 CORNER OF SECTIONS 2-1.

THIS SURVEY WAS PERFORMED USING A NIKON DTM A20LG TOTAL STATION AND A NIKON NTD-4 TO MEASURE ANGLES AND DISTANCES. BEARING TREES REFERENCED ON THIS SURVEY WERE MEASURED WITH A 50' DIAMETER TAPE TO THE SIDE CENTER OF THE TREE AND HAND COMPASS TO THE CENTER.

CORNER NOTES

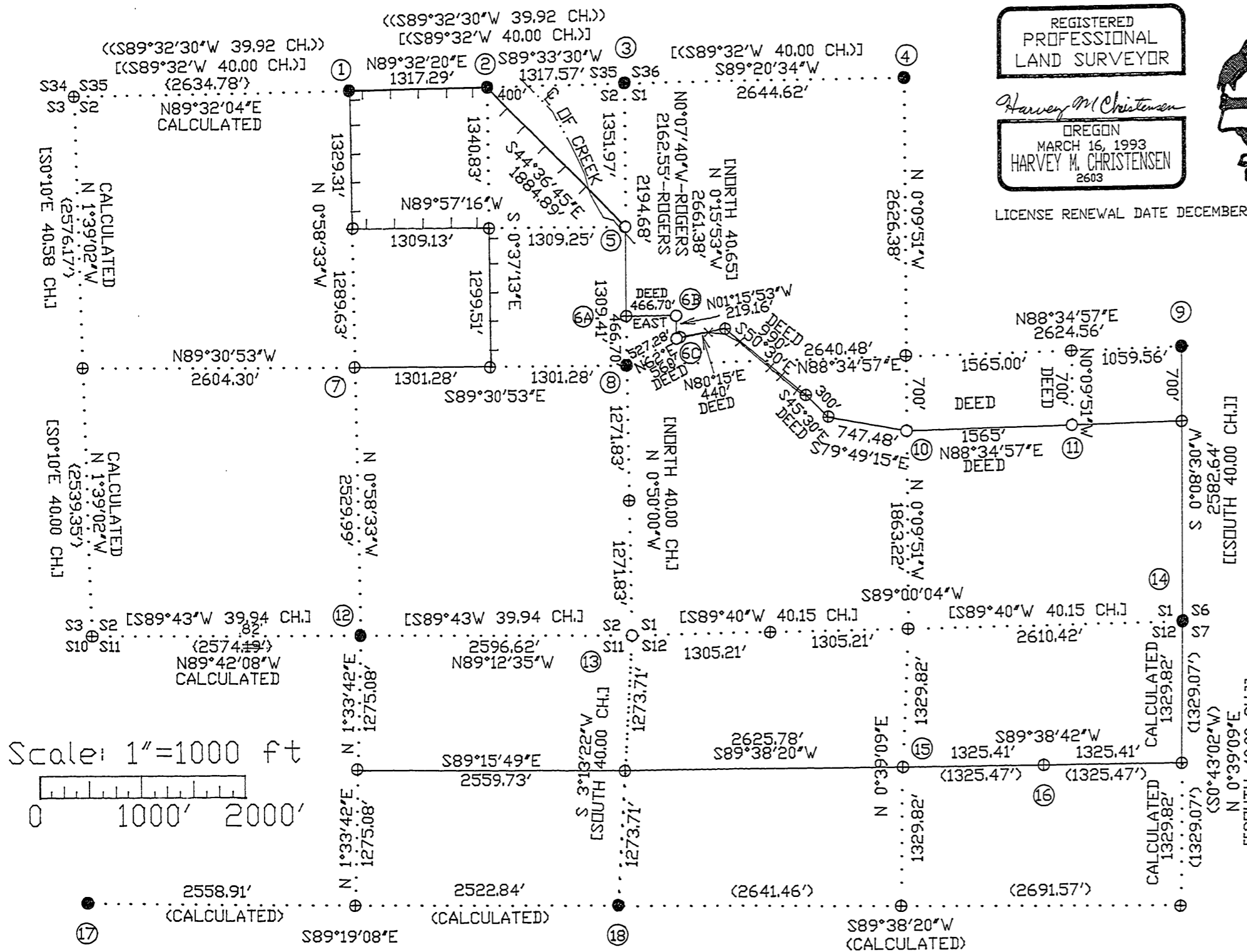
- (1) 1/4 CORNER SECTION 35/2
FOUND: 1988 B L M 3' B.C.
BTS: 16' D. FIR S38°E, 5.4 FT. HEALED FACE
BTS: 11' D. FIR N58°W, 8.1 FT.
- (2) E 1/16 SECTIONS 35/2
FOUND: 1988 B L M 3' B.C.
BTS: 20' D. FIR N72°W, 21.9 FT. HEALED FACE
7' D. FIR S08°W, 5.5 FT.
- (3) SECTION CORNER SECTIONS 35-36/2-1
FOUND: 1957 D.C.S.D. 2.5' B.C.
BTS: 16' D. FIR S17°E, 28.3 FT. HEALED FACE
21' D. FIR N10°W, 38.8 FT.
10' P. MADRONE N46°E, 24.8 FT.
8' P. MADRONE S08°W, 57.4 FT. STAUB-SCARED FACE
- (4) 1/4 CORNER SECTIONS 36/1
FOUND: 1983 2' B.C. LS 866
BTS: 9' P. MADRONE N58°E, 1.0 FT. BARK SCRIBED
9' P. MADRONE N43°W, 8.9 FT.
26' B. OAK N15°E, 69.1 FT. ROTTED OPEN FACE
- (5) N 1/16 CORNER SECTIONS 2-1
SET: 5/8" X 30' REBAR W/YPC "L.S. 2603" 4' ABOVE GROUND.
BTS: 5' D. FIR N77°W, 25.1 FT. BLAZED & SCRIBED "N 1/16 S2 BT"
18" B.L. MAPLE N59°E, 38.0 FT. "N 1/16 S1 BT"
SET 5' STEEL POST 1 FT. SOUTH
- (6A) PC ON SECTION LINE 466.7 FT. N00°15'53"W OF 1/4 CORNER SECTION 2-1
SET: MONUMENT NOT SET
FOUND: 5/8" REBAR CS 55/258-1 (ROGERS) N27°42'40"E 38.57 FT.
- (6B) PC 466.7 FT. EAST OF 6A
SET: 5/8" X 30' REBAR W/YPC "L.S. 2603" 4' ABOVE GROUND.
FOUND: 5/8" REBAR CS 55/258-1 (ROGERS) N25°46'04"W 38.78 FT.
SET 5' STEEL POST 1 FT. NORTH
- (6C) PC 219.16 FT. S00°15'53"E OF 6B--N62°E 527.28 FT. FROM #7
SET: 5/8" X 30' REBAR W/YPC "L.S. 2603" 4' ABOVE GROUND.
FOUND: 5/8" REBAR CS 55/258-1 (ROGERS) N25°54'52"W 39.40 FT.
SET 5' STEEL POST 1 FT. NORTH
- (7) C 1/4 SECTION 2
CALCULATED POSITION ONLY, NO MONUMENT SET
FOUND: 3.0' BC 94-08020 (BROWN) N00°24'53"E 25.7 FT.
- (8) 1/4 CORNER SECTION 2-1
FOUND: 1997 D.C.S.D. 2.5' B.C.
BTS: AS PER COUNTY RENEWAL 11-27-1996
- (9) 1/4 CORNER SECTIONS 1-6
FOUND: 1992 BLM 3' B.C.
BT: 26' D. FIR S52°E, 31.4 FT. HEALED FACE
20' D. FIR S76°W, 43.7 FT. HEALED FACE
- (10) PC 700' SOUTH OF CALCULATED C 1/4 CORNER SECTION 1 (DEED)
SET: 5/8" X 30' REBAR W/YPC "L.S. 2603" 2' ABOVE GROUND.
- (11) PC 700' SOUTH, 1565' EAST OF CALCULATED C 1/4 CORNER SECTION 1 (DEED)
SET: 5/8" X 30' REBAR W/YPC "L.S. 2603" 2' ABOVE GROUND.
- (12) 1/4 CORNER SECTION 2/11
FOUND: 1961 D.C.S.D. 2.5' B.C.
BT: 18' D. FIR STUMP N77°W, 12.7 FT. CHOPPED OPEN FACE
- (13) SECTION CORNER SECTIONS 2-1/11-12
SET: 1997 2.5' B.C. DN 2.0" X 30" I. PIPE, 0.5' ABOVE GRADE
BTS: 3' P. MADRONE N31°W, 13.3 FT. BLAZED & SCRIBED "BT"
3' P. MADRONE N02°E, 19.4 FT. "
3' P. MADRONE N49°W, 4.1 FT. "
4' P. MADRONE S45°E, 6.2 FT. "
SET 5' STEEL POST 1 FT. NORTH
- (14) SECTION CORNER SECTIONS 1-6/12-7
FOUND: 1962 D.C.S.D. 2.5' B.C.
BT: 18' D. FIR N50°E, 7.1 FT. HEALED FACE
6' D. FIR S42°W, 44.7 FT. OPEN FACE
30' I. CEDAR S32°E, 22.2 FT. HEALED FACE
28' I. CEDAR N21°W, 37.3 FT.
- (15) CN 1/16 SECTION 12 (CALCULATED)
FOUND: 1980 2.5' B.C. PLS 536
N00°52'50"E 5.67 FT.
- (16) NE 1/16 SECTION 12 (CALCULATED)
FOUND: 5/8" REBAR PLS 536
N26°04'57"E 1.8 FT.
- (17) 1/4 CORNER SECTIONS 10-11
FOUND: 1969 D.C.S.D. 2.5' B.C.
BT: 18' B. OAK N08°E, 27.4 FT. HEALED FACE
28' W. OAK N22°W, 43.3 FT.
- (18) 1/4 CORNER SECTIONS 11-12
FOUND: 1961 D.C.S.D. 2.0' B.C.
BT: 12' B. OAK N07°E, 88.8 FT. HEALED FACE
NW & SE ORIGINAL OAK BTS DOWN & BURNED



REGISTERED PROFESSIONAL LAND SURVEYOR

Harvey M. Christensen
OREGON
MARCH 16, 1993
HARVEY M. CHRISTENSEN
2603

LICENSE RENEWAL DATE DECEMBER 31, 1999



LEGEND

- = SET 5/8" X 30' REBAR /W YPC "LS 2603" OR AS NOTED
- = CORNERS FOUND AS NOTED
- ⊕ = CORNER POSITION ONLY, NO MONUMENT FOUND OR SET.
- — — = PROPERTY BOUNDARY BLAZED AND PAINTED RED /W RED RIBBON
- *-*- = FENCE LINES (NTS)
- D C S D = DOUGLAS COUNTY SURVEY OFFICE
- P C = PROPERTY CORNER

REFERENCE MEASUREMENTS OF RECORD AS NOTED

- [()] = 1853 GLO SURVEY (ELDER & GILE)
- [[]] = 1854 GLO SURVEY (NATHANAL FORD)
- [[]] = 1851 GLO SURVEY (JAMES FREEMAN) T29S-R4W
- [()] = 1988 BLM RESURVEY
- [()] = 1994-0021 (BROWN)
- [()] = CS M83-18 (BAUGHMAN)

SURVEY FOR
McDOUGAL BROTHERS AND ROSBORO LUMBER COMPANY
SECTIONS 1, 2, 11, 12, TOWNSHIP 29 SOUTH, RANGE 5 WEST, W.M.
DOUGLAS COUNTY, OREGON
NOVEMBER 15, 1997

NORTHWEST TIMBERLAND CONSULTING, INC.
4680 BRIARS STREET - EUGENE, OR 97404-1113
PHONE OR FAX (541) 461-4076