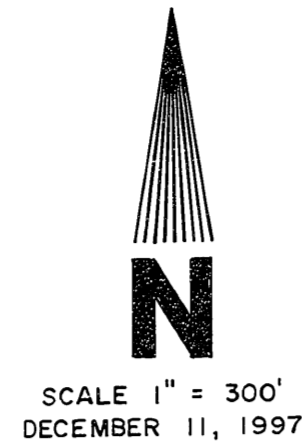


BOUNDARY SURVEY
 FOR
 W.E. McARTHUR AND ASSOCIATES, INC.
 IN
 SE1/4 SECTION 35, T21S, R5W, W.M.
 DOUGLAS COUNTY, OREGON
 BY
 ROBERTS SURVEYING INC.
 P.O. BOX 7155
 EUGENE, OREGON 97401
 PHONE 345-1112

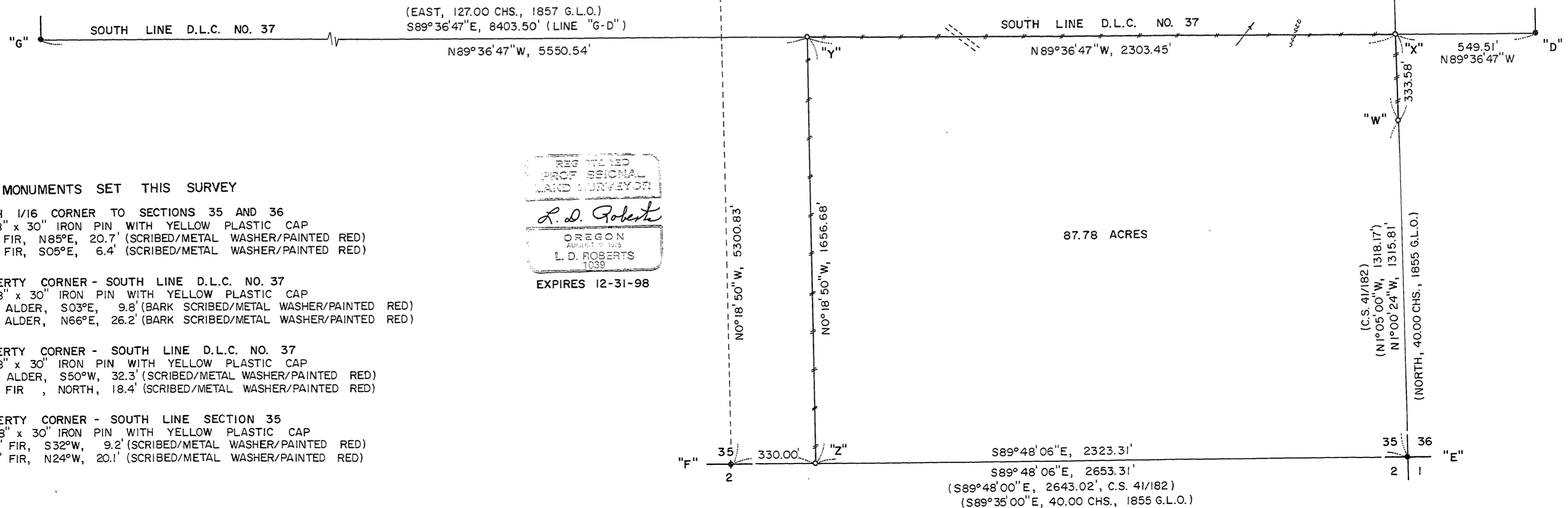


- LEGEND,
- MONUMENTS FOUND AND USED FOR CONTROL
 - △ COMPUTED POINT - NO MONUMENT SET
 - MONUMENTS SET - 5/8" x 30" IRON PINS WITH YELLOW PLASTIC CAPS. CAPS STAMPED ROBERTS SURVEYING INC.
 - () DATA OF RECORD - 1855 G.L.O. SURVEY BY GORDON AND GARDNER. 1857 D.L.C. SURVEY BY DENNIS HATHORN. SURVEY C.S. 41/182 BY B.M. MCGILLICUDDY IN 1953. SURVEY M123-29 BY LES ROBERTS.
 - LINES MARKED WITH RED PAINTED BLAZES AND RED PLASTIC RIBBON
- BASIS OF BEARING - LINE "B-C" FROM SURVEY M123-29 IN 1996.
 DISTANCES TO BEARING TREES ARE CENTER MEASURE.
 ALL NEW BEARING TREES ARE SCRIBED AND HAVE A METAL WASHER STAMPED P.L.S. 1039 NAILED TO LOWER BLAZE. LOWER BLAZES ARE PAINTED RED.

NARRATIVE, THE PURPOSE OF THIS SURVEY IS TO BLAZE AND PAINT THE FOLLOWING LINES. 1) LINE "W-X", 2) LINE "X-Y" AND LINE "Y-Z". ALSO MONUMENTS "W", "X", "Y" AND "Z" WERE SET IN THIS SURVEY. THE NORTH 1/4 CORNER, THE EAST 1/4 CORNER, THE S.E. CORNER OF D.L.C. NO. 37, THE S.E. SECTION CORNER, THE SOUTH 1/4 CORNER AND THE S.W. CORNER OF D.L.C. NO. 37 WERE FOUND IN THE FIELD AND USED AS CONTROL FOR THIS SURVEY. A SERIES OF RANDOM E.D.M. CONTROL TRAVERSES, USING A WILD T-16 THEODOLITE AND A DI-4L E.D.M., WERE RUN BETWEEN THE CONTROLLING CORNERS FOUND IN THE FIELD. THE SOUTH 1/16 CORNER TO SECTIONS 35 AND 36, MONUMENT "W", WAS SET HALFWAY BETWEEN THE FOUND EAST 1/4 CORNER AND THE FOUND S.E. SECTION CORNER. PROPERTY CORNER "X" WAS SET AT THE POINT OF INTERSECTION OF LINE "C-E" WITH LINE "D-G". PROPERTY CORNER "Z" WAS SET ON LINE "F-E", AT A DEED CALL, OF 5.00 CHS. EASTERLY OF FOUND MONUMENT "F". PROPERTY CORNER "Y" WAS SET BY INTERSECTION AS FOLLOWS. FROM MONUMENT "Z", A LINE WAS RUN NORTHERLY, PARALLEL TO THE NORTH-SOUTH CENTERLINE OF SECTION 35, TO ITS INTERSECTION WITH LINE "X-G" AT POINT "Y". THUS THE INVERSE BEARINGS AND DISTANCES OF N0°18'50"W, 1656.68 FEET FOR LINE "Z-Y" AND N89°36'47"W, 2303.45 FEET FOR LINE "X-Y". A CLOSED RANDOM PROPERTY LINE TRAVERSE, USING A WILD T-16 THEODOLITE AND A DI-4L E.D.M., WAS RUN ALONG ALL PROPERTY LINES TO BE BLAZED AND POSTED. OFFSETS WERE COMPUTED FROM THIS PROPERTY LINE TRAVERSE TO THE TRUE PROPERTY LINE.

CORNERS FOUND THIS SURVEY

- "A" NORTH 1/4 CORNER SECTION 35
 FD. 1997 B.L.M. IRON ROD WITH ALUMINUM CAP
 8" MAPLE STUMP, N36°E, 49.1' (SCRIBE VIS.), 1996 B.T.
 8" MAPLE, N44°E, 133.4' (SCRIBE VIS.), 1997 B.T.
 10" MAPLE, S54°E, 114.0' (SCRIBE VIS.), 1997 B.T.
 S.E., S.W. AND N.W. BEARING TREES SET IN SURVEY M123-29 WERE DESTROYED BY RECENT LOGGING
- "B" N.E. CORNER SECTION 35
 COMPUTED POINT - NO MONUMENT SET
 POSITION OF SECTION CORNER DETERMINED FROM COORDINATE VALUES COMPUTED IN MY 1996 SURVEY M123-29.
- "C" EAST 1/4 CORNER SECTION 35
 FD. 3/4" IRON PIPE SET BY B.M. MCGILLICUDDY IN C.S. 41/182
 12" FIR STUMP, S78°E, 49.7' (SCRIBE VIS.), 1855 B.T.
 48" FIR SNAG, S54°W, 26.7' (SCAR VIS.), 1953 B.T.
 31" FIR STUMP, N24°E, 46.6' (SCRIBE VIS.), 1953 B.T.
 10" FIR, N20°W, 18.5' (SCRIBE VIS.), 1996 B.T.
 12" FIR, S07°W, 12.7' (SCRIBE VIS.), 1996 B.T.
 FD. 5/8" IRON PIN SET BY GERALD RILEY IN 11-1994. PIN BEARS N63°46'W, 7.64' FROM 3/4" IRON PIPE. ALSO BEARING TREES BY RILEY IN 11-1994.
 10" FIR, S51°E, 16.4' (SCRIBE VIS.), 1994 B.T.
 10" FIR, NORTH, 13.9' (SCRIBE VIS.), 1994 B.T.
 12" FIR, S19°E, 16.9' (SCRIBE VIS.), 1994 B.T.
 12" FIR, N31°E, 23.5' (SCRIBE VIS.), 1994 B.T.
- "D" S.E. CORNER ELIJAH T. ESTES D.L.C. NO. 37
 FD. IRON BAR SET BY BEN IRVING IN 1941
 38" CEDAR, S75°E, 27.6' (SCAR VIS.), 1941 B.T.
 12" HEM., S27°W, 16.5' (SCAR VIS.), 1964 B.T.
- "E" S.E. CORNER SECTION 35
 FD. 1982 B.L.M. IRON PIPE AND BRASS CAP
 32" FIR STUMP, N55°W, 10.6' (SCRIBE VIS.), 1855 B.T.
 22" FIR, S55°E, 16.5' (SCAR VIS.), 1953 B.T.
 26" FIR, N65°E, 32.3' (SCAR VIS.), 1953 B.T.
 12" W. FIR, S47°W, 29.0' (SCAR VIS.), 1982 B.T.
 18" FIR, N26°W, 14.5' (SCAR VIS.), 1982 B.T.
- "F" SOUTH 1/4 CORNER SECTION 35
 FD. 1 1/2" AXLE SET BY B.M. MCGILLICUDDY IN C.S. 41/182
 NO 1953 BEARING TREES FOUND.
- "G" S.W. CORNER ELIJAH T. ESTES D.L.C. NO. 37
 FD. 1" IRON PIPE SET BY A.R. EVANS IN 1951.
 10" W. FIR, S11°E, 33.0' TO "W" NAIL (SCRIBE VIS.), 1996 B.T.
 16" FIR, S54°W, 19.4' TO "W" NAIL (SCRIBE VIS.), 1996 B.T.
 18" HEMLOCK, S84°E, 29.0' TO "W" NAIL (SCRIBE VIS.), 1996 B.T.
 32" FIR, S29°E, 35.5' TO "W" NAIL (SCRIBE VIS.), 1996 B.T.



MONUMENTS SET THIS SURVEY

- "W" SOUTH 1/16 CORNER TO SECTIONS 35 AND 36
 SET 5/8" x 30" IRON PIN WITH YELLOW PLASTIC CAP
 4" FIR, N85°E, 20.7' (SCRIBED/METAL WASHER/PAINTED RED)
 4" FIR, S05°E, 6.4' (SCRIBED/METAL WASHER/PAINTED RED)
- "X" PROPERTY CORNER - SOUTH LINE D.L.C. NO. 37
 SET 5/8" x 30" IRON PIN WITH YELLOW PLASTIC CAP
 16" ALDER, S03°E, 9.8' (BARK SCRIBED/METAL WASHER/PAINTED RED)
 18" ALDER, N66°E, 26.2' (BARK SCRIBED/METAL WASHER/PAINTED RED)
- "Y" PROPERTY CORNER - SOUTH LINE D.L.C. NO. 37
 SET 5/8" x 30" IRON PIN WITH YELLOW PLASTIC CAP
 6" ALDER, S50°W, 32.3' (SCRIBED/METAL WASHER/PAINTED RED)
 12" FIR, NORTH, 18.4' (SCRIBED/METAL WASHER/PAINTED RED)
- "Z" PROPERTY CORNER - SOUTH LINE SECTION 35
 SET 5/8" x 30" IRON PIN WITH YELLOW PLASTIC CAP
 14" FIR, S32°W, 9.2' (SCRIBED/METAL WASHER/PAINTED RED)
 16" FIR, N24°W, 20.1' (SCRIBED/METAL WASHER/PAINTED RED)

MAP FILE M 128-1

MAP FILE M 128-1