

**COUNTY SURVEYORS FILE DATA**  
**DO NOT REMOVE FROM OFFICE**

FILED

Date: 12-29-97 By: JP

This survey consists of:

Map: M 127-80

Narrative: \_\_\_\_\_

Corner Rpt: \_\_\_\_\_

**DOUGLAS COUNTY**  
**SURVEYOR**

**BOUNDARY SURVEY**

FOR

**JOHN MOFFITT**

IN

**1/2 SECTION 12, T23S, R4W, W.M.**

**DOUGLAS COUNTY, OREGON**

BY

**ROBERTS SURVEYING INC.**

**P.O. BOX 7155**

**EUGENE, OREGON 97401**

**PHONE 345-1112**

"A" S.W. CORNER SECTION 12  
 FD. 1971 B.L.M. IRON PIPE AND BRASS CAP  
 20" CEDAR STP., S09°E, 89.0' (SCAR VIS.), 1963 B.T.  
 20" FIR, S58°W, 57.8' (SCAR VIS.), 1963 B.T.  
 22" FIR, N24°W, 75.2' (BARK SCRIBE), 1963 B.T.  
 6" FIR SNAG, N68°E, 12.0' (SCAR VIS.), 1971 B.T.  
 10" FIR, N47°W, 9.6' (SCAR VIS.), 1971 B.T.

"B" SOUTH 1/16 CORNER SECTIONS 11 AND 12  
 FD. HAINES "T" IRON AS PER SURVEY M26-80.  
 18" W. FIR STP., N74°E, 3.3' (NO MARKS), 1963 B.T.

"C" CENTER 1/4 CORNER SECTION 12  
 FD. HAINES "T" IRON AS PER SURVEY M26-80  
 20" DOWNED FIR, N69°W, 17.5' (SCAR VIS.), 1963 B.T.  
 SET 4" FIR, N14°W, 21.0' (SCRIBED/METAL WASHER/PAINTED RED)  
 5" FIR, N42°E, 13.7' (SCRIBED/METAL WASHER/PAINTED RED)

"D" S.E. 1/16 CORNER SECTION 12  
 FD. HAINES "T" IRON AS PER SURVEY M26-80  
 12" FIR, S35°E, 4.0' (SCRIBE VIS.), CS 63/149-5 B.T.  
 12" FIR, N34°W, 8.4' (SCRIBE VIS.), CS 63/149-5 B.T.

"E" EAST 1/16 CORNER SECTIONS 12 AND 13  
 FD. HAINES "T" IRON AS PER SURVEY M26-80  
 14" FIR, S88°W, 22.4' (SCRIBE VIS.), CS 63/149-5 B.T.  
 20" HEM., N78°E, 25.8' (SCRIBE VIS.), CS 63/149-5 B.T.

"F" SOUTH 1/4 CORNER SECTION 12  
 FD. 1-1/2" IRON PIPE AS PER SURVEY M26-80  
 26" CEDAR STP., N25°W, 47.4' (SCAR VIS.), 1963 B.T.  
 26" FIR STP., S11°E, 62.0' (NO MARKS), 1963 B.T.  
 20" FIR, S62°W, 38.5' (SCAR VIS.), 1965 B.T.

"Z" C.S. 1/16 CORNER SECTION 12  
 SET 5/8" x 30" IRON PIN WITH YELLOW PLASTIC CAP  
 12" W. FIR, S85°W, 12.6' (SCRIBED/METAL WASHER/PAINTED RED)  
 14" FIR, N15°W, 1.5' (SCRIBED/METAL WASHER/PAINTED RED)



SCALE 1" = 500'  
 DECEMBER 12, 1997

LEGEND,

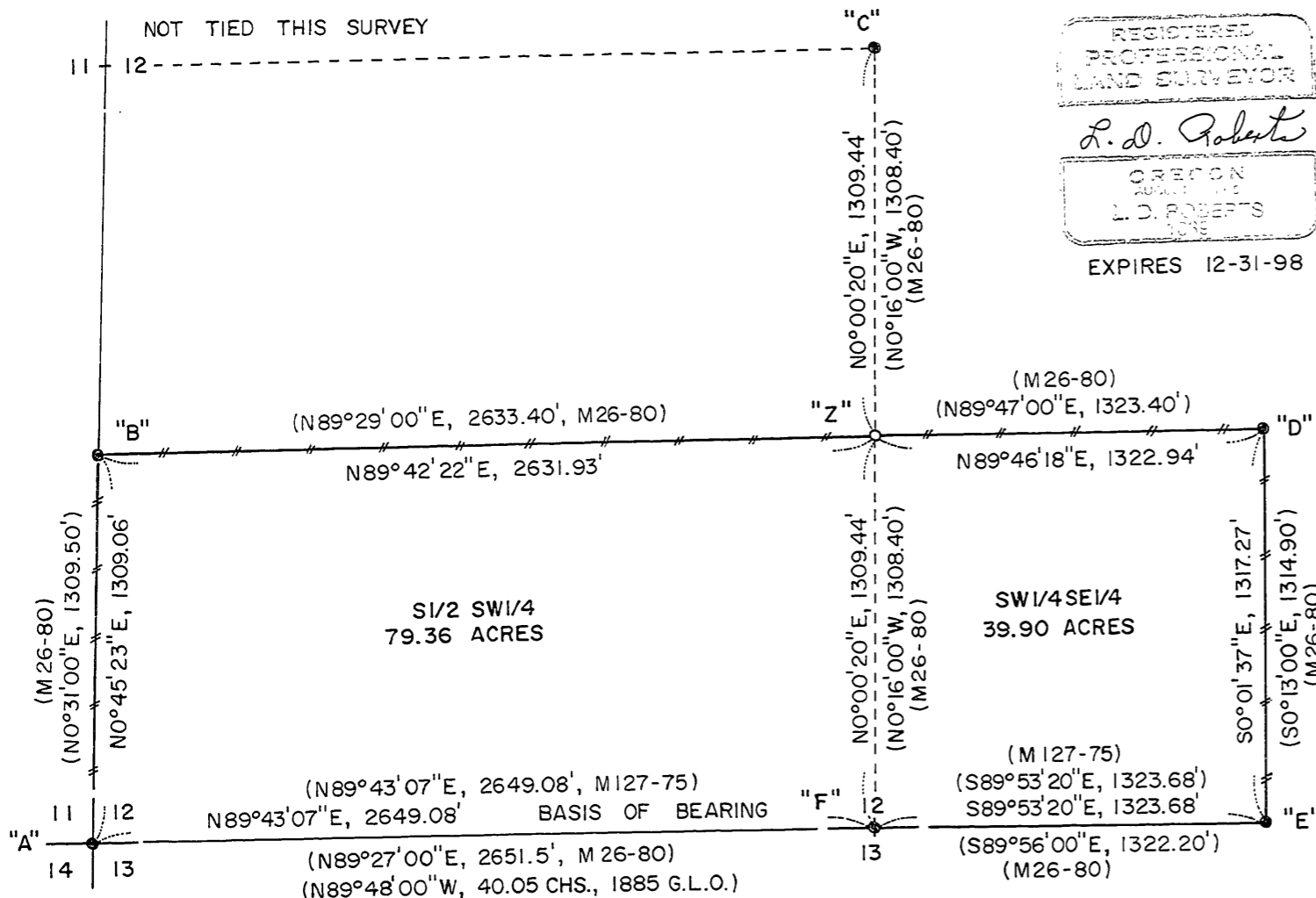
- MONUMENTS FOUND AND USED FOR CONTROL
- MONUMENTS SET - 5/8" x 30" IRON PINS WITH YELLOW PLASTIC CAPS. CAPS STAMPED ROBERTS SURVEYING INC.
- ( ) DATA OF RECORD - G.L.O. SURVEY BY GORDON AND GARDNER IN 1855. SURVEY M26-80 BY WILFORD HAINES IN 1963. SURVEY M127-75 BY LES ROBERTS IN 1997.
- //— LINES MARKED WITH RED PAINTED BLAZES AND RED PLASTIC RIBBON.
- BASIS OF BEARING - LINE "A-F" FROM SURVEY M127-75
- DISTANCES TO BEARING TREES ARE CENTER MEASURE
- ALL NEW BEARING TREES ARE SCRIBED AND HAVE A METAL WASHER STAMPED P.L.S. 1039 NAILED TO LOWER BLAZE. LOWER BLAZES ARE PAINTED RED.

REGISTERED  
 PROFESSIONAL  
 LAND SURVEYOR

*L. D. Roberts*

OREGON  
 L. D. ROBERTS  
 1997

EXPIRES 12-31-98



NARRATIVE, THE PURPOSE OF THIS SURVEY IS TO BLAZE AND PAINT THE FOLLOWING LINES. 1) THE WEST AND NORTH BOUNDARIES OF THE 1/2 OF THE S.W. 1/4 OF SECTION 12. 2) THE NORTH AND EAST BOUNDARIES OF THE SW1/4SE1/4 OF SECTION 12. ALSO THE C.S. 1/16 CORNER WAS SET IN THIS SURVEY. THE S.W. CORNER OF SECTION 12, THE SOUTH 1/16 CORNER TO SECTIONS 11 AND 12, THE CENTER 1/4 CORNER, THE S.E. 1/16 CORNER, THE EAST 1/16 CORNER TO SECTIONS 12 AND 13 AND THE SOUTH 1/4 CORNER WERE FOUND IN THE FIELD AND USED AS CONTROL FOR THIS SURVEY. A SERIES OF CLOSED RANDOM E.D.M. CONTROL TRAVERSES, USING A WILD T-16 THEODOLITE AND A DI-4L E.D.M., WERE RUN BETWEEN THE CONTROLLING CORNERS FOUND IN THE FIELD. THE C.S. 1/16 CORNER, MONUMENT "Z", WAS SET AT THE MID-POINT OF LINE "C-F". A CLOSED RANDOM PROPERTY LINE TRAVERSE, USING A WILD T-16 THEODOLITE AND A DI-4L E.D.M., WAS RUN ALONG ALL PROPERTY LINES TO BE BLAZED AND POSTED. OFFSETS WERE COMPUTED FROM THIS PROPERTY LINE TRAVERSE TO THE TRUE PROPERTY LINES. PROPERTY LINES WERE MARKED WITH RED PAINTED BLAZES AND RED PLASTIC RIBBON.

MAP FILE M 127-80

MAP FILE M 127-80