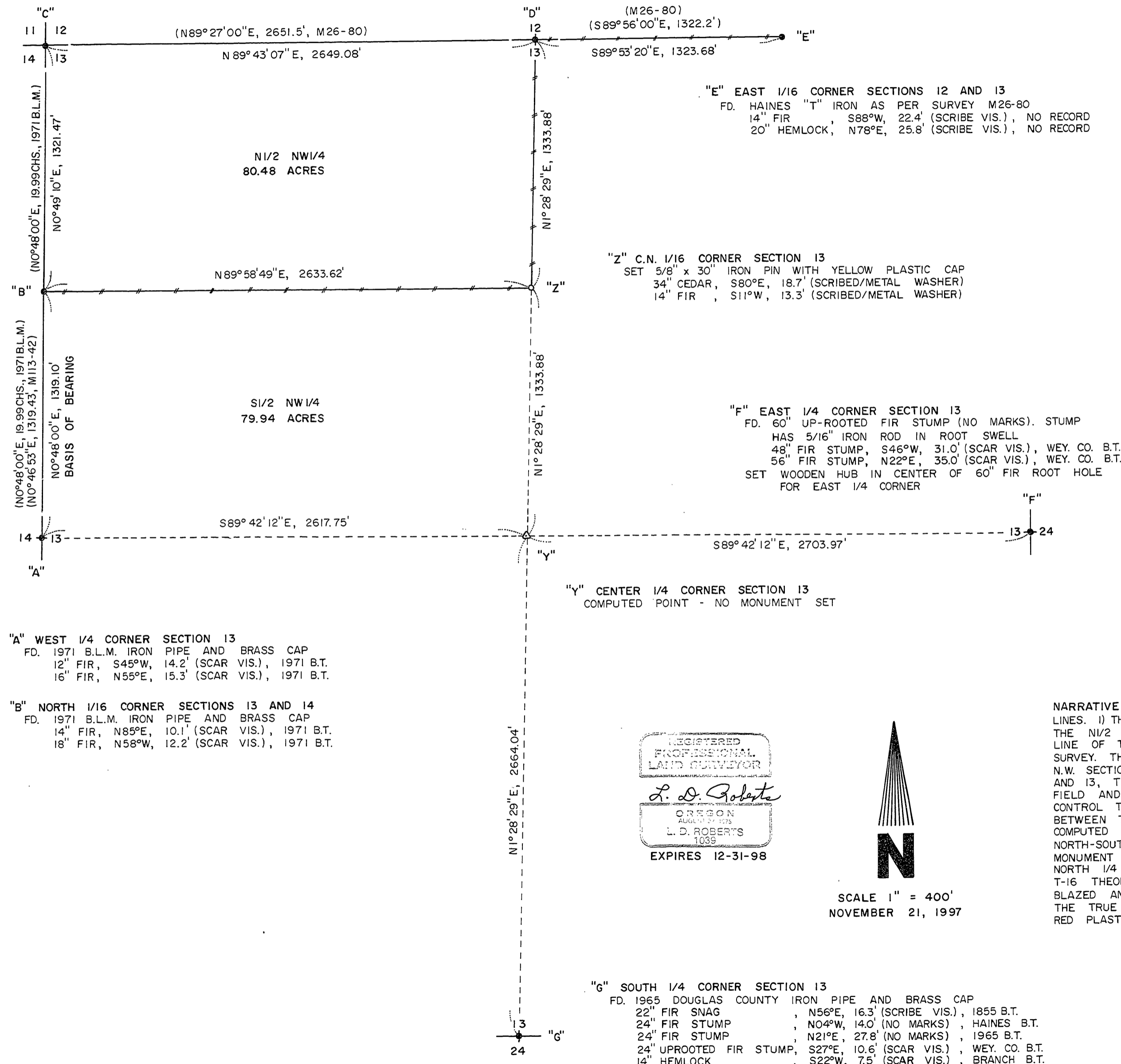


"C" N.W. CORNER SECTION 13
FD. 1971 B.L.M. IRON PIPE AND BRASS CAP
20" CEDAR STUMP, S09°E, 89.0' (SCAR VIS.), 1963 B.T.
20" FIR, S58°W, 57.8' (SCAR VIS.), 1963 B.T.
22" FIR, N24°W, 75.2' (BARK SCRIBE), 1963 B.T.
6" FIR SNAG, N68°E, 12.0' (SCAR VIS.), 1971 B.T.
10" FIR, N47°W, 9.6' (SCAR VIS.), 1971 B.T.

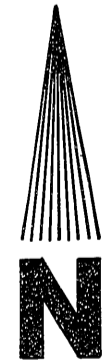
"D" NORTH 1/4 CORNER SECTION 13
FD. 1-1/2" IRON PIPE AS PER SURVEY M26-80
26" CEDAR STUMP, N25°W, 47.4' (SCAR VIS.), 1963 B.T.
26" FIR STUMP, S11°E, 62.0' (NO MARKS), 1963 B.T.
20" FIR, S62°W, 38.5' (SCAR VIS.), 1965 B.T.



BOUNDARY SURVEY
FOR
JOHN MOFFITT
IN
SECTION 13, T23S, R4W, W.M.
DOUGLAS COUNTY, OREGON
BY
ROBERTS SURVEYING INC.
P.O. BOX 7155
EUGENE, OREGON 97401
PHONE 345-1112

LEGEND,
● MONUMENTS FOUND AND USED FOR CONTROL
△ COMPUTED POINT - NO MONUMENT SET
○ MONUMENTS SET - 5/8" x 30" IRON PINS WITH YELLOW PLASTIC CAPS. CAPS STAMPED ROBERTS SURVEYING INC.
() DATA OF RECORD - SURVEY M26-80 BY WILFORD HAINES IN 1963. B.L.M. CADASTRAL SURVEY IN 1971. SURVEY M113-42 BY DONALD PEEL IN 1991
---//--- LINES MARKED WITH RED PAINTED BLAZES AND RED PLASTIC RIBBON
BASIS OF BEARING - LINE "A-B" FROM 1971 B.L.M. SURVEY
DISTANCES TO BEARING TREES ARE CENTER MEASURE
ALL NEW BEARING TREES ARE SCRIBED AND HAVE A METAL WASHER STAMPED P.L.S. 1039 NAILED TO LOWER BLAZE. LOWER BLAZES ARE PAINTED RED.

REGISTERED PROFESSIONAL LAND SURVEYOR
L. D. Roberts
OREGON AUGUST 1975
L. D. ROBERTS 1039
EXPIRES 12-31-98



SCALE 1" = 400'
NOVEMBER 21, 1997

NARRATIVE, THE PURPOSE OF THIS SURVEY IS TO BLAZE AND PAINT THE FOLLOWING LINES. 1) THE W/2 OF THE E/2 OF THE NORTH LINE OF SECTION 13. 2) THE N/2 OF THE N/2 OF THE NORTH-SOUTH CENTERLINE OF SECTION 13. 3) THE EAST-WEST CENTERLINE OF THE NW/4 OF SECTION 13. ALSO THE C.N. 1/16 CORNER WAS SET IN THIS SURVEY. THE WEST 1/4 CORNER, THE NORTH 1/16 CORNER TO SECTIONS 12 AND 13, THE N.W. SECTION CORNER, THE NORTH 1/4 CORNER, THE EAST 1/16 CORNER TO SECTIONS 12 AND 13, THE EAST 1/4 CORNER AND THE SOUTH 1/4 CORNER WERE FOUND IN THE FIELD AND USED AS CONTROL FOR THIS SURVEY. A SERIES OF CLOSED RANDOM E.D.M. CONTROL TRAVERSES, USING A WILD T-16 THEODOLITE AND A DI-4L E.D.M., WERE RUN BETWEEN THE CONTROLLING CORNERS FOUND IN THE FIELD. THE CENTER 1/4 CORNER, COMPUTED POINT "Y", WAS ESTABLISHED AT THE POINT OF INTERSECTION OF THE NORTH-SOUTH AND EAST-WEST CENTERLINES OF SAID SECTION 13. THE C.N. 1/16 CORNER, MONUMENT "Z", WAS SET HALFWAY BETWEEN COMPUTED POINT "Y" AND THE FOUND NORTH 1/4 CORNER "D". A CLOSED RANDOM PROPERTY LINE TRAVERSE, USING A WILD T-16 THEODOLITE AND A DI-4L E.D.M., WAS RAN ALONG ALL PROPERTY LINES TO BE BLAZED AND POSTED. OFFSETS WERE COMPUTED FROM THIS PROPERTY LINE TRAVERSE TO THE TRUE PROPERTY LINES. PROPERTY LINES WERE MARKED WITH RED PAINTED BLAZES AND RED PLASTIC RIBBON.