

FILED

Date: 11-14-97 By: JP  
This survey consists of:  
Map: M 127-67  
Narrative:  
Corner Rpt:

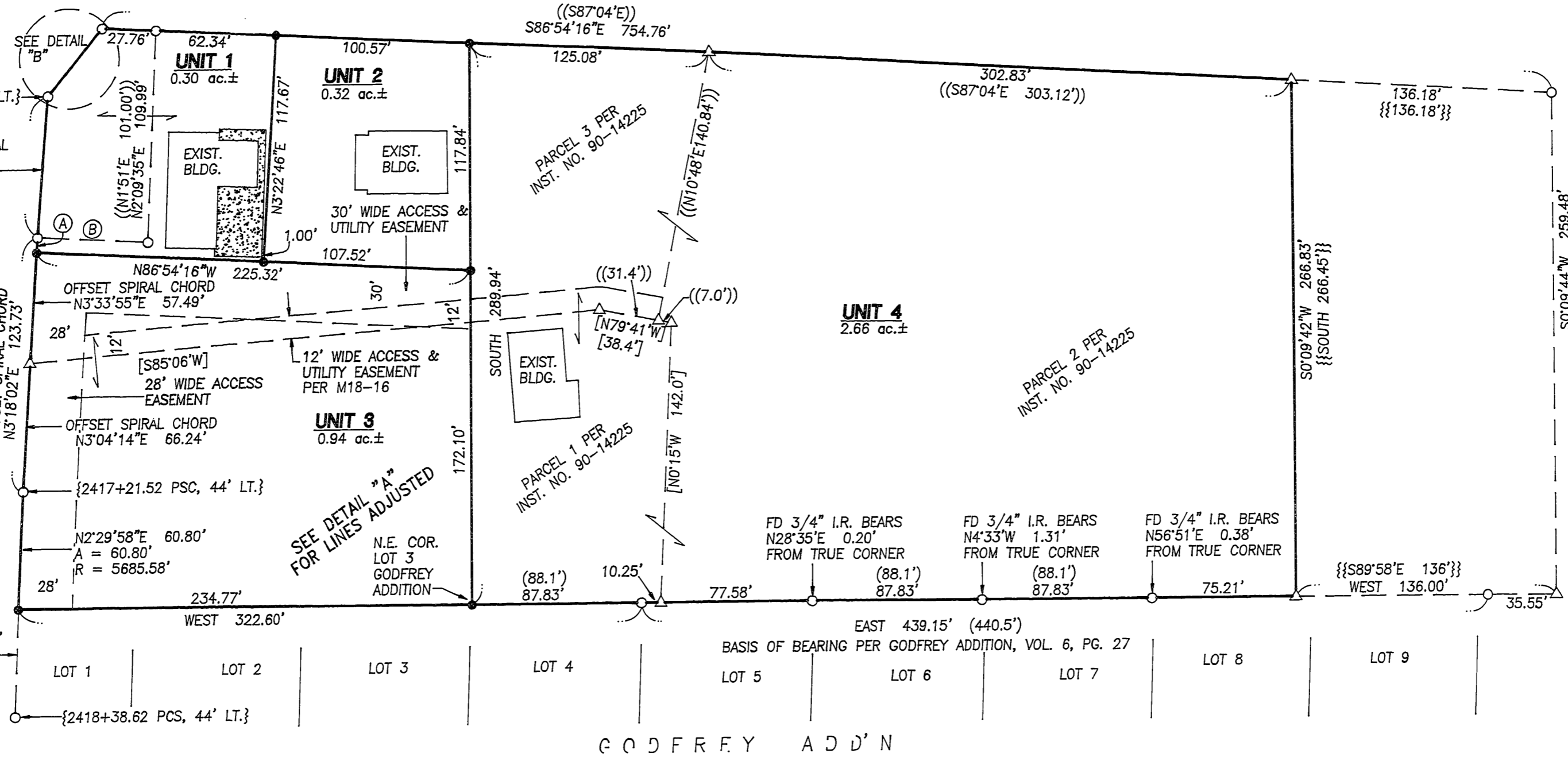
DOUGLAS COUNTY  
SURVEYOR

MAP FILE M 127-67

#	BEARING-DIST.
A	N3°19'54"E 7.82' OFFSET SPIRAL CHORD
B	N86°55'W 57.74' ((S87°04'E))

STEPHENS STREET  
STATE HIGHWAY NO. 99  
R/W VARIES

N1°54'49"E 55.48'  
A = 55.48'  
R = 5685.58'



**RECORD DATA**

( )	GODFREY ADDITION VOL. 6, PG. 27
[ ]	M18-16
{ }	O.D.O.T HIGHWAY PLAN NO. 9B36-10
(( ))	INST. NO. 90-14225
[ [ ] ]	INST. NO. 97-04010
{ { }	INST. NO. 91-12307

- LEGEND:**
- SET 5/8" x 30" IRON ROD w/ CAP MKD "I.E. ENG."
  - FD 5/8" IRON ROD UNLESS OTHERWISE NOTED
  - △ CALCULATED POINT

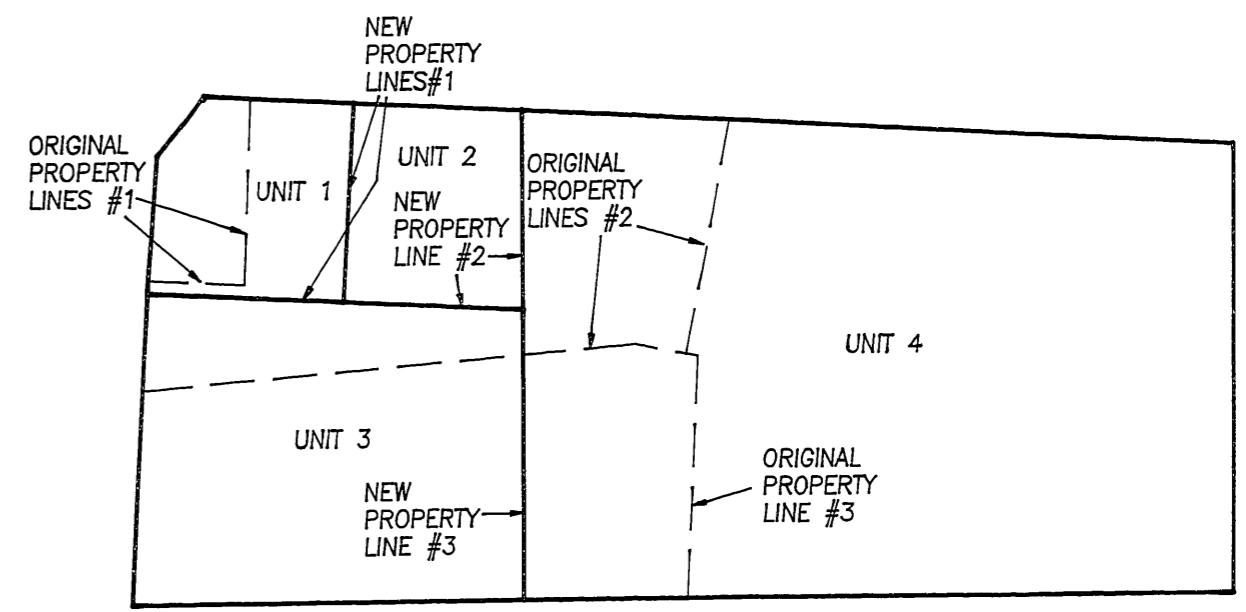
**APPROVAL:**

*[Signature]*  
COMMUNITY DEVELOPMENT DIRECTOR  
CITY FILE NO.: BLA-97-4  
DATE: 11-14-97

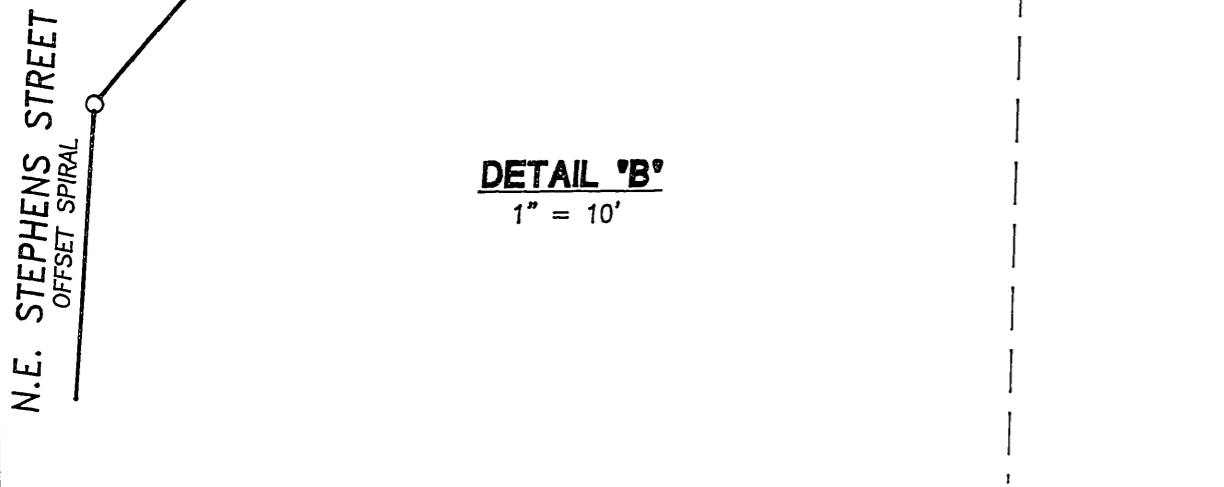
**NARRATIVE:**

THE PURPOSE OF THIS SURVEY IS TO ADJUST THE EXISTING LINES OF INSTRUMENT NO. 90-14225 AND 97-04010 AS SHOWN HEREON. THE FOUND MONUMENTS AT THE NORTHWEST CORNER OF LOT 5 AND THE NORTHEAST CORNER OF LOT 9 OF GODFREY ADDITION WERE USED AS THE BASIS OF BEARING PER SAID PLAT. THE NORTHEAST CORNER OF UNIT 4 (ALSO THE NORTHWEST CORNER OF PARCEL 1 OF INSTRUMENT NO. 91-12307) WAS COMPUTED BY HOLDING THE FOUND MONUMENTS AT THE NORTHWEST CORNER OF INSTRUMENT NO. 97-04010 AND AT THE NORTHEAST CORNER OF INSTRUMENT NO. 91-12307 FOR LINE, THEN TRaversing ALONG THE LINE THE RECORD DISTANCE FROM SAID NORTHEAST CORNER OF INSTRUMENT NO. 91-12307 THE RECORD DISTANCE. THE SOUTHWEST CORNER OF UNIT 4 (ALSO THE SOUTHWEST CORNER OF PARCEL 1 OF INSTRUMENT NO. 91-12307) WAS COMPUTED BY FIRST CALCULATING THE SOUTHWEST CORNER OF INSTRUMENT NO. 91-12307 BY INTERSECTING THE EAST LINE OF SAID PARCEL 1 OF INSTRUMENT NO. 91-12307 (BY TURNING A RECORD ANGLE FROM SAID NORTHEAST CORNER OF INSTRUMENT NO. 91-12307, FROM THE PREVIOUSLY COMPUTED NORTH LINE, PER SAID INSTRUMENT NO. 91-12307) WITH THE NORTH LINE OF GODFREY ADDITION (AS DETERMINED BY THE BASIS OF BEARING LINE), THEN TRaversing FROM SAID SOUTHWEST CORNER OF INSTRUMENT NO. 91-12307 ALONG THE NORTH LINE OF GODFREY ADDITION THE RECORD DISTANCE PER SAID INSTRUMENT NO. 91-12307. THE SOUTHWEST CORNER OF UNIT 3 WAS COMPUTED BY INTERSECTING THE EASTERLY RIGHT-OF-WAY OF HIGHWAY 99 (DETERMINED BY FOUND MONUMENTS AND HIGHWAY MAP NO. 9B-36-10) WITH THE ABOVE SAID NORTH LINE OF GODFREY ADDITION. THE 70-FOOT OFFSET LEFT AT STATION 2414+80 (PER THE ABOVE SAID HIGHWAY MAP) WAS COMPUTED BY TURNING A RECORD ANGLE FROM THE FOUND MONUMENT AT THE NORTHWEST CORNER, FROM THE ABOVE COMPUTED NORTH LINE OF THE PROJECT, AND TRaversing THE RECORD DISTANCE PER SAID INSTRUMENT NO. 97-04010.

FIELD CREW: SAM COREY, RYAN PALMER  
EQUIPMENT: NIKON TOTAL STATION  
CALCULATIONS: WENDELL T. HARNISS  
DRAFTING: TIM ADAMS



**DETAIL 'A'**  
ADJUSTED LINES  
1" = 100'



**DETAIL 'B'**  
1" = 10'

<p><b>REGISTERED PROFESSIONAL LAND SURVEYOR</b></p> <p><i>[Signature]</i></p> <p>OREGON JULY 12, 1988 <b>DONALD A. BENTZ</b> 839</p> <p>EXPIRES: 12/31/97</p>	<p><b>BOUNDARY LINE ADJUSTMENT</b></p> <p>IN THE NE1/4 OF THE SE1/4 OF SEC. 1, T27S, R6W, W.M., DOUGLAS COUNTY, OREGON</p>	
	<p>SURVEYED FOR:</p> <p>PENROSE PROPERTIES LLC 3329 N.E. STEPHENS ROSEBURG, OREGON 97470</p>	<p>SURVEYED BY:</p> <p><b>i.e.</b> ENGINEERING</p> <p>741 S.E. Jackson Street Roseburg, Oregon 97470 PHONE (541) 673-0166 FAX (541) 440-9392</p>
SCALE: 1" = 50'	DATE: NOV. 1997	JOB NO. 1399-02 PAGE: 1 OF 1

MAP FILE M 127-67