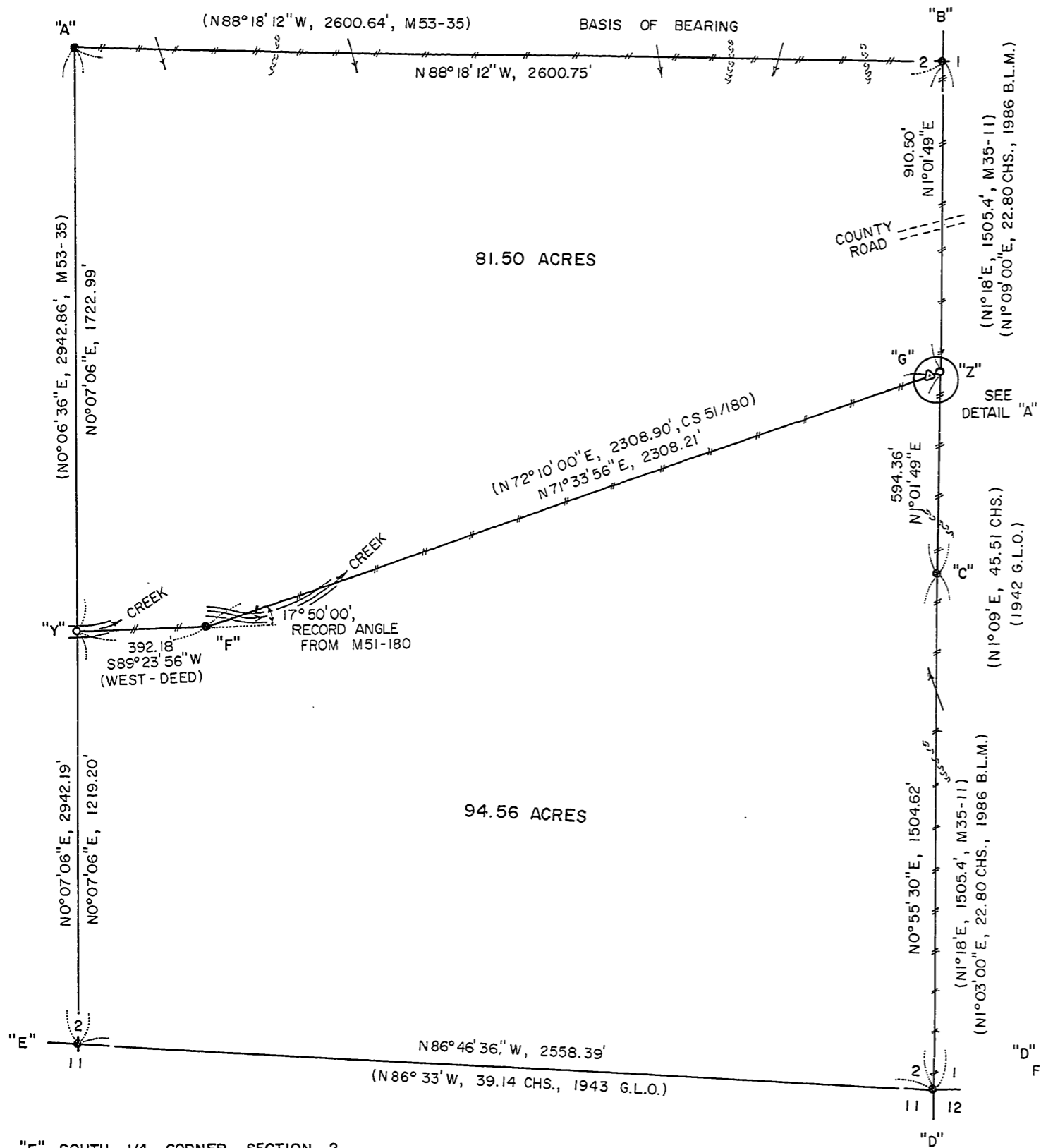


FILED  
 Date: 9-3-97 By: PR  
 This survey consists of:  
 Map: M. 127-43  
 Name: \_\_\_\_\_  
 County: \_\_\_\_\_  
 X DOUGLAS COUNTY SURVEYOR

"A" CENTER 1/4 CORNER SECTION 2  
 FD. 5/8" IRON PIN SET BY WILLIAM EIMSTAD  
 IN SURVEY M53-35 (1974)  
 10" FIR STUMP, N02°W, 43.6' (SCAR VIS.), 1974 B.T.  
 24" FIR , S72°E, 45.5' (SCAR VIS.), 1974 B.T.

"B" EAST 1/4 CORNER SECTION 2  
 FD. 1943 G.L.O. IRON PIPE AND BRASS CAP  
 12" W. FIR , S18°E, 17.0' (SCAR VIS.), 1986 B.T.  
 26" CEDAR , N80°W, 3.5' (SCAR VIS.), 1943 B.T.

LEGEND,  
 ● MONUMENTS FOUND AND USED FOR CONTROL  
 △ COMPUTED POINT - NO MONUMENT SET  
 ○ MONUMENTS SET, 5/8" x 30" IRON PINS WITH YELLOW PLASTIC CAPS. CAPS STAMPED ROBERTS SURVEYING INC.  
 --- LINES BLAZED, PAINTED AND MARKED WITH GREEN METAL FENCE POSTS.  
 BASIS OF BEARING - EAST 1/2 OF EAST-WEST SECTION 2 FROM SURVEY M53-35.  
 DISTANCES TO BEARING TREES ARE CENTER MEASURE  
 ALL NEW BEARING TREES ARE SCRIBED.  
 ( ) DATA OF RECORD - SURVEY CS 51/180 BY WILLIAM WILT IN 1960. SURVEY M53-35 BY WILLIAM EIMSTAD IN 1974. 1943 G.L.O. SURVEY BY OTIS GOULD, JOSEPH GAWRON AND ORVILLE EGGEN. 1986 B.L.M. SURVEY BY WAYNE L. ROGERS. SURVEY M35-11 BY WILFORD N. HAINES IN 1967.  
 ← CREEK OR DRAW      ~~~~ RIDGE



"E" SOUTH 1/4 CORNER SECTION 2  
 FD. 1943 G.L.O. IRON PIPE AND BRASS CAP  
 6" HEMLOCK, N37°W, 34.3' (SCRIBE VIS.), NO RECORD  
 6" HEMLOCK, S59°W, 37.6' (SCRIBE VIS.), NO RECORD

"F" INTERIOR PROPERTY CORNER  
 FD. 1" ALUMINUM PIPE SET BY WILLIAM WILT  
 IN SURVEY C.S. 51/180 (1960)  
 24" FIR, S62°W, 21.5' (SCAR VIS.), 1960 B.T.

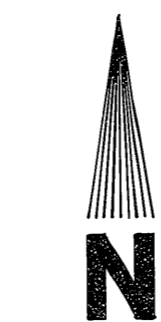
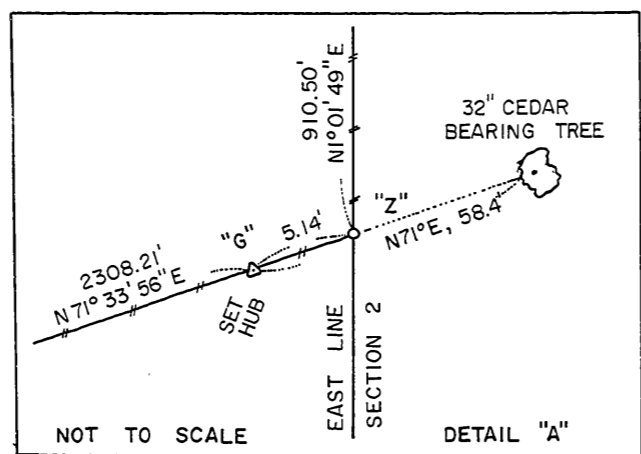
"G" INTERIOR PROPERTY CORNER  
 FD. 32" RED CEDAR BEARING TREE (SCAR VIS.)  
 AS SET BY WILLIAM WILT IN SURVEY  
 C.S. 51/180 (1960). DID NOT FIND ALUMINUM  
 PIPE. SET TEMPORARY CORNER S71°W, 58.4'  
 FROM FOUND CEDAR BEARING TREE

"C" SOUTH 1/16 CORNER SECTIONS 1 AND 2  
 FD. 1986 B.L.M. IRON PIPE AND BRASS CAP  
 10" FIR, S18°E, 24.5' (SCAR VIS.), 1967 B.T.  
 10" FIR, S62°W, 16.2' (SCAR VIS.), 1967 B.T.

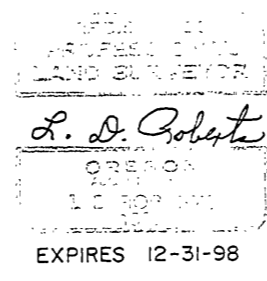
"D" S.E. CORNER SECTION 2  
 FD. 1942 G.L.O. IRON PIPE AND BRASS CAP  
 38" FIR STUMP, N23°E, 30.5' (SCAR VIS.), 1943 B.T.  
 48" FIR , N28°W, 65.0' (SCAR VIS.), 1943 B.T.  
 18" FIR , S60°E, 13.2' (SCAR VIS.), 1986 B.T.  
 12" FIR , S63°W, 7.3' (SCRIBE VIS.), B.L.M. B.T.

"Y" PROPERTY CORNER ON NORTH-SOUTH SECTION 2  
 CORNER FALLS IN ANDREWS CREEK. SET 5/8" x 30"  
 IRON PIN FOR WITNESS CORNER. WITNESS CORNER  
 BEARS S0°07'06"W, 25.00' FROM TRUE CORNER.  
 SET 12" ALDER, S18°W, 9.9' (BARK SCRIBED) W.C.B.T.

"Z" PROPERTY CORNER ON EAST LINE SECTION 2  
 SET 5/8" x 30" IRON PIN WITH YELLOW PLASTIC CAP  
 14" MAPLE, S79°E, 21.0' (SCRIBED/PAINTED RED)



AUGUST 16, 1997  
 SCALE 1" = 300'



BOUNDARY SURVEY  
 FOR  
 WILLAMETTE INDUSTRIES INC.  
 AND  
 McARTHUR AND ASSOCIATES INC.  
 IN  
 SE1/4 SECTION 2, T23S, R6W, W.M.  
 DOUGLAS COUNTY, OREGON  
 BY  
 ROBERTS SURVEYING INC.  
 P.O. BOX 7155  
 EUGENE, OREGON 97401  
 PHONE 345-1112

NARRATIVE, THE PURPOSE OF THIS SURVEY IS TO BLAZE AND POST THE NORTH AND EAST LINES OF THE SE1/4 OF SECTION 2. ALSO INTERIOR PROPERTY LINE "Y-F-Z" WAS BLAZED AND POSTED IN THIS SURVEY. THE NORTH 1/4 CORNER, THE EAST 1/4 CORNER, THE SOUTH 1/16 CORNER, THE S.E. SECTION CORNER AND THE SOUTH 1/4 CORNER WERE FOUND IN THE FIELD AND USED AS CONTROL FOR THIS SURVEY. INTERIOR PROPERTY CORNERS "F" AND "G" WERE ALSO FOUND AS SET BY WILLIAM WILT IN SURVEY CS 51/180. A CLOSED RANDOM CONTROL TRAVERSE, USING A WILD T-16 THEODOLITE AND A DI-4L E.D.M., WAS RUN BETWEEN ALL OF THE CONTROLLING CORNERS FOUND IN THE FIELD. A CLOSED RANDOM PROPERTY LINE TRAVERSE, USING A WILD T-16 THEODOLITE AND A DI-4L E.D.M., WAS RUN ALONG ALL PROPERTY LINES TO BE BLAZED AND POSTED. OFFSETS WERE COMPUTED FROM THIS RANDOM PROPERTY LINE TRAVERSE TO THE TRUE PROPERTY LINE. PROPERTY LINES WERE MARKED WITH RED PAINTED BLAZES, RED PLASTIC RIBBON AND GREEN METAL FENCE POSTS. PROPERTY CORNER "Y" WAS SET BY INTERSECTION AS FOLLOWS. FROM FOUND MONUMENT "F", A LINE WAS RUN S89°23'56"W (COMPUTED BEARING USING RECORD ANGLE OF 17°50'00") TO IT'S INTERSECTION WITH LINE "A-E" AT POINT "Y". THUS THE INVERSE BEARINGS AND DISTANCES OF N0°07'06"E, 1219.20 FEET FOR LINE "E-Y" AND S89°23'56"W, 392.18 FEET FOR LINE "F-Y". INTERIOR PROPERTY CORNER "G" WAS ESTABLISHED BY SETTING A WOODEN HUB S71°W, 58.4 FEET FROM THE FOUND 32" CEDAR BEARING TREE SET IN SURVEY CS 51/180. SEE DETAIL "A". INTERIOR PROPERTY CORNER "G", AS SET IN SURVEY CS 51/180, FALLS APPROXIMATE-5' WEST OF THE EAST LINE OF SECTION 2. PROPERTY CORNER "Z" WAS SET BY INTERSECTION AS FOLLOWS. LINE "F-G" WAS EXTENDED N71°33'56"E TO IT'S INTERSECTION WITH LINE "B-C" AT POINT "Z". THUS THE INVERSE BEARINGS AND DISTANCES OF N71°33'56"E, 5.14 FEET FOR LINE "G-Z" AND N1°01'49"E, 594.36 FEET FOR LINE "C-G".

MAP FILE M 127-43

MAP FILE M 127-43

COUNTY SURVEYORS FILE DATA  
 DO NOT REMOVE FROM OFFICE