

GEOGRAPHIC COORDINATES
 NAD 83-91 DATUM
 INTERNATIONAL FEET
 OREGON SOUTH ZONE
 AVE. ELEV. - 424 FT.
 SCALE FACTOR - .999951473

CORNER NOTES

N - 791833.045
 E - 3967079.499

CORNER #1: SET A 5/8" X 3/8" REBAR WITH A 2" ALUM. CAP FROM WHICH: FD. THE REMAINS OF THE ORIGINAL 30" SPRUCE (ONLY FRAGMENTS OF SCRIBING REMAIN) BEARS S55°E, 12.5' FT. SET A 5/8" X 3/8" REBAR WITH A PLASTIC CAP MKD. "LS 2006" IN THE CENTER OF THE STUMP REMAINS: FD. A 2" IRON PIPE BEARS N89°E, 5.7 FT.; I SCRIBED "1/4 S34 BT" ON AN 11" DF BEARS N49°W, 39.6 FT.; I SCRIBED "1/4 S3 BT" ON A 16" HEMLOCK BEARS S37°W, 56.5 FT.; I SET A 5" STEEL FENCE POST N58°E, 14.1 FT.; A 5" STEEL FENCE POST BEARS N25°E, 0.80 FT. THE CORNER FALLS 3 FT. SOUTH FROM TOP OF CUT BANK OF OLD OVERGROWN ROAD.

N - 791740.549
 E - 3969652.062

CORNER #2: REPLACED A RUSTED 2" IRON PIPE WITH A 5/8" X 3/8" REBAR AND A 2" ALUM. CAP FROM WHICH: FD. THE REMAINS OF THE ORIG. 30" SPRUCE (NOW A STUMP) WITH PARTIAL "REVERSE SCRIBES" BEARS N74°E, 38.3 FT. - SET A 5/8" X 3/8" REBAR WITH A PLASTIC CAP MKD. "LS 2006" IN THE CENTER OF STUMP REMAINS: I SCRIBED "T20S R12W S34 BT" ON A 21" HEMLOCK BEARS N25°W, 42.1 FT.; I SCRIBED "T20S R12W S34 BT" ON A 30" SPRUCE BEARS N82°W, 64.3 FT.; I SCRIBED "T21S R12W S3 BT" ON A 25" SPRUCE BEARS S26°W, 31.0 FT. THE CORNER FALLS IN A SWAMP APPROX. 50 FT. EAST FROM THE TOE OF A HILL.

N - 791473.504
 E - 3974797.226

CORNER #3: FD. A 2 1/2" BRASS CAP AT THE CORNER OF SECTIONS 35 AND 36, T.20 S., R.12 W., AND SECTIONS 1 AND 2, T.21 S., R.12 W., FROM WHICH: FD. A 27" DF WITH A HEALED FACE BEARS N21°30'E, 35.0 FT.; FD. A 48" DF STUMP BEARS N78°E, 1.0 FT. TO FACE: FD. A 22" DF WITH A HEALED FACE BEARS S51°15'E, 40.3 FT.; FD. A 21" HEMLOCK WITH A HEALED FACE BEARS S13°W, 40.2 FT.; FD. A 17" SPRUCE WITH A HEALED FACE BEARS N50°30'W, 53.8 FT.

N - 788917.545
 E - 3974670.555

CORNER #4: FD. A 2 1/2" BRASS CAP AT THE 1/4 CORNER BETWEEN SECTIONS 3 AND 2 FROM WHICH: FD. A 27" ALDER WITH VISIBLE BARK SCRIBES BEARS N23°30'E, 69.1 FT.; FD. A 22" ALDER WITH VISIBLE BARK SCRIBES BEARS SOUTH, 20.2 FT.; I SCRIBED "1/4 S2 BT" ON A 17" ALDER BEARS S82°W, 31.5 FT.; I SET A 5" STEEL FENCE POST BEARS N23°W, 9.3 FT.; I SET A 5" STEEL FENCE POST BEARS S49°E, 10.0 FT.

N - 788935.199
 E - 3973411.930

CORNER #5: SET A 5/8" X 3/8" REBAR WITH A 2" ALUM. CAP AT THE CE 1/16 OF SECTION 2 FROM WHICH: I SCRIBED "CE 1/16 BT" ON A 23" DF BEARS N9°W, 5.4 FT.; I SCRIBED "CE 1/16 BT" ON A 16" DF BEARS N58°W, 14.7 FT.

N - 787662.845
 E - 3973363.238

CORNER #6: SET A 5/8" X 3/8" REBAR WITH A 2" ALUM. CAP AT THE SE 1/16 OF SECTION 2 FROM WHICH: I SCRIBED "SE 1/16 BT" ON A 15" SPRUCE BEARS N24°E, 17.3 FT.; I BARK SCRIBED "SE 1/16 BT" ON A 21" ALDER BEARS S55°W, 13.5 FT.

N - 787642.437
 E - 3974607.070

CORNER #7: SET A 5/8" X 3/8" REBAR WITH A 2" ALUM. CAP AT THE SE 1/16 BETWEEN SECTIONS 1 AND 2 FROM WHICH: I SCRIBED "S1/16 S2 BT" ON A 39" HEMLOCK BEARS N59°W, 9.6 FT.; I SCRIBED "S1/16 S1 BT" ON A 13" SPRUCE BEARS S60°E, 16.6 FT.

N - 786367.328
 E - 3974543.585

CORNER #8: FD. A 2 1/2" BRASS CAP AT THE CORNER OF SECTIONS 1, 2, AND 12 FROM WHICH: FD. A 21" SPRUCE WITH A HEALED FACE BEARS N45°E, 26.2 FT.; FD. A 16" DF WITH A HEALED FACE BEARS N85°W, 32.4 FT.; FD. A 17" ALDER WITH BARK SCRIBES BEARS S31°W, 43.8 FT.; FD. THE ORIG. 72" DF (SNAG) BEARS S48°E, 27.7 FT.

N - 786413.683
 E - 3972085.039

CORNER #9: FD. A 2 1/2" BRASS CAP AT THE CORNER OF SECTIONS 2 AND 11 FROM WHICH: FD. A 32" SPRUCE WITH A HEALED FACE BEARS N36°E, 31.3 FT.; FD. A 22" SPRUCE WITH A HEALED FACE BEARS S69°W (RECORD S72°W), 42.5 FT.; I SCRIBED "1/4 S2 BT" ON A 13" SPRUCE BEARS N23°W, 22.0 FT.; I SCRIBED "1/4 S11 BT" ON A 25" SPRUCE BEARS S22°W, 80.9 FT. THE CORNER FALLS APPROX. 100 FT. NORTH OF A RIDGE ROAD.

N - 786436.876
 E - 3970855.737

CORNER #10: SET A 3/8" ALUM. MONUMENT WITH A 3 1/4" ALUM. CAP AT THE W 1/16 BETWEEN SECTIONS 2 AND 11 FROM WHICH: I BARK SCRIBED "W1/16 S11 BT" ON A TRIPLE TOPPED 32" ALDER BEARS S61°E, 18.1 FT.; A 6" STEEL LINE POST BEARS S7°E, 1.5 FT. - THERE ARE NO OTHER SUITABLE TREES AVAILABLE.

N - 786460.068
 E - 3969626.436

CORNER #11: FD. A 2 1/2" BRASS CAP AT THE CORNER OF SECTIONS 2, 3, 10, AND 11 FROM WHICH: FD. THE RECORD 70" SPRUCE STUMP BEARS N21°E, 34.3 FT.; FD. A 21" SPRUCE WITH A HEALED FACE BEARS N15°E, 51.7 FT.; FD. A 13" SPRUCE WITH A HEALED FACE BEARS N9°W, 47.7 FT.; FD. AN 18" SPRUCE WITH A HEALED FACE BEARS S35°W, 69.3 FT.

N - 785162.026
 E - 3969575.650

CORNER #12: SET A 3/8" ALUM. MONUMENT WITH A 3 1/4" ALUM. CAP AT THE NW 1/16 BETWEEN SECTIONS 10 AND 11 FROM WHICH: I SCRIBED "NW 1/16 S11 BT" ON A 14" SPRUCE BEARS N88°E, 36.7 FT.; I BARK SCRIBED "NW 1/16 S11 BT" ON A 13" ALDER BEARS S9°E, 23.6 FT.

N - 785140.880
 E - 3970802.048

CORNER #13: SET A 3/8" ALUM. MONUMENT WITH A 3 1/4" ALUM. CAP AT THE NW 1/16 SECTION 11 FROM WHICH: I SCRIBED "NW 1/16 BT" ON A 26" SPRUCE BEARS N42°W, 18.7 FT.; I SCRIBED "NW 1/16 BT" ON A 15" SPRUCE BEARS S49°E, 11.4 FT.

N - 783864.002
 E - 3969524.864

CORNER #14: FD. A 2 1/2" BRASS CAP AT THE 1/4 CORNER BETWEEN SECTIONS 10 AND 11 FROM WHICH: FD. A 60" DF STUMP WITH A BURNED OUT FACE BEARS S87°W, 10.9 FT. TO THE FACE: FD. A 21" DF WITH A HEALED FACE BEARS N26°W, 14.0 FT.; FD. A 17" DF WITH A HEALED FACE BEARS S9°E, 16.2 FT.; I SCRIBED "1/4 S10 BT" ON A 14" SPRUCE BEARS S67°W, 13.5 FT.; I BARK SCRIBED "1/4 S11 BT" ON A 14" ALDER BEARS N77°E, 18.7 FT.

N - 781200.796
 E - 3969397.679

CORNER #15: FD. A DOUGLAS COUNTY BRASS CAP AT THE CORNER OF SECTIONS 10, 11, 14, AND 15. SEE MY SURVEY M 125 -10 DATED APRIL 3, 1996.

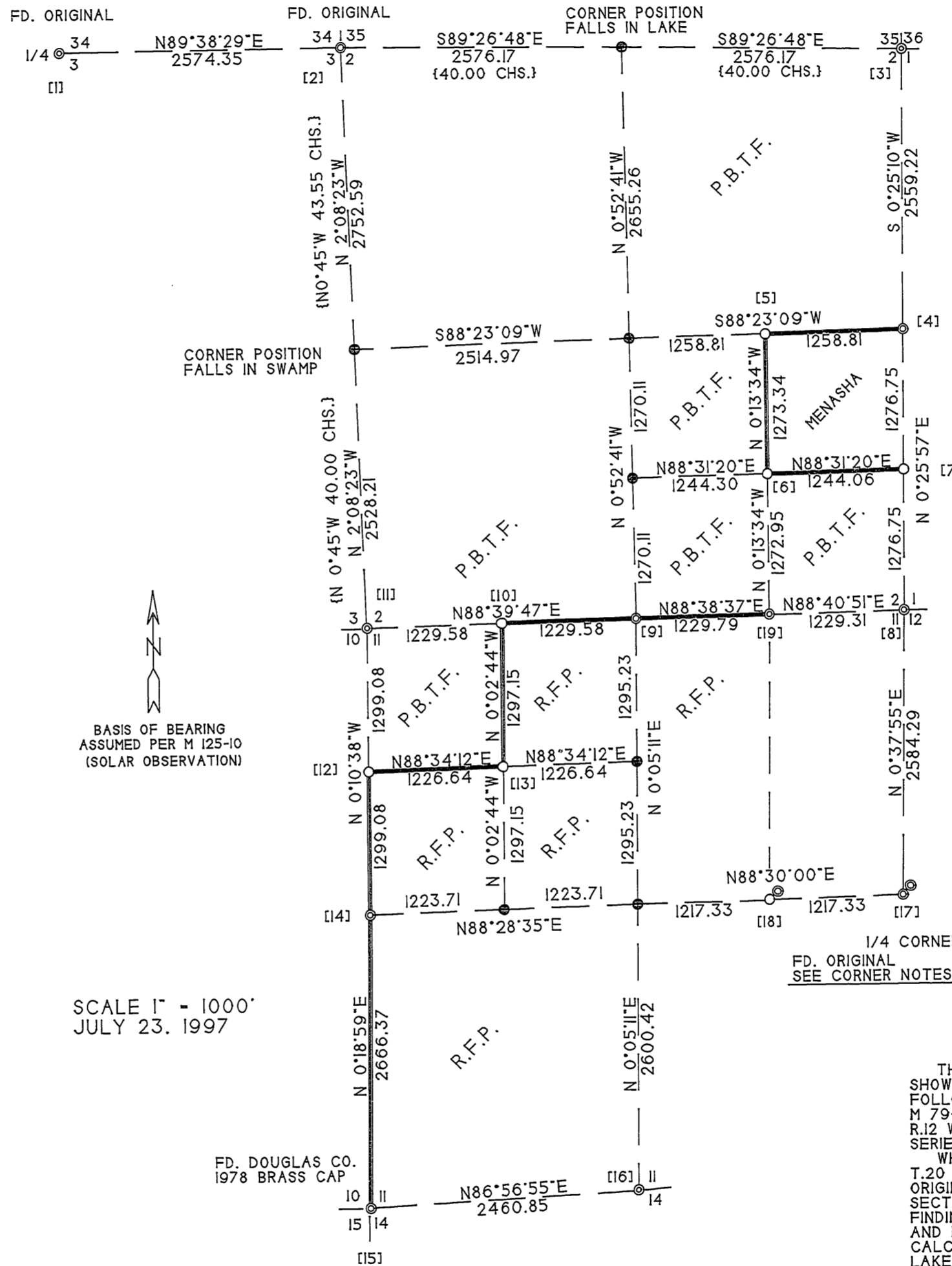
N - 781228.008
 E - 3971858.259

CORNER #16: FD. A 2 1/2" BRASS CAP AT THE 1/4 CORNER BETWEEN SECTIONS 11 AND 14 FROM WHICH: FD. A 33" HEMLOCK WITH A HEALED FACE BEARS N46°W (RECORD N50°W), 32.3 FT.; FD. A 26" DF WITH A HEALED FACE BEARS S7°E (RECORD S8°30'E), 23.4 FT.; I SCRIBED "1/4 S14 BT" ON A 29" DF BEARS S43°E, 21.8 FT.; I SCRIBED "1/4 S14 BT" ON A 21" DF BEARS S77°W, 31.7 FT.

N - 783786.823
 E - 3974406.101

CORNER #17: SET A 5/8" X 3/8" REBAR WITH A 2" ALUM. CAP AS A WITNESS CORNER (TRUE CORNER POSITION BEARS SOUTH 1.0 FT. FROM WHICH: FD. A 34" DF. STUMP - OPENED UP AND FOUND FULL ORIGINAL SCRIBES BEARS N21°E, 44 lks.; FD. A 26" DF WITH PARTIAL ORIGINAL SCRIBES BEARS S68°W, 38 lks.) I SCRIBED "WC BT" ON A 27" DF BEARS N67°W, 24.9 FT.; I SCRIBED "WC BT" ON A 14" DF BEARS S4°E, 1.7 FT.; I SCRIBED "WC BT" ON A 17" DF BEARS S54°E, 19.4 FT.; I SCRIBED "WC BT" ON A 22" DF BEARS N50°E, 17.3 FT.; FD. A 2" BRASS CAP BEARS N46°35'E, 32.34 FT. FROM WITNESS CORNER.

BOUNDARY LINE SURVEY
 LOCATED IN PORTIONS OF SECTIONS 2 AND 11
 T.21S., R.12W., W.M., DOUGLAS CO., OR.



SCALE 1" = 1000'
 JULY 23, 1997

N - 783806.321
 E - 3973188.986

CORNER #18: SET A 5/8" X 3/8" REBAR WITH A 2" ALUM. CAP FROM WHICH: I BARK SCRIBED "CE 1/16 BT" ON A 21" ALDER BEARS N39°W, 25.1 FT.; FD. A 2 1/2" BRASS CAP PER M 79-30 BEARS N35°E, 23.0 FT.; FD. A 70" CEDAR WITH VISIBLE SCRIBES (BT FOR FD. BRASS CAP) BEARS N48°E, 42.5 FT. TO FACE.

N - 786390.904
 E - 3973314.558

CORNER #19: FD. A 2 1/2" BRASS CAP AT THE E 1/16 BETWEEN SECTIONS 2 AND 11 FROM WHICH: FD. A 15" DF WITH A HEALED FACE BEARS S45°45'W, 6.6 FT.; FD. 15" SPRUCE WITH A HEALED FACE BEARS N18°W, 2.8 FT.

FILED
 Date: 8-21-97 By: JP
 This survey consists of:
 Map: M 127 - 39
 Narrative:
 Corner Rpt:

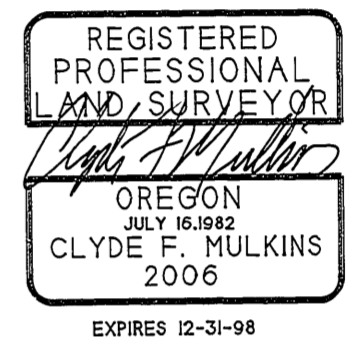
DOUGLAS COUNTY
 SURVEYOR

SURVEY FOR:
 PORT BLAKELY TREE FARMS
 P.O. BOX 1177
 COOS BAY, OR. 97420

SCOTT TIMBER CO.
 P.O. BOX 1088
 ROSEBURG, OR. 97470

MENASHA CORP.
 P.O. BOX 588
 NORTH BEND, OR. 97459

SURVEY BY:
 CLYDE F. MULKINS
 TIMBER CRUISING & ENGINEERING
 P.O. BOX 750
 COOS BAY, OR. 97420



LEGEND

- ⊙ FD. 2 1/2" BRASS CAP PER M 79 - 30 UNLESS OTHERWISE NOTED
- SET CORNER - SEE CORNER NOTES
- CALCULATED POSITION - NOT SET
- [] CORNER REF. NO.
- { } G.L.O. BEARING/DIST.
- LINES MARKED WITH 6" STEEL POSTS, RED FLAGGING, AND RED PAINTED BLAZES
- P.B.T.F. PORT BLAKELY TREE FARMS
- R.F.P. ROSEBURG FOREST PRODUCTS

NARRATIVE

THE PURPOSE OF THIS SURVEY WAS TO ESTABLISH THE BOUNDARIES AS SHOWN FOR FUTURE FOREST OPERATIONS. CONTROL WAS BASED ON THE FOLLOWING SURVEY RECORDS: SUBDIVISIONS OF T.21 S., R.12 W.; M 79-30 WITH C.S. FILE 58/140; M 125-10; CORNER RENEWAL T.21 S., R.12 W., POINT IDENTIFIER # 440700. THIS SURVEY WAS BASED ON A SERIES OF CLOSED LOOP TRAVERSES.

WHILE SEARCHING FOR THE CORNER BETWEEN SECTIONS 34 AND 35, T.20 S., R.12 W., AND SECTIONS 2 AND 3, T.21 S., R.12 W., THE ORIGINAL 1/4 CORNER BETWEEN SECTIONS 34, T.20 S., R.12 W., AND SECTION 3, T.21 S., R.12 W., WAS FOUND AND REMONUMENTED. AFTER FINDING THIS CORNER, THE ABOVE MENTIONED SECTION CORNER WAS FOUND AND REMONUMENTED. THE N 1/4 AND W 1/4 OF SECTION 2 ARE CALCULATED POSITIONS ONLY. BOTH POSITIONS FALL IN TAKENITCH LAKE. THE MONUMENTS FOUND AT THE 1/4 CORNER BETWEEN SECTIONS 11 AND 12 AND THE CE 1/16 OF SECTION PER M 79-30 WERE NOT ACCEPTED DUE TO THE FINDING OF THE ORIGINAL BT'S AT THE 1/4 CORNER BETWEEN SECTIONS 11 AND 12.

ALL NEW BEARING TREES WERE SCRIBED (HARDWOODS BARK SCRIBED) AND THE FACES PAINTED RED. DISTANCES WERE MEASURED TO A 6" SPIKE AT SIDE CENTER BASE UNLESS OTHERWISE NOTED. BEARINGS WERE MEASURED WITH A HAND COMPASS (MAGNETIC DELC. 20°E). A 6 FT. GALV. STEEL POST WAS SET WITHIN 2 FT. OF ALL NEW CORNERS.

THE FIELD WORK WAS PERFORMED BETWEEN MAY 2 AND JULY 22, 1997. ASSISTING ME WITH THIS SURVEY WERE TROY RAMBO AND RANDY MADDEN.

STATE PLANES COORDINATES WERE GENERATED USING MENASHA CORPORATION OWNED EQUIPMENT. CONTROL WAS TAKEN FROM STATION "REED" IN THE OREGON H.A.R.N.. THE REAL TIME KINEMATIC METHOD WAS USED.

DOUGLAS COUNTY SURVEYORS FILE DATA
 DO NOT REMOVE FROM OFFICE

MAP FILE M 127-39

MAP FILE M 127-39