

FILED

Date: 8-19-97 By: JP
This survey consists of:
Map: M 127-38
Narrative:
Corner Rpt:

DOUGLAS COUNTY SURVEYOR
JP

LONE ROCK TIMBER CO.

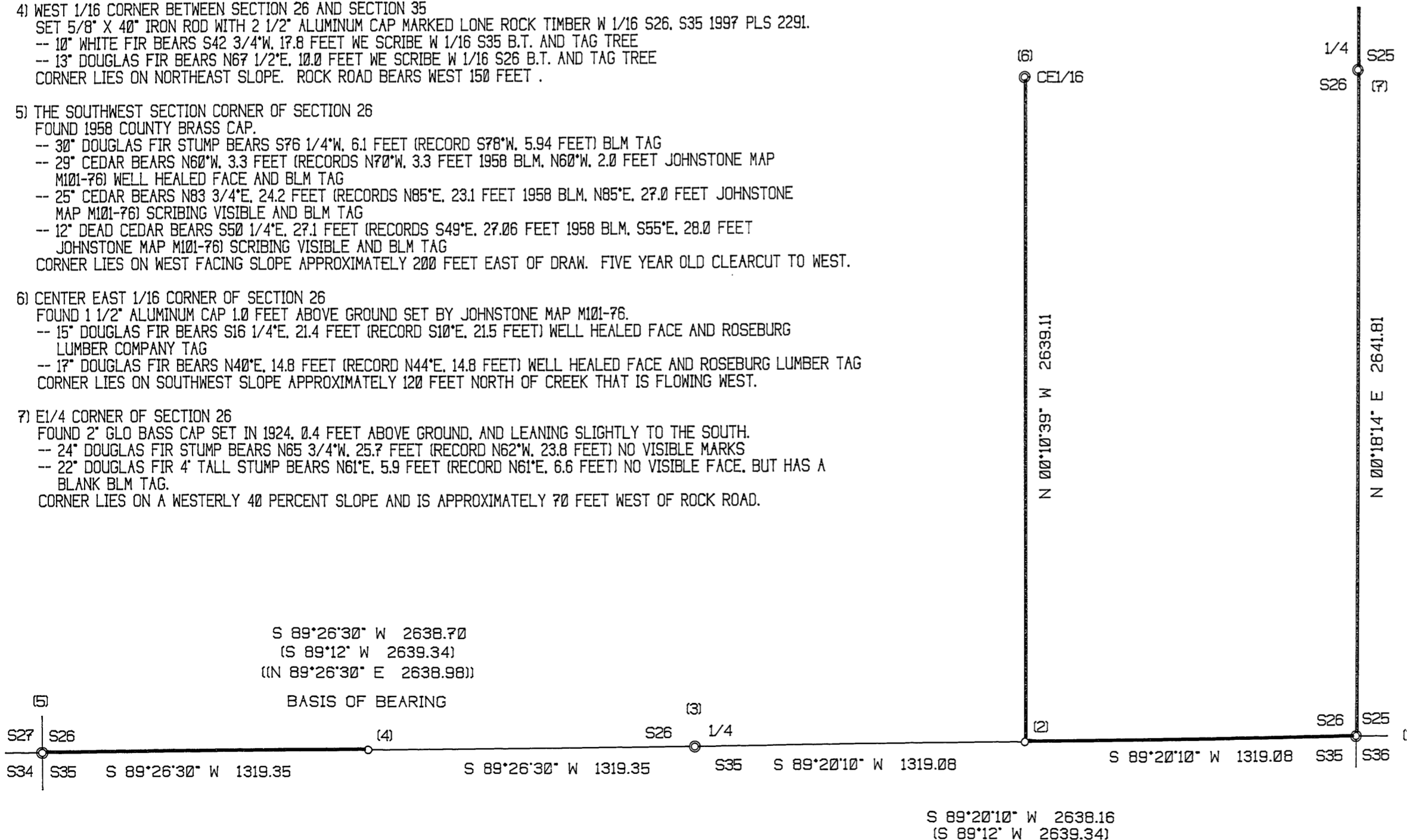
PO BOX 1127 ROSEBURG, OREGON 97470 IP 29-08-26 SURVEY
SECTION 26, TOWNSHIP 29 SOUTH, RANGE 08 WEST, W.M. DOUGLAS COUNTY, OREGON
SCALE 1" = 400' DATE: AUGUST 1997

CORNER INFORMATION :

- 1) THE SOUTHEAST SECTION CORNER OF SECTION 26
FOUND GENERAL LAND OFFICE BRASS CAP 0.3 FEET ABOVE GROUND.
-- 14" HEMLOCK BEARS N78°W, 7.0 FEET (RECORD N 73 1/2" W 6.8 FEET) OLD BLM TAG
-- 32" HEMLOCK SNAG BEARS N20°W, 38.3 FEET (RECORD N 22" W 37.6 FEET) COUNTY TAG
-- 13" DOWN HEMLOCK WITH COUNTY TAG S33°W, 15.6 FEET
-- 28" DOWN FIR WITH BLM TAG S53°E, 40.9 FEET
CORNER LIES ON STEEP SOUTH FACING SLOPE APPROXIMATELY 75 FEET NORTH OF FLAT BENCH BY MAIN CREEK.
- 2) EAST 1/16 CORNER BETWEEN SECTION 26 AND SECTION 35
SET 5/8" X 40" IRON ROD WITH 2 1/2" ALUMINUM CAP MARKED LONE ROCK TIMBER E 1/16 S26, S35 1997 PLS 2291.
-- 9" HEMLOCK BEARS S20 1/4°E, 6.8 FEET, WE SCRIBE E 1/16 S35 B.T. AND TAG TREE
-- 9" GRAND FIR BEARS N 1/2°W, 23.8 FEET, WE SCRIBE E 1/16 S26 B.T. AND TAG TREE
CORNER LIES ON NORTHWEST SLOPE, TIMBER TO NORTHEAST AND THINNED REPROD TO SOUTH AND NORTHWEST.
- 3) SOUTH 1/4 CORNER OF SECTION 26
FOUND BUREAU OF LAND MANAGEMENT BRASS CAP 0.5 FEET ABOVE GROUND.
-- 14" ROTTEN 7 FOOT TALL DOUGLAS FIR STUMP BEARS N9 3/4°W, 27.4 FEET (RECORD N10 1/2°W, 27.39 FEET)
BLM TAG AND VISIBLE SCRIBING
-- 16" DOUGLAS FIR BEARS S42 3/4°E, 12.5 FEET (RECORD S42 1/4°E, 12.5 FEET) BLM TAG AND LRT TAG WELL HEALED FACE
CORNER LIES ON EAST FACING SLOPE. TEN YEAR OLD REPROD TO NORTH AND BLM TIMBER TO SOUTH.
- 4) WEST 1/16 CORNER BETWEEN SECTION 26 AND SECTION 35
SET 5/8" X 40" IRON ROD WITH 2 1/2" ALUMINUM CAP MARKED LONE ROCK TIMBER W 1/16 S26, S35 1997 PLS 2291.
-- 10" WHITE FIR BEARS S42 3/4°W, 17.8 FEET WE SCRIBE W 1/16 S35 B.T. AND TAG TREE
-- 13" DOUGLAS FIR BEARS N67 1/2°E, 10.0 FEET WE SCRIBE W 1/16 S26 B.T. AND TAG TREE
CORNER LIES ON NORTHEAST SLOPE. ROCK ROAD BEARS WEST 150 FEET .
- 5) THE SOUTHWEST SECTION CORNER OF SECTION 26
FOUND 1958 COUNTY BRASS CAP.
-- 30" DOUGLAS FIR STUMP BEARS S76 1/4°W, 6.1 FEET (RECORD S78°W, 5.94 FEET) BLM TAG
-- 29" CEDAR BEARS N60°W, 3.3 FEET (RECORDS N70°W, 3.3 FEET 1958 BLM, N60°W, 2.0 FEET JOHNSTONE MAP M101-76) WELL HEALED FACE AND BLM TAG
-- 25" CEDAR BEARS N83 3/4°E, 24.2 FEET (RECORDS N85°E, 23.1 FEET 1958 BLM, N85°E, 27.0 FEET JOHNSTONE MAP M101-76) SCRIBING VISIBLE AND BLM TAG
-- 12" DEAD CEDAR BEARS S50 1/4°E, 27.1 FEET (RECORDS S49°E, 27.06 FEET 1958 BLM, S55°E, 28.0 FEET JOHNSTONE MAP M101-76) SCRIBING VISIBLE AND BLM TAG
CORNER LIES ON WEST FACING SLOPE APPROXIMATELY 200 FEET EAST OF DRAW. FIVE YEAR OLD CLEARCUT TO WEST.
- 6) CENTER EAST 1/16 CORNER OF SECTION 26
FOUND 1 1/2" ALUMINUM CAP 1.0 FEET ABOVE GROUND SET BY JOHNSTONE MAP M101-76.
-- 15" DOUGLAS FIR BEARS S16 1/4°E, 21.4 FEET (RECORD S10°E, 21.5 FEET) WELL HEALED FACE AND ROSEBURG LUMBER COMPANY TAG
-- 17" DOUGLAS FIR BEARS N40°E, 14.8 FEET (RECORD N44°E, 14.8 FEET) WELL HEALED FACE AND ROSEBURG LUMBER TAG
CORNER LIES ON SOUTHWEST SLOPE APPROXIMATELY 120 FEET NORTH OF CREEK THAT IS FLOWING WEST.
- 7) E1/4 CORNER OF SECTION 26
FOUND 2" GLO BASS CAP SET IN 1924, 0.4 FEET ABOVE GROUND, AND LEANING SLIGHTLY TO THE SOUTH.
-- 24" DOUGLAS FIR STUMP BEARS N65 3/4°W, 25.7 FEET (RECORD N62°W, 23.8 FEET) NO VISIBLE MARKS
-- 22" DOUGLAS FIR 4" TALL STUMP BEARS N61°E, 5.9 FEET (RECORD N61°E, 6.6 FEET) NO VISIBLE FACE, BUT HAS A BLANK BLM TAG.
CORNER LIES ON A WESTERLY 40 PERCENT SLOPE AND IS APPROXIMATELY 70 FEET WEST OF ROCK ROAD.

NARRATIVE :

THIS SURVEY WAS CONDUCTED TO ESTABLISH PROPERTY CORNERS AND PROPERTY LINES FOR TIMBER CUTTING PURPOSES. WE INITIATED THIS SURVEY AT THE SE CORNER OF SECTION 26 (A BLM BCIP SET FROM ORIGINAL EVIDENCE) BEGINNING A RANDOM TRAVERSE WESTERLY TO THE SOUTH 1/4 OF SECTION 26, A BLM BCIP SET BY PROPORTION. WE THEN CONTINUED WESTERLY TO THE SW CORNER OF SECTION 26 (A BLM BCIP SET FROM ORIGINAL EVIDENCE). WE THEN RETURNED AND SET THE E 1/16 BETWEEN SECTIONS 26 AND 35 BEGINNING A NEW TRAVERSE NORTHERLY TO THE CE 1/16, AN IRON ROD SET BY JOHNSTONE FROM WHICH WE CALCULATED OUR CLOSURE WITH JOHNSTONE'S MAP 101-76 FOR THE SWSC, SOUTH 1/4 AND CE 1/16 WITHIN ACCEPTABLE LIMITS. RETURNING TO THE SOUTH 1/4 WE BEGIN A NEW TRAVERSE WITH A LONG SHOT TO THE E 1/4 OF SECTION 26 (A BLM BCIP SET FROM ORIGINAL EVIDENCE) TRAVERSING SOUTHERLY ALONG THE SECTION LINE TO CLOSE OUR SURVEY BACK AT THE SE CORNER OF SECTION 26. WE BLAZED, PAINTED AND TAGGED ALL PROPERTY LINES AS SHOWN HEREON. THIS SURVEY WAS DONE WITH A NIKON DTM 450 TOTAL STATION WITH GARY ANGIOLET AND JERRY RAGON ASSISTING ME.



LEGEND :

- ⊙ - FOUND MONUMENT
- - SET 5/8" BY 40" IRON ROD WITH ALUMINUM CAP
- - PROJECTED LINES
- - LINES FLAGGED, BLAZED & TAGGED
- ▲ - COMPUTED NOT SET
- [] - BLM FIELD NOTES PAGES 15761 AND 15762
- [[]] - HOWARD JOHNSTONE RECORD SURVEY FILED IN DOUGLAS COUNTY SURVEYORS OFFICE M101-76

REGISTERED
PROFESSIONAL
LAND SURVEYOR

Ken W. Hoffine
OREGON
JULY 16, 1997
KEN W. HOFFINE
2281

EXPIRES 6-30-99

N
BASIS OF BEARING
JOHNSTONE MAP M101-76

MAP FILE M 127-38

MAP FILE M 127-38