

CORRECTION PLAT TO M126 - 26 (DOUGLAS COUNTY) AND CS# 22A183 (COOS COUNTY) BOUNDARY LINE SURVEY

SURVEY FOR: GEORGIA-PACIFIC WEST, INC. P.O. BOX 1528 COOS BAY, OR. 97420

SURVEY BY: CLYDE F. MULKINS TIMBER CRUISING & ENGINEERING P.O. BOX 750 COOS BAY, OR. 97420

FILED

Date: 5-2-97 By: JP This survey consists of: Map: M126-72 Narrative: Corner Rpt:

DOUGLAS COUNTY JP SURVEYOR



LEGEND

- FD. CORNERS AS SHOWN SET 5/8" X 36" REBAR WITH A 2" ALUM. CAP LINES FLAGGED AND BLAZED GLO RECORD

FD. A 1957 DOUGLAS CO. BRASS CAP FROM WHICH: FD. RECORD 52" DF STUMP N33 1/2"E. 32 lks. - UPROOT FD. RECORD 32" CEDAR STUMP WITH SCRIBES BEARS N20"W. 41 lks. FD. RECORD 52" CEDAR STUMP BEARS S33"W. 80 lks. - NO MARKS FD. 20" DF WITH A HEALED FACE BEARS N3 1/2"E. 15 lks. FD. 17" DF WITH A HEALED FACE BEARS N50"W. 86 lks. FD. 19" DF WITH A HEALED FACE BEARS S66 1/2"W. 68.5 lks.



BASIS OF BEARING SOLAR OBSERVATION

SCALE 1" = 600' JANUARY 6, 1997 FEBRUARY 12, 1997

CORNER NOTES FOR 1/4 CORNER BETWEEN SEC.'S 36 AND 31

- 9" DF SCRIBED 1/4 S31 BT BEARS N10"E. 22.9 FT. 7" HEMLOCK SCRIBED 1/4 S31 BT BEARS S87"E. 4.3 FT. 12" DF SCRIBED 1/4 S31 BT BEARS S4"E. 47.8 FT. 13" DF SCRIBED 1/4 S36 BT BEARS S31"W. 9.0 FT.

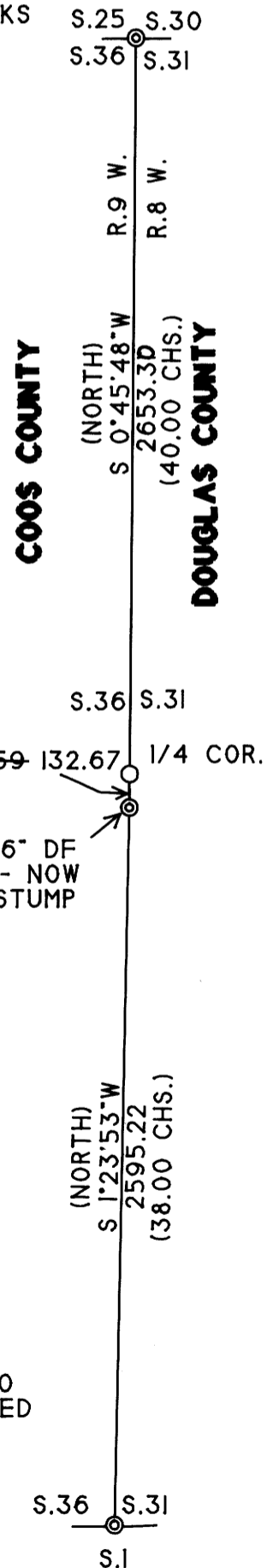
NARRATIVE

THE PURPOSE OF THIS CORRECTION PLAT WAS TO CORRECTLY RE-ESTABLISH THE 1/4 CORNER BETWEEN SECTIONS 31 AND 36 BY PROPORTION MEASUREMENT BETWEEN THE FOUND REMAINS OF A 36" D.FIR G.L.O. LINE TREE AND THE COMMON CORNER TO SECTIONS 25, 36, 30, AND 31 SHOWN. THE BLAZED LINE DID NOT CHANGE. THE 1/4 CORNER MONUMENT PREVIOUSLY ESTABLISHED WAS PULLED FROM THE GROUND. THE BEARING TREE SCRIBES WERE CHOPPED OUT AND PAINTED BLACK AND ALL CORNER ACCESSORIES WERE REMOVED.

COOS COUNTY RECORDS USED FOR CONTROL WERE: CS#22B15, BK. G55 PG.190 AND 191, AND CS#22A183. DOUGLAS COUNTY RECORDS USED FOR CONTROL WERE: T.27 S.. R.8 W.. CORNER RENEWAL NO. 15 AND 22, AND M126 - 26. THE CORNER WAS SET USING PREVIOUS SURVEY TRAVERSE HUBS FOUND IN GOOD CONDITION.

THE FIELD WORK WAS PERFORMED ON FEBRUARY 11, 1997. ASSISTING ME WERE TROY RAMBO AND RANDY MADDEN.

FD. A 1970 DOUGLAS CO. BRASS CAP FROM WHICH: FD. 31" ROTTEN AND BURNED WH STUMP BEARS N68"E. 21.0 FD. REMAINS OF RECORD 22" YEW - UPROOTED AND BURNED 1 SCRIBED "S36 BT" ON AN 8" DF BEARS N64"W. 22.1 FT. 1 SCRIBED "S36 BT" ON AN 8" DF BEARS N2"W. 4.5 FT. 1 SCRIBED "S31 BT" ON AN 8" DF BEARS N60"E. 21.6 FT. 1 SCRIBED "X BT" ON A 9" DF BEARS S17"W. 8.6 FT.



COUNTY SURVEYORS FILE DATA DO NOT REMOVE FROM OFFICE