

BOUNDARY LINE AGREEMENT MAP

LONE ROCK TIMBER CO.

PO BOX 1127 ROSEBURG OREGON 97470 DATE: SEPT 1996
 SOUTH 1/2 SEC. 24, TOWNSHIP 25 SOUTH, RANGE 5 WEST, W.M. DOUGLAS, OREGON
 MT. SCOTT #13 SURVEY SCALE 1" = 500'

COUNTY SURVEYORS FILE DATA
 DO NOT REMOVE FROM OFFICE

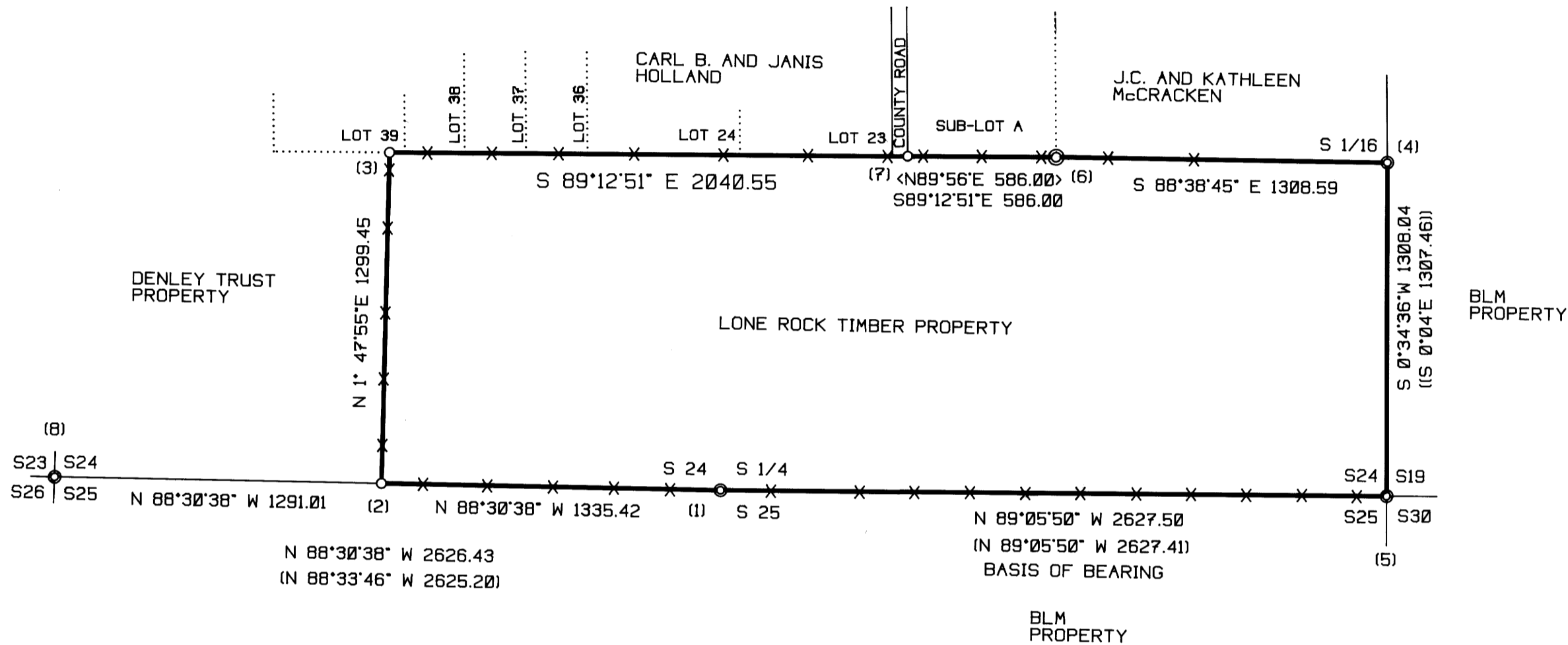
FILED
 Date: 12-3-96 By: JP
 This survey consists of:
 Map: M126-5
 Narrative:
 Corner Pkt:
 DOUGLAS COUNTY SURVEYOR

NARRATIVE

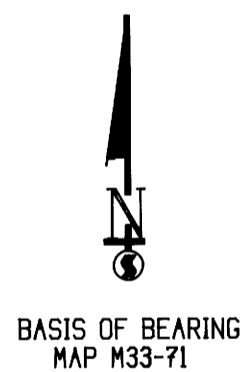
THIS SURVEY WAS CONDUCTED TO ESTABLISH PROPERTY CORNERS AND PROPERTY LINES FOR A BOUNDARY LINE AGREEMENT BETWEEN LONE ROCK TIMBER CO. AND THREE NEIGHBORING PROPERTY OWNERS (DENLEY TRUST, KATHY MCKRACKEN AND CARL B. AND JANIS HOLLAND.) THE DEED DESCRIPTION FOR LRT NEIGHBORS IS BASED ON PLAT I AND K SUTHERLIN LAND AND WATER SUBDIVISION PLATS. THESE PLATS DESCRIBE THEIR SOUTHERN EXTERIOR BOUNDARY LINES METES AND BOUNDS INDEPENDENTLY FROM LONE ROCK'S DEED DESCRIPTION OF ITS NORTH LINE BASED UPON THE LEGAL SUBDIVISION OF SECTION 24. WE INITIATED THIS SURVEY AT THE S 1/4 OF SECTION 24. A BLM BCIP SET FROM ORIGINAL EVIDENCE TRAVERSING RANDOMLY WESTERLY TO A FENCE CORNER RECOGNIZED AS THE SOUTHWEST CORNER OF LONE ROCK'S PROPERTY. WE MADE A CLOSED LOOP TRAVERSE FROM HERE TO TIE IN THE SOUTHWEST CORNER OF SECTION 24 AN IRON ROD SET BY PROPORTION. AND THEN SET AN IRON ROD ON THE SOUTH LINE OF SECTION 24 AT THE SOUTHWEST FENCE CORNER. WE THEN TRAVERSED NORTHERLY TO A FENCE CORNER RECOGNIZED AS THE NORTHWEST CORNER OF LONE ROCK'S PROPERTY SETTING AN IRON ROD AT CORNER. WE CONTINUE OUR TRAVERSE EASTERLY TO A ROCK MONUMENT SET FOR THE SOUTHEAST CORNER OF BLOCK 4 PLAT K. WE SET A 5/8" IRON ROD ON LINE AT THE RECORD DISTANCE OF 586.00 FEET FROM THE SOUTHWEST CORNER OF BLOCK 4 TO THE SOUTHWEST CORNER OF BLOCK 4. NEAR THE COUNTY ROAD. WE THEN TRAVERSE EASTERLY TO THE S1/16 OF SECTION 24 A BLM BCIP SET FROM ORIGINAL EVIDENCE. WE CONTINUE BACK TO THE S1/4 OF SECTION 24 TO CLOSE OUR TRAVERSE. THIS SURVEY WAS DONE WITH A NIKON DTM-20A TOTAL STATION WITH GARY ANGIOLET AND GERALD RAGON ASSISTING ME.

CORNER INFORMATION

- 1) SOUTH 1/4 CORNER OF SECTION 24
 FOUND DOUGLAS COUNTY BRASS CAP 1.0 FEET ABOVE GROUND IN GOOD CONDITION.
 -- 32" DOUGLAS FIR STUMP BEARS S3 1/4"W, 25.1 FEET (RECORD S39"W, 25.0 FEET) WELL HEALED FACE AND BLM TAG
 -- 28" HIGH DOUGLAS FIR STUMP BEARS N 2 1/4" E, 27.1 FEET (RECORD N9"E, 27.2 FEET) WELL HEALED FACE AND BLM TAG
 -- HOLLOWED OUT OAK STUB BEARS N53 1/4"W, 63.0 FEET (RECORD N54"W, 63.4 FEET)
 -- NEW B.T. 13" DOUGLAS FIR BEARS S50 3/4"E, 20.1 FEET. WE SCRIBED 1/4 S25 B.T.
 CORNER LIES ON SOUTH SIDE OF DIRT SPUR ROAD ON MAIN RIDGE.
- 2) PROPERTY CORNER SOUTHWEST CORNER OF TRACT
 SET 5/8" X 40" IRON ROD WITH PLASTIC CAP MARKED LONE ROCK TIMBER PLS 2291.
 -- 15" DOUGLAS FIR BEARS S86 1/4"W, 27.1 FEET. WE SCRIBE "BT" AND TAG TREE
 -- 27" DOUGLAS FIR BEARS N24 1/2"E, 21.9 FEET. WE SCRIBE "BT" AND TAG TREE
 CORNER LIES ON SOUTHEAST SLOPE APPROXIMATELY 8.0 FEET SOUTH OF FENCE CORNER WHICH BEARS EAST-WEST AND NORTH
- 3) PROPERTY CORNER NORTHWEST CORNER OF TRACT
 SET 5/8" X 40" IRON ROD WITH PLASTIC CAP MARKED LONE ROCK TIMBER PLS 2291.
 -- 15" DOUGLAS FIR BEARS N52 1/2"E, 8.3 FEET. WE SCRIBE "BT" AND TAGGED TREE
 CORNER IS ON A STEEP WEST SLOPE AT CORNER OF FENCE WHICH RUNS EAST AND SOUTH.
- 4) SOUTH 1/16 CORNER BETWEEN SECTIONS 19 AND 24
 FOUND BLM BRASS CAP IN GOOD CONDITION.
 -- 29" DOUGLAS FIR BEARS S11 1/2"E, 35.6 FEET (RECORD S12 1/2"E, 35.64 FEET) WELL HEALED FACE AND BLM TAG
 -- 28" DOUGLAS FIR STUMP BEARS N12 3/4"W, 43.6 FEET (RECORD N12 1/2"W, 43.56 FEET) WELL HEALED FACE AND BLM TAG
 CORNER LIES ON NORTHWEST SLOPE APPROXIMATELY 30 FEET NORTH OF FENCE AND 20 FEET EAST OF FENCE.
- 5) SOUTHEAST CORNER OF SECTION 24
 FOUND BLM BRASS CAP IN GOOD CONDITION.
 -- 26" DOUGLAS FIR BEARS N16 1/2"E, 135.6 FEET AS PER RECORD
 -- LARGE ROTTEN SNAG BEARS S19"W, 17.8 FEET AS PER RECORD
 -- 10" DOUGLAS FIR BEARS N67 1/4"W, 92.4 FEET AS PER RECORD
 CORNER LIES ON EXTREMELY STEEP NORTH SLOPE APPROXIMATELY 20 FEET SOUTH OF OLD CAT ROAD.
- 6) SOUTHEAST CORNER ON PLAT-K BLOCK 4
 FOUND A RECTANGULAR STONE WITH "X" ON TOP AND "JM" ON NORTHWEST SIDE.
 -- 12" DOUGLAS FIR BEARS N48 1/4"E, 12.6 FEET. WE SCRIBE "BT" AND TAGGED
 CORNER LIES IN EAST-WEST FENCE LINE.
- 7) COUNTY ROAD IRON ROD
 SET A 5/8" X 40" IRON ROD WITH PLASTIC CAP MARKED LONE ROCK TIMBER PLS 2291.
 -- 15" ASH BEARS N88 1/2"E, 89.8 FEET. WE SCRIBE B.T. AND TAG
 -- TREATED FENCE POST BEARS S82 1/2"E, 9.1 FEET. WE TAG
 IRON ROD BEARS APPROXIMATELY 17 FEET EAST OF CENTERLINE OF GRAVEL ROAD.
- 8) SOUTHWEST CORNER OF SECTION 24
 FOUND 5/8" IRON ROD 0.6 FEET ABOVE GROUND IN GOOD CONDITION.
 -- 14" DOUGLAS FIR BEARS S43 3/4"W, 32.6 FEET (RECORD S43 1/2"W, 33.3 FEET) WELL HEALED FACE. WE TAG
 -- 18" DOUGLAS FIR BEARS S37 3/4"E, 68.5 FEET (RECORD S36 1/2"E, 68.0 FEET) WELL HEALED FACE. WE TAG
 -- 10" DOUGLAS FIR BEARS N33"W, 54.5 FEET (RECORD N30"W, 54.5 FEET) WELL HEALED FACE. WE TAG
 -- 12" DOUGLAS FIR AT N69"E 27.0 FEET BLOWN DOWN
 CORNER LIES 17.0 FEET NORTH OF EAST-WEST FENCE LINE AND 19.0 FEET SOUTH OF SHALLOW DRAW.
 ALSO 95.0 FEET WEST OF RESERVOIR, AND 53.0 FEET N66" OF OLD FENCE CORNER.
 FENCES RUN EAST-WEST AND SOUTH FROM FENCE CORNER.



REGISTERED
 PROFESSIONAL
 LAND SURVEYOR
Ken W. Hoffine
 OREGON
 JULY 15, 1987
 KEN W. HOFFINE
 2291
 EXPIRES 6-30-97



LEGEND:

- ⊙ - FOUND MONUMENT
- - SET MONUMENT
- - PROJECTED LINES
- - LINES FLAGGED, BLAZED & TAGGED
- () - BENTZ MAP M 33-71
- (()) - BLM LINE NOTES PAGES 17515 & 17516
- < > - PLAT - K SUBDIVISION IN SUTHERIN