

COUNTY SURVEYORS FILE DATA
DO NOT REMOVE FROM OFFICE

MAP OF SURVEY

LOCATED in Section 12, T. 25 S., R. 7 W., W.M.
in Douglas County, Oregon.
February 28, 1997

FILED

Date: 3-7-97 By: JP
This survey consists of:
Map: M 126-45
Narrative: C.S. 65/12-3 A+B
Corner Ppt: _____

DOUGLAS COUNTY
SURVEYOR

SURVEYED FOR: ROSEBURG RESOURCES
P.O. BOX 1088
ROSEBURG, OREGON 97470

SURVEYED BY: DAVID EDWARDS LAND SURVEYING
P.O. BOX 41
OAKLAND, OREGON 97462
PHONE: (541) 459-0512

REGISTERED
PROFESSIONAL
LAND SURVEYOR

David A. Edwards

OREGON
JULY 26, 1988
DAVID A. EDWARDS
2339

EXPIRES 12/31/97

LEGEND

○ INDICATES 5/8" x 30" STEEL PIN W/ALUM. CAP MKD. "ROSEBURG RESOURCES COMPANY" & "LS 2339" & MKD. AS PER 1973 B.L.M. MANUAL.

———— DENOTES BOUNDARY LINE BLAZED & POSTED THIS SURVEY.

() DENOTES G.L.O. RECORD DATA UNLESS NOTED OTHERWISE.

B.L.M. = BUREAU OF LAND MANAGEMENT. CHS. = CHAINS

D.C.S. = DOUGLAS COUNTY SURVEYOR. G.L.O. = GOVERNMENT LAND OFFICE.

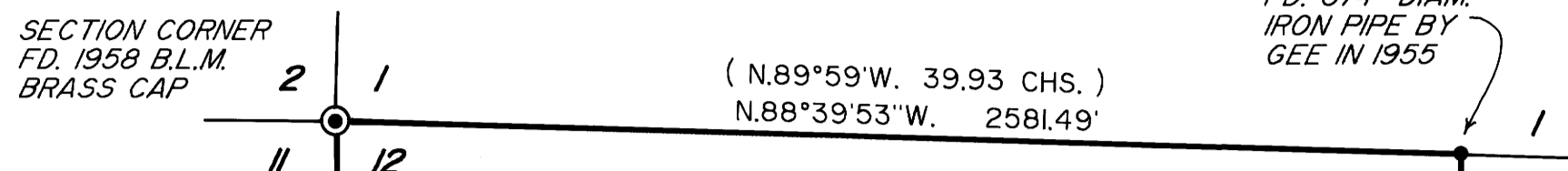
BASIS OF BEARINGS: M 124-3 AS SHOWN.

SCALE: 1" = 400' NARRATIVE IS A SEPARATE DOCUMENT. C.S. 65/12-3 A+B

SECTION CORNER
FD. 1958 B.L.M.
BRASS CAP

(N.89°59'W. 39.93 CHS.)
N.88°39'53"W. 2581.49'

1/4 CORNER
FD. 3/4" DIAM.
IRON PIPE BY
GEE IN 1955



2596.46'
(40 CHS.)

2723.27'

80 CHS.)
5196.41'
5192.92'

PROPORTIONATE 1/4
COR. POSITION FALLS
ON WEST FACE OF
LARGE BOULDER.
SET WITNESS MON.
S.85°52'07"E., 6.35'
SEE NARRATIVE

SET CW 1/16 COR.
SEE NARRATIVE

CENTER 1/4 CORNER FALLS
IN LARGE ROOT WAD.
SET WITNESS MON.
N.0°29'00"W., 7.12'
SEE NARRATIVE

(N.0°01'W.)
M 49-5
(N.0°17'W.)
N.0°21'19"W.

SET SOUTH 1/16 COR.
SEE NARRATIVE

SET SW 1/16 COR.
SEE NARRATIVE

SET CE 1/16 COR.
SEE NARRATIVE

1/4 CORNER
FD. 1963 D.C.S.
BRASS CAP

SECTION CORNER
FD. "X" ON
8' x 6' x 6"
BOULDER PER
1857 G.L.O. SURVEY

N.87°28'39"W. 2595.34'
BASE BEARING (2595.78')
M 124-3
(N.89°59'W. 40.08 CHS.)

1/4 CORNER
FD. 1962 D.C.S.
BRASS CAP

SET EAST 1/16 COR.
SEE NARRATIVE

SECTION CORNER
FD. 1968 B.L.M.
BRASS CAP



MAP FILE M 126-45

MAP FILE M 126-45

David A. Edwards - Professional Land Surveyor

P.O. Box 41
Oakland, OR 97462



(541) 459-0512

SURVEY NUMBER M 126-45

SURVEY NARRATIVE TO COMPLY WITH CHAPTER 209, PARAGRAPH 250,
OREGON REVISED STATUTES

SURVEY FOR: Roseburg Resources
P.O. Box 1088
Roseburg, Oregon 97470

LOCATION: In Section 12, T. 25 S., R. 7 W., W.M. in Douglas
County, Oregon.

PURPOSE: To locate and monument certain boundaries in and
around Section 12 as shown on the accompanying
map.

PROCEDURE: A series of looped control traverses were
executed which tied in the necessary controlling
corner monuments. After prudent adjustment the
random points were then offset to true line and
the true line was blazed on each side and steel
posts were set along the line. Red flagging was
placed along all blazed lines and the blazes
painted yellow. A thorough search was made for
original evidence of the West 1/4 corner to no
avail. This corner was therefore proportioned as
shown. Section 12 was subdivided pursuant to the
1973 B.L.M. Manual of Instructions. Monuments set
on this survey consist of 5/8" x 30" steel pins
with an aluminum cap mkd. "Roseburg Resources
Company" and "LS 2339" together with the stamped
information called for in said Manual. Bearing
trees are scribed according to said Manual, are
measured to the center of tree at root crown and
are situated as follows:

At the West 1/4 Corner of Section 12:
Corner falls on the West face of a large boulder.
Set a witness monument S.85°52'07"E., 6.35 ft.
from true cor. and add marks W.M. to cap. From
the true corner:

A 14" diam. Fir bears N. 6° E., 40.06 feet.
A 6" diam. Fir bears S. 30° E., 35.55 feet.
A 10" diam. Fir bears S. 26° W., 51.34 feet.
An 8" diam. Fir bears N. 60° W., 44.39 feet.

At the South 1/16 Cor. to Sections 11 and 12:

A 13" diam. Fir bears N. 78° E., 21.82 feet.
A 10" diam. Fir bears S. 16° W., 6.10 feet.

At the SW 1/16 Corner of Section 12:

An 8" diam. Fir bears N. 60° E., 10.59 feet.
A 10" diam. Fir bears N. 67° W., 17.50 feet.

David A. Edwards - Professional Land Surveyor

P.O. Box 41
Oakland, OR 97462



(541) 459-0512

At the CW 1/16 Corner of Section 12:

A 16" diam. Fir bears S. 29° E., 8.34 feet.
A 7" diam. Fir bears S. 20° W., 13.75 feet.

At the Center 1/4 Corner of Section 12:

Corner falls in a large root wad West of logging road. Set witness monument N.0°29'00"W., 7.12 ft. from true corner and add marks W.M. to cap. From the true corner:

A 5/8" x 30" steel pin w/red plastic cap mkd. "D.A. EDWARDS-LS 2339" bears N.20°02'06"E., 20.07 feet on West edge road.

A 5/8" x 30" steel pin w/red plastic cap mkd. "D.A. EDWARDS-LS 2339" bears S.59°12'06"E., 16.53 feet on West edge road.

A 13" diam. Fir brs. S.49°42'30"W., 33.31 ft.
A 10 diam. Fir brs. N.10°54'26"W., 34.12 ft.

At the CE 1/16 Corner of Section 12:

A 7" diam. Fir bears N. 1° E., 4.43 feet.
A 9" diam. Fir bears S. 44° E., 16.08 feet.

At the East 1/16 Cor. to Sections 12 and 13:

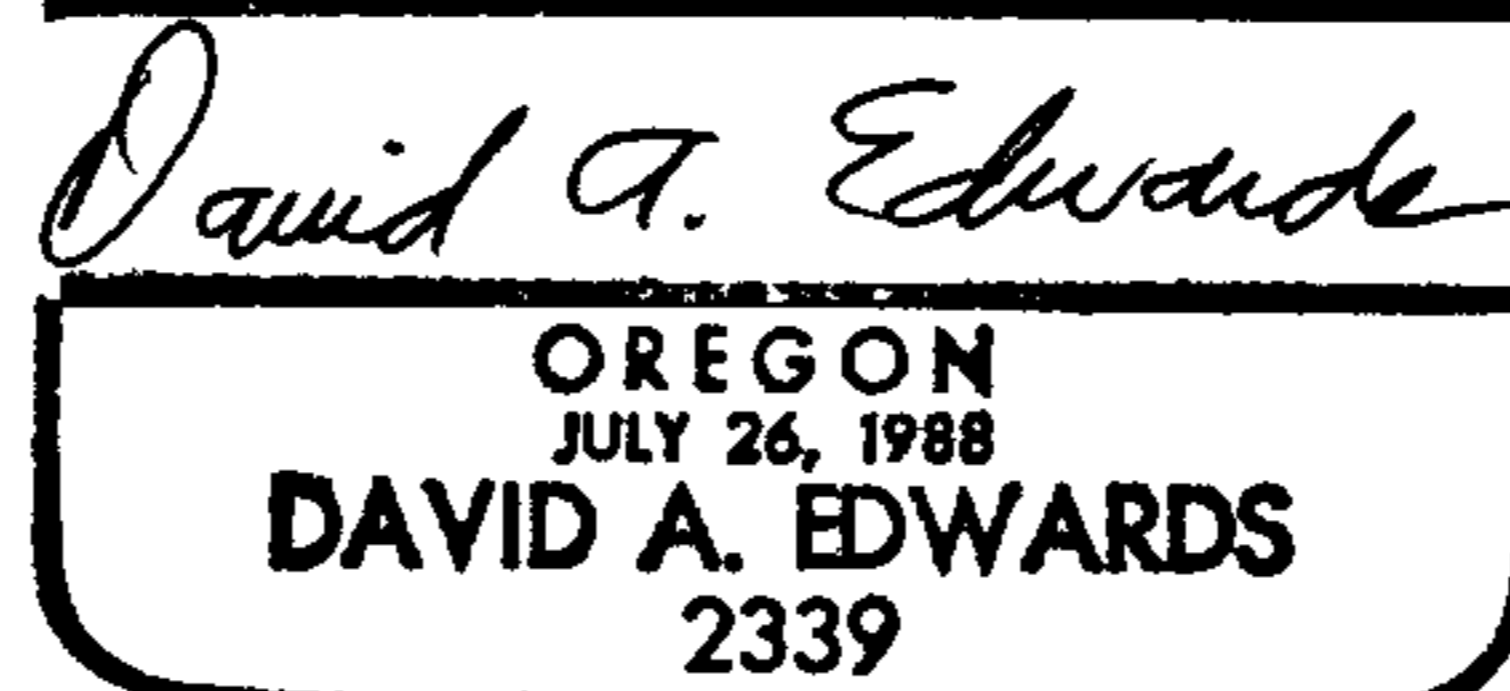
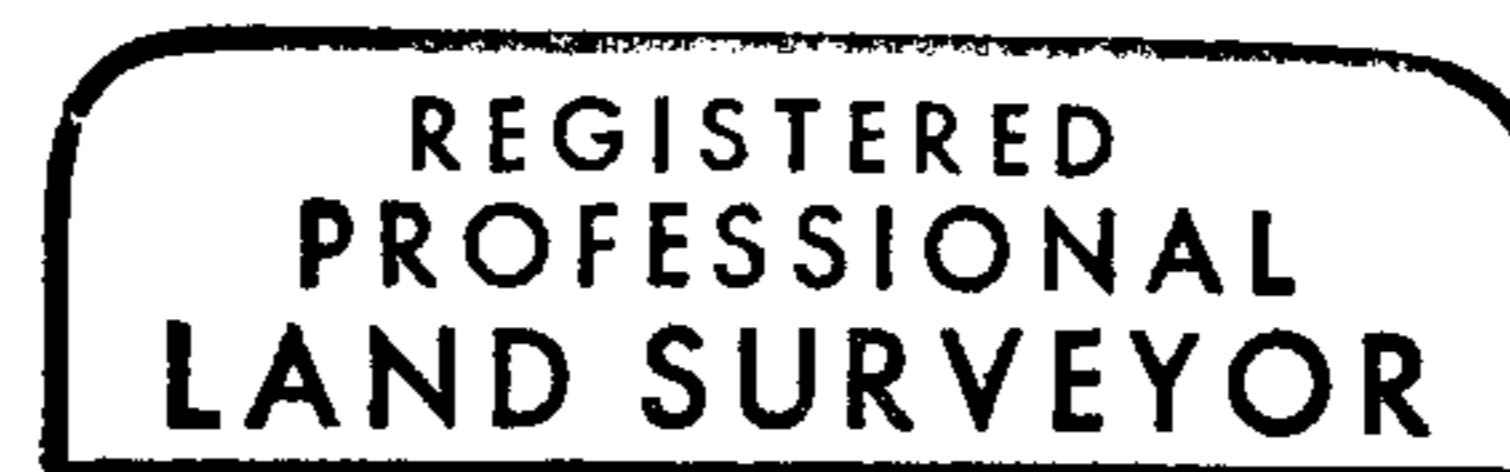
A 27" diam. Fir bears S. 30° E., 21.15 feet.
A 22" diam. Fir bears S. 88° E., 38.80 feet.

Except at the Center 1/4 corner bearings were measured with hand compass with declination set at 18° East

BASIS OF BEARINGS: South line SW 1/4 Sec. 12 per M 124-3.

EQUIPMENT: Nikon DTM-A10LG Electronic Total Station.

DATE COMPLETED: February 28, 1997.



Expires 12/31/97

FILED

Date: 3-7-97 By: JP

This survey consists of:

Map: M126-45

Narrative: C.S. 65/12-3A+B

Corner Rpt: _____

DOUGLAS COUNTY
SURVEYOR

C.S. File No. 65/12-3B