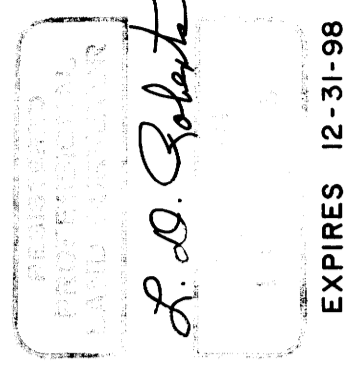
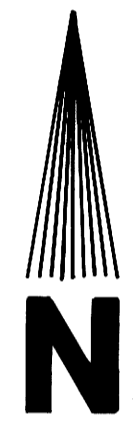


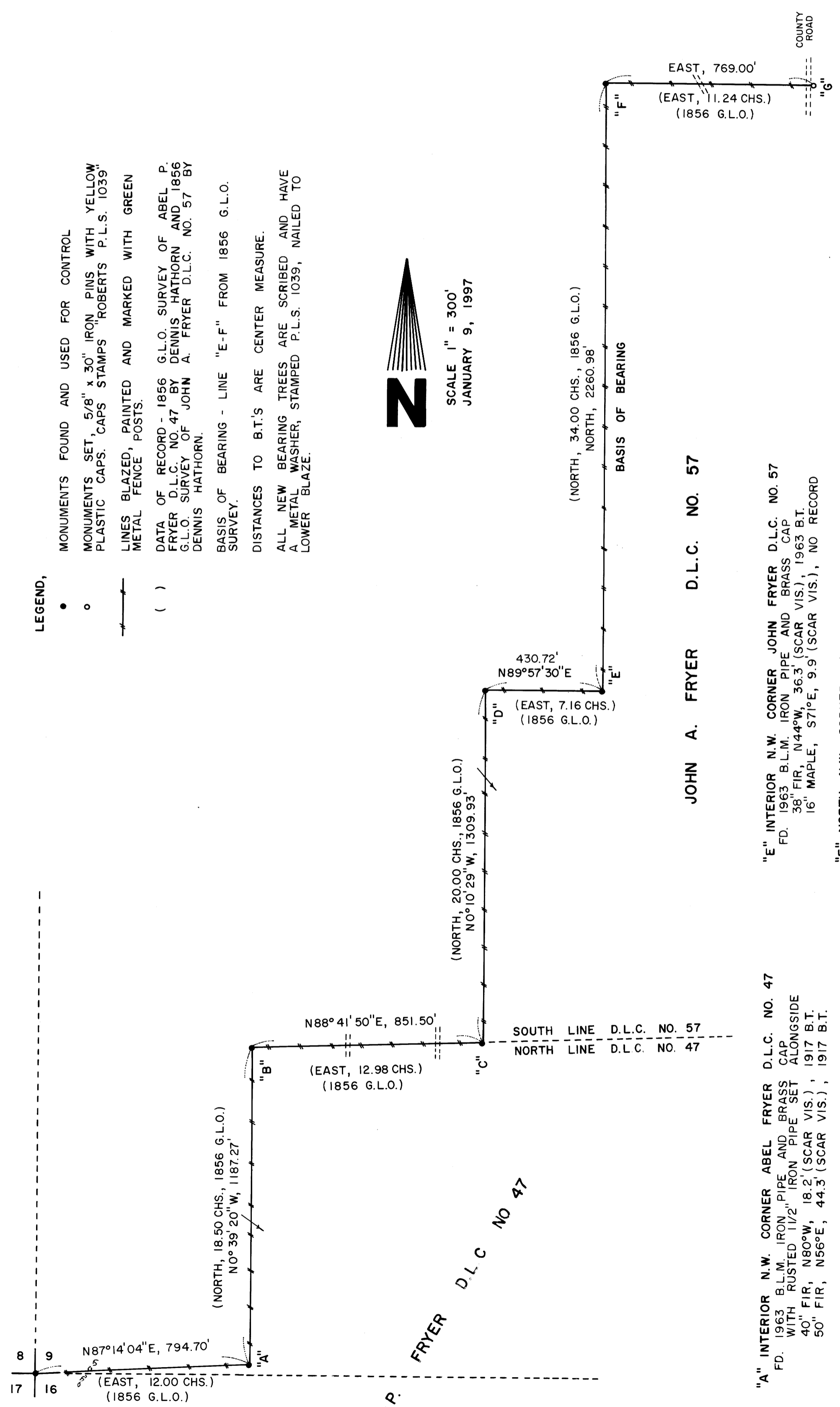
BOUNDARY SURVEY
 OF
 MEINTS PROPERTY
 IN
 ABEL P. FRYER D.L.C. NO. 47
 AND
 JOHN A. FRYER D.L.C. NO. 57
 SECTION 9, T22S, R8W, W.M.
 DOUGLAS COUNTY, OREGON
 BY
 ROBERTS SURVEYING INC.
 P.O. BOX 7155
 EUGENE, OREGON 97401
 PHONE 345-1112



LEGEND,
 • MONUMENTS FOUND AND USED FOR CONTROL
 ○ MONUMENTS SET, 5/8" x 30" IRON PINS WITH YELLOW PLASTIC CAPS. CAPS STAMPS "ROBERTS P.L.S. 1039"
 — LINES BLAZED, PAINTED AND MARKED WITH GREEN METAL FENCE POSTS.
 () DATA OF RECORD - 1856 G.L.O. SURVEY OF ABEL P. FRYER D.L.C. NO. 47 BY DENNIS HATHORN AND 1856 G.L.O. SURVEY OF JOHN A. FRYER D.L.C. NO. 57 BY DENNIS HATHORN.
 BASIS OF BEARING - LINE "E-F" FROM 1856 G.L.O.
 DISTANCES TO B.T.'S ARE CENTER MEASURE.
 ALL NEW BEARING TREES ARE SCRIBED AND HAVE A METAL WASHER, STAMPED P.L.S. 1039, NAILED TO LOWER BLAZE.



SCALE 1" = 300'
 JANUARY 9, 1997



S.W. CORNER SECTION 9
 FD. 1962 DOUGLAS COUNTY IRON PIPE AND BRASS CAP
 (NO 1962 BEARING TREES FOUND)
 SET 14" FIR, N89°W, 48.7' (SCRIBED/METAL WASHER/PAINTED RED)
 14" FIR, S06°E, 3.8' (SCRIBED/METAL WASHER/PAINTED RED)

JOHN A. FRYER D.L.C. NO. 57

- "A" INTERIOR N.W. CORNER ABEL FRYER D.L.C. NO. 47
 FD. 1963 B.L.M. IRON PIPE AND BRASS CAP
 WITH RUSTED 1/2" IRON PIPE SET ALONGSIDE
 40" FIR, N80°W, 18.2' (SCAR VIS.), 1917 B.T.
 50" FIR, N56°E, 44.3' (SCAR VIS.), 1917 B.T.
- "B" NORTH N.W. CORNER ABEL FRYER D.L.C. NO. 47
 FD. 1991 DOUGLAS COUNTY IRON PIPE AND BRASS CAP
 46" FIR STUMP, S75°W, 11.9' (SCAR VIS.), 1856 B.T.
 30" FIR STUMP, N45°W, 10.0' (NO MARKS), 1917 B.T.
 36" FIR STUMP, S77°E, 48.8' (NO MARKS), 1963 B.T.
 6" FIR, N80°E, 28.0' (SCAR VIS.), 1991 B.T.
 7" FIR, S34°W, 53.0' (SCAR VIS.), 1991 B.T.
- "C" S.W. CORNER JOHN FRYER D.L.C. NO. 57
 FD. 1963 B.L.M. IRON PIPE AND BRASS CAP
 RUSTED 1/2" IRON PIPE SET ALONGSIDE
 24" FIR, N22°W, 15.5' (SCAR VIS.), 1963 B.T.
 24" FIR, S05°E, 37.0' (SCAR VIS.), 1963 B.T.
- "D" WEST N.W. CORNER JOHN FRYER D.L.C. NO. 57
 FD. 1963 B.L.M. IRON PIPE AND BRASS CAP
 24" FIR, N41°E, 37.5' (SCAR VIS.), 1963 B.T.
 22" FIR, S64°E, 25.0' (SCAR VIS.), NO RECORD
- "E" INTERIOR N.W. CORNER JOHN FRYER D.L.C. NO. 57
 FD. 1963 B.L.M. IRON PIPE AND BRASS CAP
 36" FIR, N44°W, 36.3' (SCAR VIS.), 1963 B.T.
 16" MAPLE, S71°E, 9.9' (SCAR VIS.), NO RECORD
- "F" NORTH N.W. CORNER JOHN FRYER D.L.C. NO. 57
 FD. 1963 B.L.M. IRON PIPE AND BRASS CAP
 26" FIR, N65°W, 35.2' (SCAR VIS.), 1963 B.T.
 SET 8" ALDER, N52°E, 7.2' (SCRIBED/METAL WASHER)
- "G" REFERENCE MONUMENT - NORTH LINE D.L.C. NO. 57
 SET 5/8" x 30" IRON PIN WITH YELLOW PLASTIC CAP
 IRON PIN SET 15' EAST OF CENTERLINE OF DOUGLAS
 COUNTY ROAD NO. 67. SET METAL FENCE POST
 BESIDE IRON PIN. NO BEARING TREES SET.

NARRATIVE, THE PURPOSE OF THIS SURVEY IS TO BLAZE AND POST THE WESTERLY LINES OF THE ABEL P. FRYER D.L.C. NO. 47 AND THE WESTERLY LINES OF THE JOHN A. FRYER D.L.C. NO. 57, LYING IN SECTION 9, T22S, R8W, W.M. THE S.W. CORNER OF SECTION 9 AND D.L.C. CORNERS "A", "B", "C", "D", "E", AND "F" WERE FOUND IN THE FIELD AND USED AS CONTROL FOR THIS SURVEY. A CLOSED RANDOM PROPERTY LINE TRAVERSE, USING A WILD T-16 THEODOLITE AND A DI-4L E.D.M. WAS RUN ALONG ALL PROPERTY LINES TO BE BLAZED AND POSTED. OFFSETS WERE COMPUTED FROM THIS RANDOM PROPERTY LINE TRAVERSE TO THE TRUE PROPERTY LINES. PROPERTY LINES WERE MARKED WITH RED PAINTED BLAZES, RED PLASTIC RIBBON AND GREEN METAL FENCE POSTS. REFERENCE MONUMENT "G" WAS SET DUE EAST (DEED CALL) AT AN ARBITRARY DISTANCE OF 769.00 FEET FROM FOUND MONUMENT "F".