




PROPERTY SURVEY:

SECTION 25, T23S, R10W, WM
DOUGLAS COUNTY, OREGON
AUGUST, 1996 (plat corrected 1/22/97)

COUNTY SURVEYORS FILE DATA 1/4
DO NOT REMOVE FROM OFFICE

- ① W-1/4, S25
FOUND 2-1/2" BRASS CAP AND ACCESSORIES
REMONUMENTED BY GREGORY K. MILLER IN
1984 (SURVEY # M97-68).
- ② N-1/4, S25
FOUND 1" IRON PIPE WITH 2 1/2" BRASS CAP
WITNESS CORNER WHICH WAS REMONUMENTED
BY UMPQUA SURVEYING (LS 866) IN 1981.
ACCESSORIES AS DESCRIBED BY G. K. MILLER
IN 1983 (SURVEY # M95-29A)
- ③ S-1/4, S25
FOUND 2-1/2" BRASS CAP AND ACCESSORIES
AS REMONUMENTED BY M. S. MCDOWELL IN 1976
AND ALSO LISTED IN 1983 SURVEY BY G. K. MILLER
(SURVEY # M95-29A)
- ④ E-1/16, S25
FOUND 2-1/2" BRASS CAP AND ACCESSORIES
AS SET BY M. S. MCDOWELL IN 1976
- ⑤ SE CORNER
FOUND 2-1/2" BRASS CAP AND ACCESSORIES
AS REMONUMENTED BY M. S. MCDOWELL IN 1976
AND ALSO LISTED IN 1992 SURVEY BY R. B. WARD
(SURVEY # M113-34B)
- ⑥ S-1/16 S25
FOUND 2-1/2" BRASS CAP AND ACCESSORIES
AS SET BY M. S. MCDOWELL IN 1976
AND ALSO LISTED IN 1992 SURVEY BY R. B. WARD
(SURVEY # M113-34B)
- ⑦ E-1/4 S25
FOUND 3/4" IRON PIPE AND ACCESSORIES AS
LISTED BY R. B. WARD IN 1992.
(SURVEY # M113-34B)

LEGEND:
CORNER FOUND: 
CORNER SET: 
LINE BLAZED: 

NARRATIVE

THIS PLAT AND THE NOTES HEREON ARE A CORRECT AND ARE AN ACCURATE REPRESENTATION OF A SURVEY THAT WAS CONDUCTED BY WEYERHAEUSER COMPANY DURING THE PERIOD JULY-AUGUST, 1996. THE SURVEY WAS PERFORMED TO DETERMINE PROPERTY OWNERSHIP LINES OF THE SE 1/4 OF THE SE 1/4 OF SECTION 25, T 23 S, R 10 W, W.M.. THE PROPERTY LINES INVOLVED WERE LOCATED BY OFFSETS TO TRUE LINE, AND MARKED WITH BLAZES, AND ORANGE PAINT.

THE POSITION FOR THE CENTER OF SECTION 25 WAS CALCULATED BY INTERSECTION USING THE WEST, EAST, NORTH, AND SOUTH, 1/4 CORNERS THAT WERE FOUND AS REPORTED AND ACCEPTED FOR POSITION. THE NORTH QUARTER CORNER WAS PROJECTED USING THE WITNESS CORNER RECORDED IN COUNTY SURVEY M87-80.

THE CORNER POSITION FOR THE SE 1/16 CORNER WAS DETERMINED AS PRESCRIBED THE BLM MANUAL OF SURVEY INSTRUCTIONS 1973 EDITION.

CONTROL FOR THIS SURVEY WAS ESTABLISHED USING A NIKON TOTAL STATION AND TWO DUAL FREQUENCY LEICA GPS RECEIVERS. BEARINGS ARE BASED ON GPS OBSERVATIONS.

FILED

Date: 2-4-97 By: JP

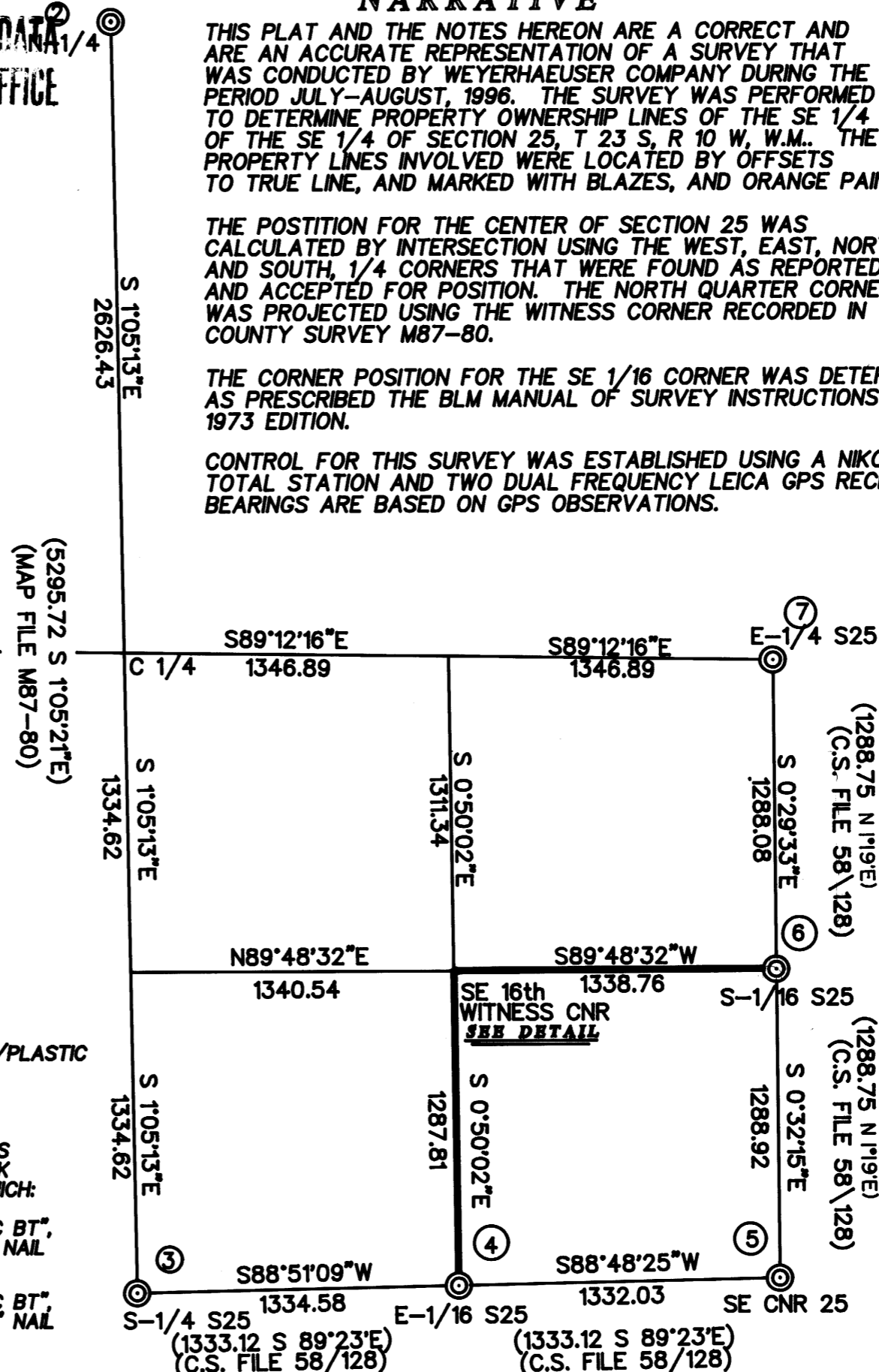
This survey consists of:

Map: M 126-31

Narrative: _____

Corner Rpt: _____

DOUGLAS COUNTY SURVEYOR



DETAIL
SE 16th

SET 3/4" X 30" IRON PIPE W/PLASTIC CAP MARKED "LS 1975" FOR WITNESS CORNER WHICH IS ON LINE (S 0°50'02" E), 24.45 FEET FROM THE TRUE CORNER POSITION WHICH FALLS ON AN UNSTABLE STREAMBANK ALONG LAKE CREEK. FROM WHICH:

12" MYRTLE, SCRIBED "S25 WC BT", BEARS S 16° E, 18.42' TO "W" NAIL SET IN THE ROOT COLLAR.

13" MYRTLE, SCRIBED "S25 WC BT", BEARS S 21° W, 39.83' TO "W" NAIL SET IN THE ROOT COLLAR.



SCALE 1"=600"

REGISTERED PROFESSIONAL LAND SURVEYOR

Tony Hostetter

OREGON
JAN 10, 1982
TONY HOSTETTER
1975

EXPIRES: 6/30/97

MAP FILE M 126-31

MAP FILE M 126-31