



PROPERTY SURVEY FOR MENASHA CORPORATION

LOCATED IN SECTION 12, T. 22 S., R. 9 W., W.M.

NARRATIVE

THE PURPOSE OF THIS SURVEY IS TO ESTABLISH THE PROPERTY LINES AND CORNERS FOR MENASHA CORPORATION IN SECTION 12, TOWNSHIP 22 SOUTH, RANGE 9 WEST, WILLAMETTE MERIDIAN, DOUGLAS COUNTY, OREGON. THE SECTION WAS SUBDIVIDED FOLLOWING THE 1973 BLM MANUAL OF INSTRUCTIONS. CONTROLLING SURVEYS WERE THE GLO SURVEYS BY BYARS IN 1874 AND WORRICK IN 1894, AND THE 1993 BLM SURVEY IN SECTION 13. A NIKON DTM A5 TOTAL STATION WITH DATA COLLECTOR WAS USED, AND ALL CORNERS WERE SURVEYED USING CLOSED LOOP TRAVERSES. BEARINGS ARE BASED ON THE 1993 BLM SURVEY OF THE NORTH LINE OF SECTION 13 (S 89°21'30"W). CONTROLLING CORNERS ARE THOSE SHOWN AS FOUND.

ALL MEASUREMENTS TO BEARING TREES ESTABLISHED THIS SURVEY ARE TO A SPIKE SET IN THE SIDE CENTER OF THE TREE, AND ANGLES WERE MEASURED TO THE CENTER OF THE TREE. A TAG WAS ATTACHED TO THE TREE FACING THE CORNER. THE PROPERTY LINES WERE BLAZED AND PAINTED ORANGE.

THE CORNER TO SECTIONS 1, 2, II & 12 WAS ESTABLISHED BY DOUBLE PROPORTIONATE MEASUREMENT AFTER A DILIGENT SEARCH REVEALED NO EVIDENCE OF EITHER THE BYARS OR WORRICK SURVEYS. WORRICK'S 1894 RETRACEMENT OF THE LINE BETWEEN SECTIONS 2 AND II SHOWS AN ANGLE AT THE QUARTER-SECTION CORNER. THEREFORE, I USED THE METHOD DESCRIBED IN SECTION 5-36 OF THE 1973 MANUAL TO CALCULATE THE PROPORTIONED POSITION FOR THIS CORNER. A DILIGENT SEARCH WAS THEN MADE AT THIS LOCATION, BUT NO EVIDENCE WAS FOUND. A DILIGENT SEARCH WAS MADE FOR THE QUARTER-SECTION CORNER BETWEEN SECTIONS I AND 12, AND ALSO FOR THE QUARTER-SECTION CORNER BETWEEN SECTIONS II AND 12. SINCE NO EVIDENCE WAS FOUND IN EITHER CASE, BOTH THESE CORNERS WERE SET BY SINGLE PROPORTIONATE MEASUREMENT.

NOTE: BEARINGS BASED ON UNFILED 1993 BLM SURVEY.

CORNER TO SECTIONS 2, 3, 10 & II
FOUND 2" I.P. WITH 3 1/2" BLM BRASS CAP,
MARKED "T22S R9W S3 S2 S10 SII 1995"

B.T.'S
OBT, 49° FIR STUMP, HEALED FACE, S 38°W, 22.4'
12" FIR, SCRIBES VISIBLE, N 64°E, 23.4'
13" FIR, SCRIBES VISIBLE, S 53°E, 19.4'
12" FIR, SCRIBES VISIBLE, S 61°W, 18.7'
13" FIR, SCRIBES VISIBLE, N 52°W, 19.9'

HISTORY: ORIGINAL SURVEY BY W.H. BYARS IN 1874.
E.O. WORRICK REESTABLISHED CORNER IN 1894
AFTER FAILING TO FIND BYARS' CORNER. BLM SET
CORNER IN 1995 FROM WORRICK'S SOUTHWEST B.T.
BLM SURVEY NOT YET OFFICIAL.

(S 89°33'E, 37.90 CH.)
S 3 S 2 S 10 S II
S 89°42'30"E 2481.30
(S 86°18'E, 41.75 CH.)
S 2 S I
S 86°25'54"E 2733.01

CORNER TO SECTIONS I, 2, II & 12
SET 1 1/2" IRON PIPE, 30" LONG, WITH
2" BRASS CAP, MARKED "T22S R9W S2
SII S12 1996 LS 934"

B.T.'S
12" FIR, N 45°E, 18.6', SCRIBED "T22S R9W S1 BT"
16" FIR, S 41°E, 33.6', SCRIBED "T22S R9W S12 BT"
10" FIR, S 15°W, 26.2', SCRIBED "T22S R9W SII BT"
13" FIR, N 22°W, 34.5', SCRIBED "T22S R9W S2 BT"
A FOUND 1 1/2" IRON PIPE WITH SCREW-ON CAP, NO
RECORD, BEARS S 61°34'21"W, 73.14'

1/4 SEC. CORNER TO SECTIONS II & 12
SET 1 1/2" IRON PIPE, 30" LONG, WITH
2" BRASS CAP MARKED "T22S R9W 1/4
SII S12 1996 LS 934"

NEW B.T.'S
9" FIR, N 7°E, 18.6', SCRIBED "1/4 S12 BT"
14" FIR, S 60°E, 17.9', SCRIBED "1/4 S12 BT"
8" FIR, S 15°W, 5.8', SCRIBED "1/4 SII BT"
10" FIR, N 32°W, 15.3', SCRIBED "1/4 SII BT"

CORNER TO SECTIONS II, 12, 13 & 14
FOUND 1 1/2" IRON WATER PIPE WITH 2" SCREW-ON
IRON CAP, MKD. "II,12,13,14", 12" ABOVE GROUND

B.T.'S
OBT, OAK WINDFALL, NO SCRIBES VISIBLE,
S 84°E, 99.0' (REC. S 85°E, 150 LKS.)
21" FIR, CHOPPED "X", S 39°E, 4.8'
18" FIR, CHOPPED "X", S 23°W, 30.0'
16" FIR, SCRIBES VISIBLE, N 51°E, 12.8'
16" FIR, SCRIBES VISIBLE, N 32°W, 26.5'

1/4 SEC. CORNER TO SECTIONS I & 2
FOUND 3/4" IRON PIPE WITH PIPE CAP (NO RECORD)

ORIG. B.T.'S
12" ROTTED FIR STUMP WITH SCRIBES "BT" VISIBLE, N 21 1/2° E, 20.1'
(REC. N 21°30' E, 32 LKS.)
36" ROTTED FIR STUMP WITH SCRIBE "B" VISIBLE, N 54° W, 41.9'
(REC. N 54° W, 61 LKS.)

SET 2" IRON PIPE, 30" LONG, OVER FOUND PIPE, WITH 2" BRASS CAP
MARKED "T22S R9W 1/4 S2 S1 1996 LS 934"

NEW B.T.'S
11" FIR, N 81°E, 18.8', SCRIBED "1/4 S1 BT"
14" FIR, S 19°E, 16.1', SCRIBED "1/4 S1 BT"
9" FIR, S 75°W, 19.9', SCRIBED "1/4 S2 BT"
10" FIR, N 31°W, 6.4', SCRIBED "1/4 S2 BT"

1/4 SEC. CORNER TO SECTIONS I & 12
SET 1 1/2" IRON PIPE, 30" LONG, WITH 2" BRASS
CAP, MARKED "T22S R9W 1/4 S1 S12 1996 LS934"

NEW B.T.'S
13" FIR, N 62°E, 21.2', SCRIBED "1/4 S1 BT"
11" FIR, S 29°E, 31.1', SCRIBED "1/4 S12 BT"
14" FIR, S 66°W, 23.4', SCRIBED "1/4 S12 BT"
17" FIR, N 17°W, 19.8', SCRIBED "1/4 S1 BT"
COR. SET 8" BELOW SURFACE OF GRAVEL ROAD.
A FOUND 1 1/2" IRON PIPE, NO RECORD, BEARS
N 81°24'13"W, 78.81'

COUNTY SURVEYORS FILE DATA
DO NOT REMOVE FROM OFFICE



DECEMBER, 1996
SCALE: 1" = 1000'

FILED
Date: 1-8-97 By: J.C.
This survey consists of:
Map: M 126-23
Narrative:
Corner Apt: _____

DOUGLAS COUNTY
SURVEYOR
J.C.

MAP FILE M126-23

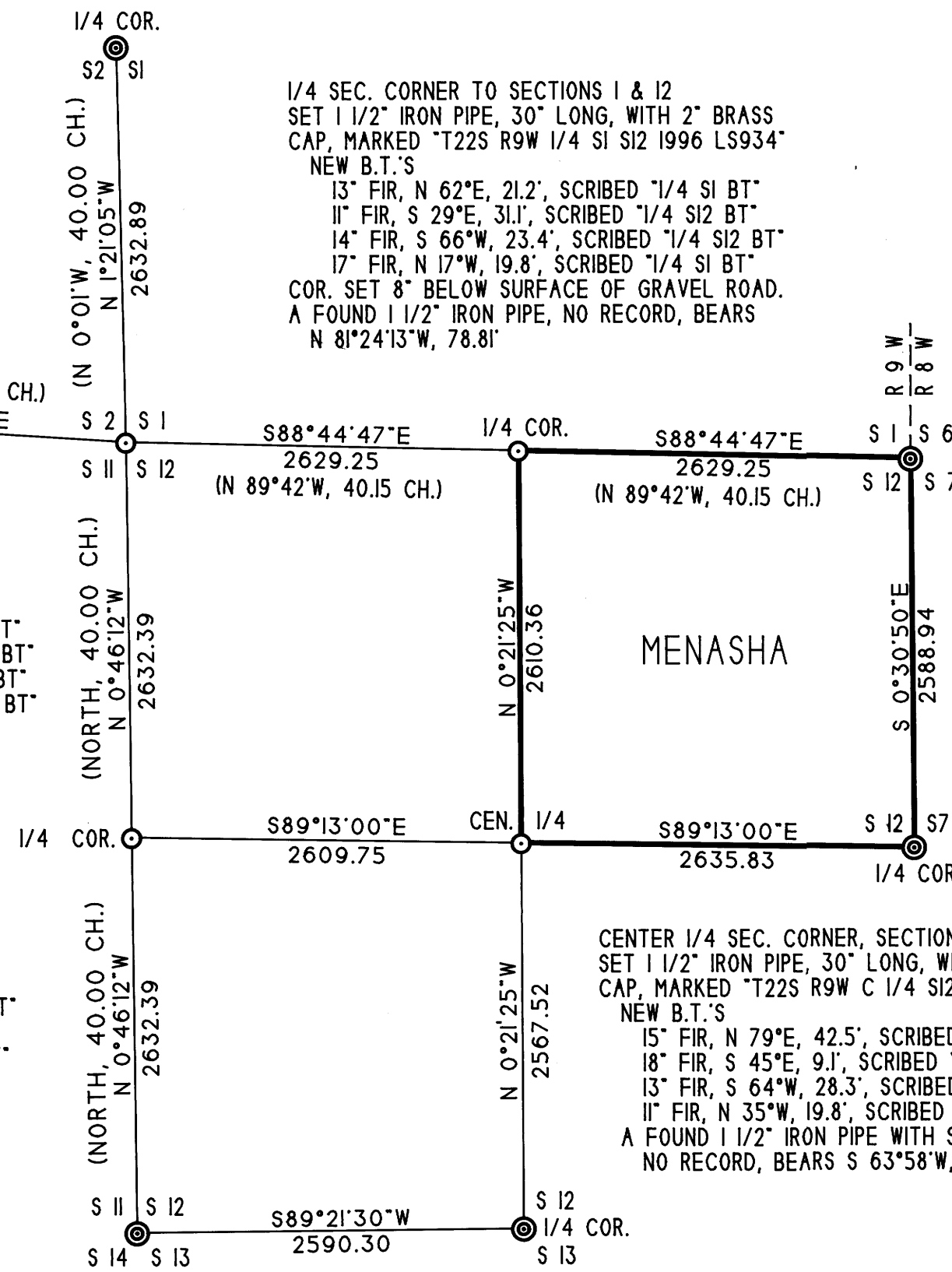
REGISTERED
PROFESSIONAL
LAND SURVEYOR

Victor M. McLind
VICTOR M. McLIND
OREGON
JULY 17 1970
934

SURVEYED BY: VICTOR McLIND
MENASHA CORPORATION
P. O. BOX 588
NORTH BEND, OR 97459

LICENSE RENEWAL 12-31-96

MAP FILE M126-23



CORNER TO SECTIONS I, 6, 7 & 12
FOUND 1 1/2" IRON PIPE WITH 2 1/2" CO. SURVEYOR'S
BRASS CAP, MKD. "T22S R9 R8 S1 S6 S12 S7 1963"

OLD B.T.'S
48" FIR SNAG, OLD SCAR, NEWER BARK SCRIBE, N 45°W, 6.6'
46" FIR SNAG, NO SCRIBES VISIBLE, N 38°E, 17.7'
14" ROTTED FIR STUMP, NO SCRIBES, S 41°W, 27.6'
MARKED 2 NEW B.T.'S
12" FIR, S 34°E, 15.1', SCRIBED "T22S R8W S7 BT"
9" FIR, S 32°W, 13.1', SCRIBED "T22S R9W S12 BT"
C.S. FILE 52/14

1/4 SEC. CORNER TO SECTIONS 12 & 7
FOUND ROTTED REMAINS OF COR. TREE
FOUND CO. SURVEYOR'S WITNESS COR., A 1 1/2" I.P.
WITH 2 1/2" BR. CAP, MKD. "T22S WC R9W 1/4 S12
S7 R8W CORNER IS 6' SOUTH 1963"

FOUND B.T.'S
25" ROTTED FIR STUMP, SCRIBES "WC 1/4 S12
CSBT", N 39°W, 18.2"
17" ROTTED STUMP, SCRIBES "WC 1/4 S7 CSBT"
ON WINDFALL, S 85°E, 31.0"
9" FIR, SCRIBES VISIBLE, S 11°W, 9.6'
8" FIR, SCRIBES VISIBLE, S 87°W, 6.9'
NEW B.T.'S
11" FIR, SCRIBED "WC 1/4 S7 BT", S 27°E, 14.0'
8" FIR, SCRIBED "WC 1/4 S7 BT", N 83°E, 28.5'
NOTE: ALL BEARINGS AND DISTANCES ARE FROM
THE WITNESS CORNER. TRUE CORNER WAS
CALCULATED AT SOUTH, 6.00' FROM W.C.
C.S. FILE 52/14, M 113-60

CENTER 1/4 SEC. CORNER, SECTION 12
SET 1 1/2" IRON PIPE, 30" LONG, WITH 2" BRASS
CAP, MARKED "T22S R9W C 1/4 S12 1996 LS934"

NEW B.T.'S
15" FIR, N 79°E, 42.5', SCRIBED "C 1/4 S12 BT"
18" FIR, S 45°E, 9.1', SCRIBED "C 1/4 S12 BT"
13" FIR, S 64°W, 28.3', SCRIBED "C 1/4 S12 BT"
11" FIR, N 35°W, 19.8', SCRIBED "C 1/4 S12 BT"
A FOUND 1 1/2" IRON PIPE WITH SCREW-ON CAP,
NO RECORD, BEARS S 63°58'W, 13.37'

1/4 SEC. CORNER TO SECTIONS 12 & 13
FOUND 2 1/2" IRON PIPE WITH 3 1/4" BLM
BR. CAP, MKD. "T22S R9W 1/4 S12 S13 1993"

B.T.'S
24" FIR, SCRIBES VISIBLE, S 11°W, 36.5'
21" FIR, SCRIBES VISIBLE, N 41°W, 15.0'
NOTE: BLM SURVEY IS NOT YET OFFICIAL.
I ACCEPT THIS CORNER PENDING APPROVAL
OF BLM SURVEY.

LEGEND

SURVEYED LINES
PAINTED & BLAZED LINES
FOUND CORNERS
CORNERS SET
CALCULATED CORNERS
RECORD DATA

