

LONE ROCK TIMBER CO.

PO BOX 1127 ROSEBURG OREGON 97470 DATE: NOV. 1996
SECTION 35, TOWNSHIP 22 SOUTH, RANGE 5 WEST, W.M. DOUGLAS COUNTY, OREGON
JUNIPER PROPERTIES TRACT J22 - 5 - 35 SCALE 1" = 500'

FILED

Date: 1-8-97 By: JC
This survey consists of:
Map: M126-21
Narrative:
Corner Fpt:

DOUGLAS COUNTY SURVEYOR

MAP FILE M126-21

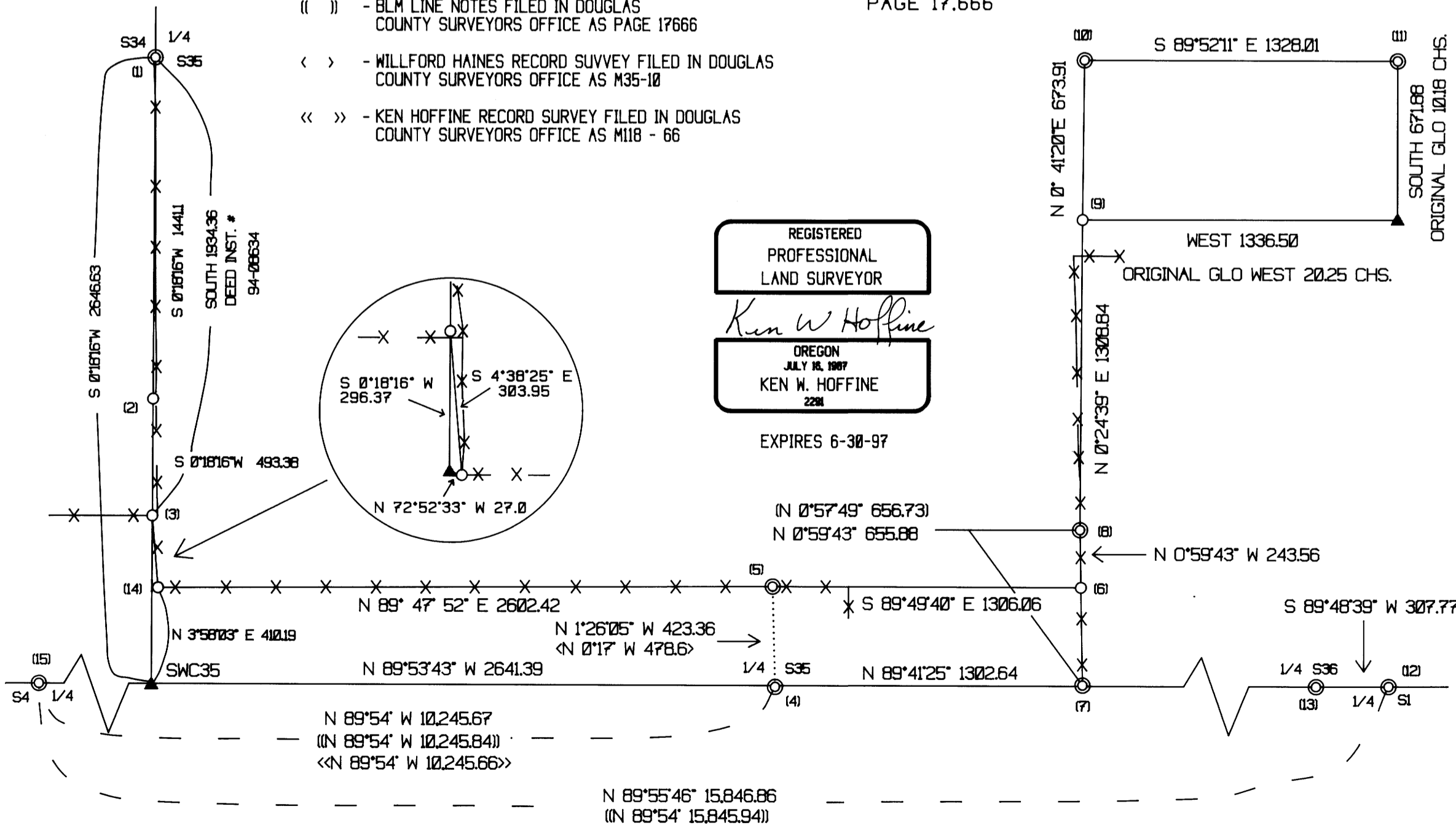
NARRATIVE

THIS SURVEY WAS CONDUCTED TO ESTABLISH PROPERTY CORNERS AND PROPERTY LINES FOR TIMBER CUTTING PURPOSES. WE INITIATED THIS SURVEY AT THE WEST 1/4 OF SECTION 35, A DOUGLAS COUNTY BCIP SET FROM ORIGINAL EVIDENCE, TRAVERSING SOUTHERLY ALONG EXISTING FENCE LINES TO A POINT NEAR THE SOUTHWEST CORNER OF SECTION 35 FOR WHICH NO EVIDENCE REMAINS OF THE ORIGINAL CORNER. WE CLOSED OUR LOOP BACK TO THE WEST 1/4 AND BEGAN A NEW TRAVERSE EASTERLY TO THE SOUTH 1/4 OF SECTION 35 HITTING CONTROL POINTS WE ESTABLISHED IN SURVEY M118-66 TO TIE IN COORDINATES OF THE NORTH 1/4 OF SECTION 4 INTO OUR SURVEY. WE CONTINUE OUR TRAVERSE NORTHERLY TO A 5/8" IRON ROD IN FENCE LINE AS SHOWN ON MAP M35-10, THEN EASTERLY TO 5/8" IRON ROD PROPERTY CORNERS AS SHOWN ON MAP 44-44. WE THEN TRAVERSED EASTERLY TO THE SOUTH 1/4 OF SECTION 35 AND THE NORTH 1/4 OF SECTION 1 WHICH ARE DOUGLAS COUNTY BCIP'S SET FROM ORIGINAL EVIDENCE. WE THEN CLOSE OUR SURVEY BACK EASTERLY TO OUR TRAVERSE POINT NEAR THE SOUTHWEST CORNER OF SECTION 35 AND WE MAKE A CLOSED TRAVERSE TO THE EAST 1/4 OF SECTION 35, A COUNTY CAP SET FROM ORIGINAL EVIDENCE AND THE CENTER EAST 1/16 A 5/8" IRON ROD AS SHOWN ON MAP 35-10. BASED ON OUR CALCULATIONS WE SET A 5/8" IRON ROD (3) AT DEED DISTANCE FROM THE WEST 1/4 OF SECTION 35 ON THE SECTION LINE BETWEEN SECTION 34 AND SECTION 35 WITH A REFERENCE 5/8" IRON ROD (2) NORTH ON LINE 493.38 FEET. AS PART OF A PENDING BOUNDARY LINE AGREEMENT WE SET A 5/8" IRON ROD (14) AT AN EXISTING FENCE CORNER AS SHOWN S4 38'25"E, 303.98 FEET. WE THEN SET A 5/8" IRON ROD (6) ON LINE BETWEEN EXISTING IRON RODS 415.00 FEET (DEED 6.3 CHAINS INST. # 89-18044 PARCEL (12A) FROM THE TRUE SECTION LINE BETWEEN STANDARD CORNERS (15) AND (12). WE SET THE NORTHWEST CORNER OF DLC #41 (NO EVIDENCE OF ORIGINAL CORNER) FROM ORIGINAL CALLS TO THE EAST 1/4 OF SECTION 35 PER INSTRUCTIONS FROM BUREAU OF LAND MANAGEMENT CADASTRAL SURVEYOR. THIS SURVEY WAS DONE WITH A LIETZ SET 2 AND A NIKON DTM-A10 TOTAL STATIONS WITH GARY ANGIOLET AND GERALD RAGON ASSISTING ME.

LEGEND:

- ⊙ - FOUND MONUMENT
- - SET 5/8" BY 40" IRON ROD WITH ALUMINUM CAP
- ▲ - COMPUTED NOT SET
- - LINES FLAGGED, BLAZED & TAGGED
- - PROJECTED LINES
- - CALCULATED PROJECTED LINES
- () - VICTOR McLIND RECORD SURVEY FILED IN DOUGLAS COUNTY SURVEYORS OFFICE AS M44-44
- (()) - BLM LINE NOTES FILED IN DOUGLAS COUNTY SURVEYORS OFFICE AS PAGE 17666
- < > - WILLFORD HAINES RECORD SURVEY FILED IN DOUGLAS COUNTY SURVEYORS OFFICE AS M35-10
- << >> - KEN HOFFINE RECORD SURVEY FILED IN DOUGLAS COUNTY SURVEYORS OFFICE AS M118 - 66

BASIS OF BEARING
BLM LINE NOTES
PAGE 17.666



CORNER INFORMATION

THE FOLLOWING IS A RECORD OF ALL CORNERS FOUND OR SET DURING THE COURSE OF THIS SURVEY

- 1) 1/4 CORNER BETWEEN SECTIONS 34 AND 35
FOUND DOUGLAS COUNTY SURVEYORS OFFICE BRASS CAP IN GOOD CONDITION SET 1958 RENEWAL #44.
-- 9" OAK BEARS S45°W, 16.8 FEET (RECORD S48°W, NO DISTANCE), WELL HEALED FACE
-- 10" OAK BEARS N16°E, 16.8 FEET (RECORD N10°E, 17.82 FEET), WELL HEALED FACE
-- 19" DOUGLAS FIR BEARS S4 1/4°W, 9.3 FEET (RECORD S3°W, 10.0 FEET), WELL HEALED FACE AND BLM TAG
-- 21" DOUGLAS FIR BEARS N89 3/4°W, 6.7 FEET (RECORD N86°W, 7.0 FEET), WELL HEALED FACE, FENCE WRAPS AROUND TREE AND RUNS WEST AND SOUTH FROM TREE
CORNER SITS ON VERY STEEP SOUTH SLOPE APPROXIMATELY 70 FEET SOUTH OF RIDGE TOP.
- 2) IRON ROD ON LINE
SET 5/8" X 40" IRON ROD WITH YELLOW CAP MARKED LONE ROCK TIMBER PLS 2291 AT GROUND LEVEL.
-- 14" DOUGLAS FIR BEARS S23 1/4°E, 51.7 FEET, WE SCRIBE B.T. AND TAG TREE
CORNER SITS IN FIELD APPROXIMATELY 7 1/2 FEET WEST OF FENCE LINE.
- 3) PROPERTY CORNER
SET 5/8" X 40" IRON ROD WITH YELLOW PLASTIC CAP MARKED LONE ROCK TIMBER PLS 2291 AT GROUND LEVEL.
-- 30" DOUGLAS FIR BEARS N72 1/4°E, 211.4 FEET, WE SCRIBE B.T. AND TAG TREE
CORNER SITS IN FIELD 21.5 FEET WEST AND 13.5 FEET NORTH OF FENCE LINE.
- 4) SOUTH 1/4 OF SECTION 35
FOUND BLM BRASS CAP WITH 1 1/2" IRON PIPE ALONG SIDE.
-- 9" OAK BEARS N62°E, 30.1 FEET (RECORD N69°E, 31.0 FEET), WELL HEALED FACE AND BLM TAG
-- 6" OAK BEARS N23 1/4°W, 39.7 FEET (RECORD N23°W, 40.6 FEET), WELL HEALED FACE AND BLM TAG
-- 14" FIR SNAG BEARS N85 1/2°W, 26.6 FEET (RECORD N87°W, 27.0 FEET), TWO BLM TAGS
CORNER SITS ON WEST FACING SLOPE, A FENCE BEARS SOUTH 4.5 FEET, AND A DRAW BEARS WEST APPROXIMATELY 100 FT.
- 5) IRON ROD FOR DEED DESCRIPTION
FOUND 5/8" IRON ROD 0.8 FEET ABOVE GROUND, FROM HAINES MAP M35-10
-- 8" OAK TREE BEARS S55°W, 11.0 FEET, WE SCRIBE B.T. AND TAG TREE
CORNER LIES 2.0 FEET SOUTH OF FENCE LINE AND APPROXIMATELY 40 FEET WEST OF DRAW.
- 6) PROPERTY CORNER
SET 5/8" X 40" IRON ROD WITH YELLOW PLASTIC CAP MARKED LONE ROCK TIMBER PLS 2291.
-- 8" OAK BEARS S66°W, 10.95 FEET WE SCRIBE B.T. AND TAG TREE
CORNER LIES IN NORTH SOUTH FENCE LINE 0.4 FEET NORTHWEST OF WOODEN FENCE POST ON A 30% SOUTHWEST SLOPE.
- 7) PROPERTY CORNER
FOUND 5/8" IRON ROD SET BY VICTOR McLIND, DOUGLAS COUNTY MAP M44-44 IN FENCE LINE AT FENCE JUNCTION.
- 8) PROPERTY CORNER
FOUND 5/8" IRON ROD SET BY VICTOR McLIND, DOUGLAS COUNTY MAP M44-44 IN FENCE LINE AT FENCE JUNCTION.
- 9) NORTHWEST CORNER DLC #41
SET 2 1/2" ALUMINUM CAP ON 5/8" X 40" IRON ROD MARKED T22S R5W S35 DLC #41 1996 PLS 2291.
-- 16" DOUGLAS FIR BEARS N50°E, 54.1 FEET, WE SCRIBE N.W. COR DLC #41 B.T.
-- 19" DOUGLAS FIR BEARS S34°E, 48.70 FEET, WE SCRIBE N.W. COR DLC #41 B.T.
-- 17" DOUGLAS FIR BEARS S703/4°W, 31.9 FEET WE SCRIBE N.W. COR DLC #41 B.T., AND TAG TREE
-- 32" DOUGLAS FIR BEARS N20°W, 30.8 FEET WE SCRIBE N.W. COR DLC #41 B.T., AND TAG TREE
CORNER LIES ON GENTLE BROKEN GROUND AT TOE OF STEEP SIDE SLOPE TO THE WEST AND NORTH.
- 10) CENTER EAST 1/16 CORNER FOR SECTION 35
FOUND 5/8" IRON ROD 2.0 FEET ABOVE GROUND SET BY HAINES.
-- 40" DOUGLAS FIR BEARS S28 1/4°E, 84.6 FEET (RECORD S28°E, 85.5 FEET), WELL HEALED FACE AND B.T. TAG
-- 14" DOUGLAS FIR BEARS S66°W, 72.0 FEET (RECORD S66°W, 72.7 FEET), WELL HEALED FACE AND B.T. TAG
-- 24" MAPLE BEARS S65°E, 2.2 FEET, LRT TAG (NO RECORD)
CORNER LIES ON EAST FACING SLOPE.
- 11) EAST 1/4 CORNER OF SECTION 35
FOUND 2 1/2" DOUGLAS COUNTY BRASS CAP 0.5 FEET ABOVE GROUND.
-- 9" DOUGLAS FIR BEARS N80°E, 24.0 FEET AS PER RECORD, WELL HEALED FACE AND B.T. TAG
-- 16" DOUGLAS FIR BEARS S18°E, 8.4 FEET AS PER RECORD, WELL HEALED FACE AND B.T. TAG
-- FENCE CORNER BEARS S49°E, 1.7 FEET
CORNER LIES ON SMALL FLAT BENCH ON EAST SLOPE APPROXIMATELY 200 FEET WEST OF SOUTH FLOWING CREEK. A FENCE LINE RUNS EAST AND SOUTH FROM CORNER.
- 12) NORTH 1/4 CORNER OF SECTION 1 ONLY
FOUND DOUGLAS COUNTY BRASS CAP 1.0 FEET ABOVE GROUND.
-- 14" DOUGLAS FIR BEARS S82 1/2°E, 57.8 FEET (RECORD S83 3/4°E, 57.6 FEET), WELL HEALED FACE AND B.T. TAG, WE PUT P.K. NAIL IN FACE
-- 15" DOUGLAS FIR BEARS S13°W, 40.5 FEET (RECORD S12°W, 40.6 FEET), WELL HEALED FACE AND B.T. TAG
-- 13" OAK BEARS S35 1/4°W, 8.4 FEET (RECORD S35°W, 6.9 FEET), WELL HEALED FACE AND 2 B.T. TAGS
-- IRON BAR BEAR S5 3/4°E, 1.8 FEET AS PER RECORD
CORNER SITS ON NORTHWEST FACING SLOPE IN DOWN FENCE LINE.
- 13) SOUTH 1/4 CORNER OF SECTION 35 ONLY
FOUND DOUGLAS COUNTY BRASS CAP 0.2 FEET ABOVE GROUND.
-- 24" HIGH DOUGLAS FIR STUMP BEARS N9°E, 17.7 FEET (RECORD N10°E, 17.5 FEET), WELL HEALED SCAR AND BLM
-- 12" DOUGLAS FIR BEARS S82°W, 23.4 FEET AS PER RECORD COUNTY TAG
-- 41" DOUGLAS FIR SNAG BEARS N60°W, 1.9 FEET TO FACE (RECORD DIST. 2.6 FEET TO FACE), WELL HEALED FACE AND BLM TAG
-- 23" HIGH DOUGLAS FIR STUMP BEARS N32°W, 26.1 FEET (RECORD N33°W, 26.1 FEET), WELL HEALED SCAR AND BLM CORNER IS IN RECENTLY LOGGED GROUND WITH HEAVY BLACKBERRY ON 40% NORTH FACING SLOPE.
- 14) PROPERTY CORNER
SET 5/8" X 40" IRON ROD WITH PLASTIC YELLOW CAP MARKED LONE ROCK TIMBER PLS 2291.
SET CORNER ON WEST SIDE OF CORNER POST FOR AN EAST-WEST AND NORTH-SOUTH FENCE LINE. CORNER IS APPROX. S72°E, 300.0 FEET FROM RED HOUSE.
- 15) NORTH 1/4 CORNER OF SECTION 4 ONLY
FOUND BLM ALUMINUM CAP IN GOOD CONDITION.
-- 9" DOUGLAS FIR HIGH STUMP BEARS S35°E, 69.5 FEET WELL HEALED SCAR AND BLM TAG
-- 10" CEDAR S80°W, 58.0 FEET DESTROYED BY LOGGING
-- 11" CEDAR BEARS S30°W, 29.6 FEET, LRT TAG
CORNER LIES ON SOUTHWEST SLOPE, A SOUTH FLOWING CREEK BEARS SOUTH 10 FEET, AN OLD NORTH-SOUTH FENCE LINE BEARS EAST 10 FEET.

MAP FILE M126-21