

BOUNDARY LINE ADJUSTMENT SURVEY
LOCATED IN THE N 1/2 OF SECTION 13 T.21 S.. R.12 W.. W.M.
DOUGLAS COUNTY, OREGON

PREPARED FOR:

PORT BLAKELY TREE FARMS
500 UNION ST. SUITE 830
SEATTLE, WASHINGTON 98101
(206) 624 - 5810

GARETH AND SHARON MAST
540 BLUE HERON LANE
REEDSPORT, OR. 97467
(503) 271 - 4222

PREPARED BY:

CLYDE F. MULKINS
TIMBER CRUISING & ENGINEERING
P.O. BOX 750
COOS BAY, OR. 97420

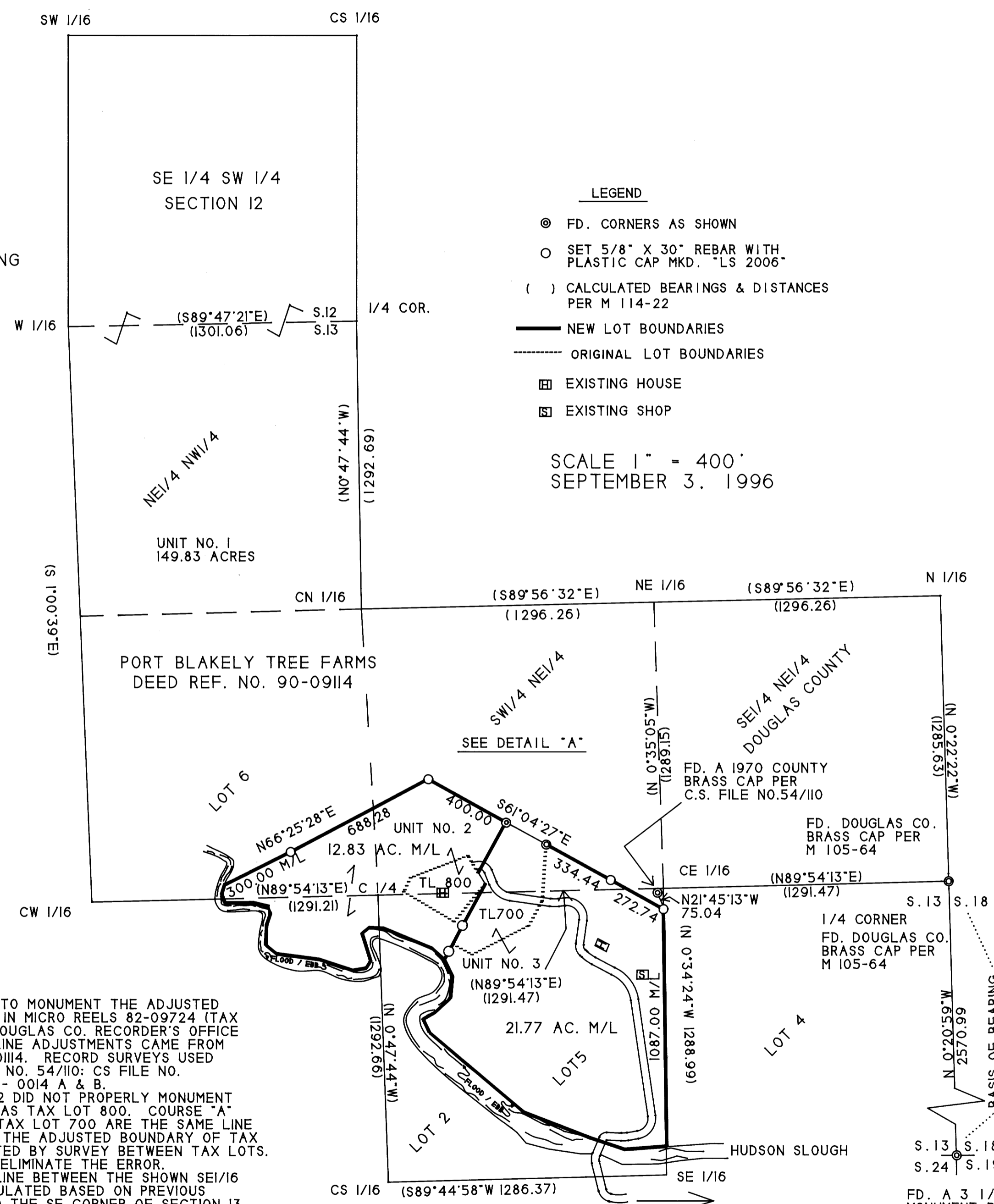
P.D. FILE 96 - 381

REGISTERED PROFESSIONAL LAND SURVEYOR

OREGON JULY 16, 1982
CLYDE F. MULKINS
2006

EXPIRES 12-31-96

BASIS OF BEARING - ASSUMED PER M114-22 (SOLAR OBSERVATION)



- LEGEND
- FD. CORNERS AS SHOWN
- SET 5/8" X 30" REBAR WITH PLASTIC CAP MKD. "LS 2006"
- CALCULATED BEARINGS & DISTANCES PER M 114-22
- NEW LOT BOUNDARIES
- ORIGINAL LOT BOUNDARIES
- EXISTING HOUSE
- EXISTING SHOP

SCALE 1" = 400'
SEPTEMBER 3, 1996

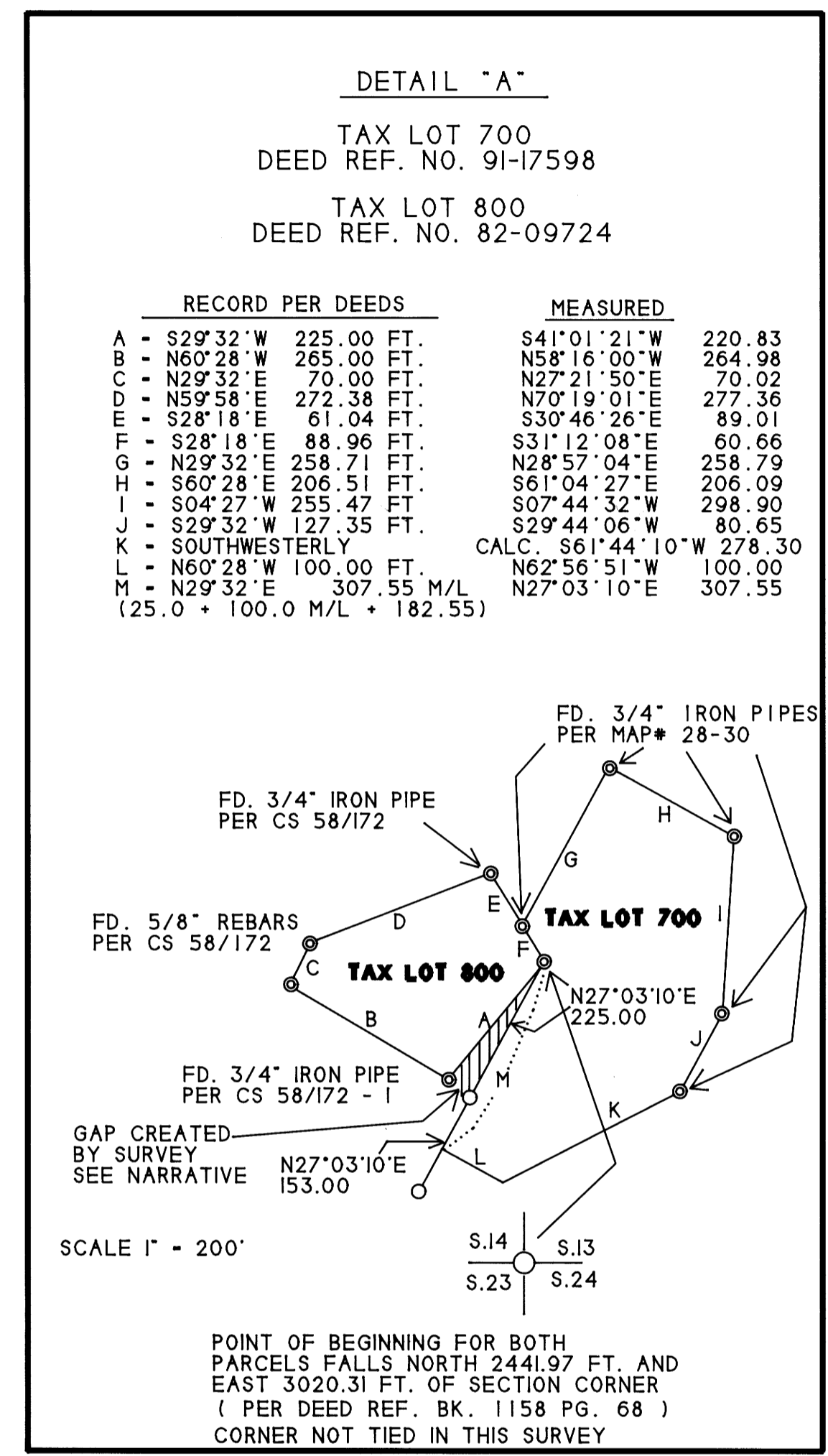


Table with columns: RECORD PER DEEDS, MEASURED. Lists bearings and distances for courses A through M.

SCALE 1" = 200'

POINT OF BEGINNING FOR BOTH PARCELS FALLS NORTH 2441.97 FT. AND EAST 3020.31 FT. OF SECTION CORNER (PER DEED REF. BK. 1158 PG. 68) CORNER NOT TIED IN THIS SURVEY

Keith L. Cubic 12/17/96
KEITH L. CUBIC
DOUGLAS COUNTY PLANNING DIRECTOR

NARRATIVE

THE PURPOSE OF THIS SURVEY WAS TO MONUMENT THE ADJUSTED BOUNDARIES OF TWO PARCELS DESCRIBED IN MICRO REELS 82-09724 (TAX LOT 800) AND 91-17598 (TAX LOT 700) DOUGLAS CO. RECORDER'S OFFICE FILES. THE LAND FOR BOTH BOUNDARY LINE ADJUSTMENTS CAME FROM PROPERTY DESCRIBED IN MICRO REEL 90-01114. RECORD SURVEYS USED FOR THIS SURVEY WERE: M28-30; CS FILE NO. 54/110; CS FILE NO. 58/172; M105-64; M118-62; PARTITION 1996 - 0014 A & B. THE SURVEY PER CS FILE NO. 58/172 DID NOT PROPERLY MONUMENT THE BOUNDARIES OF THE PARCEL SHOWN AS TAX LOT 800. COURSE "A" PER TAX LOT 800 AND COURSE "M" PER TAX LOT 700 ARE THE SAME LINE BY RECORD DEEDS. THE SHOWN AREA IN THE ADJUSTED BOUNDARY OF TAX LOT 800 INCLUDES THE GAP AREA CREATED BY SURVEY BETWEEN TAX LOTS. THIS IS A PRACTICAL SOLUTION TO HELP ELIMINATE THE ERROR. THE CORNER ESTABLISHED ON THE LINE BETWEEN THE SHOWN SE 1/4 AND CE 1/16 CORNER POSITIONS WAS CALCULATED BASED ON PREVIOUS TRAVERSE TIES TO THE E 1/4 CORNER AND THE SE CORNER OF SECTION 13. AND SURVEY PER M118-62. THE FOUND CORNER NEAR THE CE 1/16 CORNER POSITION ESTABLISHED PER C.S. FILE NO. 54/110 IS A PROPERTY CORNER BY AGREEMENT EFFECTING THE BOUNDARIES OF DOUGLAS COUNTY OWNERSHIP LOCATED IN THE SE 1/4 NE 1/4. ITS EFFECT ON THE BOUNDARIES OF GOV'T LOT 5 AND THE SW 1/4 NE 1/4 IS LIMITED TO ITS OVERLAPS OR GAPS WITH GOV'T PLAT LINES. ASSISTING ME WITH THIS SURVEY WERE TROY RAMBO AND RANDY MADDEN. THE FIELD WORK WAS PERFORMED BETWEEN AUGUST 12, 1994 AND AUGUST 13, 1996 (2 YEARS).

TO LOWER SMITH RIVER COUNTY ROAD
ACCESS PER RECORDED EASEMENTS NO. 95-04474, NO. 95-04476, NO. 95-04477, AND 95-21376.

COUNTY SURVEYORS FILE DATA DO NOT REMOVE FROM OFFICE

MAP FILE M126-16

MAP FILE M126-16