

BOUNDARY LINE SURVEY LOCATED ALONG THE  
 EASTERLY RIGHT-OF-WAY OF HIGHWAY 101 IN  
 SECTIONS 15 AND 16, T.21 S., R.12 W., W.M.  
 DOUGLAS COUNTY, OREGON

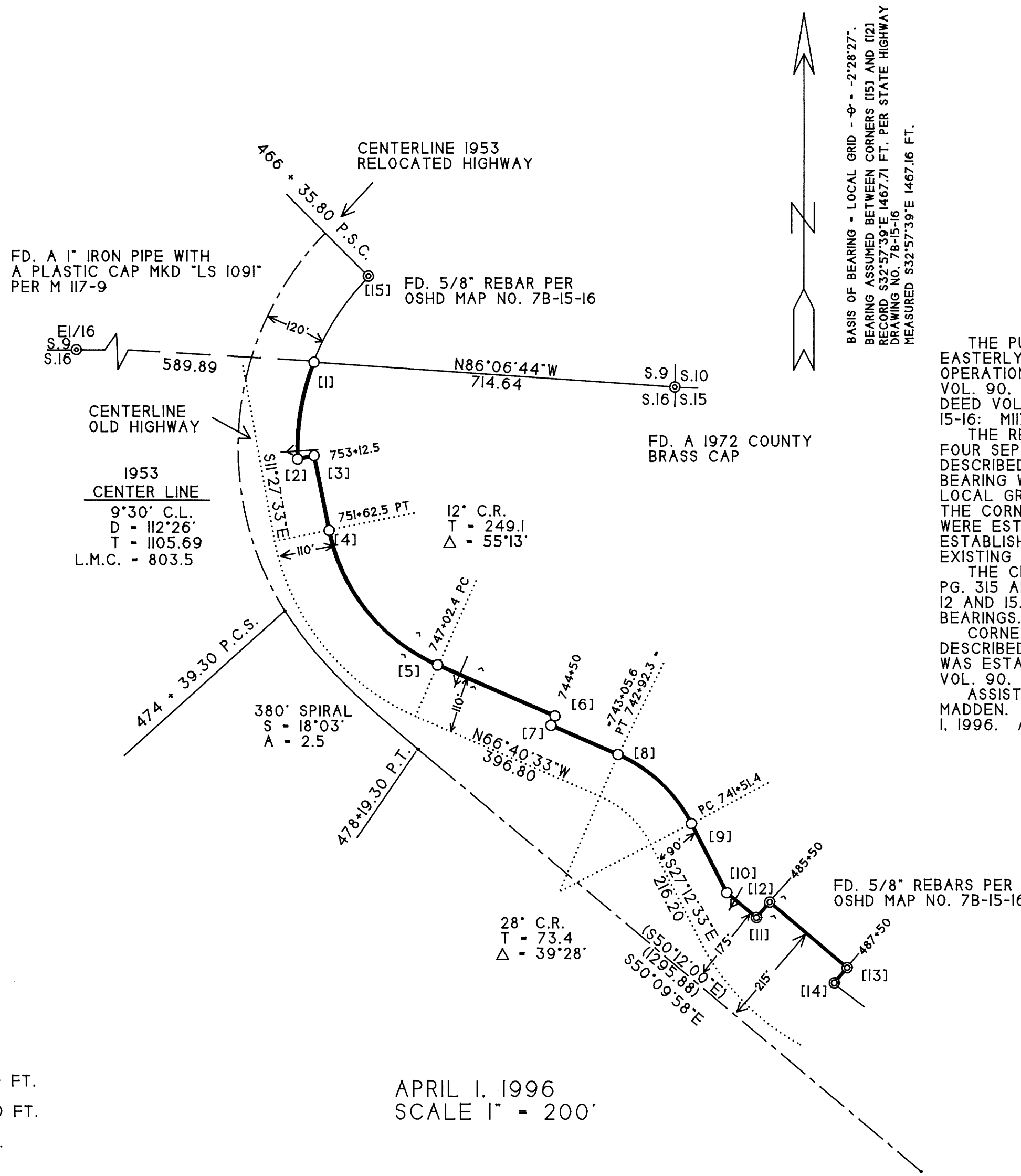
SURVEY FOR:  
 IP TIMBERLANDS OPERATING CO., LTD.  
 711 PORT DOCK ROAD  
 REEDSPORT, OR. 97467

SURVEY BY:  
 CLYDE F. MULKINS  
 TIMBER CRUISING & ENGINEERING  
 P.O. BOX 750  
 COOS BAY, OR. 97420



COUNTY SURVEYORS FILE DATA  
 DO NOT REMOVE FROM OFFICE

MAP FILE M125-9



BASIS OF BEARING - LOCAL GRID -  $\phi$  -  $-2^{\circ}28'27''$ .  
 BEARING ASSUMED BETWEEN CORNERS [15] AND [12]  
 RECORD S32°57'39"E 1467.71 FT. PER STATE HIGHWAY  
 DRAWING NO. 7B-15-16  
 MEASURED S32°57'39"E 1467.16 FT.

NARRATIVE

THE PURPOSE OF THIS SURVEY WAS TO ESTABLISH A PORTION OF THE EASTERLY BOUNDARY OF HIGHWAY "101" FOR FOREST MANAGEMENT OPERATIONS, AS SHOWN. CONTROL FOR THIS SURVEY IS BASED ON: DEED VOL. 90, PG. 209; DEED VOL. 99, PG. 540; DEED VOL. 224, PG. 315; DEED VOL. 230, PG. 838; STATE HIGHWAY DRAWINGS 4B-26-2 AND 7B-15-16; M117-9; CORNER RENEWAL 34, T.21 S., R.12 W.

THE RE-ESTABLISHED HIGHWAY BOUNDARY AS SHOWN WAS CREATED IN FOUR SEPARATE DEEDS. THE ORIGINAL DEED PER VOL. 90 PG. 209 DESCRIBED A CENTERLINE WITH VARYING RIGHT-OF-WAY WIDTHS. RECORD BEARING WAS FOUND TO BE TRUE. RECORD BEARINGS WERE ROTATED TO LOCAL GRID. THE CENTERLINE WAS RE-ESTABLISHED USING DEED CALLS TO THE CORNER OF SECTIONS 9, 10, 15, AND 16. CORNERS 7, 8, AND 9 WERE ESTABLISHED PER RECORD. CORNERS 3, 4, 5, AND 6 WERE ESTABLISHED PER VOL. 99, PG. 540 WHICH ADDED WIDTH FROM THE EXISTING HIGHWAY CENTERLINE.

THE CENTERLINE OF THE PRESENT HIGHWAY DESCRIBED IN VOL. 224, PG. 315 AND VOL. 230, PG. 838 WAS LOCATED BASED ON FOUND CORNERS 12 AND 15. RECORD BEARINGS WERE ROTATED 0°02'02" RIGHT TO PLAT BEARINGS.

CORNER 2 WAS ESTABLISHED BY INTERSECTING HIGHWAY BOUNDARIES DESCRIBED PER VOL. 99, PG. 540 AND VOL. 224, PG. 315. CORNER 10 WAS ESTABLISHED BY INTERSECTING HIGHWAY BOUNDARIES DESCRIBED PER VOL. 90, PG. 209 AND VOL. 230, PG. 838.

ASSISTING ME WITH THIS SURVEY WERE TROY RAMBO AND RANDY MADDEN. THE FIELD WORK WAS PERFORMED BETWEEN MARCH 8 AND APRIL 1, 1996. A TOPCON GTS-301 TOTAL STATION WAS USED FOR TRAVERSING.

LEGEND

- ⊙ FD. CORNERS AS SHOWN
- SET 5/8" X 30" REBAR WITH PLASTIC CAP MKD. "LS 2006"
- LINE FLAGGED AND BLAZED
- [ ] CORNER REF. NO.
- ← CREEK / DRAW
- <<< RIDGES
- - - CENTERLINE RELOCATED HIGHWAY
- ..... CENTERLINE OLD HIGHWAY
- ( ) RECORD BEARING & DISTANCE PER STATE HIGHWAY DRAWING NO. 7B-15-16

CORNER NOTES

- CORNER [1]: 20" DF SCRIBED "R/W BT" BEARS S02°W, 37.8 FT.
- CORNER [2]: 12" ALDER BARK SCRIBED "R/W BT" BEARS S38°E, 14.0 FT.
- CORNER [3]: 12" ALDER BARK SCRIBED "R/W BT" BEARS N66°E, 13.0 FT.
- CORNER [4]: 10" SPRUCE SCRIBED "R/W BT" BEARS S24°E, 24.9 FT.
- CORNER [5]: 14" DF SCRIBED "R/W BT" BEARS S29°W, 8.3 FT.
- CORNER [6]: 33" HEMLOCK SCRIBED "R/W BT" BEARS N49°E, 5.1 FT.
- CORNER [7]: 18" ALDER BARK SCRIBED "R/W BT" BEARS S84°W, 14.6 FT.
- CORNER [8]: 17" DF SCRIBED "R/W BT" BEARS S40°E, 13.6 FT.
- CORNER [9]: 17" ALDER BARK SCRIBED "R/W BT" BEARS S58°E, 16.7 FT.
- CORNER [10]: 17" SPRUCE SCRIBED "R/W BT" BEARS S78°W, 19.3 FT.
- CORNER [11]: 27" SPRUCE SCRIBED "R/W BT" BEARS S77°E, 5.0 FT.
- CORNER [12]: 33" HEMLOCK SCRIBED "R/W BT" BEARS S46°E, 11.4 FT.
- CORNER [13]: 11" ALDER BARK SCRIBED "R/W BT" BEARS N71°W, 20.3 FT.
- CORNER [14]: 12" ALDER BARK SCRIBED "R/W BT" BEARS N81°W, 31.0 FT.

BEARING AND DISTANCE BETWEEN MONUMENTS

- [1] - [2] - L.C. S9°39'02"W 192.91 FT.
- [2] - [3] - N78°33'15"E 33.25 FT.
- [3] - [4] - S11°28'33"E 149.97 FT.
- [4] - [5] - L.C. S39°04'03"E 340.62 FT.
- [5] - [6] - S66°40'33"E 252.40 FT.
- [6] - [7] - S23°19'27"W 20.00 FT.
- [7] - [8] - S66°40'33"E 144.40 FT.
- [8] - [9] - L.C. S46°56'33"E 198.94 FT.
- [9] - [10] - S27°12'33"E 152.93 FT.
- [10] - [11] - S50°14'44"E 76.59 FT.
- [11] - [12] - N40°25'23"E 40.05 FT. - RECORD N39°48'E - 40.00 FT.
- [12] - [13] - S49°56'35"E 199.98 FT. - RECORD S50°12'E 200.00 FT.
- [13] - [14] - S40°04'10"W 38.99 FT. - RECORD S39°48'W 40.00 FT.

APRIL 1, 1996  
 SCALE 1" = 200'

MAP FILE M 125-9