

FILED  
 Date: 6/10/96 By: JP  
 This survey consists of:  
 Map: M125-8  
 Narrative:  
 Corner Rpt:

DOUGLAS COUNTY  
 SURVEYOR

BOUNDARY LINE SURVEY  
 LOCATED ALONG THE EASTERLY PORTION OF U.S. HIGHWAY 101 RIGHT OF WAY  
 IN NE1/4 OF SEC. 27, T.21 S., R.12 W., W.M., DOUGLAS COUNTY, OREGON

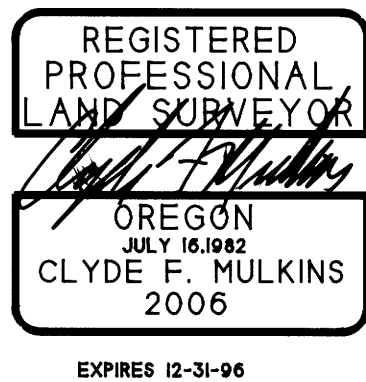
COUNTY SURVEYORS FILE DATA  
 DO NOT REMOVE FROM OFFICE

SURVEY FOR:

IP TIMBERLANDS OPERATING CO., LTD.  
 711 PORT DOCK ROAD  
 REEDSPORT, OR. 97467

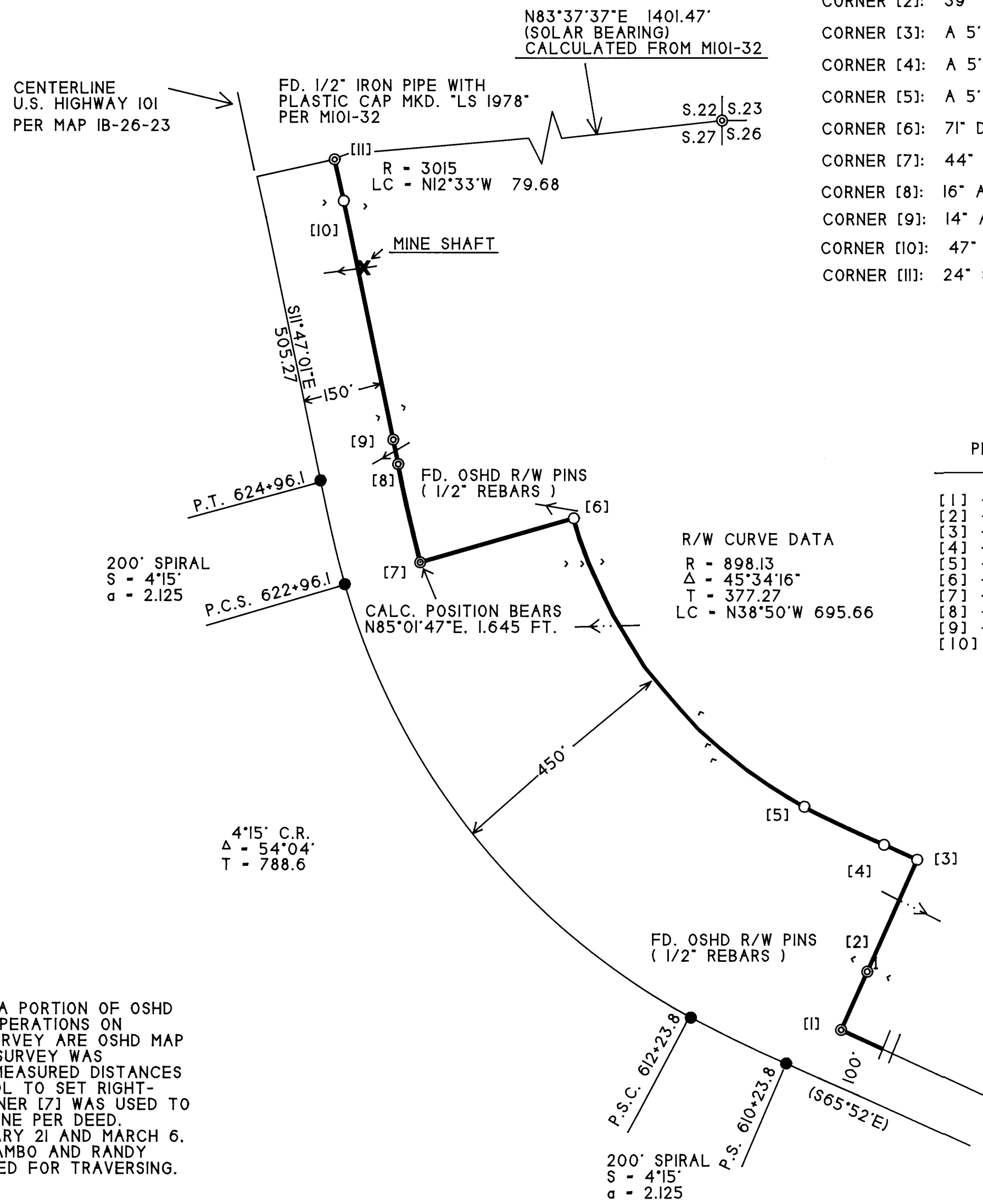
SURVEY BY:

CLYDE F. MULKINS  
 TIMBER CRUISING & ENGINEERING  
 P.O. BOX 750  
 COOS BAY, OR. 97420



BASIS OF BEARING - ASSUMED BETWEEN CORNERS  
 [2] AND [11] RECORD S33°26'51"E  
 1827.82 PER OSHD MAP IB-26-23  
 MEASURED 1827.80

MARCH 9, 1996  
 SCALE 1" = 200'



CORNER NOTES

- CORNER [1]: 20" DF SCRIBED "R/W BT" BEARS S88°W. 23.0 FT.
- CORNER [2]: 39" DF SCRIBED "R/W BT" BEARS S57°W. 10.8 FT.
- CORNER [3]: A 5' STEEL FENCE POST BEARS S61°W. 3.9 FT.
- CORNER [4]: A 5' STEEL FENCE POST BEARS N35°E. 14.3 FT.
- CORNER [5]: A 5' STEEL FENCE POST BEARS S66°E. 6.5 FT.
- CORNER [6]: 71" DF SCRIBED "R/W BT" BEARS N7°W. 52.5 FT.
- CORNER [7]: 44" DF SCRIBED "R/W BT" BEARS S43°E. 9.9 FT.
- CORNER [8]: 16" ALDER BARK SCRIBED "R/W BT" BEARS N75°W. 36.9 FT.
- CORNER [9]: 14" ALDER BARK SCRIBED "R/W BT" BEARS N71°W. 13.0 FT.
- CORNER [10]: 47" SPRUCE SCRIBED "R/W BT" BEARS N84°W. 14.3 FT.
- CORNER [11]: 24" SPRUCE SCRIBED "R/W BT" BEARS S81°E. 31.8 FT.

RECORD	MEASURED
[1] - [2] N24°08'E 120.00	N24°15'06"E 119.88
[2] - [3] N24°08'E 230.00	N24°08'00"E 230.00
[3] - [4] N65°52'W 68.66	N65°51'59"W 68.66
[4] - [5] LC - N64°36'W 166.59	N64°36'00"W 166.59
[5] - [6] LC - N38°50'W 695.66	N38°50'00"W 695.66
[6] - [7] S73°57'W 300.00	S74°00'47"W 301.61
[7] - [8] LC - N13°11'W 188.82	N12°44'33"W 189.08
[8] - [9] N11°48'W 45.9	N11°29'56"W 46.94
[9] - [10] N11°48'W 459.90	N11°48'39"W 458.34
[10] - [11] LC - N12°33'W 79.68	N12°31'54"W 79.68

R/W CURVE DATA  
 R = 898.13  
 Δ = 45°34'16"  
 T = 377.27  
 LC = N38°50'W 695.66

LEGEND

- ⊙ FD. CORNERS AS SHOWN
- SET 5/8" X 30" REBAR WITH PLASTIC CAP MKD. "LS 2006"
- CALCULATED CORNER POSITION
- LINE FLAGGED AND BLAZED
- [ ] CORNER REF. NO.
- ←...← CREEK / DRAW
- <<< RIDGES
- == GRAVEL ROAD
- ( ) RECORD BEARING PER MAP IB-26-23

NARRATIVE

THE PURPOSE OF THIS SURVEY WAS TO MARK OUT A PORTION OF OSHD RIGHT-OF-WAY AS SHOWN FOR FOREST MANAGEMENT OPERATIONS ON ADJACENT TIMBERLANDS. RECORDS USED FOR THIS SURVEY ARE OSHD MAP IB-26-23; M101-32; AND DEED BK. 22 PG. 546. THIS SURVEY WAS BASED ON A CLOSED LOOP TRAVERSE. RECORD AND MEASURED DISTANCES BETWEEN CORNER [2] AND [11] WERE USED FOR CONTROL TO SET RIGHT-OF-WAY CORNERS. A CALCULATED POSITION FOR CORNER [7] WAS USED TO MAINTAIN RECORD CALLS ALONG THE RIGHT-OF-WAY LINE PER DEED. THE FIELD WORK WAS PERFORMED BETWEEN FEBRUARY 21 AND MARCH 6, 1996. ASSISTING ME WITH THIS SURVEY WERE TROY RAMBO AND RANDY MADDEN. A TOPCON GTS-301 TOTAL STATION WAS USED FOR TRAVERSING.

MAP FILE M125-8

MAP FILE M125-8