

**A SURVEY FOR SILVER BUTTE TIMBER CO.**  
 IN SECTION 26, T31S, R4W, W.M.,  
 DOUGLAS COUNTY, OREGON

**COUNTY SURVEYORS FILE DATA**  
**DO NOT REMOVE FROM OFFICE**

FILED

Date: 6-3-96 By: JC  
 This survey consists of:  
 Map: M 125-6  
 Narrative: \_\_\_\_\_  
 Corner Apts: \_\_\_\_\_

DOUGLAS COUNTY SURVEYOR

FD. B. CAP 1/4 COR <sup>26</sup>/<sub>26</sub>  
 18" MAPLE BEARS N 28°W 22.1 FT.  
 31" STUMP BEARS S 44°W 26 LKS.  
 (DECOMPOSING)

SURVEYED BY:

GREG LANG  
 7550 WILLIS CREEK RD.  
 WINSTON, OREGON 97496



EXPIRES: 12-31-96

**NARRATIVE:**

SURVEY WAS CONDUCTED TO MARK PROPERTY BOUNDARIES AS SHOWN, PARTIAL SECTIONAL SUBDIVISION PER FOUND MONUMENTS SHOWN.

FIELD CREW: GREG LANG, D. RODGERS, M. BRANSON

EQUIPMENT: TM 6 & RED 1 EDM

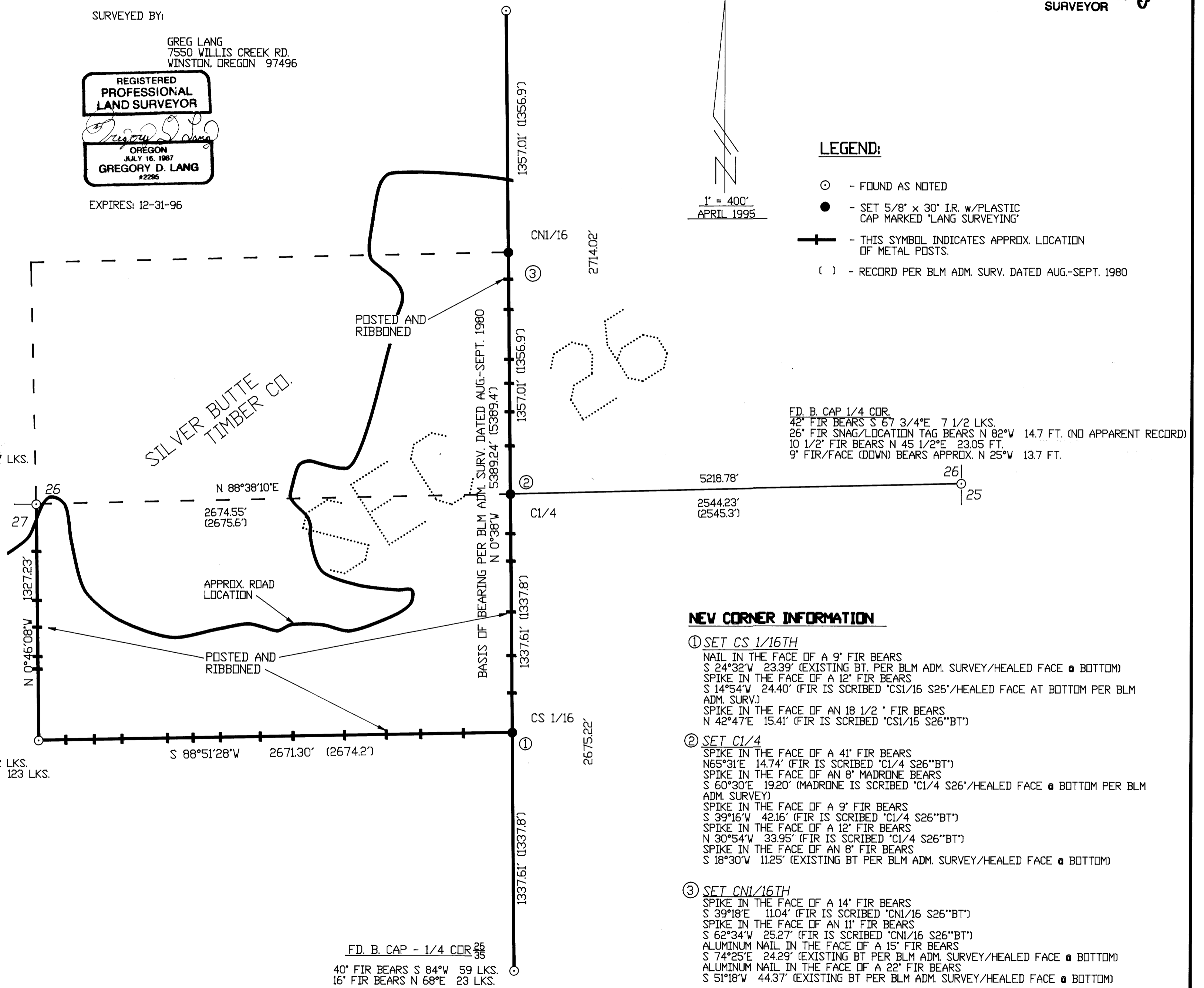
COMPUTATIONS: GREG LANG

DRAFTING: BILL WARREN

FD. B. CAP 1/4 COR.  
 28 1/2" FIR STUMP BEARS S 64 3/4°E 97 LKS.  
 RECORD 30" FIR S 7 1/4°W 134 1/2 LKS.  
 IS NOW DOWN (UPROOTED) & CUT OFF  
 (TAG IS STILL ATTACHED)

FD. B. CAP S1/16  
 13" FIR BEARS S 36°E 32 LKS.  
 18" FIR BEARS S 61 1/2°W 123 LKS.

FD. B. CAP - 1/4 COR <sup>26</sup>/<sub>36</sub>  
 40" FIR BEARS S 84°W 59 LKS.  
 16" FIR BEARS N 68°E 23 LKS.



**LEGEND:**

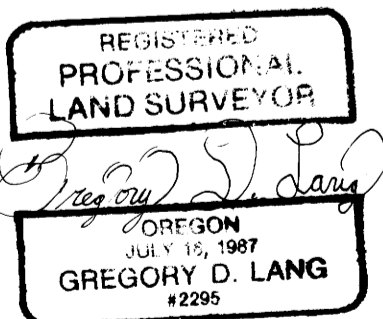
- ⊙ - FOUND AS NOTED
- - SET 5/8" x 30" IR. w/PLASTIC CAP MARKED 'LANG SURVEYING'
- ⊕ - THIS SYMBOL INDICATES APPROX. LOCATION OF METAL POSTS.
- ( ) - RECORD PER BLM ADM. SURV. DATED AUG.-SEPT. 1980

1" = 400'  
 APRIL 1995

FD. B. CAP 1/4 COR.  
 42" FIR BEARS S 67 3/4°E 7 1/2 LKS.  
 26" FIR SNAG/LOCATION TAG BEARS N 82°W 14.7 FT. (NO APPARENT RECORD)  
 10 1/2" FIR BEARS N 45 1/2°E 23.05 FT.  
 9" FIR/FACE (DOWN) BEARS APPROX. N 25°W 13.7 FT.

**NEW CORNER INFORMATION**

- ① SET CS 1/16TH  
 NAIL IN THE FACE OF A 9" FIR BEARS  
 S 24°32'W 23.39' (EXISTING BT. PER BLM ADM. SURVEY/HEALED FACE @ BOTTOM)  
 SPIKE IN THE FACE OF A 12" FIR BEARS  
 S 14°54'W 24.40' (FIR IS SCRIBED 'CS1/16 S26'/HEALED FACE AT BOTTOM PER BLM ADM. SURV.)  
 SPIKE IN THE FACE OF AN 18 1/2" FIR BEARS  
 N 42°47'E 15.41' (FIR IS SCRIBED 'CS1/16 S26''BT')
- ② SET C1/4  
 SPIKE IN THE FACE OF A 41" FIR BEARS  
 N65°31'E 14.74' (FIR IS SCRIBED 'C1/4 S26''BT')  
 SPIKE IN THE FACE OF AN 8" MADRONE BEARS  
 S 60°30'E 19.20' (MADRONE IS SCRIBED 'C1/4 S26'/HEALED FACE @ BOTTOM PER BLM ADM. SURV.)  
 SPIKE IN THE FACE OF A 9" FIR BEARS  
 S 39°16'W 42.16' (FIR IS SCRIBED 'C1/4 S26''BT')  
 SPIKE IN THE FACE OF A 12" FIR BEARS  
 N 30°54'W 33.95' (FIR IS SCRIBED 'C1/4 S26''BT')  
 SPIKE IN THE FACE OF AN 8" FIR BEARS  
 S 18°30'W 11.25' (EXISTING BT PER BLM ADM. SURVEY/HEALED FACE @ BOTTOM)
- ③ SET CN1/16TH  
 SPIKE IN THE FACE OF A 14" FIR BEARS  
 S 39°18'E 11.04' (FIR IS SCRIBED 'CN1/16 S26''BT')  
 SPIKE IN THE FACE OF AN 11" FIR BEARS  
 S 62°34'W 25.27' (FIR IS SCRIBED 'CN1/16 S26''BT')  
 ALUMINUM NAIL IN THE FACE OF A 15" FIR BEARS  
 S 74°25'E 24.29' (EXISTING BT PER BLM ADM. SURVEY/HEALED FACE @ BOTTOM)  
 ALUMINUM NAIL IN THE FACE OF A 22" FIR BEARS  
 S 51°18'W 44.37' (EXISTING BT PER BLM ADM. SURVEY/HEALED FACE @ BOTTOM)



MAP FILE M 125-6

MAP FILE M 125-6