

# RECORD OF SURVEY

SECTION 22, T30S, R8W, W.M.  
DOUGLAS COUNTY, OREGON

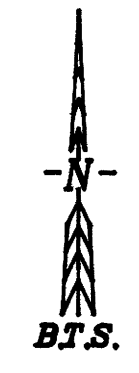
SCALE: 1" = 400' SEPTEMBER 1996

FILED  
Date: 9-4-96 By: JP  
This survey consists of:  
Map: M125-51  
Narrative:  
Corner Rpt:

DOUGLAS COUNTY  
SURVEYOR

SURVEYED BY:  
BTS ENGINEERING & SURVEYING INC.  
431 S.E. MAIN STREET  
ROSEBURG, OR 97470  
PHONE (503) 673-0966  
FAX (503) 673-0105

SURVEYED FOR:  
BLUE HERON LAND CO.  
P.O. BOX 848  
WINCHESTER, OREGON 97465



**NARRATIVE:**

THE PURPOSE OF THIS SURVEY WAS TO SUBDIVIDE SECTION 22, MONUMENT THE CORNERS OF THE NE 1/4, SW 1/4 AND TO MARK BOUNDARY LINES FOR LOGGING. THE SOUTHWEST RESTORED CORNER AND THE NORTH, SOUTH, EAST AND WEST 1/4 CORNERS ARE ALL ORIGINAL GLO CORNER POSITIONS PER DCSO RECORDS AND CONTROLLED THE SUBDIVISION OF SECTION 22.  
THIS SURVEY WAS PERFORMED BY LES FANNING, MATT DIXON, AARON FANNING AND KENNY MACK USING SOKKIA SET 2BII AND SET 5A TOTAL STATION WITH COMPUTATIONS BY KRIS DEGROOT AND DRAFTING BY BILL WARREN.

REGISTERED  
PROFESSIONAL  
LAND SURVEYOR

*Kristian C. DeGroot*

OREGON  
JULY 17, 1981  
KRISTIAN C. DEGROOT  
1941

EXPIRES: 12-31-97

**LEGEND:**

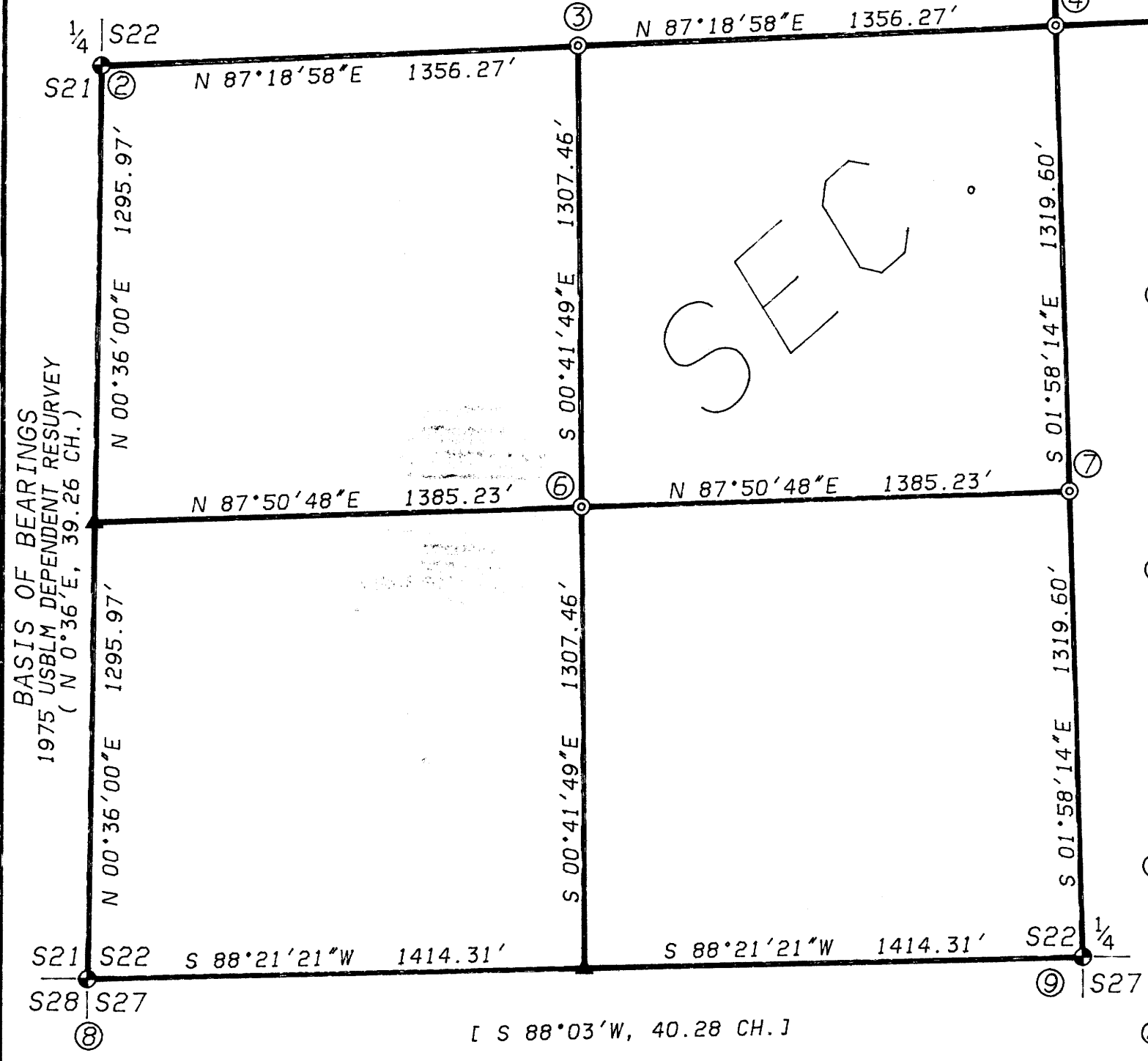
- ⊙ = SET 5/8" x 30" IRON ROD W/ PLASTIC CAP MK'D. "BTS ENG-SURV".
- ⊕ = FOUND BCIP
- ▲ = COMPUTED POINT, NOT SET.
- ⊛ = CORNER DESCRIPTION
- ( ) = RECORD CALLS PER 1975 USBLM DEPENDANT RESURVEY
- [ ] = RECORD CALLS PER USGLO 1882

**CORNER DESCRIPTIONS:**

ALL NEW BEARING TREES HAVE DOUBLE BLAZED FACES WITH A BRASS WASHER STAMPED "PLS 1941" NAILED INTO THE LOWER BLAZE. BEARINGS ARE TAKEN TO THE CENTER OF THE TREE AT THE ROOT CROWN AND DISTANCES ARE MEASURED TO A NAIL IN THE ROOT CROWN AT THE SIDE AND CENTER OF THE TREE.

- ① FOUND A 1" IRON PIPE BY BYRON IN 1958 PER CS 49/108, FIRMLY SET, PROJECTING 18" ABOVE THE GROUND WITH A 2 1/2" BRASS CAP STAMPED:  
COUNTY SURVEYORS OFFICE  
T30S R8W  
1 S15  
4 S22  
1958  
FROM WHICH BEARING TREES BY BYRON IN 1958:  
A 19" D.FIR BEARS S.16°W., 27.5 FT WITH A HEALED BLAZE.  
A 13" D.FIR STUMP BEARS N.22°30'E., 30.8 FT WITH A HEALED BLAZE.
- ② FOUND A 2" IRON PIPE BY POPKEN & CARLSON IN 1975 PER A USBLM DEPENDENT RESURVEY, FIRMLY SET, PROJECTING 6" ABOVE THE GROUND WITH A 3 1/4" USBLM STANDARD BRASS CAP ORIENTED TO THE SOUTH AND STAMPED:  
T30S R8W  
1/4  
S21 S22  
1975  
FROM WHICH AN ORIGINAL BEARING TREE:  
A 8" UPROOTED AND ROTTED FIR SNAG BEARS N.36°W., 5.9 FEET.  
AND BEARING TREES BY POPKEN & CARLSON IN 1975:  
A 17" W.FIR BEARS S.89°E., 25.7 FT. WITH A HEALED BLAZE.  
A 25" W.FIR BEARS N.64°W., 44.2 FT. WITH A HEALED BLAZE.
- ③ SET A 5/8"x30" IRON ROD 28" IN THE GROUND WITH PLASTIC CAP "BTS ENG-SURV".  
FROM WHICH NEW BEARING OBJECTS:  
"X B0" CHISELED ON THE WESTERLY VERTICAL FACE OF A 6'x8'x12" BOULDER BEARS N.85°E., 7.77 FT. TO THE CENTER OF THE "X".  
"X B0" CHISELED ON THE BASE OF A LARGE ROCK OUTCROPPING BEARS S.46°W., 4.92 FEET TO THE CENTER OF THE "X".
- ④ SET A 5/8"x30" IRON ROD 26" IN THE GROUND WITH PLASTIC CAP "BTS ENG-SURV".  
FROM WHICH NEW BEARING TREES:  
A 12" D.FIR BEARS S.28°E., 10.2 FT., SCRIBED "C 1/4 S22 BT".  
A 8" D.FIR BEARS N.73°W., 11.3 FT., SCRIBED "C 1/4 S22 BT".  
AND NEW BEARING OBJECTS:  
A 5/8"x30" IRON ROD WITH PLASTIC CAP "BTS ENG-SURV" BEARS N.28°W., 20.00 FT.  
A 5/8"x30" IRON ROD WITH PLASTIC CAP "BTS ENG-SURV" BEARS S.73°E., 20.00 FT.

- ⑤ FOUND A 1" IRON PIPE BY TRACY IN 1965 PER CS 53/67, FIRMLY SET, PROJECTING 13" ABOVE THE GROUND WITH A 2 1/2" BRASS CAP STAMPED:  
COUNTY SURVEYORS OFFICE  
T30S R8W  
1 S22 S23  
4 1965  
FROM WHICH AN ORIGINAL BEARING TREE:  
A 26" CHINQUAPIN SNAG BEARS N.56°W., 29.7 FT. TO FACE WITH ROTTED BLAZE.  
AND BEARING TREES BY QUIBELL IN 1981 PER CS 61/27:  
A 30" CEDAR BEARS N.78°E., 99.4 FT WITH SCRIBE MARKS "1/4 S22 CS BT" VISIBLE.  
A 14" D.FIR BEARS N.82°W., 18.4 FT. WITH A HEALED BLAZE.
- ⑥ SET A 5/8"x30" IRON ROD 25" IN THE GROUND WITH A PLASTIC CAP "BTS ENG-SURV".  
FROM WHICH NEW BEARING TREES:  
A 16" D.FIR BEARS S.6°W., 17.9 FT. SCRIBED "SW 1/16 S22 BT".  
A 15" D.FIR BEARS N.77°30'W., 13.9 FT. SCRIBED "SW 1/16 S22 BT".
- ⑦ SET A 5/8"x30" IRON ROD 26" IN THE GROUND WITH A PLASTIC CAP "BTS ENG-SURV".  
FROM WHICH NEW BEARING TREES:  
A 13" D.FIR BEARS N.6°30'E., 11.8 FT. SCRIBED "CS 1/16 S22 BT".  
A 11" D.FIR BEARS S.79°W., 15.6 FT. SCRIBED "CS 1/16 S22 BT".
- ⑧ FOUND A 1" IRON PIPE BY TRACY IN 1965 PER CS 53/67, FIRMLY SET, PROJECTING 7" ABOVE THE GROUND WITH A 2 1/2" BRASS CAP STAMPED:  
COUNTY SURVEYORS OFFICE  
T30S R8W  
S21 S22  
S28 S27  
1965  
FROM WHICH ORIGINAL BEARING TREES:  
A 10" ROTTED FIR STUMP BEARS N.33°E., 7.3 FT.  
A 22" D.FIR BEARS S.25°W., 18.5 FT. WITH A HEALED BLAZE.  
A ROOT HOLE BEARS N.71°W., 11.9 FT. WITH UPROOTED 33" FIR ALONGSIDE.  
AND BEARING TREES BY TRACY IN 1965:  
A ROOT HOLE BEARS N.26°E., 16.6 FT. WITH AN UPROOTED 18" D.FIR STUMP ALONGSIDE WITH SCRIBE MARKS VISIBLE.  
A ROOT HOLE BEARS S.13°E., 35.6 FT. WITH A ROTTED 7" CEDAR ALONGSIDE.  
AND BEARING TREES BY POPKEN & CARLSON IN 1975:  
A ROOT HOLE BEARS S.82°30'E., 37.3 FT. WITH A PARTIALLY UPROOTED 10" FIR STUMP LAYING UPSIDE DOWN AND ALONGSIDE.  
A ROOT HOLE BEARS N.36°30'W., 30.4 FT. WITH AN UPROOTED 30" D.FIR ALONGSIDE WITH SCRIBE MARKS "T30S R8W S21 BT" VISIBLE.
- ⑨ FOUND A 1" IRON PIPE BY BYRON IN 1958 PER CS 49/108, FIRMLY SET, PROJECTING 15" ABOVE THE GROUND WITH A 2 1/2" BRASS CAP STAMPED:  
COUNTY SURVEYORS OFFICE  
T30S R8W  
1 S22  
4 S27  
1958  
FROM WHICH THE ORIGINAL BEARING TREES:  
A 15" CEDAR BEARS S.35°E., 5.8 FT. WITH A HEALED BLAZE (REC S.32°E., 8 LKS.)  
A 29" D.FIR BEARS N.5°E., 29.9 FT. WITH A PARTIALLY HEALED BLAZE (REC NORTH, 45 LKS.)  
AND A BEARING TREE BY TRACY IN 1964:  
A 8" D.FIR BEARS NORTH, 34.5 FT. WITH A HEALED BLAZE (REC N.3°W., 34.2 FT.)



COUNTY SURVEYORS FILE DATA  
DO NOT REMOVE FROM OFFICE

MAP FILE M125-51

MAP FILE M125-51