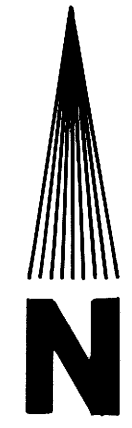


Date: B-26-96 By: JP
This survey consists of:
Map: M125-48
Narrative: _____
Corner Rpt: _____

**COUNTY SURVEYORS FILE DATA
DO NOT REMOVE FROM OFFICE**

**DOUGLAS COUNTY
SURVEYOR**

REGISTERED
PROFESSIONAL
LAND SURVEYOR
L. D. Roberts
OFFICE
125-48
EXPIRES 12-31-96

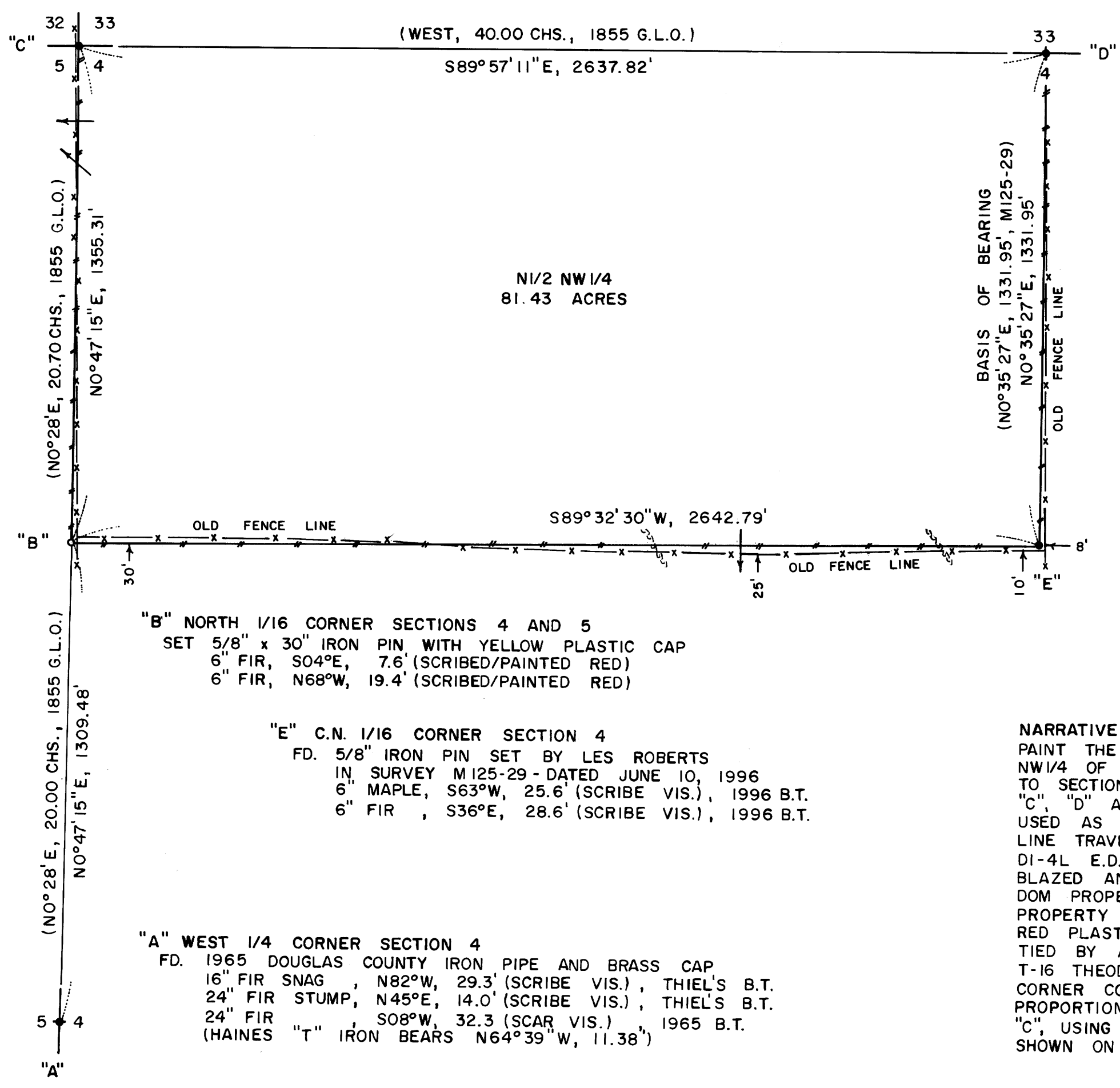


SCALE 1" = 300'
JULY 31, 1996

"D" NORTH 1/4 CORNER SECTION 4
FD. HAINES "T" IRON AND 3/4" IRON ROD AS
SET IN SURVEY M34-29.
28" FIR SNAG, N18°W, 39.1' (SCRIBE VIS.), 1855 B.T.
14" W. FIR, N30°W, 15.4' (SCAR VIS.), 1980 B.T.
14" W. FIR, S35°E, 18.6' (SCAR VIS.), 1980 B.T.

"C" N.W. CORNER SECTION 4
FD. 1" ALUMINUM PIPE AS NOTED IN C.S. FILE 53/101
20" BLACK OAK, N12°W, 15.8' (SCAR VIS.), 1965 B.T.
20" FIR, N52°E, 40.6' (SCAR VIS.), 1965 B.T.
22" FIR, S80°E, 25.0' (SCAR VIS.), 1965 B.T.

SURVEY FOR
WEYERHAEUSER COMPANY
IN
NW1/4 SECTION 4, T23S, R4W, W.M.
DOUGLAS COUNTY, OREGON
BY
ROBERTS SURVEYING INC.
P.O. BOX 7155
EUGENE, OREGON 97401
PHONE 345-1112



LEGEND,

- MONUMENTS FOUND AND USED FOR CONTROL
- MONUMENTS SET - 5/8" x 30" IRON PINS WITH YELLOW PLASTIC CAPS. CAPS MARKED ROBERTS P.L.S. 1039.
- () DATA OF RECORD - 1855 G.L.O. SURVEY BY HARVEY GORDON AND CHARLES GARDNER. ALSO SURVEY M125-29 BY LES ROBERTS IN 1996.
- LINES BLAZED AND PAINTED THIS SURVEY
- BASIS OF BEARING - LINE "D-E" FROM SURVEY M125-29 BY LES ROBERTS IN 1996.
- DISTANCES TO B.T.'S ARE CENTER MEASURE
- ALL NEW B.T.'S ARE SCRIBED AND HAVE A METAL WASHER STAMPED P.L.S. 1039 NAILED TO LOWER BLAZE. SCRIBED BLAZES ARE PAINTED RED.

NARRATIVE, THE PURPOSE OF THIS SURVEY IS TO BLAZE AND PAINT THE EAST, SOUTH AND WEST LINES OF THE NW1/2 OF THE NW1/4 OF SAID SECTION 4. ALSO THE NORTH 1/16 CORNER COMMON TO SECTION 4 AND 5 WAS SET IN THIS SURVEY. MONUMENTS "A", "C", "D" AND "E" WERE FOUND IN THE FIELD, AS SHOWN, AND USED AS CONTROL FOR THIS SURVEY. A CLOSED RANDOM PROPERTY LINE TRAVERSE, USING A WILD T-16 THEODOLITE AND A WILD DI-4L E.D.M., WAS RUN ALONG ALL PROPERTY LINES TO BE BLAZED AND PAINTED. OFFSETS WERE COMPUTED FROM THIS RANDOM PROPERTY LINE TRAVERSE TO THE TRUE PROPERTY LINES. PROPERTY LINES WERE MARKED WITH RED PAINTED BLAZES AND RED PLASTIC RIBBON. THE WEST 1/4 CORNER OF SECTION 4 WAS TIED BY A CLOSED RANDOM CONTROL TRAVERSE, USING A WILD T-16 THEODOLITE AND A WILD DI-4L E.D.M. THE NORTH 1/16 CORNER COMMON TO SECTIONS 4 AND 5 WAS SET BY SINGLE PROPORTIONATE MEASURE, BETWEEN FOUND MONUMENTS "A" AND "C", USING DISTANCES OF 20.00 CHAINS AND 20.70 CHAINS AS SHOWN ON THE 1855 G.L.O. PLAT.

MAP FILE M125-48

MAP FILE M125-48