

FILED

Date: 8.15.96 By: [Signature]

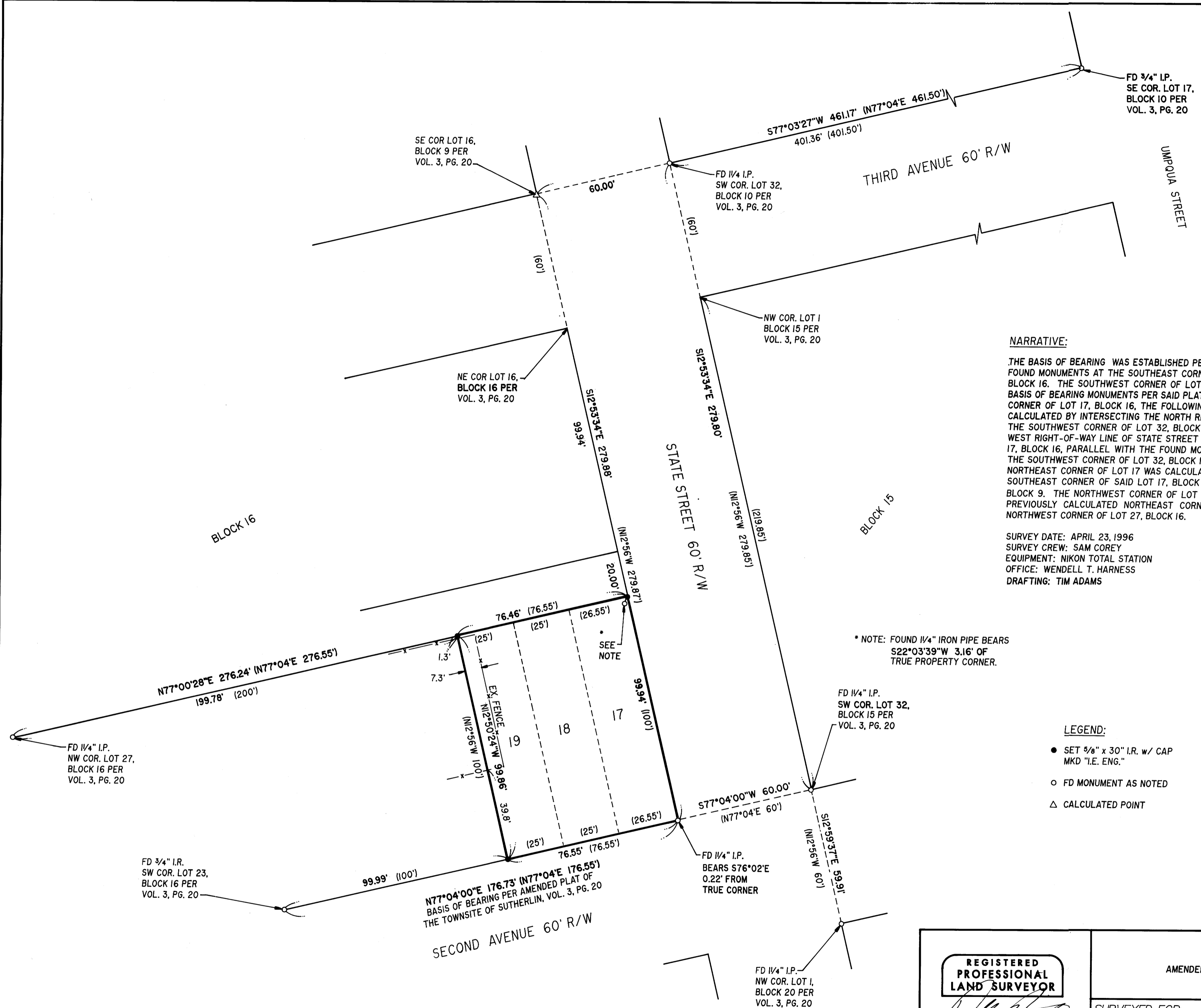
This survey consists of:
Map: M 125-41

Narrative: _____
Corner Rpt: _____

DOUGLAS COUNTY
SURVEYOR

M 125-41
MAP FILE

COUNTY SURVEYORS FILE DATA
DO NOT REMOVE FROM OFFICE



NARRATIVE:

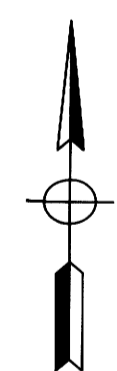
THE BASIS OF BEARING WAS ESTABLISHED PER THE AMENDED PLAT OF THE TOWNSITE OF SUTHERLIN USING THE FOUND MONUMENTS AT THE SOUTHEAST CORNER OF LOT 17, BLOCK 16 AND THE SOUTHWEST CORNER OF LOT 23, BLOCK 16. THE SOUTHWEST CORNER OF LOT 19, BLOCK 16 WAS CALCULATED BY PROPORTIONING BETWEEN THE BASIS OF BEARING MONUMENTS PER SAID PLAT. IN ORDER TO ESTABLISH THE TRUE LOCATION OF THE NORTHEAST CORNER OF LOT 17, BLOCK 16, THE FOLLOWING WAS DONE: THE SOUTHEAST CORNER OF LOT 16, BLOCK 9 WAS CALCULATED BY INTERSECTING THE NORTH RIGHT-OF-WAY LINE OF THIRD AVENUE (USING FOUND MONUMENTS AT THE SOUTHWEST CORNER OF LOT 32, BLOCK 10 AND THE SOUTHEAST CORNER OF LOT 17, BLOCK 10) WITH THE WEST RIGHT-OF-WAY LINE OF STATE STREET (FROM THE FOUND MONUMENT AT THE SOUTHEAST CORNER OF LOT 17, BLOCK 16, PARALLEL WITH THE FOUND MONUMENTS ON THE EAST RIGHT-OF-WAY LINE OF STATE STREET AT THE SOUTHWEST CORNER OF LOT 32, BLOCK 10 AND THE SOUTHWEST CORNER OF LOT 32, BLOCK 15); THEN SAID NORTHEAST CORNER OF LOT 17 WAS CALCULATED BY PROPORTIONING BETWEEN THE FOUND MONUMENTS AT THE SOUTHEAST CORNER OF SAID LOT 17, BLOCK 16 AND THE NEWLY CALCULATED SOUTHEAST CORNER OF LOT 16, BLOCK 9. THE NORTHWEST CORNER OF LOT 19, BLOCK 16 WAS ESTABLISHED BY PROPORTIONING BETWEEN THE PREVIOUSLY CALCULATED NORTHEAST CORNER OF LOT 17, BLOCK 16 AND THE FOUND MONUMENT AT THE NORTHWEST CORNER OF LOT 27, BLOCK 16.

SURVEY DATE: APRIL 23, 1996
 SURVEY CREW: SAM COREY
 EQUIPMENT: NIKON TOTAL STATION
 OFFICE: WENDELL T. HARNESS
 DRAFTING: TIM ADAMS

* NOTE: FOUND 1/4" IRON PIPE BEARS
 S22°03'39"W 3.16' OF
 TRUE PROPERTY CORNER.

LEGEND:

- SET 5/8" x 30" I.R. w/ CAP MKD "I.E. ENG."
- FD MONUMENT AS NOTED
- △ CALCULATED POINT



MAP FILE M 125-41

<p>REGISTERED PROFESSIONAL LAND SURVEYOR</p> <p>OREGON JULY 12, 1968 DONALD A. BENTZ 839</p> <p>EXPIRES 12-31-97</p>	<p>SURVEY</p> <p>OF LOTS 17, 18, & 19, BLOCK 16 OF AMENDED PLAT OF THE TOWNSITE OF SUTHERLIN, IN THE SW1/4 OF THE SE1/4 OF SEC. 17, T25S, R5W, W.M., DOUGLAS COUNTY, OREGON</p>	
	<p>SURVEYED FOR:</p> <p>JOEL ROMAN 107 W. 2ND ST. SUTHERLIN, OREGON 97479</p>	<p>SURVEYED BY:</p> <p>i.e. ENGINEERING</p> <p>548 S.E. Jackson Suite 3 Roseburg, Oregon 97470 PHONE (541) 673-0166 FAX (541) 440-9392</p>
<p>SCALE: 1" = 30'</p>	<p>DATE: MAY 11, 1996</p>	<p>1292-01</p>