

# LONE ROCK TIMBER CO.

PO BOX 1127 ROSEBURG OREGON 97470 DATE: JULY 1996  
 SECTION 07, TOWNSHIP 22 SOUTH, RANGE 6 WEST, W.M. DOUGLAS COUNTY, OREGON  
 JUNIPER PROPERTIES TRACT J22-6-07 SCALE 1" = 500'

FILED

**COUNTY SURVEYORS FILE DATA**  
**DO NOT REMOVE FROM OFFICE**

Date: 8-13-96 By: PC  
 This survey consists of:  
 Map: M 125-38  
 Narrative:  
 Corner Rpt:

DOUGLAS COUNTY  
 SURVEYOR



BASIS OF BEARING  
 FROM M 121 - 43

**LEGEND:**

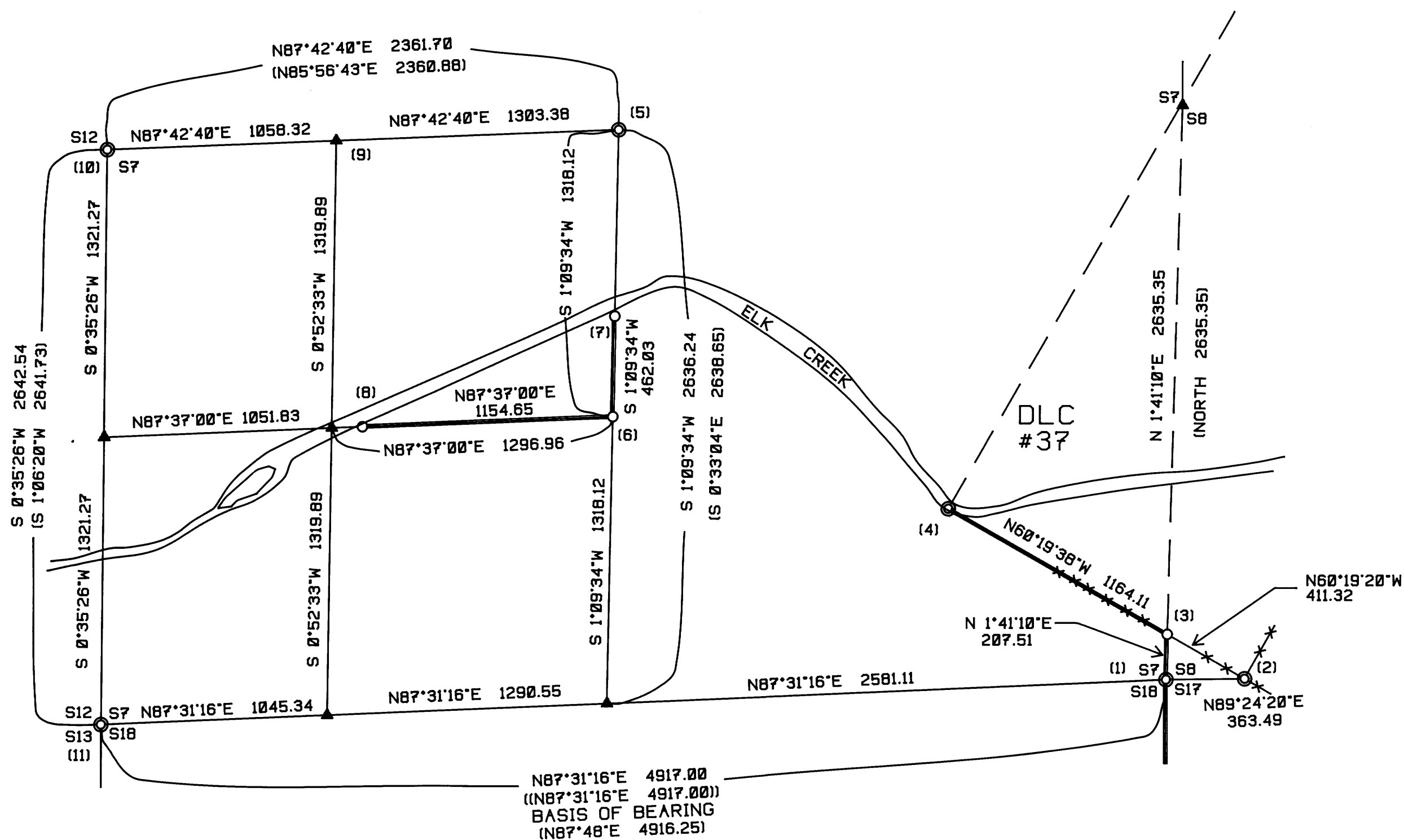
- ⊙ - FOUND MONUMENT
- - SET 5/8" BY 40" IRON ROD WITH ALUMINUM CAP
- ▲ - COMPUTED NOT SET
- - LINES FLAGGED, BLAZED & TAGGED
- - PROJECTED LINES
- - - - CALCULATED PROJECTED LINES
- [ ] - DAVID EDWARDS RECORD SURVEY FILED IN DOUGLAS COUNTY SURVEYORS OFFICE AS M123 - 51
- (( )) - KEN HOFFINE RECORD SURVEY FILED IN DOUGLAS COUNTY SURVEYORS OFFICE AS M121 - 43

REGISTERED  
 PROFESSIONAL  
 LAND SURVEYOR

*Ken W. Hoffine*

OREGON  
 JULY 10, 1987  
 KEN W. HOFFINE  
 2201

EXPIRES 6-30-97



**NARRATIVE**

THIS SURVEY WAS CONDUCTED TO ESTABLISH PROPERTY CORNERS AND PROPERTY LINES FOR TIMBER CUTTING PURPOSES. WE INITIATED THIS SURVEY AT THE SOUTHEAST CORNER OF SECTION 7 WHICH IS A BLM BRASS CAP SET FROM ORIGINAL EVIDENCE. RUNNING A RANDOM TRAVERSE WESTERLY TO THE SOUTHWEST CORNER OF SECTION 7 WHICH IS AN "X" IN A ROCK FROM A PROPORTIONED CORNER POINT BY WILFORD HAINES. WE CONTINUED OUR TRAVERSE NORTHERLY TO THE WEST 1/4 OF SECTION 7 A HAINES T-BAR SET BY PROPORTION. THEN EAST TO THE C1/16 AN IRON ROD SET BY BRANCH ENGINEERING BY MY CALCULATIONS S82°54'59"W, 6.60 FEET OUT OF POSITION. WE THEN TRAVERSE EASTERLY TO THE CENTER 1/4 OF SECTION 7 SET BY DAVID EDWARDS, THENCE WESTERLY TO SURVEY CONTROL NEAR HWY 38 AND A POWERLINE WE ESTABLISHED FROM PREVIOUS SURVEYS TO CLOSE OUR TRAVERSE. BEGINNING A NEW TRAVERSE AT THE SOUTHEAST CORNER OF SECTION 7 WE RANDOM TRAVERSED TO AN IRON PIPE SET ON THE SOUTH LINE OF DLC #37 SET BY BEN IRVING THEN NORTHWESTERLY TO THE SOUTHWEST CORNER OF DLC #37 SET BY THE BLM USING THE BROKEN BOUNDARIES METHOD. WE THEN CONTINUED OUR SURVEY WESTERLY TO SET THE CENTER SOUTH 1/16 CORNER AND IRON RODS (7) AND (8) AS SHOWN HEREON TYING INTO PREVIOUS SURVEY CONTROL ON HIGHWAY 38 TO CHECK CLOSURE. WE ALSO SET AN IRON ROD BETWEEN IRVING'S IRON PIPE PROPERTY CORNER AND THE BLM SOUTHWEST CORNER OF DLC #37 USING A CALCULATED BEARING FROM EDWARDS SURVEY FOR THE EAST LINE OF SECTION 7. THIS SURVEY WAS DONE WITH A NIKON DTM-A10 AND LIETZ SET 2 TOTAL STATION WITH GARY ANGIOLET AND GERALD RAGON ASSISTING ME.

**CORNER INFORMATION**

THE FOLLOWING IS A RECORD OF ALL CORNERS FOUND OR SET DURING THE COURSE OF THIS SURVEY.

- 1) SOUTHEAST SECTION CORNER OF 7  
 FOUND: COUNTY SURVEYORS BRASS CAP 0.4 FEET ABOVE GROUND.  
 -- 3" MAPLE IN CLUMP OF THREE BEARS S22°59'W, 28.2 FEET  
 -- 1" WHITE FIR BEARS S70°52'W, 107.8 FEET, SCRIBING VISIBLE WITH COUNTY TAG  
 -- 2" WHITE FIR BEARS N27°37'W, 37.4 FEET, WELL HEALED SCAR WITH COUNTY TAG  
 -- 3" DOUGLAS FIR BEARS N35°30'W, 15.5 FEET, WELL HEALED SCAR WITH 3 B.T. TAGS  
 CORNERS LIES ON NORTHERLY GENTLE SLOPE WITH GRASS FIELDS TO THE EAST.
- 2) CORNER AT INTERSECTION OF SOUTH BOUNDARY OF SECTION 8 AND SOUTH LINE OF DLC #37-M  
 FOUND: 1 1/2" IRON PIPE 0.4 FEET ABOVE GROUND.  
 THE CORNER IS SOUTH 0.5 FEET OF AN INTERSECTING FENCE RUNNING PERPENDICULAR TO THE SOUTH BOUNDARY FENCE LINE OF DLC.
- 3) CORNER AT INTERSECTION OF EAST BOUNDARY OF SECTION 7 AND SOUTH LINE OF DLC #37.  
 SET: 5/8" X 3/8" REBAR WITH YELLOW PLASTIC CAP MARKED LONE ROCK TIMBER PLS 2291.  
 -- 24" GRAND FIR BEARS S20°20'W, 22.1 FEET, WE SCRIBED B.T. AND TAGGED  
 CORNER LIES SOUTH OF A GRASS MEADOW AND NORTH OF A STAND OF TREES.
- 4) SOUTHWEST CORNER OF DLC #37  
 FOUND: BLM 3 1/4" BRASS CAP FLUSH WITH RIVER BED ROCK.  
 -- 2 1/2" BRASS CAP WITNESS CORNER BEARS N36°05'W, 126.6 FEET, A 20" BIG LEAF MAPLE BEARS N60°06'E, 29.9 FEET FROM WITNESS CORNER, WE TAGGED  
 CORNER LIES IN RIVER BED ROCK ON THE NORTH SIDE OF THE RIVER.
- 5) CENTER 1/4 OF SECTION 7  
 FOUND: 5/8" REBAR WITH A RED PLASTIC CAP.  
 -- 6" CEDAR BEARS S21°E, 27.9 FEET (RECORD S18°30'E, 27.85 FEET) SCRIBING VISIBLE, NO TAG  
 -- 9" DOUGLAS FIR BEARS N19°30'W, 15.0 FEET, SCRIBING VISIBLE, NO TAG  
 -- 8" GRAND FIR BEARS S60°W, 20.4 FEET (RECORD S65°W, 21.03 FEET) SCRIBING VISIBLE, NO TAG  
 CORNER IS LOCATED ON A SOUTHEAST 50% SLOPE 70 FEET WEST OF CREEK.
- 6) CENTER SOUTH SECTION 7  
 SET: 5/8" X 3/8" REBAR WITH 2" ALUMINUM CAP MARKED LONE ROCK TIMBER SC 1/16 S7 1996 PLS 2291.  
 -- 15" DOUGLAS FIR BEARS N5°06'W, 27.8 FEET, WE SCRIBED CS 1/16 S7 B.T. AND TAGGED  
 -- 20" DOUGLAS FIR BEARS N61°33'E, 19.0 FEET, WE SCRIBED CS 1/16 S7 B.T. AND TAGGED  
 CORNER LIES ON ROLLING GROUND ON THE NORTH EDGE OF POWERLINE APPROXIMATELY 5.0 FEET INTO TIMBER.
- 7) PROPERTY CORNER  
 SET: 5/8" X 3/8" REBAR WITH YELLOW PLASTIC CAP MARKED LONE ROCK TIMBER PLS 2291.  
 -- 16" DOUGLAS FIR BEARS N88°09'E, 22.1 FEET, WE SCRIBED B.T. AND TAGGED  
 CORNER LIES ON THE SOUTH BANK OF ELK CREEK.
- 8) PROPERTY CORNER  
 SET: 5/8" X 3/8" REBAR WITH YELLOW PLASTIC CAP MARKED LONE ROCK TIMBER PLS 2291.  
 -- 16" DOUGLAS FIR BEARS N62°14'E, 24.2 FEET, WE SCRIBED B.T. AND TAGGED  
 CORNER LIES ON THE SOUTH BANK OF ELK CREEK.
- 9) CENTERWEST 1/16 SECTION 7  
 FOUND: 5/8" REBAR WITH PLASTIC CAP, A FENCE POST IS ALONG SIDE FROM BRANCH SURVEY. WE CALCULATE THIS CORNER S82°54'59"W, 6.60 FEET OUT OF POSITION.  
 -- 16" DOUGLAS FIR BEARS N67°48'E, 25.9 FEET (RECORD N66°E, 26.5 FEET) WELL HEALED FACE WITH B.T. TAG  
 -- 12" DOUGLAS FIR BEARS N68°16'W, 8.5 FEET (RECORD N65°W, 8.5 FEET) WELL HEALED FACE WITH B.T. TAG  
 CORNER LIES ON A STEEP EASTERLY SLOPE APPROXIMATELY 5.0 FEET WEST OF A DRY CREEK.
- 10) WEST 1/4 SECTION 7  
 FOUND: HAINES T-IRON WITH METAL WASHER 1.0 FEET ABOVE GROUND.  
 -- 22" DOUGLAS FIR BEARS N73°15', 58.8 FEET, WELL HEALED FACE WITH B.T. TAG  
 -- 25" GRAND FIR BEARS N45°16'E, 41.9 FEET WELL HEALED FACE WITH BLM AND MEYCO TAGS  
 -- 8" GRAND FIR BEARS N43°24'E, 8.2 FEET WELL HEALED FACE WITH MEYCO TAGS  
 -- 1" GRAND FIR 5' TALL, SNAG BEARS S28°02'E, 4.5 FEET SCRIBING VISIBLE WITH MEYCO TAG  
 CORNER LIES APPROXIMATELY 75.0 FEET SOUTHWEST OF A GRAVEL ROAD THAT BEARS SOUTHEAST.
- 11) SOUTHWEST SECTION CORNER OF 7  
 FOUND: CHOPPED "X" IN ROCK.  
 -- 14" DOUGLAS FIR BEARS N50°W, 2.4 FEET, WELL HEALED FACE WITH BLM TAG  
 -- 20" DOUGLAS FIR BEARS N57°E, 17.8 FEET, WELL HEALED FACE WITH BLM TAG AND HAINES WASHER  
 -- 18" DOUGLAS FIR BEARS N50°E, 24.7 FEET, WELL HEALED FACE WITH BLM TAG  
 CORNER LIES ON VERY STEEP ROCKY SOUTHEAST SLOPE AND ON NORTH EDGE OF POWERLINES.

MAP FILE M 125 - 38

MAP FILE M 125 - 38