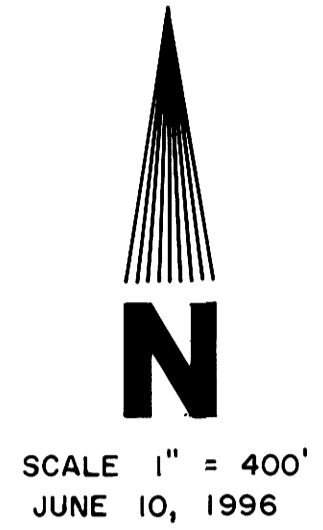


COUNTY SURVEYORS FILE DATA
 DO NOT REMOVE FROM OFFICE

BOUNDARY SURVEY
 FOR
 BUCK BICKEL
 IN
 WEST 1/2 SECTION 3, T23S, R4W, W.M.
 EAST 1/2 SECTION 4, T23S, R4W, W.M.
 DOUGLAS COUNTY, OREGON
 BY
 ROBERTS SURVEYING INC.
 P.O. BOX 7155
 EUGENE, OREGON 97401
 PHONE 345-1112

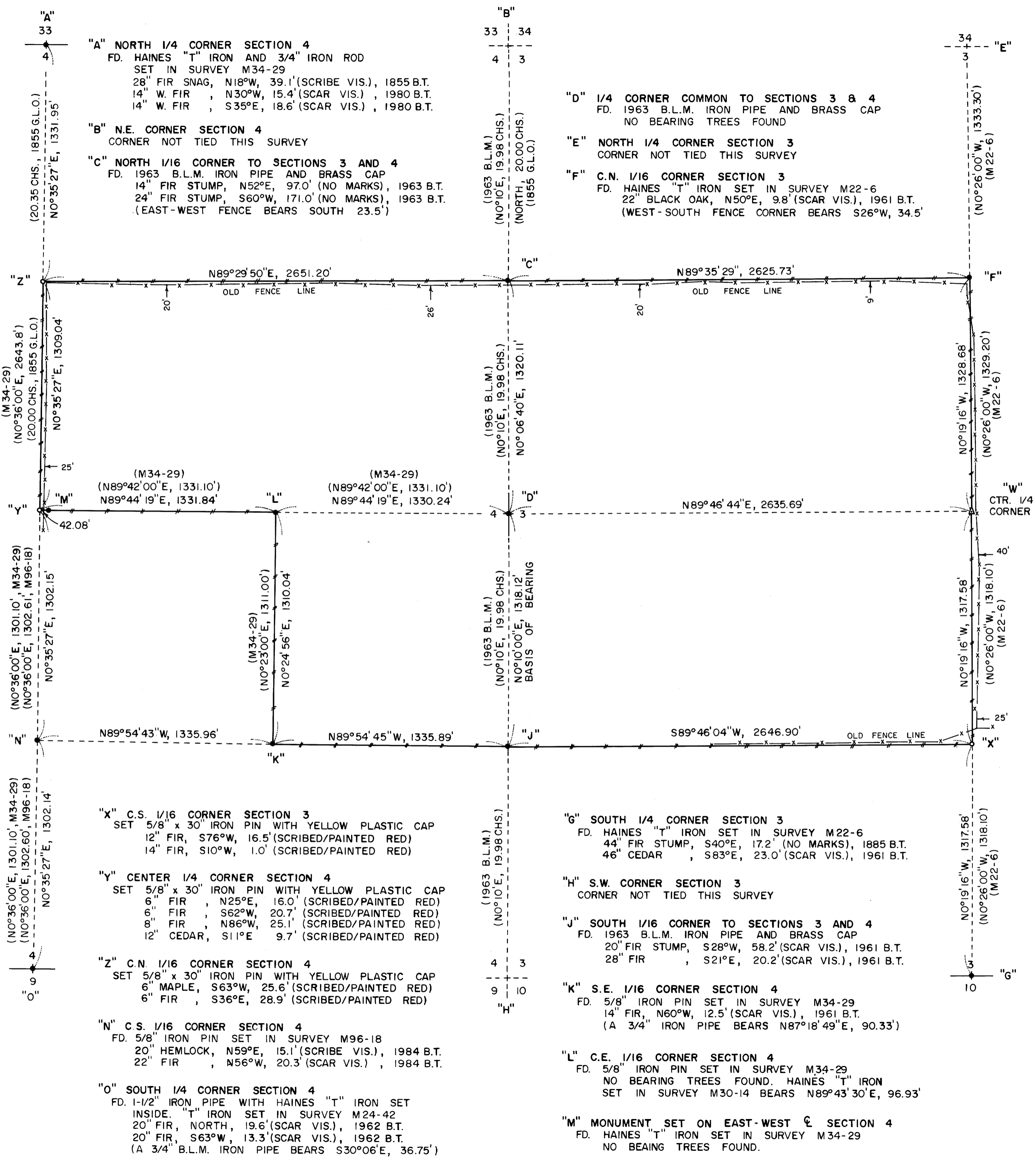


LEGEND,

- MONUMENTS FOUND AND USED FOR CONTROL
- △ COMPUTED POINT - NO MONUMENT SET
- MONUMENTS SET, 5/8" x 30" IRON PINS WITH YELLOW PLASTIC CAPS. CAPS STAMPED "ROBERTS P.L.S. 1039"
- BLAZED AND PAINTED THIS SURVEY
- () DATA OF RECORD - 1855 G.L.O. SURVEY BY HARVEY GORDON AND CHARLES GARDNER - SURVEY M22-6 BY WILFORD HAINES IN 1961 - SURVEY M24-42 BY WILFORD HAINES IN 1962 - A 1963 B.L.M. SURVEY - SURVEY M34-29 BY WILFORD HAINES IN 1967 - SURVEY M96-18 BY DONALD BRANCH IN 1984
- BASIS OF BEARING - LINE "D-J" FROM 1963 B.L.M. SURVEY
- DISTANCES TO B.T.'S ARE CENTER MEASURE
- ALL NEW B.T.'S ARE SCRIBED AND HAVE A METAL WASHER STAMPED P.L.S. 1039 NAILED TO LOWER BLAZE. SCRIBED BLAZES ARE PAINTED RED.

REGISTERED
 PROFESSIONAL
 LAND SURVEYOR
L. D. Roberts
 OREGON
 L. D. ROBERTS
 1039
 EXPIRES 12-31-96

NARRATIVE, THE PURPOSE OF THIS SURVEY IS TO BLAZE AND PAINT THE FOLLOWING LINES; 1) LINE "Z-C", 2) LINE "C-F", 3) LINE "F-W-X", 4) LINE "X-J", 5) LINE "J-K", 6) LINE "K-L", 7) LINE "L-Y" AND LINE "Y-Z". ALSO THE FOLLOWING CORNERS WERE SET IN THIS SURVEY. 1) MONUMENT "X", THE C.S. 1/16 CORNER SECTION 3, 2) MONUMENT "Y", THE CENTER 1/4 CORNER SECTION 4, AND 3) MONUMENT "Z", THE C.N. 1/16 CORNER SECTION 4. THE NORTH-SOUTH CENTERLINE OF SECTION 3 WAS ESTABLISHED BY HOLDING MONUMENTS "F" AND "G" AS SET BY WILFORD HAINES IN SURVEY M22-6. COMPUTED POINT "W" (THE CENTER 1/4 CORNER) AND MONUMENT "X" (THE C.S. 1/16 CORNER) WERE ESTABLISHED BY SINGLE PROPORTIONATE MEASURE. SAID PROPORTION WAS BASED UPON WILFORD HAINES DATA OF RECORD OF 1329.2 FEET FOR LINE "F-W", 1318.1 FEET FOR LINE "W-X" AND 1318.1 FEET FOR LINE "X-G". THE EAST-WEST CENTERLINE OF SECTION 4 WAS ESTABLISHED BY HOLDING MONUMENTS "L" AND "M" AS SHOWN IN SURVEY M34-29 BY WILFORD HAINES IN 1967. THE NORTH-SOUTH CENTERLINE OF SECTION 4 WAS ESTABLISHED BY HOLDING MONUMENTS "A" AND "O" AS SHOWN IN SURVEY M34-29 BY WILFORD HAINES IN 1967. THE CENTER 1/4 CORNER, MONUMENT "Y", WAS SET BY INTERSECTION AS FOLLOWS. LINE "L-M" WAS EXTENDED WESTERLY TO ITS INTERSECTION WITH LINE "A-O" AT POINT "Y". THUS THE BEARINGS AND DISTANCES OF S89°44'19"W, 1331.84 FEET FOR LINE "L-Y", N0°35'27"E, 2604.28 FEET FOR LINE "O-Y" AND N0°35'27"E, 2641.00 FEET FOR LINE "Y-A". MONUMENT "Z", THE C.N. 1/16 CORNER, WAS SET BY PROPORTIONATE MEASURE AS FOLLOWS. SAID PROPORTION WAS BASED UPON ORIGINAL 1855 G.L.O. DATA OF 20.00 CHAINS FOR LINE "Y-Z" AND 20.35 CHAINS FOR LINE "Z-A". A CLOSED RANDOM PROPERTY LINE TRAVERSE, USING A WILD T-16 THEODOLITE AND A DI-4L E.D.M., WAS RUN ALONG ALL PROPERTY LINES TO BE BLAZED AND PAINTED. OFFSETS WERE COMPUTED FROM THIS PROPERTY LINE TRAVERSE TO THE TRUE PROPERTY LINE AND SAID OFFSETS WERE USED TO BLAZE AND PAINT THE TRUE LINE IN THE FIELD.



"A" NORTH 1/4 CORNER SECTION 4
 FD. HAINES "T" IRON AND 3/4" IRON ROD
 SET IN SURVEY M34-29
 28" FIR SNAG, N18°W, 39.1' (SCRIBED VIS.), 1855 B.T.
 14" W. FIR, N30°W, 15.4' (SCAR VIS.), 1980 B.T.
 14" W. FIR, S35°E, 18.6' (SCAR VIS.), 1980 B.T.

"B" N.E. CORNER SECTION 4
 CORNER NOT TIED THIS SURVEY

"C" NORTH 1/16 CORNER TO SECTIONS 3 AND 4
 FD. 1963 B.L.M. IRON PIPE AND BRASS CAP
 14" FIR STUMP, N52°E, 97.0' (NO MARKS), 1963 B.T.
 24" FIR STUMP, S60°W, 171.0' (NO MARKS), 1963 B.T.
 (EAST-WEST FENCE BEARS SOUTH 23.5')

"D" 1/4 CORNER COMMON TO SECTIONS 3 & 4
 FD. 1963 B.L.M. IRON PIPE AND BRASS CAP
 NO BEARING TREES FOUND

"E" NORTH 1/4 CORNER SECTION 3
 CORNER NOT TIED THIS SURVEY

"F" C.N. 1/16 CORNER SECTION 3
 FD. HAINES "T" IRON SET IN SURVEY M22-6
 22" BLACK OAK, N50°E, 9.8' (SCAR VIS.), 1961 B.T.
 (WEST-SOUTH FENCE CORNER BEARS S26°W, 34.5')

"X" C.S. 1/16 CORNER SECTION 3
 SET 5/8" x 30" IRON PIN WITH YELLOW PLASTIC CAP
 12" FIR, S76°W, 16.5' (SCRIBED/PAINTED RED)
 14" FIR, S10°W, 1.0' (SCRIBED/PAINTED RED)

"Y" CENTER 1/4 CORNER SECTION 4
 SET 5/8" x 30" IRON PIN WITH YELLOW PLASTIC CAP
 6" FIR, N25°E, 16.0' (SCRIBED/PAINTED RED)
 6" FIR, S62°W, 20.7' (SCRIBED/PAINTED RED)
 8" FIR, N86°W, 25.1' (SCRIBED/PAINTED RED)
 12" CEDAR, S11°E, 9.7' (SCRIBED/PAINTED RED)

"Z" C.N. 1/16 CORNER SECTION 4
 SET 5/8" x 30" IRON PIN WITH YELLOW PLASTIC CAP
 6" MAPLE, S63°W, 25.6' (SCRIBED/PAINTED RED)
 6" FIR, S36°E, 28.9' (SCRIBED/PAINTED RED)

"N" C.S. 1/16 CORNER SECTION 4
 FD. 5/8" IRON PIN SET IN SURVEY M96-18
 20" HEMLOCK, N59°E, 15.1' (SCRIBED VIS.), 1984 B.T.
 22" FIR, N56°W, 20.3' (SCAR VIS.), 1984 B.T.

"O" SOUTH 1/4 CORNER SECTION 4
 FD. 1-1/2" IRON PIPE WITH HAINES "T" IRON SET
 INSIDE. "T" IRON SET IN SURVEY M24-42
 20" FIR, NORTH, 19.6' (SCAR VIS.), 1962 B.T.
 20" FIR, S63°W, 13.3' (SCAR VIS.), 1962 B.T.
 (A 3/4" B.L.M. IRON PIPE BEARS S30°06'E, 36.75')

"G" SOUTH 1/4 CORNER SECTION 3
 FD. HAINES "T" IRON SET IN SURVEY M22-6
 44" FIR STUMP, S40°E, 17.2' (NO MARKS), 1885 B.T.
 46" CEDAR, S83°E, 23.0' (SCAR VIS.), 1961 B.T.

"H" S.W. CORNER SECTION 3
 CORNER NOT TIED THIS SURVEY

"J" SOUTH 1/16 CORNER TO SECTIONS 3 AND 4
 FD. 1963 B.L.M. IRON PIPE AND BRASS CAP
 20" FIR STUMP, S28°W, 58.2' (SCAR VIS.), 1961 B.T.
 28" FIR, S21°E, 20.2' (SCAR VIS.), 1961 B.T.

"K" S.E. 1/16 CORNER SECTION 4
 FD. 5/8" IRON PIN SET IN SURVEY M34-29
 14" FIR, N60°W, 12.5' (SCAR VIS.), 1961 B.T.
 (A 3/4" IRON PIPE BEARS N87°18'49"E, 90.33')

"L" C.E. 1/16 CORNER SECTION 4
 FD. 5/8" IRON PIN SET IN SURVEY M34-29
 NO BEARING TREES FOUND. HAINES "T" IRON
 SET IN SURVEY M30-14 BEARS N89°43'30"E, 96.93'

"M" MONUMENT SET ON EAST-WEST SECTION 4
 FD. HAINES "T" IRON SET IN SURVEY M34-29
 NO BEARING TREES FOUND.