

RECORD OF SURVEY
 FOR: PORT BLAKELY TIMBER COMPANY
 NE 1/4, SECTION 12, T.20S., R.12W., W.M.
 DOUGLAS COUNTY, OREGON
 6/11/96

COUNTY SURVEYORS FILE DATA
 DO NOT REMOVE FROM OFFICE

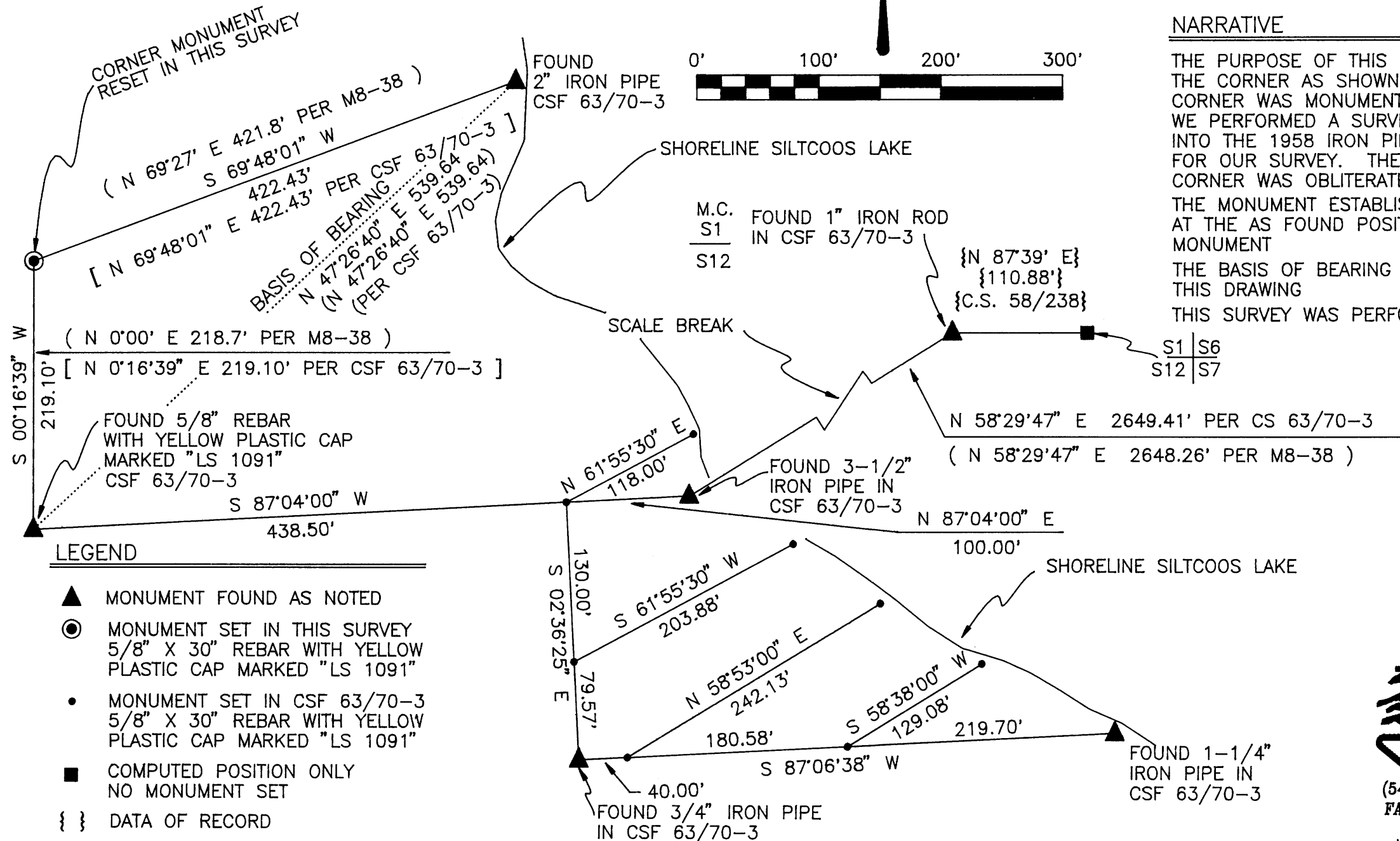
FILED

Date: 7-11-96 By: JP
 This survey consists of:
 Map: M125-27
 Narrative:
 Corner Rpt:

DOUGLAS COUNTY
 SURVEYOR CB

NARRATIVE

THE PURPOSE OF THIS SURVEY WAS TO REMONUMENT THE CORNER AS SHOWN ON THIS DRAWING. THIS CORNER WAS MONUMENTED IN 1958 (M8-38). IN 1991 WE PERFORMED A SURVEY (CSF 63/70-3) IN WHICH WE TIED INTO THE 1958 IRON PIPE AND HELD IT AS CONTROL FOR OUR SURVEY. THE PREVIOUS MONUMENT AT THIS CORNER WAS OBLITERATED BY A LANDSLIDE. THE MONUMENT ESTABLISHED IN THIS SURVEY WAS SET AT THE AS FOUND POSITION OF THE PREVIOUS MONUMENT. THE BASIS OF BEARING FOR THIS SURVEY IS AS SHOWN ON THIS DRAWING. THIS SURVEY WAS PERFORMED USING A PENTAX TOTAL STATION

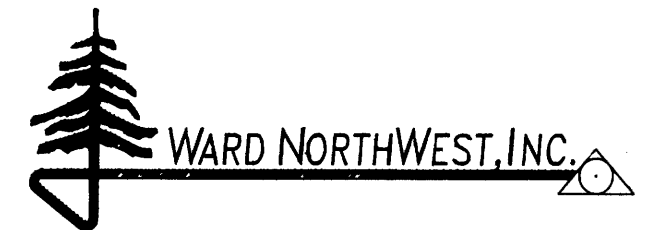


LEGEND

- ▲ MONUMENT FOUND AS NOTED
- MONUMENT SET IN THIS SURVEY
5/8" X 30" REBAR WITH YELLOW PLASTIC CAP MARKED "LS 1091"
- MONUMENT SET IN CSF 63/70-3
5/8" X 30" REBAR WITH YELLOW PLASTIC CAP MARKED "LS 1091"
- COMPUTED POSITION ONLY
NO MONUMENT SET
- { } DATA OF RECORD

REGISTERED
 PROFESSIONAL
 LAND SURVEYOR
Robert B. Ward Jr.
 OREGON
 JULY 30, 1976
 ROBERT B. WARD JR.
 1081

P.L.S. EXPIRATION: 6/30/98



WARD NORTHWEST, INC.
 (541) 997-9201 P.O. BOX 105
 FAX: 541-997-3546 FLORENCE, OREGON 97439
 JOB #96-17.DWG DRAWN BY: WRD

MAP FILE M125-27

MAP FILE M125-27