

SURVEY FOR:

IP TIMBER LANDS OPERATING CO., LTD  
711 PORT DOCK ROAD  
REEDSPORT, OR. 97467

SURVEY BY:

CLYDE F. MULKINS  
TIMBER CRUISING & ENGINEERING  
P.O. BOX 750  
COOS BAY, OR. 97420

**COUNTY SURVEYORS FILE DATA**  
**DO NOT REMOVE FROM OFFICE**

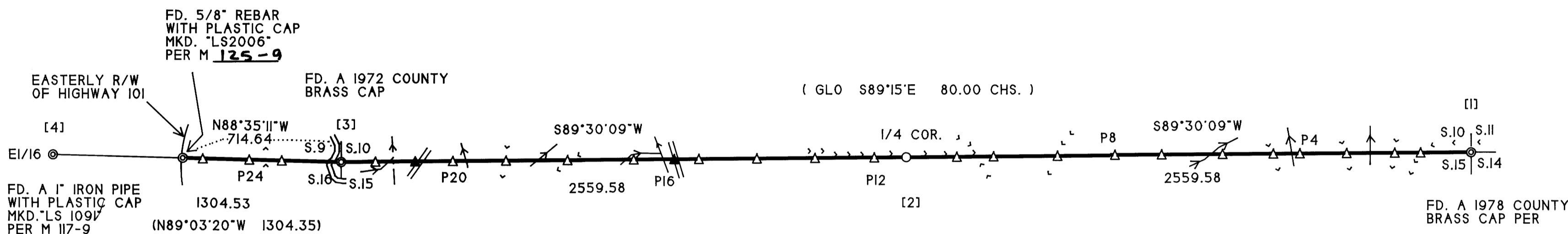
FILED  
Date: 6/6/96 By: PFC  
This survey consists of:  
Map: M 125-10  
Narrative: \_\_\_\_\_  
Corner Rpt: \_\_\_\_\_  
DOUGLAS COUNTY SURVEYOR

MAP FILE M 125-10

BOUNDARY LINE SURVEY  
LOCATED BETWEEN SECTIONS 10 AND 15, AND 9 AND 16, T.21 S., R.12 W., W.M.  
DOUGLAS COUNTY, OREGON



EXPIRES 12-31-96



SCALE 1" = 400'  
APRIL 3, 1996

LEGEND

- ⊙ FD. CORNERS AS SHOWN
- SET 3/4" X 36" ALUM. ROD WITH A 3 1/4" I.P.T.O. ALUM. CAP ( WITH MAG. INSERT)
- ↑ 6" ALUM. POST - THESE LINES ARE BLAZED, PAINTED, AND FLAGGED
- ▲ CROSSING POST
- [ ] CORNER REF. NO.
- ( ) 1857 GLO DISTANCE AND BEARING
- ←←← CREEK / DRAW
- <<< RIDGES
- == ROAD

POSTING NOTES

POST	DIST.	DIR.	TO	TREE	REFERENCE	DIST.
1	229	E	NE SEC	17" DF	BEARS N48°E	14.5
2	346	E	-	31" HEMLOCK	S01°W	10.9
3	564	E	-	12" HEMLOCK	S23°E	3.7
4	776	E	-	13" ALDER	S14°E	4.5
5	896	E	-	36" HEMLOCK	N02°W	4.0
6	1126	E	-	17" SPRUCE	S87°E	31.3
7	1402	E	-	14" SPRUCE	N85°W	7.3
8	1613	E	-	10" ALDER	S47°E	19.8
9	1874	E	-	19" SPRUCE	N32°W	14.2
10	2164	E	-	13" HEMLOCK	N87°W	14.7
11	2330	E	-	21" HEMLOCK	S68°W	1.7
12	145	E	N 1/4	31" HEMLOCK	N37°E	12.5
13	414	E	-	10" DF	S47°W	9.4
14	677	E	-	20" DF	N29°E	13.2
15	940	E	-	25" SPRUCE	N60°E	7.7
16	1052	E	-	POWER POLE	N09°E	55.9
17	1235	E	-	19" ALDER	S72°W	17.4
18	1535	E	-	16" DF	S39°W	1.1
19	1814	E	-	24" SPRUCE	N03°E	20.5
20	2055	E	-	32" SPRUCE	N45°E	10.7
21	2226	E	-	13" ALDER	N86°W	6.2
22	2406	E	-	18" SPRUCE	S02°E	4.9
23	269	E	NE SEC	34" SPRUCE	S30°W	13.6
24	416	E	-	30" SPRUCE	S85°W	26.5
25	626	E	-	18" SPRUCE	N41°E	2.0

CORNER NOTES

CORNER #1: FD. A 1978 COUNTY BRASS CAP AT THE CORNER OF SECTIONS 10, 11, 14, AND 15 FROM WHICH: FD. A 14" DF WITH A HEALED FACE BEARS N11°W, 11.6 FT. (RECORD N13°W); FD. A 21" DF WITH A HEALED FACE BEARS N50°E, 15.4 FT. (RECORD 15.3 FT.); FD. A 10" DF WITH A HEALED FACE BEARS S10°E, 14.5 FT. (RECORD S12°E); FD. A 14" DF WITH A HEALED FACE BEARS S33°W, 32.2 FT. (RECORD S32°W, 32.1 FT.); FD. A 22" CEDAR STUMP WITH OLD BLAZE BEARS N88°W, 13.2 FT.; FD. A 36" CEDAR STUMP WITH A ROTTEN FACE BEARS S69°W, 13.9 FT.

CORNER #2: SET AN I.P.T.O. 3/4" X 36" ALUM. ROD WITH A 3 1/4" ALUM. CAP AT THE 1/4 CORNER BETWEEN SECTIONS 10 AND 15 FROM WHICH: 1 SCRIBED "1/4 S10 BT" ON AN 18" HEMLOCK BEARS N10°W, 19.9 FT.; 1 SCRIBED "1/4 S15 BT" ON A 14" DF BEARS S62°E, 11.9 FT.; 1 SCRIBED "1/4 S15 BT" ON A 12" HEMLOCK BEARS S49°W, 7.7 FT.; 1 SCRIBED "1/4 S10 BT" ON A 27" HEMLOCK BEARS N73°W, 25.1 FT.; FD. AN UNRECORDED 3/4" IRON PIPE BEARS S78°W, 5.6 FT.

CORNER #3: FD. A 1972 COUNTY BRASS CAP AT THE CORNER OF SECTIONS 9, 10, 15, AND 16 FROM WHICH: FD. A 40" DF SNAG BEARS S59°E, (RECORD 105.0 FT. SLOPE DISTANCE); FD. REMAINS OF RECORD DF STUMP BEARS N46°W, (RECORD 60.5 FT. SLOPE DIST.); THE RECORD 14" ALDER BEARS N75°W, 37.0 FT. - GONE; THE RECORD 6" ALDER BEARS N52 1/2°E, 8.6 FT. - WINDFALL; THE RECORD 8" ALDER BEARS S77°E, 12.0 FT. - WINDFALL; FD. A 20" ALDER (WITH COUNTY TAG) BEARS S43°W, 11.6 FT.; 1 SCRIBED "T21S R12W S9 BT" ON A 16" SPRUCE BEARS N35°W, 60.2 FT.; 1 BARK SCRIBED "T21S R12W S10 BT" ON A 14" ALDER BEARS N41°E, 26.5 FT.; 1 SCRIBED "T21S R12W S16 BT" ON A 9" SPRUCE BEARS S89°W, 42.2 FT.

CORNER #4: FD. A 1" IRON PIPE WITH PLASTIC CAP MKD. "LS 1091" AT THE E/16 CORNER BETWEEN SECTIONS 9 AND 16 PER M 117-9.

NARRATIVE

THE PURPOSE OF THIS SURVEY WAS TO MARK THE PROPERTY LINES AS SHOWN FOR FOREST MANAGEMENT OPERATIONS. RECORDS USED FOR THIS SURVEY WERE CORNER RENEWALS 34 AND 58, T.21 S., R.12 W.; AND M117-9. THE EAST 1/4 MILE COMMON TO SECTIONS 9 AND 16 WAS A CLOSED LOOP TRAVERSE. ONLY THE PORTION OF THE LINE EAST OF HIGHWAY "101" WAS MARKED.

THE NORTH LINE OF SECTION 15 WAS ALSO SURVEYED BY A CLOSED LOOP TRAVERSE. THE 1/4 CORNER OF SECTIONS 10 AND 15 WAS ESTABLISHED BY SINGLE PROPORTION MEASUREMENT. AN UNRECORDED 3/4" IRON PIPE AT THE APPROXIMATE LOCATION OF THE 1/4 CORNER WAS NOT ACCEPTED. THIS CORNER POSITION WAS MONUMENTED BY COOS BAY PULP CORP. IN 1958 FROM TWO BT'S FROM THEIR 1954 NOTES AS: 40" SPRUCE WITH AN "X" BEARS N33°W, 18.0 FT., NOW A ROTTEN STUMP; 44" SPRUCE WITH AN "X" BEARS S71°W, 37.5 FT., NOW A 50" SNAG WITH A SNAPPED OUT TOP AT 25 FT. SEE CORNER NOTES.

THE FIELD WORK WAS PERFORMED BETWEEN FEBRUARY 12 AND APRIL 1, 1996. ASSISTING ME WITH THIS SURVEY WERE TROY RAMBO AND RANDY MADDEN. A TOPCON GTS-301 TOTAL STATION WAS USED FOR TRAVERSING.

↑  
BASIS OF BEARING - SOLAR OBSERVATION

MAP FILE M 125-10