

LEGEND
Corner found, 5/8" iron rod unless noted
Corner set, 5/8" x 30" iron rod with aluminum cap mkd. "Shaner Engr. RLS 430"
Corner computed, not set
Property line
Fence line

(Record R 3)
Highway Curve Data
Δ = 12°52'
D = 6°00'
R = 955.40
T = 107.70
L = 214.40

R/W Curve Data
Δ = 8°26'29"
D = 6°11'29"
R = 925.40
L = 136.34
LC = (Above)

R/W Curve Data
Δ = 3°46'16"
D = 6°11'29"
R = 925.40
L = 60.91
LC = (Above)



NARRATIVE

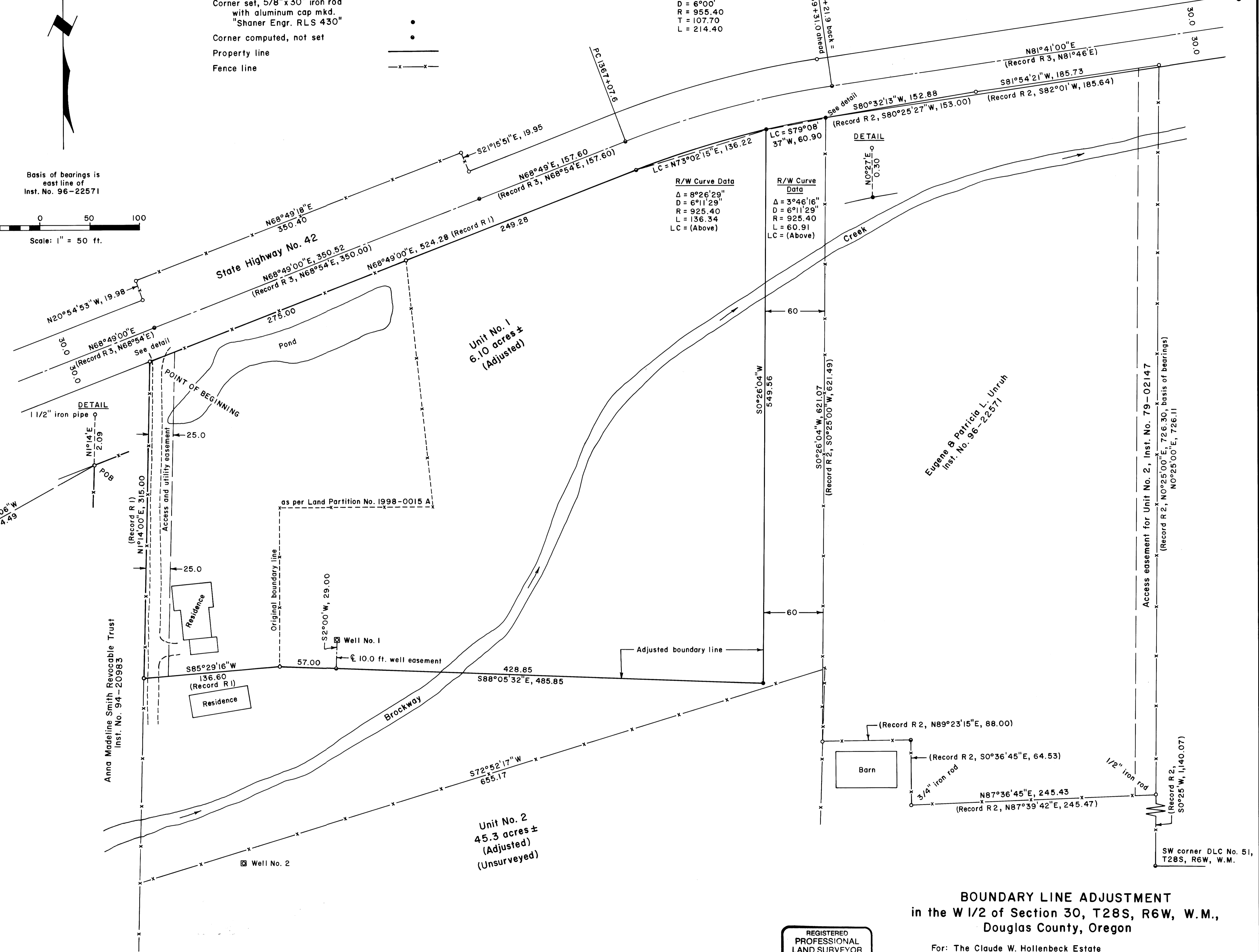
The survey was accomplished for the purpose of adjusting the boundary line between Units 1 & 2 to the positions as shown hereon. (See Plat of Land Partition 1998-0015 A for earlier line positions.) The following surveys, on file at the Douglas County Surveyor's Office, were referred to:

Ref. No. (R)	Map File No.	Surveyor	Date
1	1998-0015 A	Shaner	1997
2	M75-15	Baughman	1979
3	Ore. State Highway No. 42 R/W map 6B-28-22	Oregon State Highway Dept.	1948

The survey was done in May, 1998, using a Jena 0°00'01" theodolite and a Mac II electronic distance meter.

Keith L. Cubic 5/12/98
Planning Director Date

Planning Dept. File No. 98-105



REGISTERED PROFESSIONAL LAND SURVEYOR
Bruce A. Shaner
OREGON OCT 4, 1957
BRUCE A. SHANER
430
Renews June 30, 1998

BOUNDARY LINE ADJUSTMENT
in the W 1/2 of Section 30, T28S, R6W, W.M.,
Douglas County, Oregon

For: The Claude W. Hollenbeck Estate
Walter C. Hollenbeck, Repr.
P.O. Box 31
Winston, Oregon 97496

By: Shaner Engineering, Inc.
P.O. Box 1430
Roseburg, Oregon 97470

May 7, 1998

COUNTY SURVEYORS FILE DATA
DO NOT REMOVE FROM OFFICE