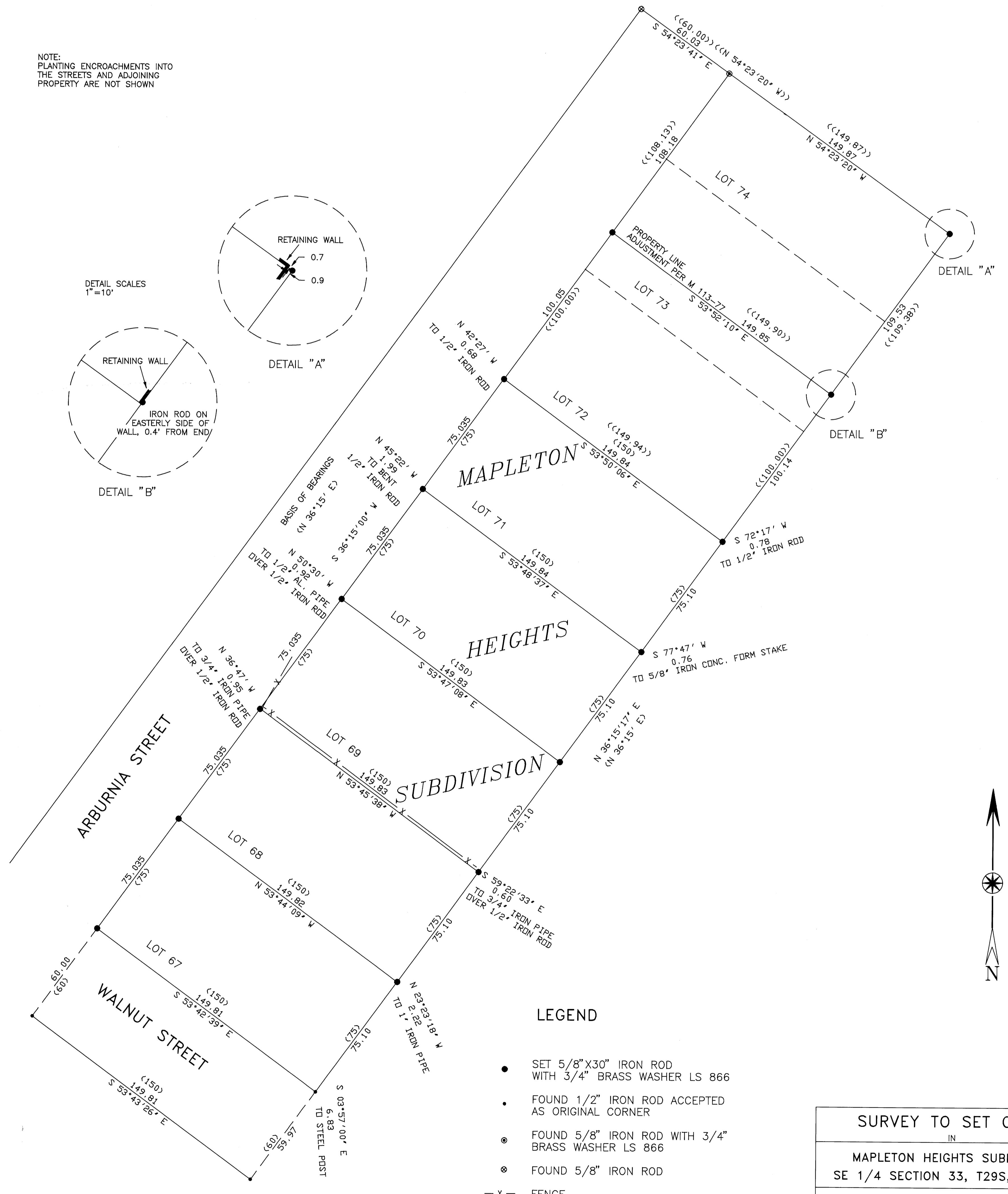


FILED  
 Date: 8-1-97 by: JP  
 This survey consists of:  
 Map: M124-58  
 Narrative:  
 Corner Rpt:  
 DOUGLAS COUNTY SURVEYOR

**SURVEY NARRATIVE**  
**PURPOSE:** TO RE-ESTABLISH PROPERTY CORNERS AFTER CONSTRUCTION.  
**BACKGROUND:** ORIGINAL MONUMENTS WERE DISTURBED DUE EARTHWORK AND UTILITY INSTALLATION. MONUMENTS WERE ADMITTEDLY RESET BY CONTRACTORS AND OTHERS. UNDISTURBED FOUND MONUMENTS ALONG WALNUT STREET AND AT THE NORTHERLY END OF THE BLOCK WERE IN GOOD AGREEMENT WITH THE ORIGINAL SURVEY AND M 113-77. THESE MONUMENTS WERE USED AS THE BASIS OF RE-ESTABLISHING CORNER POSITIONS.  
**PROCEDURE:** THE BASIS OF BEARING WAS ESTABLISHED FROM THE TWO TERMINAL MONUMENTS SHOWN ALONG THE EASTERLY SIDE OF ARBURNIA STREET. WALNUT STREET WIDTH WAS HELD AT 60 FEET. THEN THE INTERVENING CORNERS WERE SET ON LINE AT PROPORTIONAL DISTANCE PER RECORD OF MAPLETON HEIGHTS AND M 113-77.  
 THE MOST EASTERLY CORNER OF LOT 74 WAS RE-ESTABLISHED AT RECORD DISTANCE AND BEARING PER M 113-77. FROM THE MOST EASTERLY CORNER OF LOT 74, INTERVENING CORNERS WERE SET ON LINE, AT PROPORTIONAL DISTANCE PER M 113-77 AND MAPLETON HEIGHTS, TO THE MOST SOUTHERLY CORNER OF LOT 67.  
 THE NORTHWEST CORNER OF ARBURNIA AND THE SOUTHEAST CORNER OF WALNUT STREET ARE SHOWN TO ILLUSTRATE AGREEMENT WITH CONTROLLING MONUMENTS.  
 TIES FROM SET MONUMENTS TO FOUND MONUMENTS THAT WERE NOT USED TO CONTROL THE SURVEY ARE SHOWN ON THE PLAT.  
 SURVEY, CALCULATIONS, AND DRAFTING BY WILLIAM J. RUPPERT.  
**INSTRUMENTS:** T60D THEODOLITE, MAC II EDM AND 100 FT STEEL TAPE.

NOTE:  
 PLANTING ENCROACHMENTS INTO THE STREETS AND ADJOINING PROPERTY ARE NOT SHOWN



- LEGEND**
- SET 5/8"X30" IRON ROD WITH 3/4" BRASS WASHER LS 866
  - FOUND 1/2" IRON ROD ACCEPTED AS ORIGINAL CORNER
  - ⊙ FOUND 5/8" IRON ROD WITH 3/4" BRASS WASHER LS 866
  - ⊙ FOUND 5/8" IRON ROD
  - x - FENCE
  - ( ) RECORD PER MAPLETON HEIGHTS
  - (( )) RECORD PER M113-77

<b>SURVEY TO SET CORNERS</b>	
IN	
MAPLETON HEIGHTS SUBDIVISION	
SE 1/4 SECTION 33, T29S, R5W, WM	
FOR: LES BOVEE MYRTLE CREEK, OR.	
REGISTERED OREGON LAND SURVEYOR <i>William J. Ruppert</i>	Surveyed by: <b>WILLIAM J. RUPPERT</b> P.O. BOX 1564 MYRTLE CREEK, OR 97457
JULY 12, 1968 WILLIAM J. RUPPERT 866	SCALE 1"=30'      JULY 1997 SHEET 1 OF 1
MY REGISTRATION EXPIRES 12/31/1998	