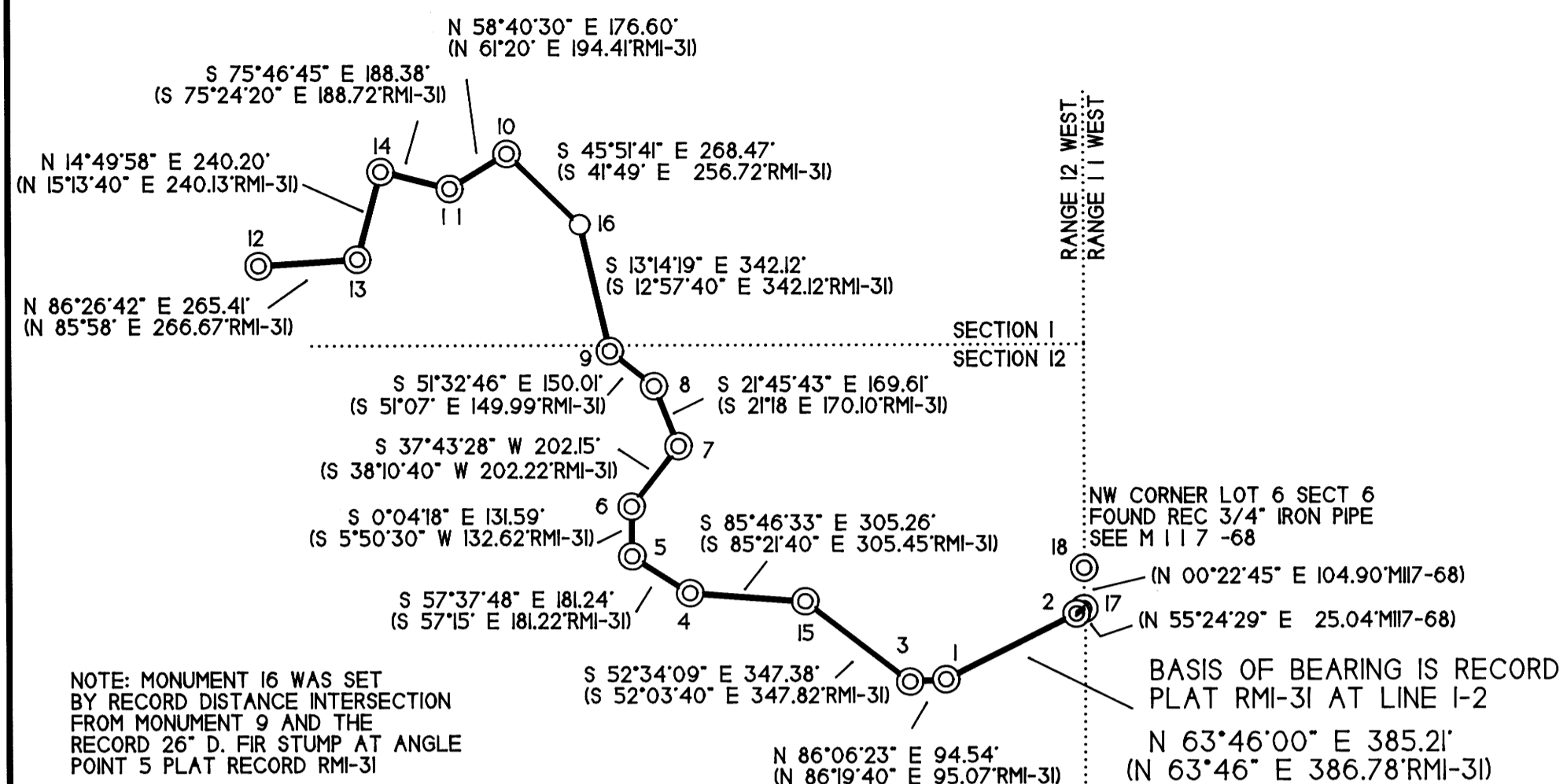


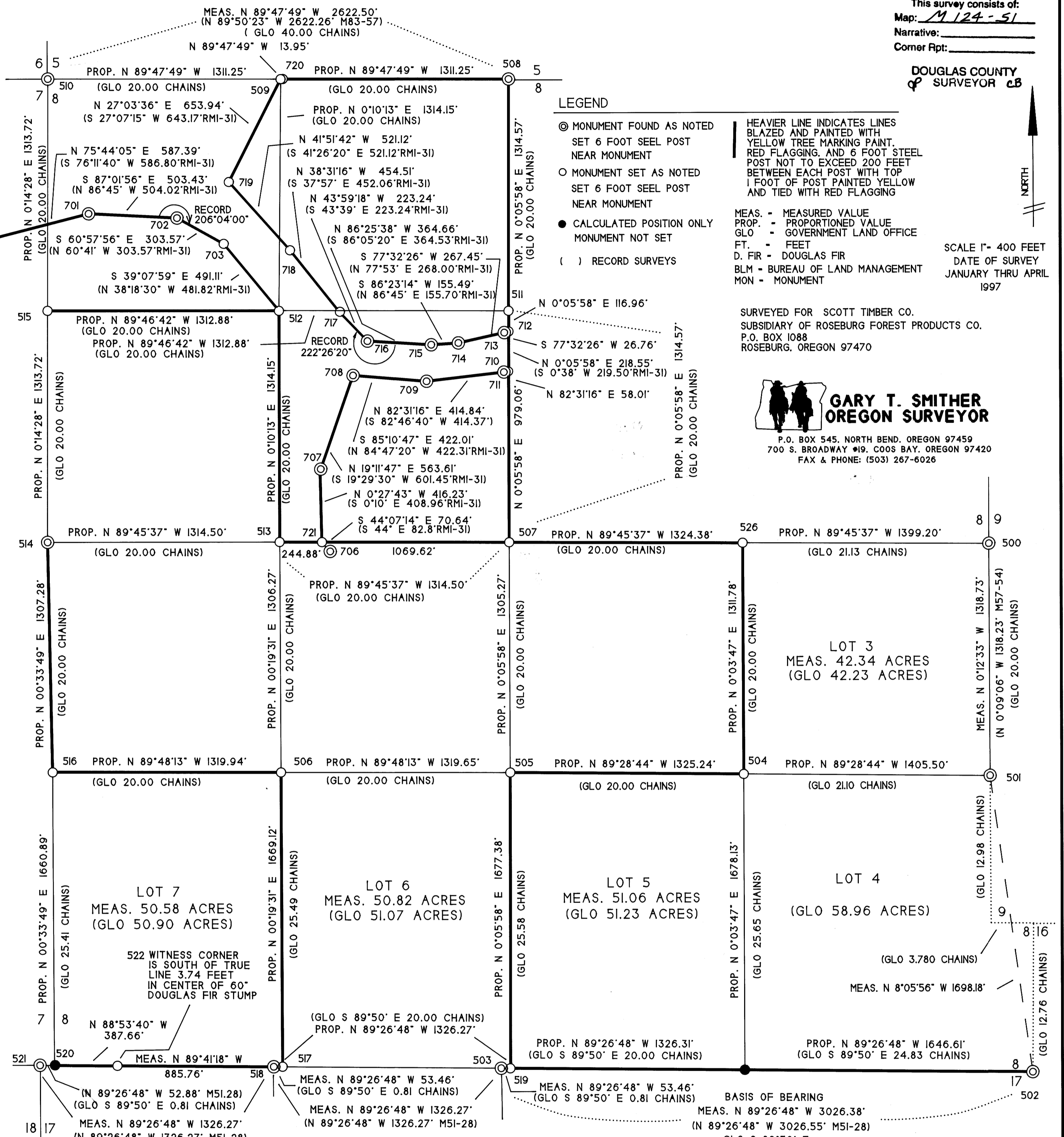
TOWNSHIP 22 SOUTH RANGE 12 WEST SECTION 12 NE 1/4 SECTION 1 SE 1/4



NOTE: MONUMENT 16 WAS SET BY RECORD DISTANCE INTERSECTION FROM MONUMENT 9 AND THE RECORD 26" D. FIR STUMP AT ANGLE POINT 5 PLAT RECORD RMI-31

TOWNSHIP 22 SOUTH RANGE 12 WEST SECTION 8

- 719 SET 3 1/4" ALUMINUM CAP ON 3/4" X 36" ALUMINUM ROD MARKED: RLS 2485 1997
720 SET 3 1/4" ALUMINUM CAP ON 3/4" X 36" ALUMINUM ROD MARKED: RLS 2485 1997
721 SET 3 1/4" ALUMINUM CAP ON 3/4" X 36" ALUMINUM ROD MARKED: RLS 2485 1997
722 SET 3 1/4" ALUMINUM CAP ON 3/4" X 36" ALUMINUM ROD MARKED: RLS 2485 1997
723 SET 3 1/4" ALUMINUM CAP ON 3/4" X 36" ALUMINUM ROD MARKED: RLS 2485 1997
724 SET 3 1/4" ALUMINUM CAP ON 3/4" X 36" ALUMINUM ROD MARKED: RLS 2485 1997
725 SET 3 1/4" ALUMINUM CAP ON 3/4" X 36" ALUMINUM ROD MARKED: RLS 2485 1997
726 SET 3 1/4" ALUMINUM CAP ON 3/4" X 36" ALUMINUM ROD MARKED: RLS 2485 1997
727 SET 3 1/4" ALUMINUM CAP ON 3/4" X 36" ALUMINUM ROD MARKED: RLS 2485 1997
728 SET 3 1/4" ALUMINUM CAP ON 3/4" X 36" ALUMINUM ROD MARKED: RLS 2485 1997
729 SET 3 1/4" ALUMINUM CAP ON 3/4" X 36" ALUMINUM ROD MARKED: RLS 2485 1997
730 SET 3 1/4" ALUMINUM CAP ON 3/4" X 36" ALUMINUM ROD MARKED: RLS 2485 1997
731 SET 3 1/4" ALUMINUM CAP ON 3/4" X 36" ALUMINUM ROD MARKED: RLS 2485 1997
732 SET 3 1/4" ALUMINUM CAP ON 3/4" X 36" ALUMINUM ROD MARKED: RLS 2485 1997
733 SET 3 1/4" ALUMINUM CAP ON 3/4" X 36" ALUMINUM ROD MARKED: RLS 2485 1997
734 SET 3 1/4" ALUMINUM CAP ON 3/4" X 36" ALUMINUM ROD MARKED: RLS 2485 1997
735 SET 3 1/4" ALUMINUM CAP ON 3/4" X 36" ALUMINUM ROD MARKED: RLS 2485 1997
736 SET 3 1/4" ALUMINUM CAP ON 3/4" X 36" ALUMINUM ROD MARKED: RLS 2485 1997
737 SET 3 1/4" ALUMINUM CAP ON 3/4" X 36" ALUMINUM ROD MARKED: RLS 2485 1997
738 SET 3 1/4" ALUMINUM CAP ON 3/4" X 36" ALUMINUM ROD MARKED: RLS 2485 1997
739 SET 3 1/4" ALUMINUM CAP ON 3/4" X 36" ALUMINUM ROD MARKED: RLS 2485 1997
740 SET 3 1/4" ALUMINUM CAP ON 3/4" X 36" ALUMINUM ROD MARKED: RLS 2485 1997
741 SET 3 1/4" ALUMINUM CAP ON 3/4" X 36" ALUMINUM ROD MARKED: RLS 2485 1997
742 SET 3 1/4" ALUMINUM CAP ON 3/4" X 36" ALUMINUM ROD MARKED: RLS 2485 1997
743 SET 3 1/4" ALUMINUM CAP ON 3/4" X 36" ALUMINUM ROD MARKED: RLS 2485 1997
744 SET 3 1/4" ALUMINUM CAP ON 3/4" X 36" ALUMINUM ROD MARKED: RLS 2485 1997
745 SET 3 1/4" ALUMINUM CAP ON 3/4" X 36" ALUMINUM ROD MARKED: RLS 2485 1997
746 SET 3 1/4" ALUMINUM CAP ON 3/4" X 36" ALUMINUM ROD MARKED: RLS 2485 1997
747 SET 3 1/4" ALUMINUM CAP ON 3/4" X 36" ALUMINUM ROD MARKED: RLS 2485 1997
748 SET 3 1/4" ALUMINUM CAP ON 3/4" X 36" ALUMINUM ROD MARKED: RLS 2485 1997
749 SET 3 1/4" ALUMINUM CAP ON 3/4" X 36" ALUMINUM ROD MARKED: RLS 2485 1997
750 SET 3 1/4" ALUMINUM CAP ON 3/4" X 36" ALUMINUM ROD MARKED: RLS 2485 1997
751 SET 3 1/4" ALUMINUM CAP ON 3/4" X 36" ALUMINUM ROD MARKED: RLS 2485 1997
752 SET 3 1/4" ALUMINUM CAP ON 3/4" X 36" ALUMINUM ROD MARKED: RLS 2485 1997
753 SET 3 1/4" ALUMINUM CAP ON 3/4" X 36" ALUMINUM ROD MARKED: RLS 2485 1997
754 SET 3 1/4" ALUMINUM CAP ON 3/4" X 36" ALUMINUM ROD MARKED: RLS 2485 1997
755 SET 3 1/4" ALUMINUM CAP ON 3/4" X 36" ALUMINUM ROD MARKED: RLS 2485 1997
756 SET 3 1/4" ALUMINUM CAP ON 3/4" X 36" ALUMINUM ROD MARKED: RLS 2485 1997
757 SET 3 1/4" ALUMINUM CAP ON 3/4" X 36" ALUMINUM ROD MARKED: RLS 2485 1997
758 SET 3 1/4" ALUMINUM CAP ON 3/4" X 36" ALUMINUM ROD MARKED: RLS 2485 1997
759 SET 3 1/4" ALUMINUM CAP ON 3/4" X 36" ALUMINUM ROD MARKED: RLS 2485 1997
760 SET 3 1/4" ALUMINUM CAP ON 3/4" X 36" ALUMINUM ROD MARKED: RLS 2485 1997
761 SET 3 1/4" ALUMINUM CAP ON 3/4" X 36" ALUMINUM ROD MARKED: RLS 2485 1997
762 SET 3 1/4" ALUMINUM CAP ON 3/4" X 36" ALUMINUM ROD MARKED: RLS 2485 1997
763 SET 3 1/4" ALUMINUM CAP ON 3/4" X 36" ALUMINUM ROD MARKED: RLS 2485 1997
764 SET 3 1/4" ALUMINUM CAP ON 3/4" X 36" ALUMINUM ROD MARKED: RLS 2485 1997
765 SET 3 1/4" ALUMINUM CAP ON 3/4" X 36" ALUMINUM ROD MARKED: RLS 2485 1997
766 SET 3 1/4" ALUMINUM CAP ON 3/4" X 36" ALUMINUM ROD MARKED: RLS 2485 1997
767 SET 3 1/4" ALUMINUM CAP ON 3/4" X 36" ALUMINUM ROD MARKED: RLS 2485 1997
768 SET 3 1/4" ALUMINUM CAP ON 3/4" X 36" ALUMINUM ROD MARKED: RLS 2485 1997
769 SET 3 1/4" ALUMINUM CAP ON 3/4" X 36" ALUMINUM ROD MARKED: RLS 2485 1997
770 SET 3 1/4" ALUMINUM CAP ON 3/4" X 36" ALUMINUM ROD MARKED: RLS 2485 1997
771 SET 3 1/4" ALUMINUM CAP ON 3/4" X 36" ALUMINUM ROD MARKED: RLS 2485 1997
772 SET 3 1/4" ALUMINUM CAP ON 3/4" X 36" ALUMINUM ROD MARKED: RLS 2485 1997
773 SET 3 1/4" ALUMINUM CAP ON 3/4" X 36" ALUMINUM ROD MARKED: RLS 2485 1997
774 SET 3 1/4" ALUMINUM CAP ON 3/4" X 36" ALUMINUM ROD MARKED: RLS 2485 1997
775 SET 3 1/4" ALUMINUM CAP ON 3/4" X 36" ALUMINUM ROD MARKED: RLS 2485 1997
776 SET 3 1/4" ALUMINUM CAP ON 3/4" X 36" ALUMINUM ROD MARKED: RLS 2485 1997
777 SET 3 1/4" ALUMINUM CAP ON 3/4" X 36" ALUMINUM ROD MARKED: RLS 2485 1997
778 SET 3 1/4" ALUMINUM CAP ON 3/4" X 36" ALUMINUM ROD MARKED: RLS 2485 1997
779 SET 3 1/4" ALUMINUM CAP ON 3/4" X 36" ALUMINUM ROD MARKED: RLS 2485 1997
780 SET 3 1/4" ALUMINUM CAP ON 3/4" X 36" ALUMINUM ROD MARKED: RLS 2485 1997
781 SET 3 1/4" ALUMINUM CAP ON 3/4" X 36" ALUMINUM ROD MARKED: RLS 2485 1997
782 SET 3 1/4" ALUMINUM CAP ON 3/4" X 36" ALUMINUM ROD MARKED: RLS 2485 1997
783 SET 3 1/4" ALUMINUM CAP ON 3/4" X 36" ALUMINUM ROD MARKED: RLS 2485 1997
784 SET 3 1/4" ALUMINUM CAP ON 3/4" X 36" ALUMINUM ROD MARKED: RLS 2485 1997
785 SET 3 1/4" ALUMINUM CAP ON 3/4" X 36" ALUMINUM ROD MARKED: RLS 2485 1997
786 SET 3 1/4" ALUMINUM CAP ON 3/4" X 36" ALUMINUM ROD MARKED: RLS 2485 1997
787 SET 3 1/4" ALUMINUM CAP ON 3/4" X 36" ALUMINUM ROD MARKED: RLS 2485 1997
788 SET 3 1/4" ALUMINUM CAP ON 3/4" X 36" ALUMINUM ROD MARKED: RLS 2485 1997
789 SET 3 1/4" ALUMINUM CAP ON 3/4" X 36" ALUMINUM ROD MARKED: RLS 2485 1997
790 SET 3 1/4" ALUMINUM CAP ON 3/4" X 36" ALUMINUM ROD MARKED: RLS 2485 1997
791 SET 3 1/4" ALUMINUM CAP ON 3/4" X 36" ALUMINUM ROD MARKED: RLS 2485 1997
792 SET 3 1/4" ALUMINUM CAP ON 3/4" X 36" ALUMINUM ROD MARKED: RLS 2485 1997
793 SET 3 1/4" ALUMINUM CAP ON 3/4" X 36" ALUMINUM ROD MARKED: RLS 2485 1997
794 SET 3 1/4" ALUMINUM CAP ON 3/4" X 36" ALUMINUM ROD MARKED: RLS 2485 1997
795 SET 3 1/4" ALUMINUM CAP ON 3/4" X 36" ALUMINUM ROD MARKED: RLS 2485 1997
796 SET 3 1/4" ALUMINUM CAP ON 3/4" X 36" ALUMINUM ROD MARKED: RLS 2485 1997
797 SET 3 1/4" ALUMINUM CAP ON 3/4" X 36" ALUMINUM ROD MARKED: RLS 2485 1997
798 SET 3 1/4" ALUMINUM CAP ON 3/4" X 36" ALUMINUM ROD MARKED: RLS 2485 1997
799 SET 3 1/4" ALUMINUM CAP ON 3/4" X 36" ALUMINUM ROD MARKED: RLS 2485 1997
800 SET 3 1/4" ALUMINUM CAP ON 3/4" X 36" ALUMINUM ROD MARKED: RLS 2485 1997



SURVEY NARRATIVE

THIS SURVEY WAS CONDUCTED UNDER CONTRACT WITH SCOTT TIMBER CO., A SUBSIDIARY OF ROSEBURG FOREST PRODUCTS. THE PURPOSE OF THE SURVEY WAS TO SUBDIVIDE SECTION 8 AND TO ESTABLISH INTERIOR CORNERS BASED ON THE SOUTH 1/4 OF SECTION 8 THAT HAD NEVER BEEN PREVIOUSLY ESTABLISHED. THE MINIMUM REQUIREMENT FOR CLOSURE ON THIS PROJECTS WAS 1 FOOT IN 10,000. WE HAD MANY LOOPS ON THIS PROJECT RANGING FROM 1 FOOT IN 13,000 TO 1 FOOT IN 74,000. OUR BASIS OF BEARING WAS THE SOUTH BOUNDARY OF SECTION 8 BETWEEN THE N 1/4 OF SECTION 17 AND THE CLOSING CORNER AT THE SOUTHWEST CORNER OF SECTION 8. THE NORTHWEST CORNER OF SECTION 8 WAS SURVEYED BY THE OREGON STATE DEPARTMENT OF FORESTRY BY ARNOLD G. GIBSON, M51-28. WE RAN POINT TO POINT FROM THE N 1/4 OF SECTION 17 WEST TO THE W 1/2 OF SECTION 17 AND TO THE SECTION CORNERS TO THE WEST. GIBSON'S RECORD MATCHED OUR FIELD WORK 1 FOOT IN 13,000. THIS WAS ADJUSTED OUR WORK TO HIS TO PRESERVE THE RECORD. THE CORNERS THAT CONTROLLED THIS SURVEY ARE SHOWN AS FOUND.

WE FOUND A BUREAU OF LAND MANAGEMENT MONUMENT AT THE NORTHWEST CORNER OF SECTION 8 AND AS A RESULT LOCATED AN "UNOFFICIAL" UNTIL APPROVED SURVEY. AT THE COOS BAY DISTRICT OFFICE WHICH CONFIRMED OUR MEASUREMENTS ON THE NORTH BOUNDARY OF SECTION 8 WITHIN 0.25 FEET. THE NORTHWEST CORNER, THE NORTHEAST CORNER, THE SOUTHWEST CORNER, AND THE WEST 1/4 CORNER OF SECTION 8 ARE ORIGINAL CORNERS WITH A CLEAR HISTORY. THE SOUTHWEST CORNER OF SECTION 8 AND THE NORTHWEST CORNER OF SECTION 17 WERE ALSO STATED TO BE ORIGINAL. HOWEVER, THERE APPEARS TO BE A DISCREPANCY IN 1941 IN THE SIZE OF THE BEARING TREES REPORTED TO BE ORIGINAL SOME 67 YEARS LATER AND AGAIN IN 1957. 83 YEARS AFTER THE ORIGINAL BEARING TREES WERE TAKEN, GIBSON IN 1973 FOUND NEWHOUSE BUT DID NOT UPGRADE WHEN I WAS THERE AT RECORD BEARING AND DISTANCE. GIBSON'S RECORD PROVEN TO BE ENTIRELY RELIABLE. I FOUND NO TRACE OF THE NEWHOUSE CLOSING CORNER FOR SECTIONS 7 AND 8. THIS FELL IN A PRECARIOUS SPOT. A SAND STONE DRAW WITH CONTINUOUS EROSION AND A VERY THIN LAYER OF MUD. I SCOURED OUT A LARGE SECTION OF THE DRAW BUT COULD NOT FIND ANY TRACE OF THE "X" OR NAIL OR BEARING TREES FOUND OR ESTABLISHED BY NEWHOUSE. I MEASURED UP THE DRAW AND FOUND THE 1 INCH IRON PIPE ESTABLISHED BY NEWHOUSE FOR SECTIONS 17 AND 18 BUT NO BEARING TREES. I SET THE WITNESS CORNER ON THE RIDGE TO THE EAST IN A 60 INCH DOUGLAS STUMP AS THIS WAS THE ONLY STABLE LOCATION.

MONUMENT 703 WAS SET BY RECORD ANGLE AT MONUMENT 702 AND RECORD DISTANCE TO MONUMENT 703 (APPROXIMATE NW1/6 PLAT RMI-31 BEARS S 39°30'28" E 512.49' FROM MON 703). MON 719 WAS SET BY DISTANCE-DISTANCE INTERSECTION FROM RECORD CEDAR BEARING TREE SNAG AT ANGLE POINT 49 PLAT RMI-31 AND RECORD W1/6 PLAT RMI-31 (SEE NOTES MON 720). MON 717 WAS SET BY RECORD ANGLE AT MON 716 AND RECORD DISTANCE TO MON 717 WHICH FELL IN D. FIR STUMP PER ANGLE POINT 51 PLAT RMI-31. MON 718 WAS SET BY DISTANCE-DISTANCE INTERSECTION FROM MON 717 AND RECORD BEARING TREE AT ANGLE POINT 50 PLAT RMI-31.

FILED Date: 6-3-97 By: JP This survey consists of: Map: M124-51 Narrative: Corner Rpt:

DOUGLAS COUNTY SURVEYOR

LEGEND MONUMENT FOUND AS NOTED SET 6 FOOT STEEL POST NEAR MONUMENT MONUMENT SET AS NOTED SET 6 FOOT STEEL POST NEAR MONUMENT CALCULATED POSITION ONLY MONUMENT NOT SET RECORD SURVEYS

HEAVY LINE INDICATES LINES BLAZED AND PAINTED WITH YELLOW TREE MARKING PAINT, RED FLAGGING, AND 6 FOOT STEEL POST NOT TO EXCEED 200 FEET BETWEEN EACH POST WITH TOP 1 FOOT OF POST PAINTED YELLOW AND TIED WITH RED FLAGGING

MEAS. - MEASURED VALUE PROP. - PROPORTIONED VALUE GLO. - GOVERNMENT LAND OFFICE FT. - FEET D. FIR - DOUGLAS FIR BLN - BUREAU OF LAND MANAGEMENT MON - MONUMENT

SCALE 1" = 400 FEET DATE OF SURVEY JANUARY THRU APRIL 1997

GARY T. SMITHER OREGON SURVEYOR P.O. BOX 545, NORTH BEND, OREGON 97459 700 S. BROADWAY #19, COOS BAY, OREGON 97420 FAX & PHONE: (503) 267-6026

LOT 3 MEAS. 42.34 ACRES (GLO 42.23 ACRES)

LOT 4 MEAS. 58.96 ACRES (GLO 58.96 ACRES)

LOT 5 MEAS. 51.06 ACRES (GLO 51.23 ACRES)

LOT 6 MEAS. 50.82 ACRES (GLO 50.87 ACRES)

LOT 7 MEAS. 50.58 ACRES (GLO 50.90 ACRES)

LOT 8 MEAS. 8'05"56" W 1698.18'

LOT 9 MEAS. 8'26"48" W 1646.61' (GLO 8'26"48" W 1646.61')

LOT 10 MEAS. 8'26"48" W 1646.61' (GLO 8'26"48" W 1646.61')

LOT 11 MEAS. 8'26"48" W 1646.61' (GLO 8'26"48" W 1646.61')

LOT 12 MEAS. 8'26"48" W 1646.61' (GLO 8'26"48" W 1646.61')

LOT 13 MEAS. 8'26"48" W 1646.61' (GLO 8'26"48" W 1646.61')

LOT 14 MEAS. 8'26"48" W 1646.61' (GLO 8'26"48" W 1646.61')

LOT 15 MEAS. 8'26"48" W 1646.61' (GLO 8'26"48" W 1646.61')