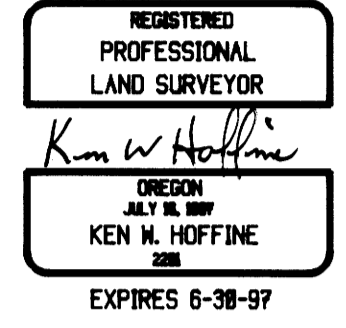


# LONE ROCK TIMBER CO.

PO BOX 1127 ROSEBURG OREGON 97470 DATE: MARCH 1997  
SECTION 30, TOWNSHIP 22 SOUTH, RANGE 04 WEST, W.M. DOUGLAS COUNTY, OREGON  
LONE ROCK TIMBER TRACT: LOVEGREN #3 SCALE 1" = 600'

FILED  
Date: 4-21-1997 By: J.P.  
This survey consists of:  
Map: M 124-47  
Narrative:  
Corner Rpt:  
DOUGLAS COUNTY SURVEYOR



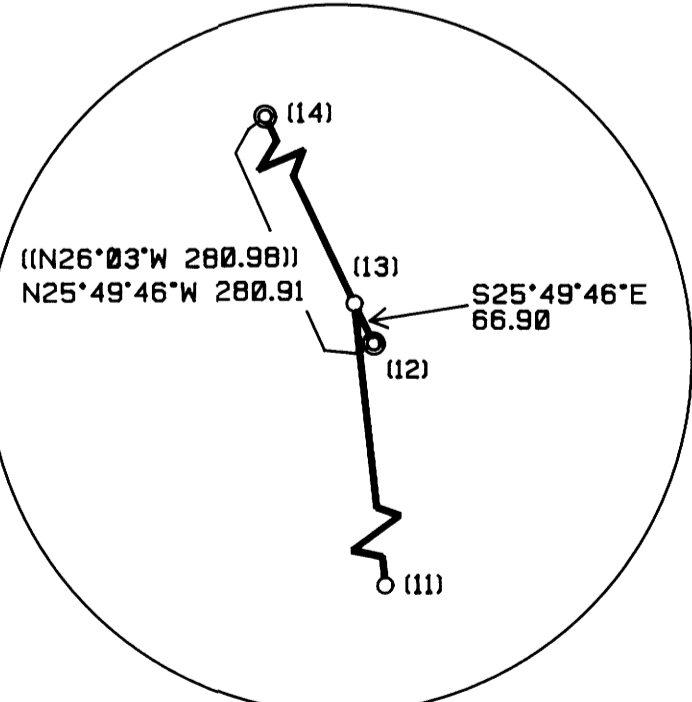
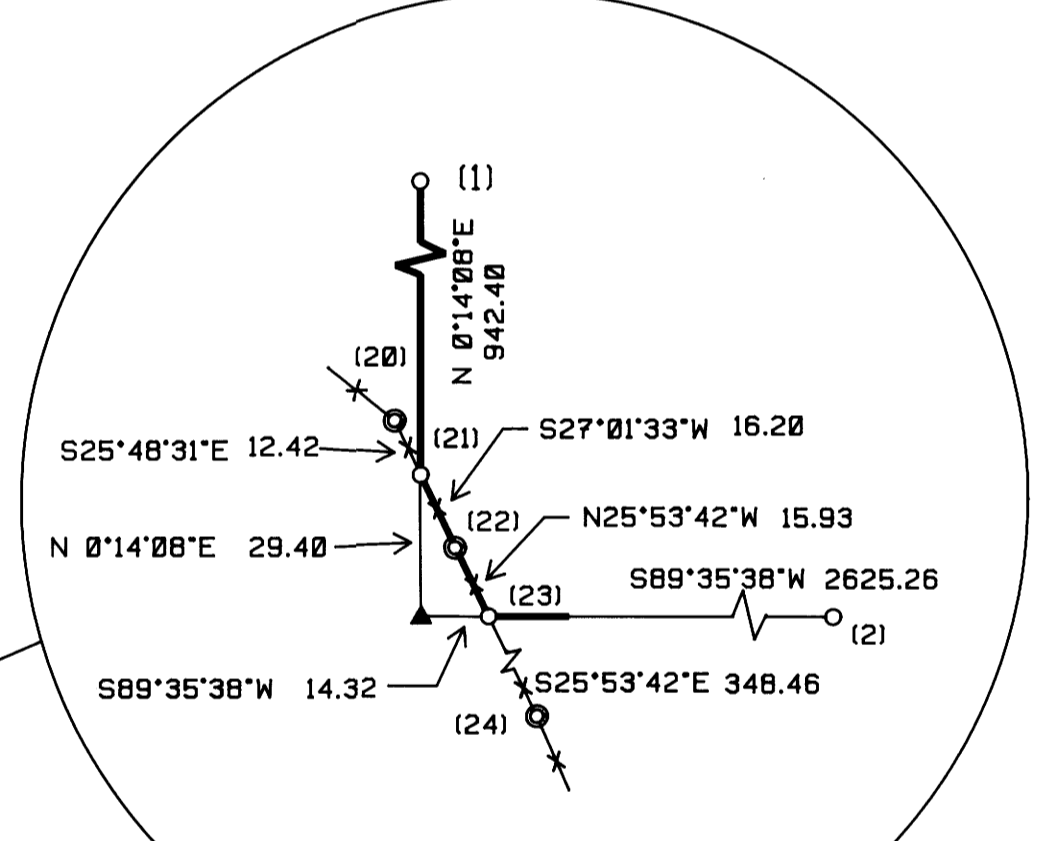
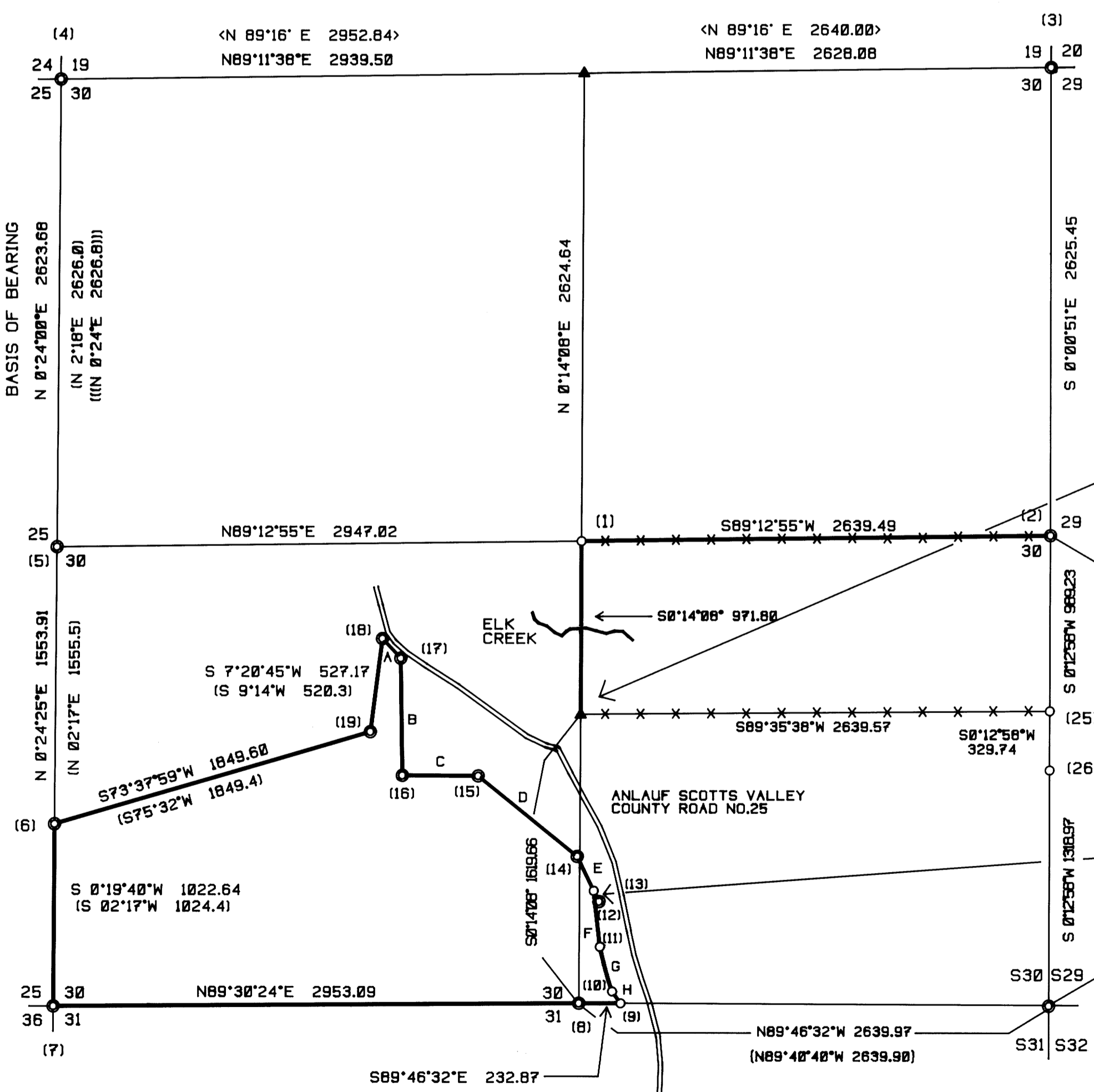
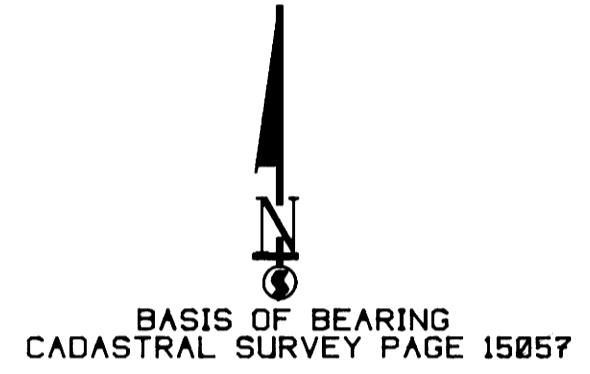
### NARRATIVE

THIS SURVEY WAS CONDUCTED TO ESTABLISH PROPERTY LINES AND CORNERS FOR TIMBER CUTTING PURPOSES. WE INITIATED THIS SURVEY AT IRON ROD PROPERTY CORNER (17) SET BY SHANER AND (18) SET BY WILFORD HAINES RUNNING A RANDOM TRAVERSE SOUTHWESTERLY TO HAINES IRON ROD ON THE WEST SECTION LINE. WE THEN SURVEYED SOUTHERLY TO THE SOUTHWEST CORNER OF SECTION 30 AND THEN EASTERLY TO THE SOUTH 1/4 OF SECTION 30. BOTH CORNERS ARE BLM BCIP SET FROM ORIGINAL EVIDENCE. WE THEN TRAVERSE NORTHERLY TO CORNER (12) AN IRON ROD HIGHWAY R/W MONUMENT AND IRON ROD PROPERTY CORNERS (14), (15) AND (16) SET BY BRUCE SHANER TO THEN CLOSE OUR TRAVERSE. WE SET IRON RODS ON THE WEST R/W BOUNDARY OF THE ANLAUF SCOTTS VALLEY COUNTY ROAD BASED ON DEED DISTANCES (BOOK 463 PAGE 259) WITH STATE PLANE BEARINGS WE ROTATED -1'51" TO GEOGRAPHIC BEARINGS. WE THEN BEGAN FROM POINTS (17) AND (18) TO RUN RANDOM CLOSED TRAVERSES TO THE W1/4, E1/4, AND THE NESC OF SECTION 30 WHICH ARE COUNTY BCIPS AND THE NESC WHICH IS A BLM BCIP ALL SET FROM ORIGINAL EVIDENCE. WE ALSO MADE A CLOSED TRAVERSE TO THE SOUTHEAST CORNER OF SECTION 30 WHICH IS A BCIP SET BY DANIEL BAKER BY DOUBLE PROPORTION. BASED ON OUR CALCULATION FOR THE SUBDIVISION OF SECTION 30 WE SET THE CENTER 1/4 OF SECTION 30 AND THE SOUTH 1/16 BETWEEN SECTIONS 29 AND 30. WE ALSO SET THE SOUTHEAST AND SOUTHWEST CORNERS OF OUR PROPERTY BASED ON THE DEED DESCRIPTION WHICH IS THE NORTH 3/4 OF THE N1/2 OF THE SE1/4 OF SECTION 30. THE SOUTHWEST CORNER OF THIS TRACT INTERSECTS THE WEST R/W BOUNDARY OF INTERSTATE 5 WHICH WE SET CORNERS AS SHOWN HEREON. THIS SURVEY WAS DONE WITH A NIKON DTM 430 WITH GARY ANGIOLET, PAT KELLY AND GERALD RAGON ASSISTING ME.

### LEGEND:

- ⊙ - FOUND MONUMENT
- - SET 5/8" BY 36" IRON ROD WITH 2" ALUMINUM CAP
- ▲ - COMPUTED NOT SET
- - PROJECTED LINES
- - PROPERTY LINES FLAGGED, BLAZED, AND PAINTED
- | | - WILFORD HAINES SURVEY FILED IN DOUGLAS COUNTY SURVEYORS OFFICE M 26 - 21
- || || - BRUCE SHANER SURVEY FILED IN DOUGLAS COUNTY SURVEYORS OFFICE M 37 - 26
- || || - BLM SURVEY FIELD NOTE IN DOUGLAS COUNTY SURVEYORS OFFICE PAGES 15056 - 15058
- || || - DANIEL BAKER SURVEY FILED IN DOUGLAS COUNTY SURVEYORS OFFICE M 119 - 73
- < > - GLO SURVEY FIELD NOTE IN DOUGLAS COUNTY SURVEYORS OFFICE PAGES 1347

LINE	BEARING	DISTANCE
A	N 43°05'24" W	150.72
B	N 0°51'27" W (IN 01°05' W)	655.57 655.71(1)
C	N 89°47'07" W (IN 90° 00" W)	425.52 425.90(1)
D	N 50°59'41" W (IN 51° 16" W)	715.55 715.48(1)
E	N 25°49'46" W	214.00
F	N 06°17'30" W	315.98
G	N 15°10'46" W	261.22
H	N 35°43'11" W	81.00



### CORNER INFORMATION

- THE FOLLOWING IS A RECORD OF ALL CORNERS FOUND OR SET DURING THE COURSE OF THIS SURVEY.
- (1) CENTER 1/4 OF SECTION 30  
SET 5/8" X 40" IRON ROD WITH 2 1/2" ALUMINUM CAP MARKED LONE ROCK TIMBER T22S R4W C 1/4 S 30 1996 PLS 2291.  
-- 1" DOUGLAS FIR BEARS N89 1/4"E, 43.9 FEET, WE SCRIBE C 1/4 S30 B.T. AND TAG TREE  
-- 22" DOUGLAS FIR BEARS N65 1/2"W, 89.8 FEET, WE SCRIBE C 1/4 S30 B.T. AND TAG TREE  
-- 10" DOUGLAS FIR BEARS S53"W, 26.5 FEET, WE SCRIBE C 1/4 S30 B.T. AND TAG TREE  
-- 6" DOUGLAS FIR BEARS N50"E, 25.5 FEET, WE SCRIBE 1/4 S30 B.T. AND TAG TREE  
CORNER LIES ON SOUTH FACING SLOPE APPROXIMATELY 546 3/4"W, 14.5 FEET FROM FENCE JUNCTION THAT RUNS NORTH-SOUTH AND EAST.
  - (2) 1/4 CORNER BETWEEN SECTION 29 AND 30  
FOUND COUNTY BRASS CAP .08 FEET ABOVE GROUND.  
-- 10" OAK BEARS N62 3/4"W, 34.5 FEET (RECORD N62" 35.0 FEET) WELL HEALED FACE WITH B.T. TAG  
-- 22" BLACK OAK BEARS N45"W, 76.1 FEET (RECORD N45"W, 77.88 FEET) WELL HEALED FACE  
-- 27" DOUGLAS FIR BEARS N50"E, 68.1 FEET (RECORD N50" 68.1 FEET) WELL HEALED FACE WITH B.T. TAG  
CORNER LIES IN A GRASSY MEADOW BOWL, THE RIDGE TO THE EAST IS APPROXIMATELY 100 FEET AND THE RIDGE TO THE NORTH IS APPROXIMATELY 100 FEET.
  - (3) SECTION CORNER BETWEEN SECTIONS 19, 20, 29 AND 30  
FOUND 2 1/2" BLM BRASS CAP.  
-- 8" OAK BEARS N20"W, 1.65 FEET  
-- 8" OAK BEARS N69 1/4"W, 4.8 FEET (RECORD N75"W, 4.3 FEET) WELL HEALED SCAR, WE TAGGED  
-- 8" DOUGLAS FIR STUMP BEARS N23"E, 36.2 FEET, VISIBLE SCRIBING  
-- 14" DOUGLAS FIR 4 FEET TALL STUMP HEAVILY DECAYED BEARS N20 1/4"W, 26.3 FEET, VISIBLE SCRIBING  
-- 44" ORIGINAL DOUGLAS FIR STUMP BEARS S64"E, 61.7 FEET OLD BARK SCRIBING VISIBLE  
-- 12" ORIGINAL DOUGLAS FIR SNAG IS DOWN AND HEAVILY DECAYED, WE MEASURED 540"W, 57.8 FEET TO THE ROOT HOLE  
CORNER LIES ON A STEEP SOUTHEAST SLOPE APPROXIMATELY 220 FEET NORTH OF CDX CREEK COUNTY ROAD
  - (4) SECTION CORNER OF SECTION 19, 24, 25 AND 30  
FOUND COUNTY BRASS CAP 1.3 FEET ABOVE GROUND.  
-- 24" DOUGLAS FIR BEARS S31 1/2"E, 36.8 FEET WELL HEALED FACE WITH BLM TAG  
-- 40" ROTTEN DOUGLAS FIR STUMP BEARS N49 3/4"W, 21.1 FEET, HAS A CHOPPED OFF FACE  
-- 15" DOUGLAS FIR BEARS S31 1/2"E, 26.7 FEET WELL HEALED FACE WITH A B.T. TAG  
-- 15" DOUGLAS FIR BEARS S4 1/2"W, 40.8 FEET WELL HEALED FACE WITH B.T. TAG  
CORNER LIES ON A 45X EASTERLY SLOPE APPROXIMATELY 300 FEET WEST OF COUNTY ROAD.
  - (5) 1/4 CORNER BETWEEN SECTION 25 AND 30  
FOUND COUNTY BRASS CAP 1.8 FEET ABOVE GROUND.  
-- 24" DOUGLAS FIR BEARS S31 1/2"E, 36.8 FEET WELL HEALED FACE WITH BLM TAG  
-- 40" ROTTEN DOUGLAS FIR STUMP BEARS N49 3/4"W, 15.8 FEET CHOPPED OFF FACE, THERE IS NO B.T. TAG  
-- 22" DOUGLAS FIR BEARS N43 3/4"W, 59.9 FEET WELL HEALED FACE WITH B.T. TAG  
CORNER LIES APPROXIMATELY 100 FEET EAST OF RIDGE ON A 65X EASTERLY SLOPE.
  - (6) PROPERTY CORNER  
FOUND HAINES T-IRON 1.0 FEET ABOVE GROUND.  
-- 24" CEDAR BEARS S15"E, 48.7 FEET (RECORD S14"E, 48.9 FEET) WELL HEALED FACE  
-- 30" DOUGLAS FIR BEARS N76"W, 15.7 FEET (RECORD N75"W, 16.8 FEET) WELL HEALED FACE AND TAG  
CORNER LIES ON A WESTERLY 35X SLOPING SPUR RIDGE.
  - (7) SECTION CORNER OF 25, 30, 31 AND 36  
FOUND DOUGLAS COUNTY BRASS CAP 1.8 FEET ABOVE GROUND.  
-- 13" DOUGLAS FIR BEARS N49 1/2"E, 28.9 FEET (RECORD N41"W, 37.3 FEET) WELL HEALED FACE AND TAG  
-- 25" DOUGLAS FIR BEARS S77 3/4"W, 39.0 FEET (RECORD S78"W, 39.3 FEET) WELL HEALED FACE AND TAG  
-- 52" DOUGLAS FIR ROTTEN STUMP S14 1/2"W, 29.9 FEET (RECORD S16"W, 30.36 FEET) CHOPPED OFF FACE  
SCRIBING VISIBLE  
-- 32" CEDAR BEARS S14"E, 81.4 FEET (RECORD S13 1/2"E, 91.7 FEET) WELL HEALED FACE AND TAG  
-- 67" DOUGLAS FIR BEARS N4 3/4"E, 132.8 FEET (RECORD N15"E, 130.82 FEET) WELL HEALED FACE AND TAG  
CORNER LIES 1.0 FEET NORTHWEST FROM A EAST RUNNING FENCE INTERSECTING A NORTH SOUTH FENCE LINE.
  - (8) 1/4 CORNER OF SECTION 30 AND 31  
FOUND DOUGLAS COUNTY BRASS CAP IN GOOD CONDITION.  
-- 24" GRAND FIR STUMP BEARS S63 1/4"W, 18.1 FEET (RECORD S62"W, 18.2 FEET) WELL HEALED FACE AND TAG  
-- 40" ROTTEN DOUGLAS FIR STUMP BEARS S67 1/4"E, 18.0 FEET (RECORD S68" 17.8 FEET) HAS A COUNTY B.T. TAG  
-- 36" DOUGLAS FIR STUMP BEARS N79 3/4"E, 50.4 FEET (RECORD N77"E, 50.7 FEET) CHOPPED OFF FACE AND TAG  
-- 15" DOUGLAS FIR BEARS N79 3/4"E, 50.4 FEET (RECORD N77"E, 50.7 FEET) CHOPPED OFF FACE AND TAG  
CORNER LIES 1.0 FEET NORTH OF EAST WEST RUNNING FENCE LINE.
  - (9) RIGHT OF WAY BOUNDARY LINE CORNER  
SET A 5/8" X 36" REBAR WITH PLASTIC YELLOW CAP MARKED LONE ROCK TIMBER LS 2291.  
-- 14" DOUGLAS FIR BEARS N88 1/2"E, 25.1 FEET WE SCRIBED "B.T." AND TAGGED  
CORNER IS LOCATED 1.5 FEET NORTH OF EAST WEST FENCE ON A 68X EASTERLY SLOPE.
  - (10) RIGHT OF WAY BOUNDARY LINE CORNER  
SET A 5/8" X 36" REBAR WITH PLASTIC YELLOW CAP MARKED LONE ROCK TIMBER LS 2291.  
-- 12" DOUGLAS FIR BEARS N81 1/4"E, 32.5 FEET WE SCRIBED "B.T." AND TAGGED  
CORNER LIES ON A STEEP EAST FACING SLOPE.
  - (11) RIGHT OF WAY BOUNDARY LINE CORNER  
SET A 5/8" X 36" REBAR WITH YELLOW PLASTIC CAP MARKED LONE ROCK TIMBER LS 2291.  
-- 17" DOUGLAS FIR BEARS S52 3/4"E, 34.3 FEET WE SCRIBED "B.T." AND PLACED "P.K." NAIL IN FACE AND TAG TREE  
CORNER LIES ON STEEP EASTERLY SIDE SLOPE.
  - (12) RIGHT OF WAY BOUNDARY LINE CORNER  
FOUND A 5/8" REBAR 0.3 FEET ABOVE GROUND.  
-- HIGHWAY METAL POST AND SIGN READS SHRW 649+50 250 BEARS N25"W, 1.6 FEET  
CORNER LIES ON A 45X NORTHEAST SLOPED HILL LOCATED AT A FENCE CORNER OF A FENCE RUNNING N25"W AND S60"E.
  - (13) RIGHT OF WAY BOUNDARY LINE CORNER  
SET A 5/8" X 36" REBAR WITH YELLOW PLASTIC CAP MARKED LONE ROCK TIMBER LS 2291.  
-- 15" DOUGLAS FIR BEARS S 7 1/2"W, 13.8 FEET WE SCRIBED "B.T." AND TAG TREE  
CORNER LIES IN A FENCE BEARING N26"W.
  - (14) PROPERTY CORNER  
FOUND A 5/8" REBAR 0.2 FEET ABOVE GROUND.  
-- 17" DOUGLAS FIR BEARS N43"W, 17.2 FEET WE SCRIBED "B.T." AND TAGGED  
CORNER LIES IN FENCE LINE RUNNING N26"W AND S26"E.
  - (15) PROPERTY CORNER  
FOUND A 5/8" REBAR 0.2 FEET ABOVE GROUND.  
-- 10" MAPLE BEARS N81"E, 8.0 FEET, WE SCRIBED "B.T." AND TAGGED  
CORNER LIES 3.4 FEET WEST OF OLD TELEPHONE FENCE POST WITH METAL FENCE POST ALONG SIDE.
  - (16) PROPERTY CORNER  
FOUND A 5/8" REBAR 0.2 FEET ABOVE GROUND.  
-- 18" DOUGLAS FIR STUMP BEARS N51"E, 5.7 FEET, WIRE WRAPPED AROUND STUMP  
CORNER LIES ON TOP OF NOB APPROXIMATELY 75 FEET NORTH OF CENTERLINE OF A DIRT ROAD.
  - (17) PROPERTY CORNER  
FOUND A 5/8" REBAR 0.3 FEET ABOVE GROUND.  
CORNER LIES 6 FEET SOUTH OF ROAD DITCH AND 2 FEET N45"E OF A FENCE INTERSECTION.
  - (18) PROPERTY CORNER  
FOUND HAINES T-BAR 0.5 FEET ABOVE GROUND, WE STRAIGHTENED T-BAR TO AN UPRIGHT POSITION.  
CORNER LIES 8.9 FEET FROM A FENCE CORNER OF A NORTH AND WEST RUNNING FENCE. CORNER IS 33.5 FEET FROM CENTERLINE OF COUNTY ROAD.
  - (19) PROPERTY CORNER  
FOUND HAINES T-IRON 0.8 FEET ABOVE GROUND.  
-- 13" DOUGLAS FIR 5 FOOT TALL STUMP BEARS N71"E, 2.5 FEET (RECORD N70"E, 2.4 FEET) WELL HEALED FACE AND TAG  
CORNER LIES ON A 35X NORTH SLOPE.
  - (20) PROPERTY CORNER I-5 RIGHT-OF-WAY  
FOUND 5/8" IRON ROD IN FENCE LINE
  - (21) PROPERTY CORNER  
SET 5/8" X 40" IRON ROD WITH PLASTIC CAP MARKED LONE ROCK TIMBER PLS 2291 ON I-5 RIGHT-OF-WAY.  
-- 18" GRAND FIR BEARS S43 1/2"E, 26.8 FEET, WE SCRIBE B.T. AND TAG (THIS TREE IS ALSO USED FOR (23) BT)
  - (22) PROPERTY CORNER I-5 RIGHT-OF-WAY  
FOUND 5/8" IRON ROD IN FENCE LINE
  - (23) PROPERTY CORNER  
SET 5/8" X 40" IRON ROD WITH PLASTIC CAP MARKED LONE ROCK TIMBER PLS 2291 ON I-5 RIGHT-OF-WAY.  
-- 18" GRAND FIR BEARS N23 1/2"E, 10.0 FEET, WE SCRIBE B.T. AND TAG (THIS TREE IS ALSO USED FOR (21) BT)
  - (24) PROPERTY CORNER I-5 RIGHT-OF-WAY  
FOUND 5/8" IRON ROD IN FENCE LINE.
  - (25) PROPERTY CORNER  
SET 5/8" X 40" IRON ROD MARKED LONE ROCK TIMBER PLS 2291.  
-- 11" DOUGLAS FIR BEARS S11"W, 21.4 FEET, WE SCRIBE B.T. AND TAG
  - (26) SOUTH 1/16 CORNER (BETWEEN SECTIONS 29 AND 30)  
SET 5/8" X 40" IRON ROD WITH 2 1/2" ALUMINUM CAP MARKED LONE ROCK TIMBER S 1/16 S29 S30 1996 PLS 2291.  
-- 4" DOUGLAS FIR BEARS N89 1/4"W, 30.3 FEET, WE SCRIBE S 1/16 S30 B.T. AND TAG TREE  
-- 11" DOUGLAS FIR BEARS S89"E, 7.2 FEET, WE SCRIBE S 1/16 S29 B.T. AND TAG TREE  
CORNER LIES ON SOUTH SLOPE NEAR TOE OF HILL, APPROXIMATELY 40 FEET NORTH OF SHALLOW DRAIN.
  - (27) SOUTHEAST SECTION CORNER OF SECTION 30  
FOUND BCIP AT GROUND LEVEL.  
-- 10" OAK BEARS S31 1/4"E, 327.8 FEET (RECORD S30"E, 326.2 FEET) SCRIBING VISIBLE WITH "M" NAIL IN FACE AND B.T. TAG  
-- 9" ASH BEARS S22 1/2"W, 272.6 FEET (RECORD S22"W, 272.1 FEET) SCRIBING VISIBLE WITH "M" NAIL IN FACE AND B.T. TAG  
-- 12" ASH BEARS S55"E, 462.6 FEET (RECORD S56"E, 462.2 FEET) SCRIBING VISIBLE WITH "M" NAIL IN FACE AND B.T. TAG  
-- 12" ASH BEARS N79 1/4"W, 513.4 FEET (RECORD N82"W, 512.0 FEET) SCRIBING VISIBLE WITH "M" NAIL IN FACE AND B.T. TAG  
THIS CORNER LIES IN MIDDLE OF GRASS FIELD NORTH OF ELK CREEK.