

RECORD OF SURVEY

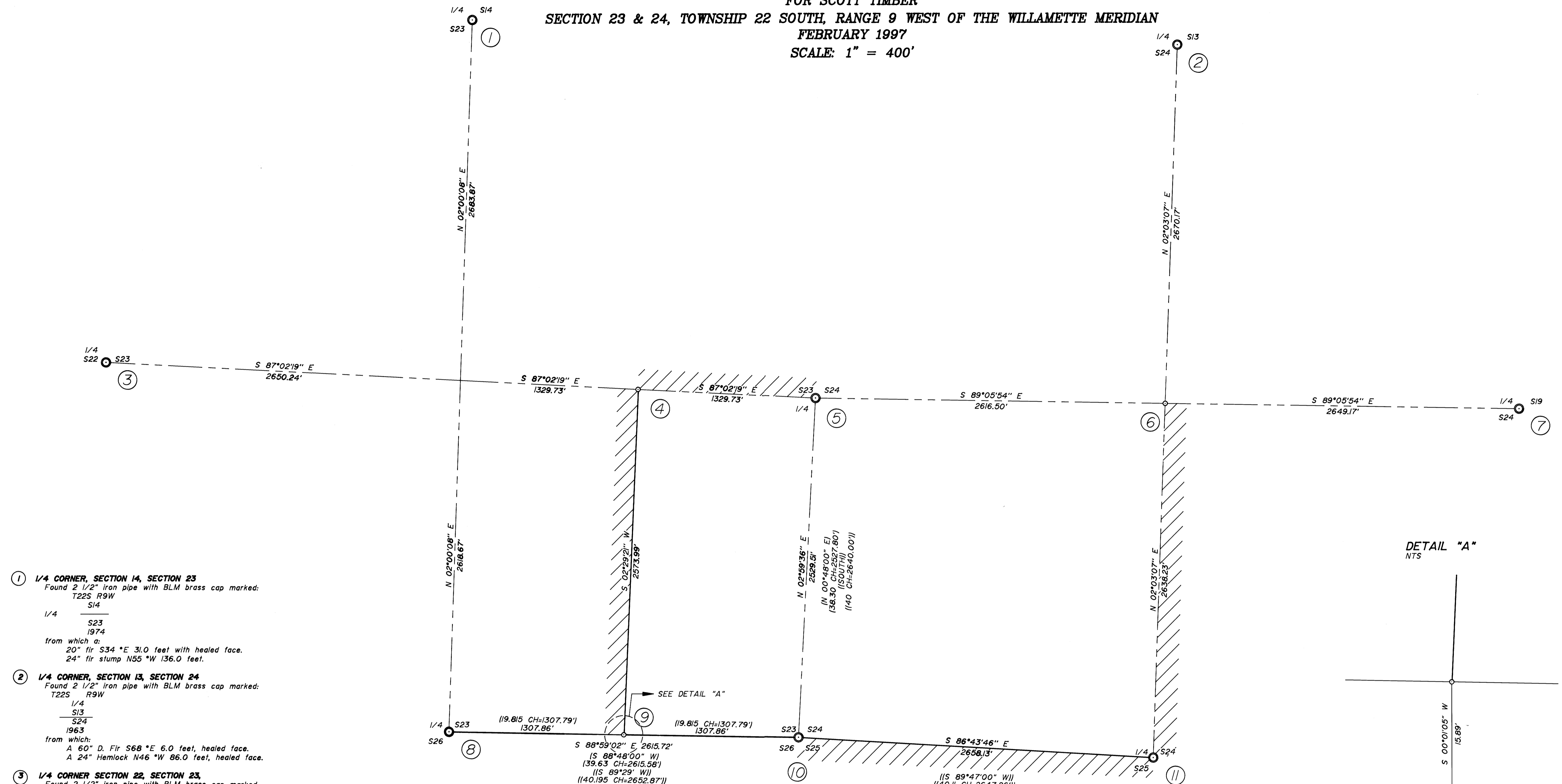
FOR SCOTT TIMBER

SECTION 23 & 24, TOWNSHIP 22 SOUTH, RANGE 9 WEST OF THE WILLAMETTE MERIDIAN

FEBRUARY 1997

SCALE: 1" = 400'

FILED
 Date: 3-5-97 By: JC
 This survey consists of:
 Map: M 124-42
 Narrative:
 Corner Rpt:
 DOUGLAS COUNTY SURVEYOR



- ① 1/4 CORNER, SECTION 14, SECTION 23
 Found 2 1/2" iron pipe with BLM brass cap marked:
 T22S R9W
 S14
 1/4
 S23
 1974
 from which a:
 20" fir S34 *E 31.0 feet with healed face.
 24" fir stump N55 *W 136.0 feet.
- ② 1/4 CORNER, SECTION 13, SECTION 24
 Found 2 1/2" iron pipe with BLM brass cap marked:
 T22S R9W
 S13
 S24
 1963
 from which:
 A 60" D. Fir S68 *E 6.0 feet, healed face.
 A 24" Hemlock N46 *W 86.0 feet, healed face.
- ③ 1/4 CORNER SECTION 22, SECTION 23
 Found 2 1/2" iron pipe with BLM brass cap marked:
 T22S R9W
 S22 | S23
 1983
 from which:
 A 28" hemlock S32 *E 37.7 feet, healed face.
 A 30" hemlock stump N11 *W 70.2 feet, healed face.
- ④ CE 1/16 CORNER, SECTION 23
 Set 5/8" aluminum rod with aluminum cap marked as
 indicated in the legend and stamped:
 CE 1/16-S23
 from which:
 A 10" w. fir S44 *E 37.8 feet, scribed "CE 1/16 S23 BT."
 A 14" w. fir N22 *W 42.1 feet, scribed "CE 1/16 S23 BT."
 No trees available in Section 26
- ⑤ 1/4 CORNER SECTION 23, SECTION 24
 Found 2 1/2" iron pipe with BLM brass cap marked:
 T22S R9W
 S23 | S24
 1973
 from which:
 A 15" Alder N74 *E 51.5 feet, healed face.
 A 30" Maple S75 *W 66.0 feet, healed face.
- ⑥ C 1/4 CORNER, SECTION 24
 Set a 5/8" aluminum rod with aluminum cap marked as
 indicated in the legend and stamped:
 T22S R9W
 C 1/4 + S24
 from which:
 A 10" D. fir S60 *W 8.6 feet, scribed "C 1/4 S24 BT."
 A 15" D. fir N20 *E 12.7 feet, scribed "C 1/4 S24 BT."
 A 8" D. fir N45 *W 18.3 feet, scribed "C 1/4 S24 BT."
 A 12" D. fir S77 *E 37.7 feet, scribed "C 1/4 S24 BT."

- ⑦ 1/4 CORNER, SECTION 24, SECTION 19
 Found 2" iron pipe with GLO brass cap marked:
 S24 | S19
 1931
 from which:
 A 28" fir snag S65 *W 11.9 feet, no marks.
 A 50" fir N55 *W 36.3 feet, healed face.
- ⑧ 1/4 CORNER, SECTION 23, SECTION 26
 Found 2 1/2" iron pipe with BLM brass cap marked:
 T22S R9W
 S23
 1/4
 S26
 1974
 from which:
 A 30" fir stump N18 *W 23.1 feet.
 A 16" fir N49 *E 38.9 feet, healed face.
 A 12" fir snag S82 *E 23.1 feet, healed face.
- ⑨ E 1/16 CORNER, SECTION 23, SECTION 26
 Set a 5/8" aluminum rod with aluminum cap marked as
 indicated in the legend and stamped:
 S23
 E 1/16
 S26
 from which:
 A 20" D. fir N3 *W 76.3 feet, scribed "E 1/16 S23 BT."
 A 18" hemlock N52 *W 51.9 feet, scribed "E 1/16 S23 BT."
 No trees available in Section 26.
 A 2 1/2" iron pipe with BLM brass cap marked
 S23
 E 1/16
 S26
 1974
 bears S00 *O1*05"W, 15.89 feet.
- ⑩ SECTION CORNER, SEC. 23, SEC. 24, SEC. 25, SEC. 26
 Found 5/8" iron rod from which:
 A 2 1/2" iron pipe N28 *E 33.0 feet with a BLM brass
 cap marked:
 "RM T22S R9W S24 33 ft. 1974" and an arrow
 pointing to the corner.
 Found 2 1/2" iron pipe N28 *W 33.0 feet with BLM brass cap marked:
 "RM T22S R9W S23 33 ft. 1974" and an arrow
 pointing to the corner.
 Found 1" iron pipe with DCSO brass cap marked:
 County Surveyors Office
 1967
 wit. cor S23 | S24, 25 ft.
 S26 | S25 to cor
 T22S R9W
 from which:
 A 12" alder S62 *E 8.3 feet, healed face.
 A 12" alder N1 *W 7.0 feet, healed face.
 A 18" alder S63 *W 54.7 feet, healed face.
 A 24" D. fir N65 *E 41.7 feet, healed face.
 A 1" iron pipe N44 *W 14.1 feet.
- ⑪ 1/4 CORNER, SECTION 24, SECTION 25
 Found 2 1/2" iron pipe with BLM brass cap marked:
 T22S R9W
 S24
 1/4
 S25
 1979
 from which:
 A 14" fir N29 *W 8.0 feet, healed face.
 A 10" alder S57 1/2 *E 3.3 feet, healed face.

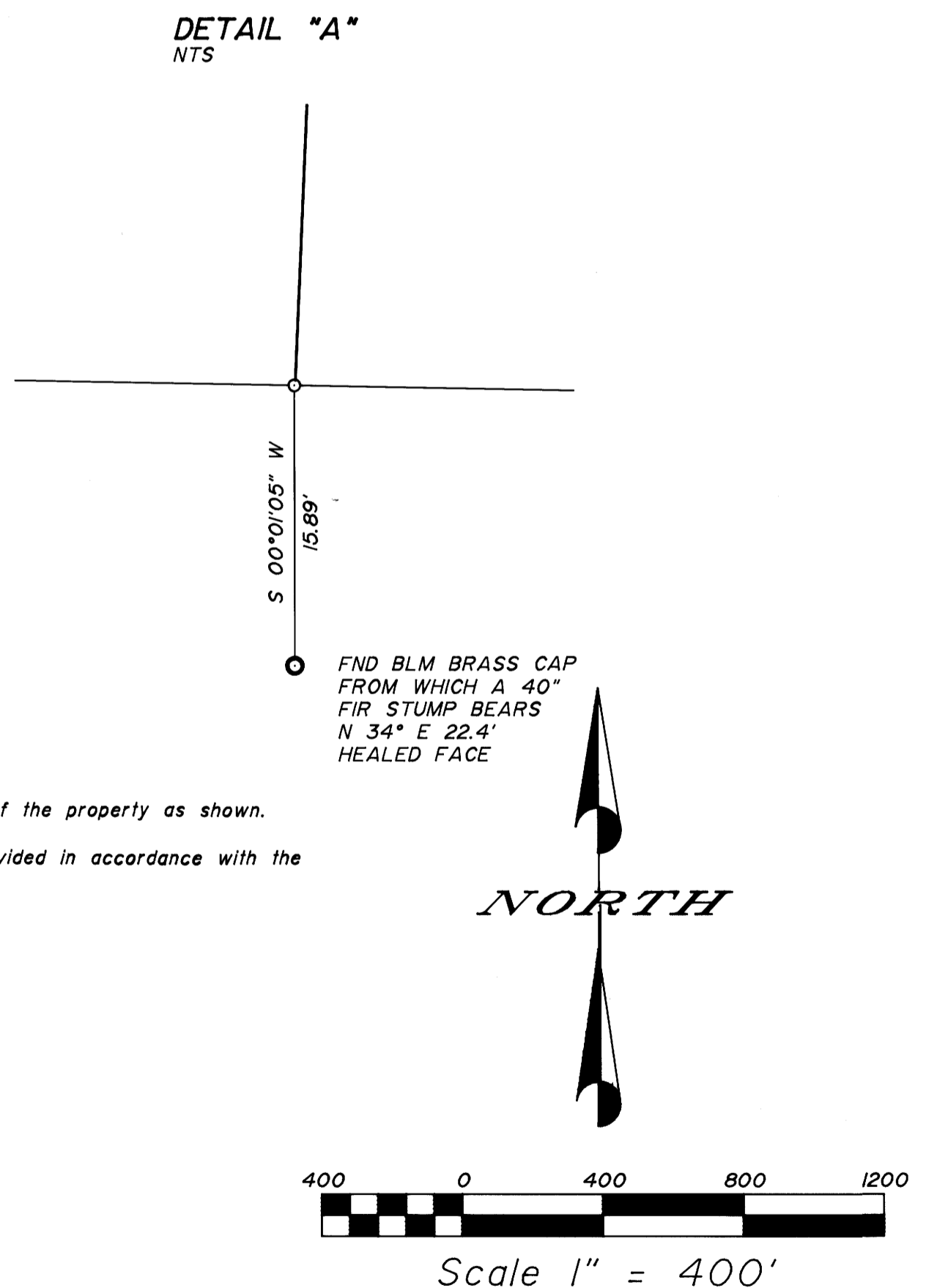
NARRATIVE
 The purpose of this survey was to monument and mark the boundary of the property as shown.
 The monuments shown were used to control and the Section was subdivided in accordance with the B.L.M. Manual of Instruction, 1973.
 The Basis of Bearings is from GPS observation.

LEGEND:

- Found monument as noted.
- ▲ Calculated point
- Set 5/8" aluminum Rod with aluminum cap marked: "IP TIMBERLANDS OPERATING CO." "UNLAWFUL TO DISTURB" RLS 1654
- 1997
- ////// Boundary line posted with metal posts

RECORD INFORMATION:

- () 1980 dependent resurvey by B.L.M.
- (()) G.L.O. 1878



COUNTY SURVEYORS FILE DATA
 DO NOT REMOVE FROM OFFICE

REGISTERED PROFESSIONAL LAND SURVEYOR

RONALD A. QUIMBY
 1954
 EXP. DATE: 12-31-98

AAA

SURVEYING SERVICE, INC.
 ENGINEERING • SURVEYING • PLANNING

3076 NE DIAMOND LAKE BLVD.
 ROSEBURG, OREGON 97470
 TEL (541) 672-2086
 FAX (541) 672-0611