

FILED
Date: 2/28/96 By: DP
This survey consists of:
Map: M124-4
Narrative:
Corner: Rat:
DOUGLAS COUNTY
& SURVEYOR

COUNTY SURVEYORS FILE DATA
DO NOT REMOVE FROM OFFICE

BOUNDARY LINE ADJUSTMENT SURVEY AFFECTING DOUGLAS COUNTY PROPERTY OWNERSHIP

DOUGLAS COUNTY PLANNING DEPARTMENT FILE No. 95-346

NARRATIVE

THIS SURVEY WAS MADE IN JULY, AUGUST, AND OCTOBER OF 1995 BY DANIEL W. BAKER, OF BAKER AND ASSOCIATES, SURVEYORS, 1385 OAK STREET, SUITE 3, EUGENE, OREGON. THE PURPOSE OF THIS SURVEY WAS TO LOCATE AND MARK, IN THE FIELD, THE PROPERTY LINES OF WEYERHAEUSER COMPANY OWNERSHIP IN THE SOUTHWEST 1/4 OF SECTION 34, TOWNSHIP 21 SOUTH, RANGE 4 WEST, WILLAMETTE MERIDIAN. A TOPCON GTS-301 THEODOLITE WAS USED TO PERFORM THIS SURVEY WITH A MINIMUM ERROR OF CLOSURE OF 1:12100 BEFORE COMPASS ADJUSTMENT. THE BASIS OF BEARING FOR THIS SURVEY WAS THE EAST 1/2 OF THE SOUTH LINE OF THE SOUTHWEST 1/4 OF SECTION 34 PER C.S.F. M119-54 AS SURVEYED BY THIS COMPANY AND ALSO DATED 1995.

THE FOLLOWING CORNERS WERE USED FOR CONTROL AS FOUND, AND ACCEPTED AS BEING IN CORRECT POSITIONS: SW SECTION CORNER, WEST 1/16, SOUTH 1/4 CORNER, CENTER 1/4 CORNER, AND THE WEST 1/4 CORNER, ALL OF SECTION 34.

THE SOUTH 1/16 CORNER ON THE WEST LINE OF SECTION 34 WAS SET AT MIDPOINT AND ON LINE BETWEEN THE WEST 1/4 CORNER AND SOUTHWEST CORNER OF SECTION 34. THE CENTER SOUTH 1/16 CORNER WAS CALCULATED AS BEING AT MIDPOINT AND ON LINE BETWEEN THE CENTER 1/4 CORNER AND THE SOUTH 1/4 CORNER. THE C-S-S 1/64 CORNER WAS SET AT MIDPOINT AND ON LINE BETWEEN THE CALCULATED POSITION OF THE CENTER SOUTH 1/16 AND THE SOUTH 1/4 CORNER. THE SOUTHWEST 1/16 CORNER WAS SET AT THE INTERSECTION OF THE EAST/WEST AND NORTH/SOUTH CENTERLINES OF THE SOUTHWEST 1/4. THE C-S-SW 1/64 CORNER WAS SET ON LINE AND AT MIDPOINT BETWEEN THE SOUTHWEST 1/16 AND WEST 1/16 CORNERS. THE TWO PROPERTY CORNERS SET NEAR THE C-S-SW 1/64 CORNER WERE SET ON LINE AT DISTANCES AGREED TO BY BOTH PARTIES.

THE CORNERS SET IN THIS SURVEY WERE MONUMENTED AS NOTED WITH 2-1/2" BRASS CAPS. THE CORNER WAS MARKED WITH PROPER MARKING PER 1973 BLM MANUAL OF INSTRUCTION. THE TRUE PROPERTY LINE WAS MARKED BY BLAZING TREES (BLAZES PAINTED RED) ON EITHER SIDE OF THE TRUE LINE. BEARING TREES ESTABLISHED OR TIED IN THIS SURVEY WERE BASED ON MAGNETIC 20' DECLINATION, WITH DISTANCES TO A "W" NAIL IN THE LOWER BLAZE.

SCALE 1"=400'

1/4 CORNER 33 & 34

FOUND: 2-1/2" BRASS CAP DATED 1988 PER C.S.F. M106-48
16" FIR, N 0-1/2 W, 16.0' TO CENTER - CLOSED FACE
RECORD: N 0-1/2 W, 15.5' TO "W" NAIL - 1988 M106-48
30" CEDAR STUMP, S 22 E, 25.5' - SCRIBING VISIBLE
RECORD: UNKNOWN

CENTER 1/4 CORNER

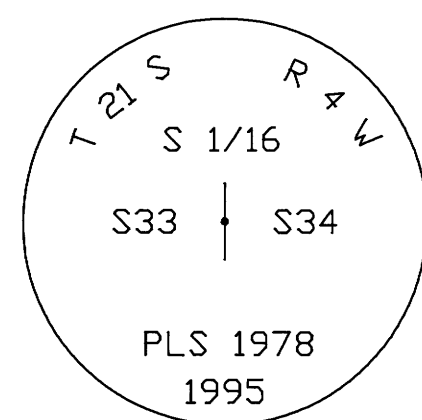
FOUND: 2-1/2" BRASS CAP DATED 1988 PER C.S.F. M106-48
20" FIR, S 65 E, 24.1' - CLOSED FACE
RECORD: S 65 E, 24.1' - 1988 M106-48
17" FIR, S 53 W, 18.7' - CLOSED FACE
RECORD: S 53 W, 18.7' - 1988 M106-48

CW 1/16 CORNER

FOUND: 2-1/2" BRASS CAP DATED 1988 PER C.S.F. M106-48
16" FIR STUMP, N 26 W, 25.4'
RECORD: N 26 W, 25.4' - M106-48
23" HEMLOCK STUMP, S 84 W, 29.2' - SCRIBING VISIBLE
RECORD: S 84 W, 29.2' - M106-48

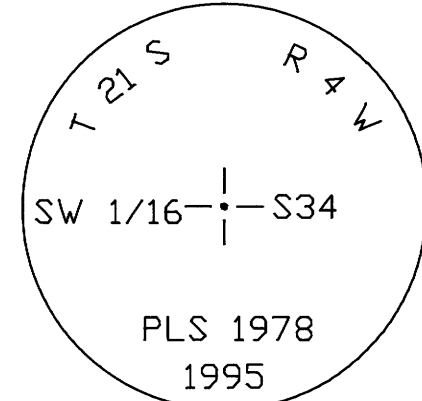
S 1/16 CORNER 33 & 34

SET: 2" X 36" IRON PIPE WITH 2-1/2" BRASS CAP DATED 1995
10" CEDAR, NORTH, 81.6' TO "W" NAIL
SCRIBED "S 1/16 S33 BT"
14" MAPLE, S 77-1/2 E, 20.7' TO "W" NAIL
SCRIBED "S 1/16 S34 BT"
6" METAL FENCE POST 3' SOUTH



SW 1/16 CORNER

SET: 2" X 37" IRON PIPE WITH 2-1/2" BRASS CAP DATED 1995
20" FIR, S 23-1/2 W, 6.0' TO "W" NAIL
SCRIBED "SW 1/16 S34 BT"
21" FIR, S 59 E, 31.4' TO "W" NAIL
SCRIBED "SW 1/16 S34 BT"
6.0" METAL FENCE POST 1' SOUTH
NOTE: 3/4" REBAR - UNKNOWN ORIGIN, BEARS N 27'45"32" W, 11.88'



SECTION CORNER 3, 4, 33, 34

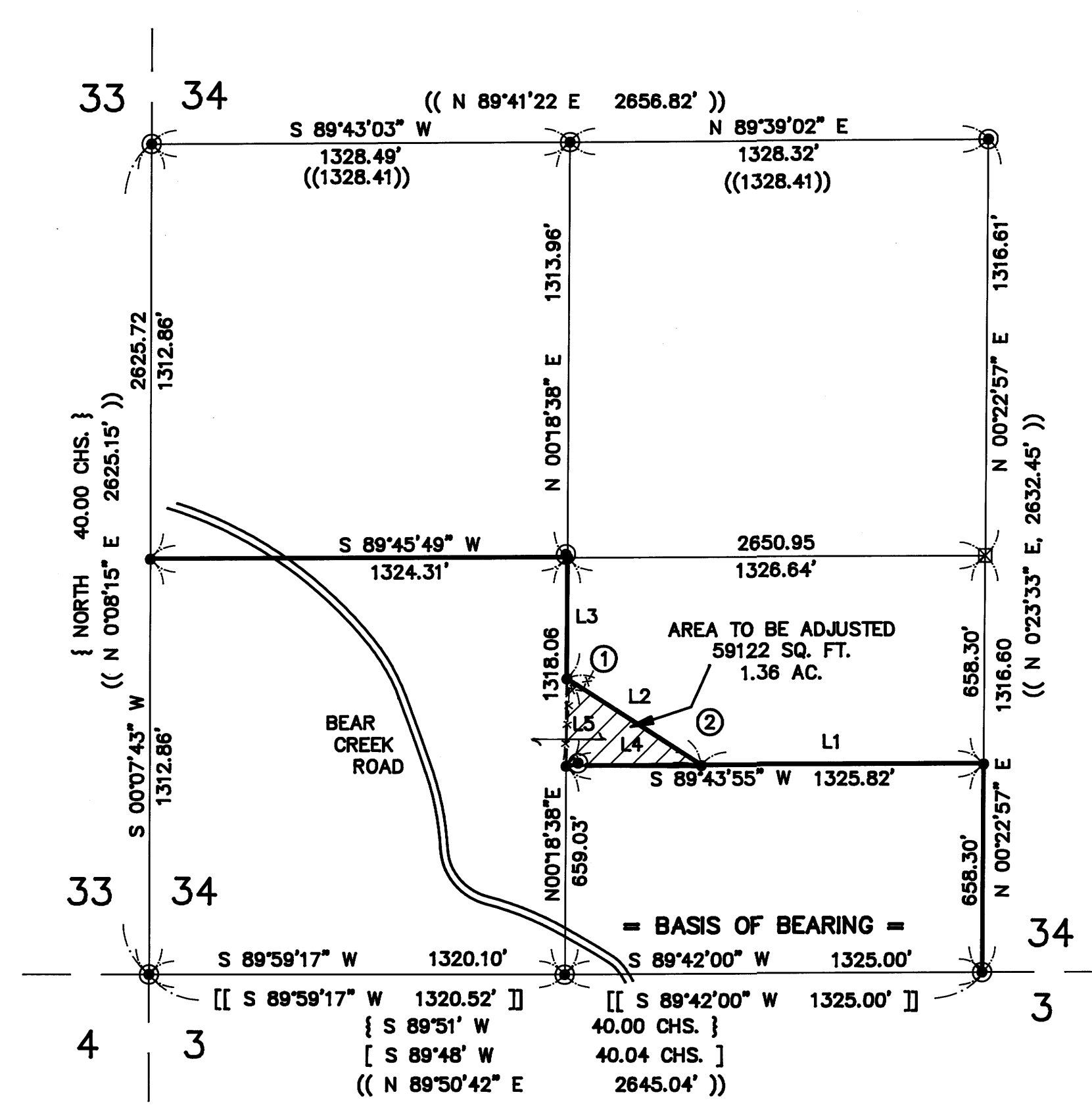
FOUND: U.S.B.L.M. BRASS CAP DATED 1980
13 CEDAR, N 56 E, 19.7' - CLOSED FACE
RECORD: N 56 E, 30 LKS. - 1980 BLM
9" CEDAR, S 53-1/2 E, 18.0' - CLOSED FACE
RECORD: S 53-3/4 E, 27 LKS. - 1980 BLM
15" FIR, S 56 W, 29.5' - CLOSED FACE
RECORD: S 55-1/2 W, 45 LKS. - 1980 BLM
8" FIR, N 33-3/4 W, 38.7' - DOWN AND OUT
RECORD: N 33-1/2 W, 59 LKS - 1980 BLM
7" FIR, N 52 W, 8.5' - VISIBLE SCRIBE
RECORD: N 52 W, 8.5' TO "W" NAIL - 1995 M119-54

WEST 1/16 CORNER 3 & 34

FOUND: U.S.B.L.M. BRASS CAP DATED 1980
16" HEMLOCK, N 12 E, 55.8' TO SPIKE - VISIBLE SCRIBE
RECORD: N 13-1/4 E, 85 LKS. - 1980 BLM
24" YEW, S 55 W, 21.7' TO SPIKE - VISIBLE SCRIBE
RECORD: S 52 W, 32.5 LKS. - 1980 BLM

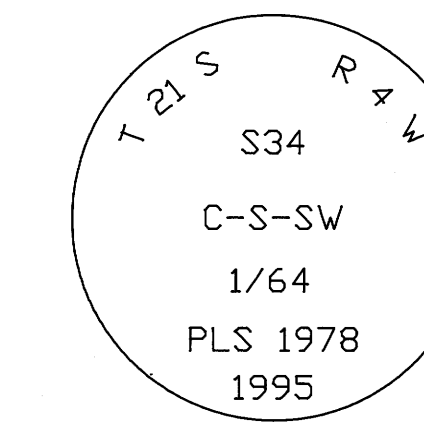
1/4 CORNER 3 & 34

FOUND: U.S.B.L.M. BRASS CAP DATED 1980
17" WHITE FIR, N 2-1/2 E, 47.5' TO SPIKE - VISIBLE SCRIBE
RECORD: NORTH, 47.5 LKS. - 1980 BLM
20" WHITE FIR, S 14-1/2 E, 44.8' TO SPIKE - CLOSED FACE
RECORD: S 18-1/2 W, 70 LKS - 1980 BLM



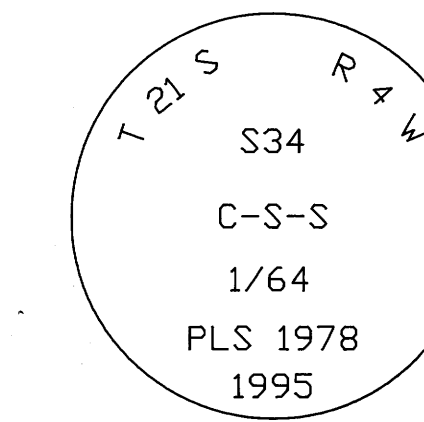
C-S-SW 1/64 CORNER

SET: 2" X 42" IRON PIPE WITH 2-1/2" BRASS CAP DATED 1995
10" POWER POLE, S 78 W, 64.0' TO "W" NAIL
6" FIR, N 4 E, 68.1' TO "W" NAIL
SCRIBED "BT"
6" METAL FENCE POST 1' EAST
NOTE: 3/4" IRON PIPE - UNKNOWN ORIGIN, BEARS S 75'27"45" W, 38.41'



C-S-S 1/64 CORNER

SET: 2" X 42" IRON PIPE WITH 2-1/2" BRASS CAP DATED 1995
11" DOUGLAS FIR, N 53 E, 14.0' TO "W" NAIL
SCRIBED "CSS 1/64 S34 BT"
11" WHITE FIR, N 61 W, 15.1' TO "W" NAIL
SCRIBED "CSS 1/64 S34 BT"
6" METAL FENCE POST 1' WEST



BASIS OF BEARING: EAST 1/2 OF WEST 1/2 OF SOUTH LINE PER M119 - 54

LEGEND

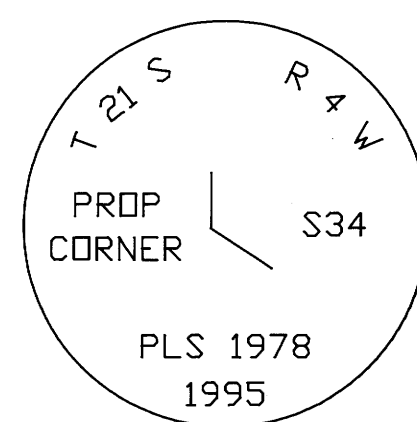
- - CORNERS FOUND (AS NOTED)
- - CORNERS SET AS INDICATED
- - CALCULATED POINT (NOT SET)
- - - - OLD PROPERTY LINE
- — — PROPERTY LINE
- [] - RECORD DATA - 1980 BLM
- [[]] - RECORD DATA - M119-54 DATED 1995
- (()) - RECORD DATA - M106-48 DATED 1988
- { } - RECORD DATA - 1855 GLO
- *- - EXISTING BARB WIRE FENCE

LINE TABLE FOR PROPERTY LINES NEAR C-S-SW 1/16 CORNER

LINE	DIRECTION	DISTANCE
L1	S89°43'55"W	895.82'
L2	N57°30'01"W	508.07'
L3	N00°18'38"E	384.03'
L4	S89°43'55"W	430.00'
L5	N00°18'38"E	275.00'

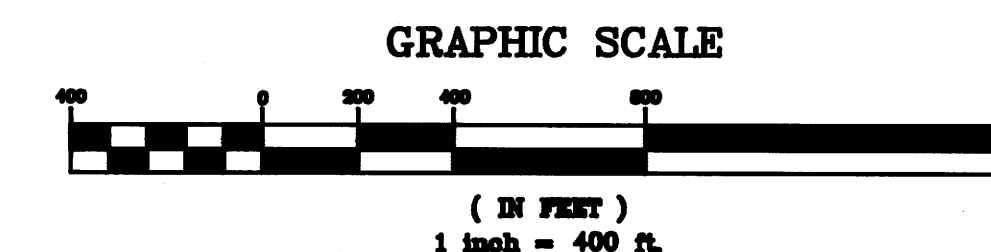
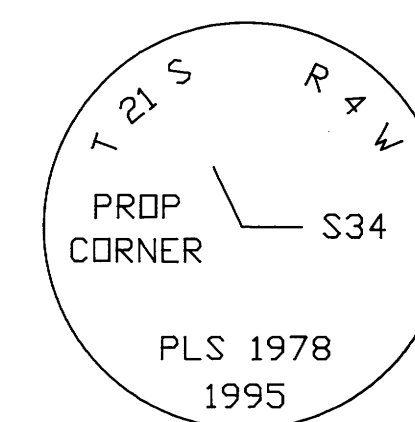
① PROPERTY CORNER

SET: 1-3/4" X 30" GALVANIZED PIPE WITH BRASS CAP DATED 1995
15" FIR, S 41 E, 18.1' TO "W" NAIL
SCRIBED "PC BT"
9" FIR, N 83 E, 17.4' TO "W" NAIL
SCRIBED "PC BT"
6" METAL FENCE POST 1' NORTH



② PROPERTY CORNER

SET: 1-3/4" X 30" GALVANIZED PIPE WITH BRASS CAP DATED 1995
24" FIR, N 20 W, 15.7' TO "W" NAIL
SCRIBED "PC BT"
13" FIR, N 82 E, 19.3' TO "W" NAIL
SCRIBED "PC BT"
6" METAL FENCE POST 1' EAST



Keith Cubic 2/28/96
KEITH CUBIC
DOUGLAS COUNTY PLANNING DIRECTOR

REGISTERED PROFESSIONAL LAND SURVEYOR

Daniel W. Baker
JULY 15, 1982
DANIEL W. BAKER
1978

EXPIRES 12/31/97

SURVEY IN
SW 1/4 OF SECTION 34, T21S, R4W, W.M.
DOUGLAS COUNTY, OREGON

CLIENT: WEYERHAEUSER COMPANY

DRAWN BY: MSD
DATE: R2/16/96
FILE: WEYCO\2104348W
BAKER AND ASSOCIATES, SURVEYORS
1385 OAK STREET-SUITE 3 EUGENE, OREGON
(503) 343-7243