

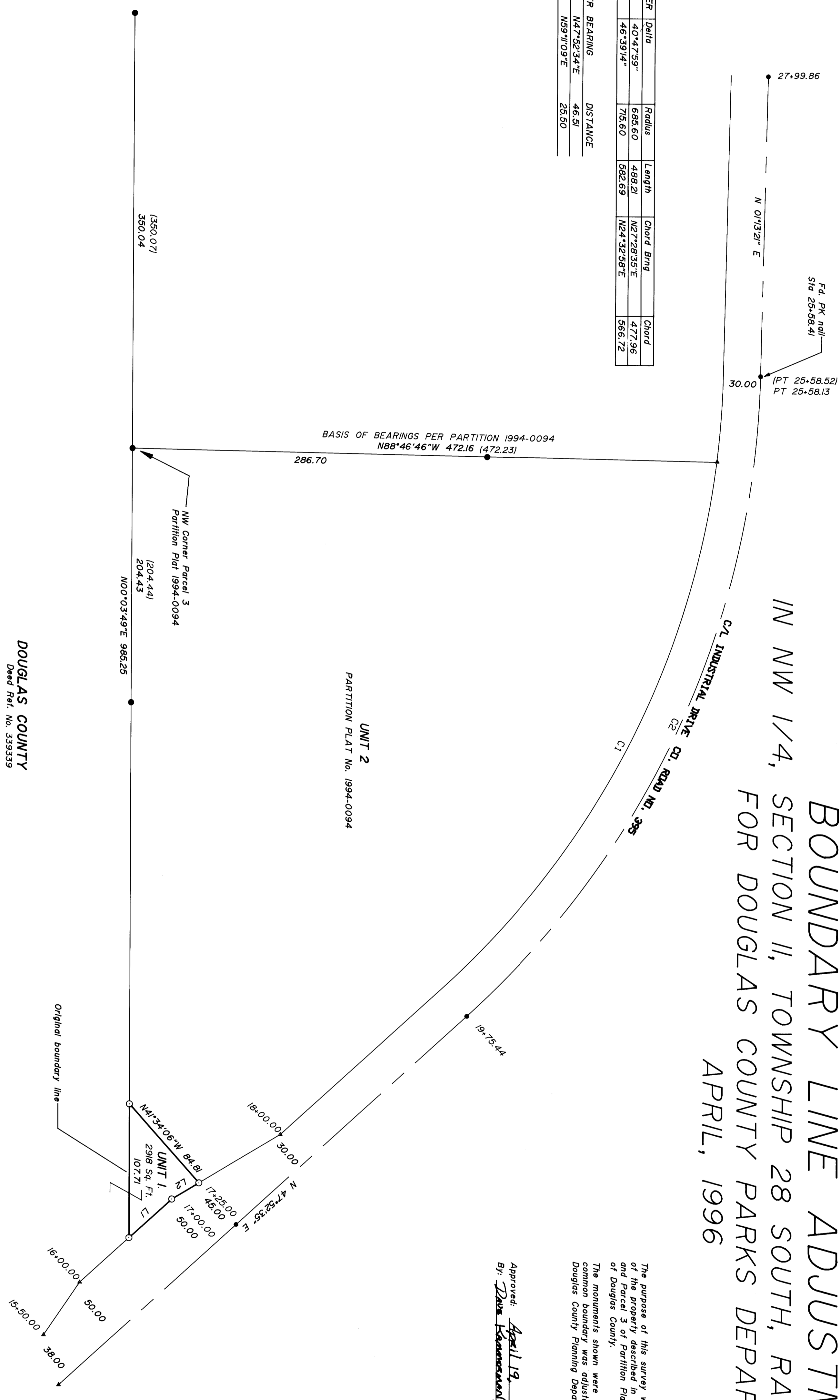
COUNTY SURVEYORS FILE DATA
DO NOT REMOVE FROM OFFICE

BOUNDARY LINE ADJUSTMENT

IN NW 1/4, SECTION II, TOWNSHIP 28 SOUTH, RANGE 6 WEST, W.M. FOR DOUGLAS COUNTY PARKS DEPARTMENT APRIL, 1996

NUMBER	Delta	Radius	Length	Chord Bearing	Chord
C1	40°47'39"	685.60	488.21	N27°28'35"E	477.96
C2	46°39'14"	775.60	582.69	N24°32'59"E	566.72

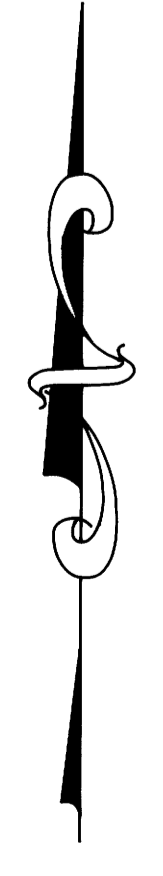
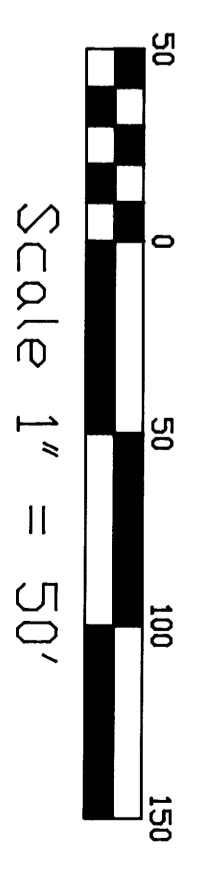
NUMBER BEARING	DISTANCE
L1	N47°32'34"E 46.91
L2	N89°10'09"E 26.90



NARRATIVE
The purpose of this survey was to monument the adjusted boundary of the property described in Deed Reference Number 339339 and Parcel 3 of Partition Plat Number 1994-0094 of the Records of Douglas County.
The monuments shown were used to control the original boundary and the common boundary was adjusted in accordance with the tentative plan in Douglas County Planning Department File Number 94-305.

APPROVAL _____ 1996.
Approved: April 19
By: Dave Kammann, Douglas County Planning Director

- LEGEND:**
- Found 5/8" Iron Rod or as noted.
 - Found PK Nail
 - ▲ Calculated Point
 - Set 5/8" x 30" Iron Rod with Yellow Plastic Cap marked "AA SURVEYING INC."
- RECORD INFORMATION:**
- (1) Partition Plat 1994-0094



REGISTERED
PROFESSIONAL
LAND SURVEYOR

Ronald A. Olinney

RONALD A. OLINNEY
1954
EXP. 12/31/97

AVA

SURVEYING SUPERVISOR, INC.

3076 EAST DIAMOND LAKE BLVD.
ROSEBURG, OREGON 97470
TEL. (541)672-2096
FAX (541)672-0611