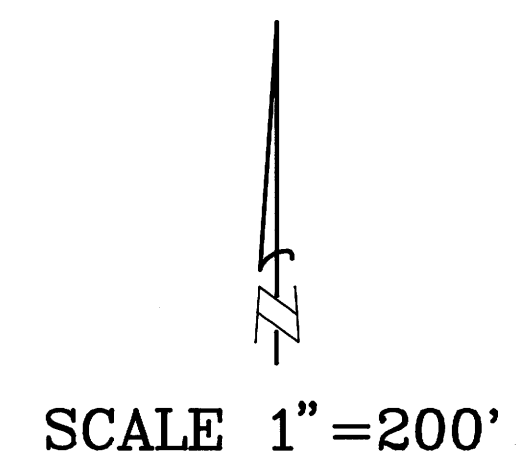


FILED
 Date: 4-16-96 By: JPB
 This survey consists of:
 Map: M124-13
 Narrative:
 Corner Rpt:
 DOUGLAS COUNTY SURVEYOR

COUNTY SURVEYORS FILE DATA
 DO NOT REMOVE FROM OFFICE

1/4 CORNER 4, 5

FOUND: 8" X 4" X 8" ABOVE GROUND STONE ETCHED "1/4S" ON NORTH FACE AND "CS" ON TOP AND "1/4" ON SOUTH FACE
 5/8" IRON ROD ALONGSIDE SOUTH SIDE OF STONE - 1965 DOUGLAS COUNTY
 RECORD: IRON ROD SOUTH OF STONE - 1965 DOUGLAS COUNTY
 20" FIR STUMP, N 27-1/4 E, 14.2 FT. - 5 FT. HIGH W/ CLOSED FACE
 RECORD: N 28°05' E, 21.5 LKS. - GERMOND BOOK 15 PG 29
 ROTTEN STUMP, S 20 W, 14.3 FT. - SCRIBE VISIBLE
 RECORD: S 19-1/2 W, 22.5 LKS. - GERMOND BOOK 15 PG 29
 28" FIR, S 41-1/2 W, 29.2 FT. TO SPIKE SET SIDE CENTER - CLOSED FACE
 RECORD: S 39 W, 29.3 FT. - 1965 DOUGLAS COUNTY
 SET: 9" FIR, S 35 E, 15.2 FT. TO "W" NAIL SCRIBED "1/4 S4 BT"
 21" FIR, N 23 W, 13.6 FT. TO "W" NAIL SCRIBED "1/4 S5 BT"



WEYERHAEUSER COMPANY

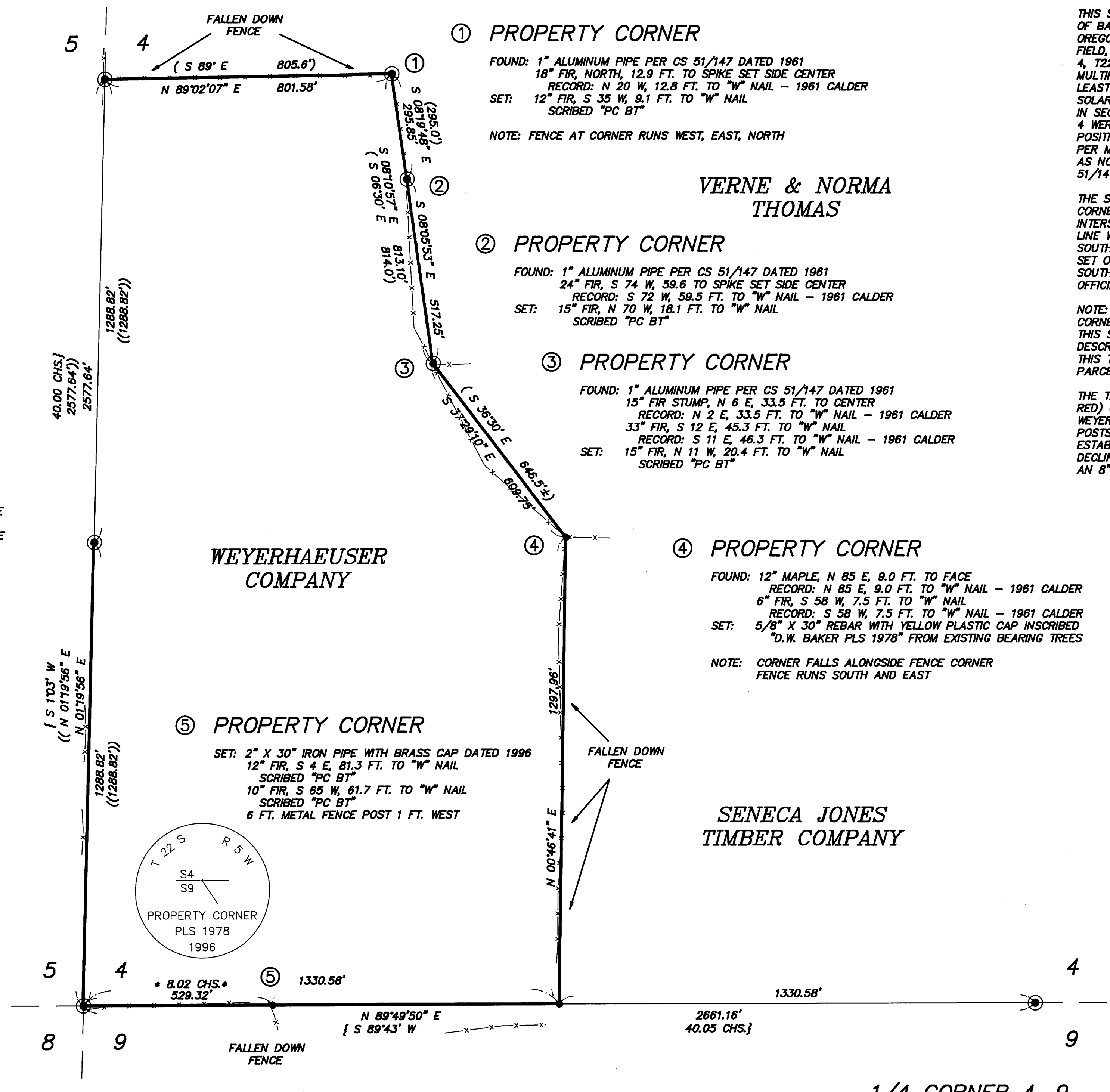
SOUTH 1/16 CORNER 4, 5

FOUND: 2-1/2" BRASS CAP DATED 1992 PER M114-60
 13" FIR, N 48 E, 40.7 FT. TO "W" NAIL - SCRIBE VISIBLE
 RECORD: N 48 E, 40.7 FT. TO "W" NAIL - M114-60
 14" FIR, S 75 W, 40.6 FT. TO "W" NAIL - SCRIBE VISIBLE
 RECORD: S 75 W, 40.6 FT. TO "W" NAIL - M114-60

SENECA JONES TIMBER COMPANY

SECTION CORNER 4, 5, 8, 9

FOUND: 3/4" REBAR PER DOUGLAS COUNTY 1965
 ROTTEN FIR STUMP, S 34 E, 8.4 FT.
 RECORD: S 40 E, 8.4 FT. - 1926 EPPSTEIN
 ROTTEN FIR STUMP, S 59 W, 26.9 FT.
 RECORD: S 63-1/2 W, 26.9 FT. - 1926 EPPSTEIN
 20" FIR STUMP, N 41 W, 32.8 FT. - ROTTEN, VISIBLE SCRIBE
 RECORD: N 40 W, 32.3 FT. - 1926 EPPSTEIN
 29" FIR STUMP, SOUTH, 25.5 FT.
 RECORD: S 8 W, 26.3 FT. - 1959 DOUGLAS COUNTY
 9" OAK SNAG, N 5 W, 102.1 FT. - CLOSED FACE
 RECORD: N 4 W, 102.6 FT. - 1959 DOUGLAS COUNTY
 24" FIR, N 24 E, 49.1 FT. - CLOSED FACE
 RECORD: N 26 E, 49.8 FT. - 1959 DOUGLAS COUNTY
 18" FIR STUMP, S 30-1/4 E, 54.5 FT. - 6 FT. TALL, VISIBLE SCRIBE
 RECORD: S 31 E, 55.0 FT. - 1965 DOUGLAS COUNTY
 21" FIR, S 41-1/4 W, 103.0 FT. - CLOSED FACE
 RECORD: S 39 W, 103.0 FT. - 1965 DOUGLAS COUNTY



1 PROPERTY CORNER

FOUND: 1" ALUMINUM PIPE PER CS 51/147 DATED 1961
 18" FIR, NORTH, 12.9 FT. TO SPIKE SET SIDE CENTER
 RECORD: N 20 W, 12.8 FT. TO "W" NAIL - 1961 CALDER
 SET: 12" FIR, S 35 W, 9.1 FT. TO "W" NAIL SCRIBED "PC BT"

NOTE: FENCE AT CORNER RUNS WEST, EAST, NORTH

VERNE & NORMA THOMAS

2 PROPERTY CORNER

FOUND: 1" ALUMINUM PIPE PER CS 51/147 DATED 1961
 24" FIR, S 74 W, 59.6 TO SPIKE SET SIDE CENTER
 RECORD: S 72 W, 59.5 FT. TO "W" NAIL - 1961 CALDER
 SET: 15" FIR, N 70 W, 18.1 FT. TO "W" NAIL SCRIBED "PC BT"

3 PROPERTY CORNER

FOUND: 1" ALUMINUM PIPE PER CS 51/147 DATED 1961
 15" FIR STUMP, N 6 E, 33.5 FT. TO CENTER
 RECORD: N 2 E, 33.5 FT. TO "W" NAIL - 1961 CALDER
 33" FIR, S 12 E, 45.3 FT. TO "W" NAIL
 RECORD: S 11 E, 46.3 FT. TO "W" NAIL - 1961 CALDER
 SET: 15" FIR, N 11 W, 20.4 FT. TO "W" NAIL SCRIBED "PC BT"

4 PROPERTY CORNER

FOUND: 12" MAPLE, N 85 E, 9.0 FT. TO FACE
 RECORD: N 85 E, 9.0 FT. TO "W" NAIL - 1961 CALDER
 6" FIR, S 58 W, 7.5 FT. TO "W" NAIL
 RECORD: S 58 W, 7.5 FT. TO "W" NAIL - 1961 CALDER
 SET: 5/8" X 30" REBAR WITH YELLOW PLASTIC CAP INSCRIBED "D.W. BAKER PLS 1978" FROM EXISTING BEARING TREES

NOTE: CORNER FALLS ALONGSIDE FENCE CORNER FENCE RUNS SOUTH AND EAST

5 PROPERTY CORNER

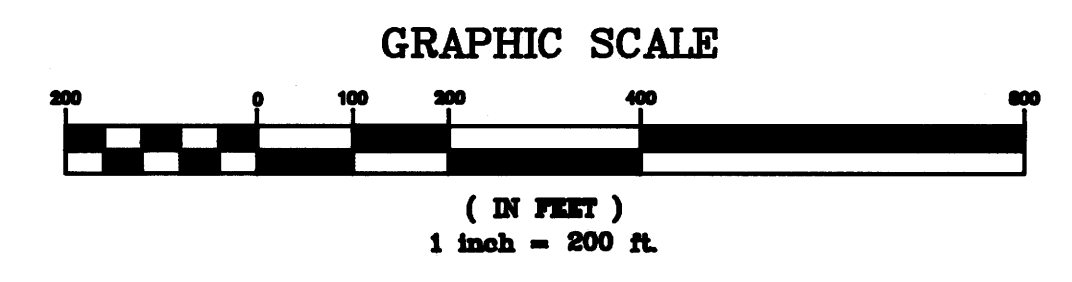
SET: 2" X 30" IRON PIPE WITH BRASS CAP DATED 1996
 12" FIR, S 4 E, 81.3 FT. TO "W" NAIL SCRIBED "PC BT"
 10" FIR, S 65 W, 61.7 FT. TO "W" NAIL SCRIBED "PC BT"
 6 FT. METAL FENCE POST 1 FT. WEST

SENECA JONES TIMBER COMPANY

BASIS OF BEARING: SOLAR OBSERVATION AS COORDINATED WITH M114-60

LEGEND

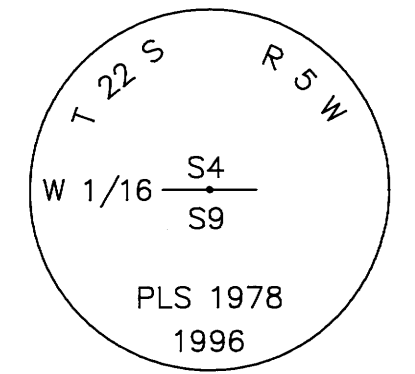
- - CORNERS FOUND (AS NOTED)
- - CORNERS SET (AS NOTED)
- - PROPERTY LINE
- { } - RECORD DATA - 1855 GLO
- () - RECORD DATA - C.S. 51/147
- (()) - RECORD DATA - M114-60
- x- - EXISTING FENCE
- * - DEED REFERENCE - O.R.D.C. BOOK 136 PAGE 504



WEST 1/16 CORNER 4, 9

FOUND: 36" FIR, N 9 W, 61.8 FT. TO SET SPIKE - CLOSED FACE
 RECORD: N 7-1/2 W, 92 LKS. - O.R.D.C. BOOK 1200 PAGE 783

SET: 2" X 30" IRON PIPE WITH BRASS CAP DATED 1996
 33" FIR, S 83 W, 53.5 FT. TO "W" NAIL SCRIBED "W 1/16 S9 BT"
 6 FT. METAL FENCE POST 2 FT. NORTH



1/4 CORNER 4, 9

FOUND: 1-1/4" X 24" IRON BAR PER THIEL 1912
 HAINES "T" IRON, N 83 W, 0.56 FT.
 RECORD: HAINES 1955

REGISTERED PROFESSIONAL LAND SURVEYOR
 DANIEL W. BAKER
 1978
 EXPIRES 12/31/97

MAP: .	TAX LOT: .
SURVEY IN SW 1/4 SECTION 4, T22S, R5W, W.M. DOUGLAS COUNTY, OREGON	
CLIENT: WEYERHAEUSER COMPANY	
DRAWN BY: DHW	BAKER AND ASSOCIATES, SURVEYORS
DATE: 4/10/96	1385 OAK STREET - SUITE 3
FILE: WEYCD\220504	EUGENE, OREGON (541) 343-7243