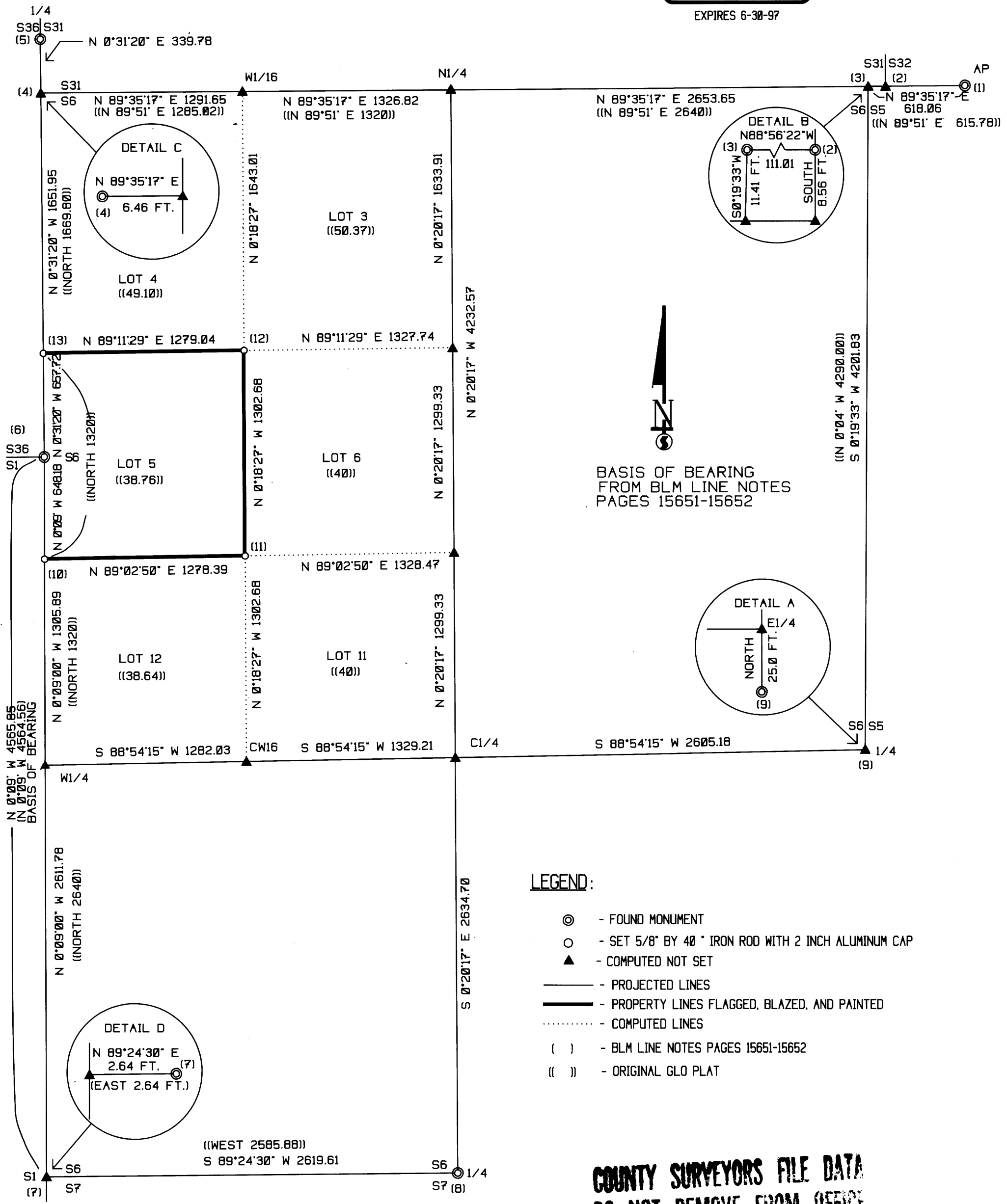


LONE ROCK TIMBER CO.

PO BOX 1127 ROSEBURG OREGON 97470 DATE: APRIL 1996
SECTION 06, TOWNSHIP 31 SOUTH, RANGE 04 WEST, W.M. DOUGLAS COUNTY, OREGON
LONE ROCK TIMBER TRACT: DAUGHERTY SCALE 1" = 600'

REGISTERED PROFESSIONAL LAND SURVEYOR
Ken W. Hoffine
OREGON JULY 16, 1987
KEN W. HOFFINE
EXPIRES 6-30-97



BASIS OF BEARING FROM BLM LINE NOTES PAGES 15651-15652

- LEGEND:**
- ⊙ - FOUND MONUMENT
 - - SET 5/8" BY 40" IRON ROD WITH 2 INCH ALUMINUM CAP
 - ▲ - COMPUTED NOT SET
 - - PROJECTED LINES
 - - PROPERTY LINES FLAGGED, BLAZED, AND PAINTED
 - - COMPUTED LINES
 - () - BLM LINE NOTES PAGES 15651-15652
 - (()) - ORIGINAL GLO PLAT

COUNTY SURVEYORS FILE DATA
DO NOT REMOVE FROM OFFICE

NARRATIVE

THIS SURVEY WAS CONDUCTED TO ESTABLISH PROPERTY LINES FOR TIMBER CUTTING PURPOSES. WE INITIATED THIS SURVEY AT THE CLOSING CORNERS FOR SECTION 31 AND SECTION 32 BACKSIGHTING THE CLOSING CORNER FOR SECTIONS 5 AND 6 MAKING A CLOSED RANDOM TRAVERSE TO ANGLE POINT (CORNER #1). ALL THREE CORNERS WERE RENEWED FROM ORIGINAL EVIDENCE. WE THEN BEGAN A RANDOM TRAVERSE SOUTHWESTERLY THROUGH SECTION 6 WITH LONG SHOTS ON TOP OF RIDGES. WE WERE FIRST ABLE TO TIE IN THE WITNESS CORNER ESTABLISHED FROM ORIGINAL EVIDENCE FOR THE EAST 1/4 CORNER FOR SECTION 6. WE CONTINUED OUR TRAVERSE TO THE SOUTH 1/4 CORNER AND THE SOUTHWEST CLOSING CORNER OF SECTION 6 SET FROM ORIGINAL EVIDENCE. WE THEN TRAVERSED TO THE NORTHWEST CLOSING CORNER OF SECTION 6 AND THE EAST 1/4 CORNER AND SOUTHEAST CORNER OF SECTION 36 ALL RENEWED FROM ORIGINAL EVIDENCE. WE CALCULATED THE POSITION OF ALL CORNERS MENTIONED HERETOFORE AND COMPARED OUR POSITIONS WITH THE GPS POSITIONS FROM P&L DIXONVILLE MERIDIAN TRANSMISSION LINE 91 PLAN TO CHECK A CLOSURE OF BETTER THAN 1:5000. FROM THE SE CORNER OF SECTION 36 WE BEGAN A RANDOM CLOSED TRAVERSE AROUND LOT 5 TO MARK LINES AND SET 1/16 CORNERS AS SHOWN HEREON BASED ON OUR CALCULATION FOR THE SUBDIVISION OF THE NORTHWEST 1/4 OF SECTION 6. THIS SURVEY WAS DONE WITH A LIETZ SET 2 TOTAL STATION WITH GARY ANGIOLET, JERRY RAGON, PAT KELLY AND IGNACIO ROMAN ASSISTING ME.

CORNER INFORMATION

- THE FOLLOWING IS A RECORD OF ALL CORNERS FOUND OR SET DURING THE COURSE OF THIS SURVEY.
- 1) ANGLE POINT
FOUND BLM BRASS CAP SET IN 1985 IN GOOD CONDITION.
-- 30" DOUGLAS FIR STUMP BEARS N42°E, 5.75 FEET (RECORD N45°E, 5.94 FEET) CHOPPED OUT FACE AND BLM TAG
-- ROTTEN STUMP BEARS S62 1/2°W, 15.4 FEET (RECORD S63 1/2°W, 14.52 FEET) BLM TAG
-- 15" DOUGLAS FIR BEARS N77 3/4°E, 48.8 FEET AS PER RECORD, WELL HEALED FACE
CORNER LIES ON STEEP SOUTHEAST SLOPE APPROXIMATELY 115 FEET EAST OF ROCK ROAD 31-4-4.2 IN 20 YEAR OLD TREES.
 - 2) CLOSING CORNER FOR SECTIONS 31, 32
FOUND A 3/4" IRON ROD.
-- 20" DOUGLAS FIR BEARS N61°E, 19.5 FEET (RECORD N64°E, 19.4 FEET) WELL HEALED HIGH FACE AND LOCATION TAG
-- 15" DOUGLAS FIR BEARS N54 3/4°W, 21.1 FEET (RECORD N54°W, 21.2 FEET) WELL HEALED HIGH FACE AND LOCATION TAG
-- 42" DOUGLAS FIR BEARS N58 1/2°E, 63.5 FEET (RECORD N57 1/2°E, 62.7 FEET) CHOPPED OUT FACE AND OLD TAG
-- 49" DOUGLAS FIR BEARS S21°W, 43.2 FEET (RECORD S21 1/2°W, 37.95 FEET) WELL HEALED FACE AND LOCATION TAG
-- 36" DOUGLAS FIR SNAG BEARS N77 1/2°W, 68.0 FEET (RECORD N76 1/4°W, 67.32 FEET) OLD TAG
CORNER LIES ON STEEP SOUTH SLOPE.
 - 3) CLOSING CORNER FOR SECTIONS 5 AND 6
FOUND A 3/4" IRON ROD.
-- 19" FIR SNAG BEARS S80°W, 11.8 FEET (RECORD S78°W, 12.54 FEET) SCRIBING VISIBLE
-- 17" FIR SNAG BEARS S55 1/2°E, 28.1 FEET (RECORD S54 1/2°E, 28.71 FEET) WELL HEALED HIGH FACE
-- 45" DOUGLAS FIR STUMP BEARS S30 3/4°W, 12.4 FEET (RECORD S31 1/2°W, 12.6 FEET) BARK SCRIBING VISIBLE
AND LOCATION TAG
-- 38" DOUGLAS FIR BEARS N63°W, 6.6 FEET (RECORD N68°W, 6.93 FEET) HEALED FACE AND OLD TAG
-- 10" MADRONE BEARS S73 1/4°E, 19.05 FEET (RECORD S71°E, 18.9 FEET) HIGH SCAR AND GROWN OVER TAG
CORNER SITS ON A STEEP SOUTH SLOPE.
 - 4) CLOSING CORNER FOR SECTIONS 6 AND 31
FOUND A DOUGLAS COUNTY SURVEYORS OFFICE BRASS CAP SET IN 1957.
-- 11" VERY ROTTEN STUMP BEARS S23 1/2°W, 25.4 FEET (RECORD S23 1/2°W, 25.08 FEET) SCRIBING VISIBLE
-- 16" MADRONE BEARS N52 1/4°W, 20.9 FEET (RECORD N50°W, 21.2 FEET) VERY WELL HEALED FACE AND BLM TAG
-- 21" DOUGLAS FIR BEARS N54 1/2°E, 49.2 FEET (RECORD N55°E, 48.8 FEET) VERY WELL HEALED FACE AND BLM TAG
-- 24" TALL DOUGLAS FIR STUMP BEARS S83 3/4°E, 47.2 FEET AS PER RECORD, CHOPPED OUT FACE "S6" VISIBLE
CORNER LIES ON SOUTH SLOPE APPROXIMATELY 100 FEET SOUTH AND 250 FEET WEST OF ROAD.
 - 5) 1/4 CORNER FOR SECTIONS 36 AND 31
FOUND DOUGLAS COUNTY BRASS CAP SET 1957 AND 1.0 FEET ABOVE GROUND.
-- 17" MADRONE BEARS N41 1/4°E, 22.0 FEET (ORIGINAL LAUREL N40°E, 22.44 FEET) NO TAG OR FACE BELIEVE
NEW TREE FROM ROOTS OF ORIGINAL
-- 18" INCENSE CEDAR BEARS S61 1/2°E, 19.1 FEET (RECORD S60°E, 19.4 FEET) GOOD SCAR AND LONE ROCK TIMBER TAG
-- 40" ORIGINAL B.T. BEARS S28 3/4°W, 51.9 FEET (RECORD S29°W, 50.8 FEET) BARK SCRIBED AND CHOPPED OUT
FACE, HAINES 1946 TAG AND BLM TAG
CORNER LIES ON 40% NORTHWEST SLOPE 60 FEET NORTH OF GRAVEL ROAD.
 - 6) CORNER OF TOWNSHIPS 30S AND 31S, R5W
FOUND COUNTY SURVEYORS BRASS CAP SET 1957 IN GOOD CONDITION.
-- 23" DOUGLAS FIR BEARS N7 3/4°W, 28.2 FEET (RECORD N7°W, 28.38 FEET) WELL HEALED FACE AND BLM TAG
-- 26" DOUGLAS FIR BEARS S21°E, 18.3 FEET (RECORD S18°E, 18.48 FEET) WELL HEALED FACE AND BLM TAG
-- 9" LIVE OAK (DEAD) BEARS S28 1/2°W, 32.2 FEET (RECORD S29°W, 31.68 FEET) WELL HEALED FACE, BLM TAG
CORNER LIES ON VERY STEEP SOUTH FACING SLOPE APPROXIMATELY 800 FEET SOUTH OF ELECTRICAL TOWER AT END OF ROAD AND 400 FEET NORTH OF DRAIN.
 - 7) THE CLOSING CORNER FOR SECTIONS 6 AND 7
FOUND A 1" IRON ROD AS CALLED IN BLM NOTES PAGE 15651.
-- 20" FIR BEARS N1°E, 17.2 FEET AS PER RECORD, WELL HEALED FACE
-- 6" DOWN MADRONE BEARS N22°E, 12.2 FEET AS PER RECORD
-- 8" DEAD MADRONE BEARS S15°W, 6.0 FEET AS PER RECORD
-- 42" FIR STUMP BEARS N86°E, 168.3 AS PER RECORD, WELL HEALED FACE AND BLM TAG
CORNER LIES APPROXIMATELY 300 FEET WEST OF DIRT ROAD ON SOUTHWEST SLOPE ACCORDING TO BLM NOTES THIS CORNER IS WEST 2.64 FEET FROM TRUE POSITION.
 - 8) 1/4 CORNER BETWEEN SECTIONS 6 AND 7
FOUND A 1 1/4" TRUCK AXLE WITH GEARS.
-- 15" DOUGLAS FIR BEARS N61 1/4°W, 21.6 FEET (RECORD N51°W, 21.1 FEET) SCRIBING VISIBLE AND BLM TAG
-- 15" DOUGLAS FIR BEARS S64°E, 20.9 FEET (RECORD S64°E, 21.0 FEET) WELL HEALED FACE AND BLM TAG
CORNER LIES ON STEEP NORTH SLOPE APPROXIMATELY 40.0 FEET NORTH OF ROAD.
 - 9) WITNESS CORNER FOR 1/4 CORNER BETWEEN SECTIONS 5 AND 6
FOUND COUNTY BRASS CAP FOR WITNESS CORNER. ACTUAL CORNER LOCATION IS NORTH 25.0 FEET.
-- 28" DOUGLAS FIR BEARS S37°W, 6.2 FEET (RECORD S43°W, 6.3 FEET) WELL HEALED FACE NO TAG
-- 21" DOUGLAS FIR STUMP BEARS S24 1/2°E, 22.9 FEET (RECORD S22°E, 23.5 FEET) WELL HEALED FACE NO TAG
CORNER LIES ABOVE CUT BANK ON EAST SIDE OF ROCK ROAD APPROXIMATELY 150 FEET SOUTH OF RAIL CAR BRIDGE.
 - 10) NORTH 1/16 CORNER SECTION 6 ONLY
SET 5/8" X 40" IRON ROD WITH 2 1/2" ALUMINUM CAP MARKED LONE ROCK TIMBER N1/16 S6 1996 PLS 2291 0.8 FEET ABOVE GROUND.
-- 26" DOUGLAS FIR BEARS S89°E, 72.7 FEET, WE SCRIBED N1/16 S6 B.T. AND TAG TREE
-- 20" DOUGLAS FIR BEARS N26 3/4°E, 6.02 FEET, WE SCRIBE N1/16 S6 B.T. AND TAG TREE
CORNER LIES ON WEST BANK OF O'SHEA CREEK 34 FEET SOUTH OF THE MIDDLE OF CREEK AND 30 FEET WEST OF MIDDLE OF CREEK. CORNER LIES IN THE MIDDLE OF A PILE OF ROTTEN LOGS.
 - 11) NORTHWEST 1/16 CORNER OF SECTION 6
SET A 5/8" X 40" IRON ROD WITH 2 1/2" ALUMINUM CAP MARKED LONE ROCK TIMBER S6 NW1/16 1996 PLS 2291.
-- 28" DOUGLAS FIR BEARS N86 1/2°W, 42.4 FEET, WE SCRIBE NW1/16 S6 B.T. AND TAG TREE
-- 28" INCENSE CEDAR BEARS N28 1/2°E, 43.0 FEET, WE SCRIBE NW1/16 S6 B.T. AND TAG TREE
CORNER LIES ON THE WEST EDGE OF WIDE BENCH SPUR RIDGE WHICH BEARS SOUTH DOWN TO CREEK.
 - 12) WEST 1/16 80 SECTION 6
SET 5/8" X 40" IRON ROD WITH 2 1/2" ALUMINUM CAP MARKED LONE ROCK TIMBER W1/16 80 S6 1996 PLS 2291.
-- 18" DOUGLAS FIR BEARS N20°W, 23.3 FEET, WE SCRIBE W1/16 S6 80 B.T. AND TAG TREE
-- 12" DOUGLAS FIR BEARS S14°W, 27.9 FEET, WE SCRIBE W1/16 S6 80 B.T. AND TAG TREE
CORNER LIES ON STEEP WEST FACING SLOPE APPROXIMATELY 300 FEET WEST OF GRAVEL ROAD.
 - 13) 1/16 80 CORNER SECTION 6
SET 5/8" X 40" IRON ROD WITH 2 1/2" ALUMINUM CAP MARKED LONE ROCK TIMBER 1/16 S 36 S6 80 1996 PLS 2291.
-- 47" DOUGLAS FIR BEARS N78 1/4°E, 79.2 FEET, WE SCRIBE 1/16-80 S6 B.T. AND TAG TREE
-- 16" DOUGLAS FIR BEARS S55 1/4°E, 24.4 FEET, WE SCRIBE 1/16-80 S6 B.T. AND TAG TREE
CORNER LIES ON 50% SOUTH SLOPE, FROM THE SOUTHEAST LEG OF POWER LINE TOWER THE CORNER BEARS WEST 344 FEET.

MAP FILE M123-69

MAP FILE M123-69