

Date: 5-14-96 By: JP
This survey consists of:
Map: M123-67
Narrative:
Corner Rpt:

CORNER NOTES

DOUGLAS COUNTY SURVEYOR

SURVEY FOR:

IP TIMBER LANDS OPERATING CO., LTD
711 PORT DOCK ROAD
REEDSPORT, OR. 97467

BOUNDARY LINE SURVEY
LOCATED IN SECTION 14, T.21 S., R.9 W., W.M.
DOUGLAS COUNTY, OREGON

SURVEY BY:

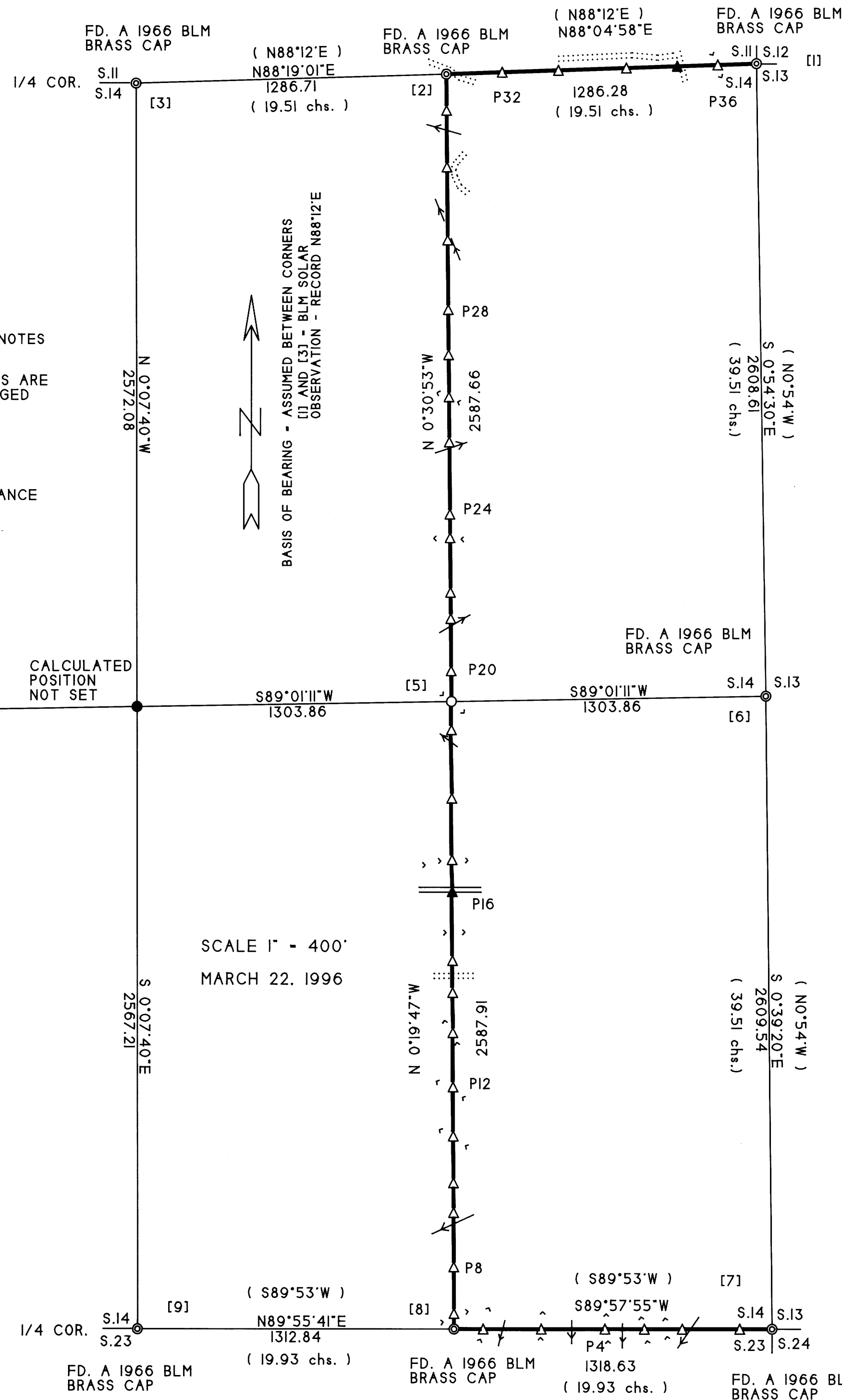
CLYDE F. MULKINS
TIMBER CRUISING & ENGINEERING
P.O. BOX 750
COOS BAY, OR. 97420



EXPIRES 12-31-96

- LEGEND**
- FD. CORNERS AS SHOWN
 - SET CORNERS - SEE CORNER NOTES
 - ↑ 6" ALUM. POST - THESE LINES ARE BLAZED, PAINTED, AND FLAGGED
 - ↑ CROSSING POST
 - [] CORNER REF. NO.
 - () 1966 BLM BEARING AND DISTANCE
 - ← CREEK / DRAW
 - <<< RIDGES
 - ≡ GRAVEL ROAD
 - DIRT ROAD

FD. ORIGINAL POSITION
SEE CORNER NOTES



CORNER #1: FD. A 1966 BLM BRASS CAP AT THE CORNER OF SECTIONS 11, 12, 13, AND 14 FROM WHICH: FD. A 14" HEMLOCK WITH A HEALED FACE BEARS N25°W, 34 lks.; FD. A 14" HEMLOCK WITH A HEALED FACE BEARS N40°E, 24 lks.; FD. A 15" DF STUMP WITH A PARTIAL HEALED FACE BEARS S47°E, 5.9 FT. (RECORD S50°E); RECORD 5" DF BEARS S45°W, 17 lks. - GONE; 1 SCRIBED "S14 BT" ON A 15" DF BEARS S62°W, 10.3 FT.; 1 SCRIBED "S13 BT" ON A 17" DF BEARS S25°E, 26.5 FT.

CORNER #2: FD. A 1966 BLM BRASS CAP AT THE E 1/16 BETWEEN SECTIONS 11 AND 14 FROM WHICH: FD. A 29" DF WITH A HEALED FACE BEARS N68°E, 112 lks.; FD. A 25" DF WITH A HEALED FACE BEARS S46°E, 11.0 FT. (RECORD S51°E, 17 lks.).

CORNER #3: FD. A 1966 BLM BRASS CAP AT THE 1/4 CORNER BETWEEN SECTIONS 11 AND 14 FROM WHICH: FD. A 14" DF WITH A HEALED FACE BEARS N59°W, 16 lks.; FD. AN 11" DF WITH A HEALED FACE BEARS S42°E, 23 lks.; 1 SCRIBED "1/4 S11 BT" ON A 13" DF BEARS N13°E, 15.0 FT.; 1 SCRIBED "1/4 S14 BT" ON A 14" DF BEARS S46°W, 23.5 FT. THE CORNER FALLS ON A RIDGE TOP - ALSO FALLS 60 EAST OF GRAVEL ROAD.

CORNER #4: SET A 3/4" X 12" ALUM. ROD WITH A 3 1/4" ALUM. CAP IN SAND STONE AT THE 1/4 CORNER BETWEEN SECTION 14 AND 15 FROM WHICH: FD. A 21" DF STUMP WITH VISIBLE SCRIBES BEARS N22°W, 37.6 FT.; RECORD 6" HEMLOCK BEARS N2°E, 49 lks. - GONE; 1 BARK SCRIBED "1/4 S14 BT" ON A 7" ALDER BEARS N56°E, 41.2 FT.; A 5" STEEL FENCE POST BEARS S3°W, 21.4 FT.; A 5" STEEL FENCE POST BEARS N72°W, 46.8 FT. BOTH FENCE POSTS ARE ON THE NORTH EDGE OF A GRAVEL ROAD.

CORNER #5: SET A 5/8" X 30" REBAR WITH A 2" ALUM. CAP AT THE CE 1/16 OF SECTION 14 FROM WHICH: 1 SCRIBED "CE 1/16 BT" ON A 9" DF BEARS N14°E, 9.7 FT.; 1 SCRIBED "CE 1/16 BT" ON AN 11" DF BEARS S39°W, 7.9 FT. THE CORNER FALLS AT THE BASE OF A SAND STONE FACE.

CORNER #6: FD. A 1966 BLM BRASS CAP AT THE 1/4 CORNER OF SECTIONS 13 AND 14 FROM WHICH: FD. A 13" DF WITH A HEALED FACE BEARS S43°W, 34 lks.; FD. A 15" DF WITH A HEALED FACE BEARS S42°E (RECORD S49 1/2°E), 16 lks.; 1 SCRIBED "1/4 S14 BT" ON A 10" DF BEARS N46°W, 17.4 FT.; 1 SCRIBED "1/4 S14 BT" ON A 17" DF BEARS N27°W, 12.2 FT.

CORNER #7: FD. A 1966 BLM BRASS CAP AT THE CORNER OF SECTIONS 13, 14, 23, AND 24 FROM WHICH: FD. A 17" ALDER WITH VISIBLE BARK SCRIBES BEARS S66°W, 25.1 FT. (RECORD 39 lks.); FD. A 13" DF WITH A HEALED FACE BEARS S40 1/2°E, 17 lks.; FD. A 14" DF WITH A HEALED FACE BEARS N80°E, 66 lks.; FD. A 15" DF WITH A HEALED FACE BEARS N17 1/2°W, 131 lks.; FD. THE REMAINS OF ORIGINAL DF STUMP BEARS N55°W, 18.5 FT. (RECORD 29 lks.).

CORNER #8: FD. A 1966 BLM BRASS CAP AT THE E 1/16 BETWEEN SECTIONS 14 AND 23 FROM WHICH: FD. A 14" DF WITH A HEALED FACE BEARS S53°W, 36 lks.; FD. A 13" DF WITH A HEALED FACE BEARS N78°E, 20 lks.

CORNER #9: FD. A 1966 BLM BRASS CAP AT THE 1/4 CORNER BETWEEN SECTIONS 14 AND 23 FROM WHICH: FD. A 17" DF WITH A HEALED FACE BEARS N17°E, 42.2 FT. (RECORD 67 lks.); THE RECORD 6" DF BEARS S5°E, 68 lks. - UPROOTED; 1 SCRIBED "1/4 S14 BT" ON A 13" DF BEARS N60°W, 28.7 FT.; 1 SCRIBED "1/4 S23 BT" ON A 12" DF BEARS S7°E, 11.9 FT.; 1 SCRIBED "1/4 S14 BT" ON A 12" DF BEARS N80°E, 18.9 FT.

NARRATIVE

THE PURPOSE OF THIS SURVEY WAS TO MARK THE PROPERTY LINES AS SHOWN FOR FOREST MANAGEMENT OPERATIONS. CONTROL FOR THIS SURVEY WAS BASED ON THE BLM'S 1966 DEPENDENT RESURVEY, PORTION OF SUBDIVISIONAL LINES, T.21 S., R.9 W. THIS WAS A CLOSED LOOP TRAVERSE.

THE FIELD WORK WAS PERFORMED BETWEEN MARCH 12 AND MARCH 21, 1996. ASSISTING ME WITH THIS SURVEY WERE TROY RAMBO, RANDY MADDEN, AND JASON SMITH. A TOPCON GTS-301 TOTAL STATION WAS USED FOR TRAVERSING.

**COUNTY SURVEYORS FILE DATA
DO NOT REMOVE FROM OFFICE**

POSTING NOTES

POST	DIST.	DIR.	TO	TREE	REFERENCE	DIST.
1	134		SE SEC	11" DF	N33°E	7.0
2	372			14" DF	N01°E	7.2
3	529			7" DF	S78°E	2.7
4	693			8" DF	N72°W	5.6
5	957			10" DF	S87°W	5.2
6	1198			11" DF	S45°E	6.3
7	64	s	E 1/16	11" DF	N19°E	8.6
8	255	s		10" DF	S08°W	10.7
9	480	s		14" DF	N48°W	7.9
10	602	s		9" DF	N08°E	3.8
11	795	s		8" DF	S68°W	6.2
12	998	s		12" DF	S65°W	2.4
13	1221	s		10" DF	S16°W	17.7
14	1387	s		13" DF	S27°E	1.2
15	1519	s		15" ALDER	N66°W	2.3
16	1803	s		22" DF	N39°E	25.4
17	1935	s		21" DF	N35°E	4.9
18	2188	s		14" DF	S82°W	9.5
19	2471	s		10" DF	S49°E	10.7
20	126	s	CE 1/16	14" DF	N59°W	9.6
21	342	s		16" DF	N29°E	16.3
22	450	s		21" DF	S03°W	7.0
23	675	s		6" DF	N70°W	3.5
24	772	s		16" DF	S37°E	2.0
25	1070	s		13" ALDER	N46°E	1.4
26	1256	s		14" DF	S68°W	9.4
27	1430	s		14" DF	N26°W	4.0
28	1617	s		13" DF	S63°E	14.2
29	1904	s		14" DF	S54°W	10.0
30	2204	s		12" DF	S51°E	4.4
31	2438	s		14" DF	N89°W	1.8
32	232	w	E 1/16	17" DF	S46°W	10.4
33	465	w		15" DF	N74°E	1.5
34	747	w		15" HEMLOCK	N82°E	11.6
35	958	w		10" DF	N18°E	6.5
36	1126	w		14" DF	S72°E	8.7

MAP FILE M123-67

MAP FILE M123-67