

LONE ROCK TIMBER CO.

PO BOX 1127 ROSEBURG OREGON 97470 DATE: APRIL 1996
 SECTION 10, TOWNSHIP 24 SOUTH, RANGE 06 WEST, W.M. DOUGLAS COUNTY, OREGON
 LONE ROCK TIMBER TRACT: J 24-6-10 SCALE 1" = 600'

**COUNTY SURVEYORS FILE DATA
 DO NOT REMOVE FROM OFFICE**

FILED
 Date: 5-13-96 By: *JP*
 This survey consists of:
 Map: M/23-66
 Narrative:
 Corner Rpt:
 DOUGLAS COUNTY SURVEYOR *CB*

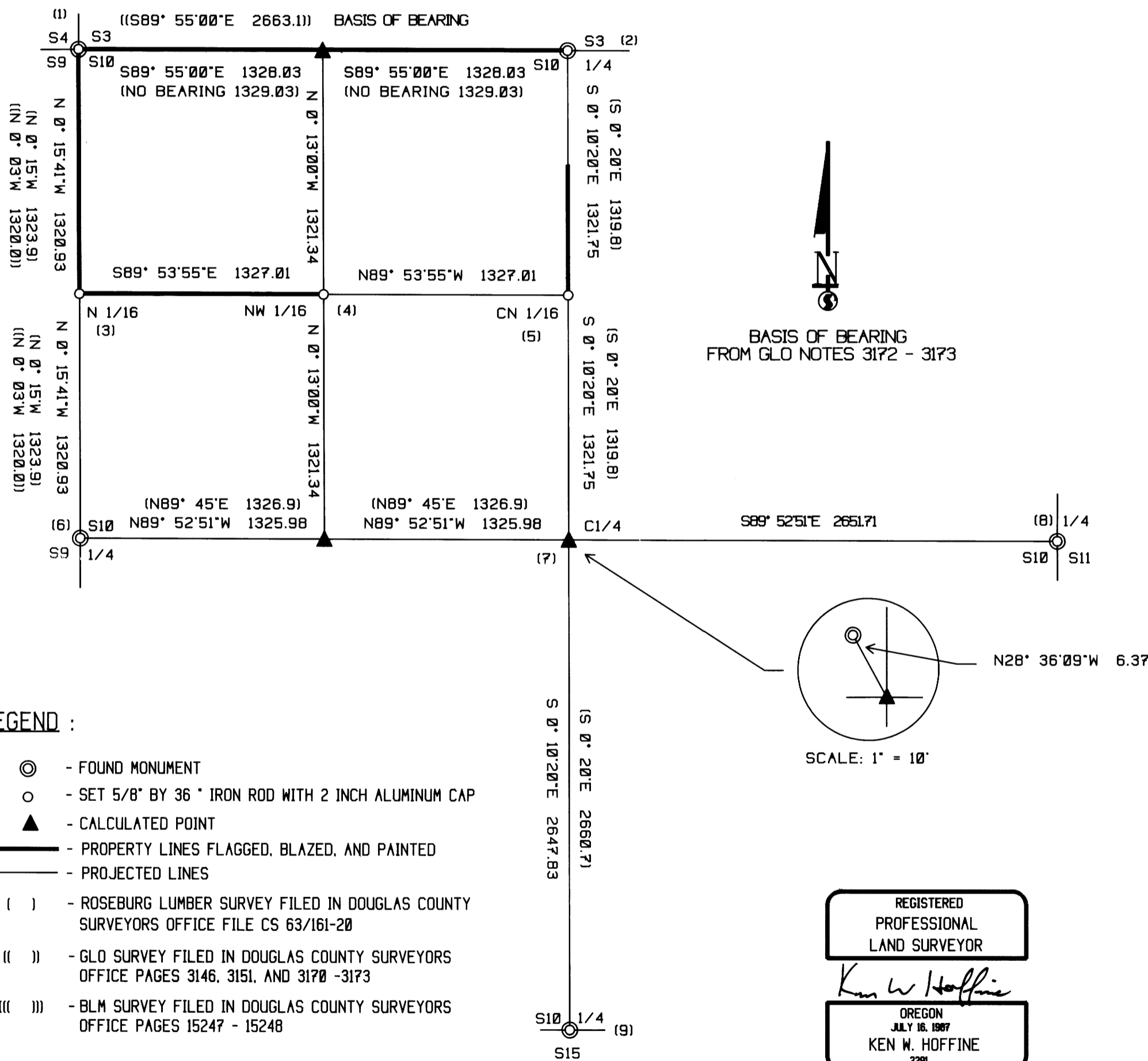
NARRATIVE

THIS SURVEY WAS CONDUCTED TO ESTABLISH PROPERTY LINES FOR TIMBER CUTTING PURPOSES. WE INITIATED THIS SURVEY AT THE NORTH 1/4 CORNER OF SECTION 10 A COUNTY BCIP SET FROM ORIGINAL EVIDENCE. WE BEGAN A RANDOM TRAVERSE WESTERLY TO THE NORTHWEST CORNER OF SECTION 10, A COUNTY BCIP SET FROM ORIGINAL EVIDENCE, CONTINUING SOUTHERLY TO THE WEST 1/4 OF SECTION 10 A COUNTY BCIP SET FROM ORIGINAL EVIDENCE. WE THEN CONTINUED EASTERLY TO A POINT NEAR THE NORTHWEST 1/16 CORNER FINDING A TAG ON A STUMP FOR APPROXIMATE CORNER LOCATION BY ROSEBURG LUMBER. WE WERE ABLE TO MAKE A COUPLE OF LONG SHOTS ACROSS RIDGES TO TIE BACK INTO THE NORTH 1/4 CORNER TO CLOSE THIS TRAVERSE. FROM A POINT IN A CLEARCUT, NEAR THE NORTH 1/4 CORNER WE WERE ABLE TO TIE DIRECTLY INTO THE EAST 1/4 CORNER LOCATED IN AN OPEN PASTURE AND MAKE A SMALL TRAVERSE INTO THE SOUTH 1/4. FROM THE SAME POINT NEAR THE NORTH 1/4 WE BEGAN ANOTHER TRAVERSE SOUTHERLY TO A POINT NEAR THE CENTER NORTH 1/16 FINDING A TAG ON A TREE FOR APPROXIMATE CORNER LOCATION BY ROSEBURG LUMBER. WE CONTINUED THIS TRAVERSE SOUTHERLY TO A 1/2" IRON PIPE SET BY NEIGHBOR, MR. BILL WILLIAMS, FOR THE CENTER 1/4 CORNER OF SECTION 10 TO REPLACE A WOODEN POST FROM WHEN ROSEBURG LUMBER DID A COMPASS SURVEY IN 1975. WE THEN CONTINUED OUR SURVEY TO TIE BACK INTO OUR MAIN TRAVERSE NEAR THE NORTHWEST 1/16 CORNER. WE THEN SET THE CENTER NORTH 1/16, NORTHWEST 1/16 AND THE NORTH 1/16 CORNER BETWEEN SECTION 9 AND 10 ACCORDING TO OUR CALCULATIONS AND MARKED PROPERTY LINE AS SHOWN HEREON. THIS SURVEY WAS DONE WITH A LIETZ SET 2 TOTAL STATION WITH GARY ANGIOLET, JERRY RAGON AND IGNACIO ROMAN ASSISTING ME.

CORNER INFORMATION

THE FOLLOWING IS A RECORD OF ALL CORNERS FOUND OR SET DURING THE COURSE OF THIS SURVEY.

- 1) SECTION CORNER FOR SECTIONS 3, 4, 9 AND 10
 FOUND: A 2 1/2 INCH COUNTY BRASS CAP 1 FOOT ABOVE GROUND.
 -- 29" DOUGLAS FIR BEARS N13 3/4"E, 37.8 FEET (RECORD N15"E, 38.3 FEET) WELL HEALED FACE WITH COUNTY TAG.
 -- 31" DOUGLAS FIR BEARS N50 1/4"W, 22.1 FEET, WELL HEALED FACE WITH COUNTY TAGS
 -- 35" DOUGLAS FIR BEARS S37 1/2"W, 20.2 FEET (RECORD S36"W, 20.0 FEET) VISIBLE BARK SCRIBING AND COUNTY TAG.
 -- 46" ORIGINAL DOUGLAS FIR BEARS N87 1/2"W, 48.6 FEET (RECORD N87"W, 49.5 FEET) WELL HEALED FACE WITH TWO BLM TAGS
 CORNER LOCATED ON A SOUTHEAST MODERATE SLOPE APPROXIMATELY 150 FEET WEST OF A SMALL CREEK.
- 2) 1/4 CORNER FOR SECTIONS 3 AND 10
 FOUND: COUNTY BRASS CAP 1 FOOT ABOVE GROUND IN GOOD CONDITION.
 -- 28" DOUGLAS FIR BEARS S70"E, 2.4 FEET, WELL HEALED FACE WITH BLM TAG
 -- 28" DOUGLAS FIR BEARS N23"W, 43.3 FEET, WELL HEALED FACE WITH BLM TAG
 CORNER LOCATED ON AN EXTREMELY STEEP EAST FACING SLOPE WITH A CLEARCUT TO THE SOUTHWEST.
- 3) NORTH 1/16 BETWEEN SECTION 9 AND 10
 SET: 5/8" X 36" REBAR WITH A 2" ALUMINUM CAP MARKED LONE ROCK TIMBER N1/6, S9, S10 1996 PLS 2291.
 -- 7" DOUGLAS FIR BEARS S36"W, 35.5 FEET, WE SCRIBED N1/6 S9 BATE AND TAGGED
 -- 10" DOUGLAS FIR BEARS S73 1/2"E, 23.5 FEET, WE SCRIBED N1/6 S10 B.T. AND TAGGED
 CORNER LIES ON FLAT GROUND APPROXIMATELY 100 FEET SOUTH OF A STEEP NORTH FACING CUT BANK.
- 4) NORTHWEST 1/16 SECTION 10
 SET: 5/8" X 36" REBAR WITH A 2" ALUMINUM CAP MARKED LONE ROCK TIMBER NW1/6 S10 1996 PLS 2291.
 -- 8" DOUGLAS FIR BEARS S64 1/2"W, 16.8 FEET, WE SCRIBED NW1/6 S10 B.T. AND TAGGED
 -- 8" DOUGLAS FIR BEARS N20 1/4"W, 11.1 FEET, WE SCRIBED NW1/6 S10 B.T. AND TAGGED
 CORNER LIES ON EXTREMELY STEEP SOUTH SLOPE DIRECTLY BETWEEN TWO LONG FLAT ROCKS. WE MOUNDED THE CORNER IN SMALLER ROCK APPROXIMATELY 100 FEET SOUTH OF RIDGE.
- 5) CENTER NORTH 1/16 SECTION 10
 SET: 5/8" X 36" REBAR WITH 2" ALUMINUM CAP MARKED LONE ROCK TIMBER CN1/6 S10 1996 PLS 2291.
 -- 21" DOUGLAS FIR BEARS N40 1/2"W, 20.8 FEET, WE SCRIBED CN1/6 S10 B.T. AND TAGGED
 -- 25" DOUGLAS FIR BEARS S42 3/4"E, 42.2 FEET, WE SCRIBED CN1/6 S10 B.T. AND TAGGED
 CORNER LIES ON FLAT AT TOE OF A STEEP NORTHERLY SLOPE AND APPROXIMATELY 100 FEET SOUTH OF AN OLD SKID ROAD.
- 6) 1/4 CORNER SECTION 9 AND 10
 FOUND: COUNTY SURVEYORS BRASS CAP 0.5 FEET ABOVE GROUND.
 -- 47" DOUGLAS FIR STUMP N37 1/2"E, 5.5 FEET (RECORD N40"E, 5.9 FEET) WITH CHOPPED OUT FACE AND LOCATION TAG ON EAST SIDE OF STUMP.
 -- 19" DOUGLAS FIR BEARS S78"W, 45.3 FEET, WELL HEALED FACE WITH BLM LOCATION TAGS ON NORTH SIDE OF TREE
 -- 37" DOUGLAS FIR BEARS S66"W, 85.6 FEET (RECORD S65 3/4"W, 86.5 FEET) CHOPPED OUT FACE NO TAG
 CORNER LIES ON A VERY STEEP SOUTH SLOPE APPROXIMATELY 250 FEET SOUTH OF RIDGE.
- 7) CENTER 1/4 SECTION 10
 FOUND: 1/2 INCH IRON PIPE (RECORD 1 1/2 INCH IRON PIPE) 1.0 FEET ABOVE GROUND N28°36'09"W, 6.37 FEET FROM CALCULATED C1/4.
 -- 11" DOUGLAS FIR BEARS S1 1/2"E, 26.6 FEET, WE TAGGED BUT DID NOT SCRIBE
 -- 10" DOUGLAS FIR BEARS N84 1/2"W, 21.1 FEET, WE TAGGED BUT DID NOT SCRIBE
 CORNER LIES ON A STEEP EAST SLOPE.
- 8) 1/4 CORNER SECTION 10 AND 11
 FOUND: BLM BRASS CAP 0.4 FEET ABOVE GROUND SET IN CEMENT.
 -- 18" OAK BEARS N39 1/4"E, 73.4 FEET, WE TAGGED
 -- 12" DOWN OAK N77"W, 215.4 FEET TO STUMP HOLE
 -- WEST CEDAR FENCE POST ON HINGE SIDE OF GATE, BEARS N51 3/4"W, 15.43 FEET
 -- SOUTHWEST EDGE OF BARN BEARS S60 3/4"E, 114.8 FEET
 -- NORTHWEST EDGE OF BARN BEARS S78 1/2"E, 99.9 FEET
 CORNER LIES IN COW PASTURE ON MODERATE WESTERLY SLOPE APPROXIMATELY 50' EAST OF GRAVEL ROAD.
- 9) 1/4 CORNER SECTION 10 AND 15
 FOUND: BLM BRASS CAP 0.5 FEET ABOVE GROUND.
 -- 48" ORIGINAL DOUGLAS FIR STUMP BEARS S12 1/2"E, 19.5 FEET (RECORD S14"W, 19.8 FEET) SAWED OUT FACE WITH BLM TAG
 -- 20" GRAND FIR BEARS N75 3/4"E, 34.9 FEET (RECORD N79"E, 35.0 FEET) WELL HEALED FACE WITH BLM TAGS
 -- 15" GRAND FIR BEARS S59 3/4"W, 13.4 FEET (RECORD S63"W, 13.2 FEET) WELL HEALED FACE WITH BLM TAGS
 -- 19" GRAND FIR BEARS N65"E, 14.3 FEET (RECORD TO ROSEBURG LUMBER CO. 1 1/2" PIPE) WELL HEALED FACE
 -- 9" DOUGLAS FIR BEARS S48"W, 7.1 FEET (RECORD TO ROSEBURG LUMBER CO. 1 1/2" PIPE) WELL HEALED FACE
 -- 1 1/2" IRON PIPE 2 FEET TALL BEARS N36 1/2"W, 3.1 FEET (RECORD FROM BLM BRASS CAP N28"W, 3.3 FEET)
 CORNER LIES ON FLAT RIDGE TOP 2 FEET SOUTH OF FENCE JUNCTION FENCE RUNS EAST, WEST AND SOUTH.



LEGEND :

- ⊙ - FOUND MONUMENT
- - SET 5/8" BY 36" IRON ROD WITH 2 INCH ALUMINUM CAP
- ▲ - CALCULATED POINT
- - PROPERTY LINES FLAGGED, BLAZED, AND PAINTED
- - - - - PROJECTED LINES
- () - ROSEBURG LUMBER SURVEY FILED IN DOUGLAS COUNTY SURVEYORS OFFICE FILE CS 63/161-20
- () - GLO SURVEY FILED IN DOUGLAS COUNTY SURVEYORS OFFICE PAGES 3146, 3151, AND 3170 -3173
- () - BLM SURVEY FILED IN DOUGLAS COUNTY SURVEYORS OFFICE PAGES 15247 - 15248

MAP FILE M/23-66

MAP FILE M/23-66