

Date: 5-2-96 By: JP  
This survey consists of:  
Map: M123-60  
Narrative:  
Corner Rpt:

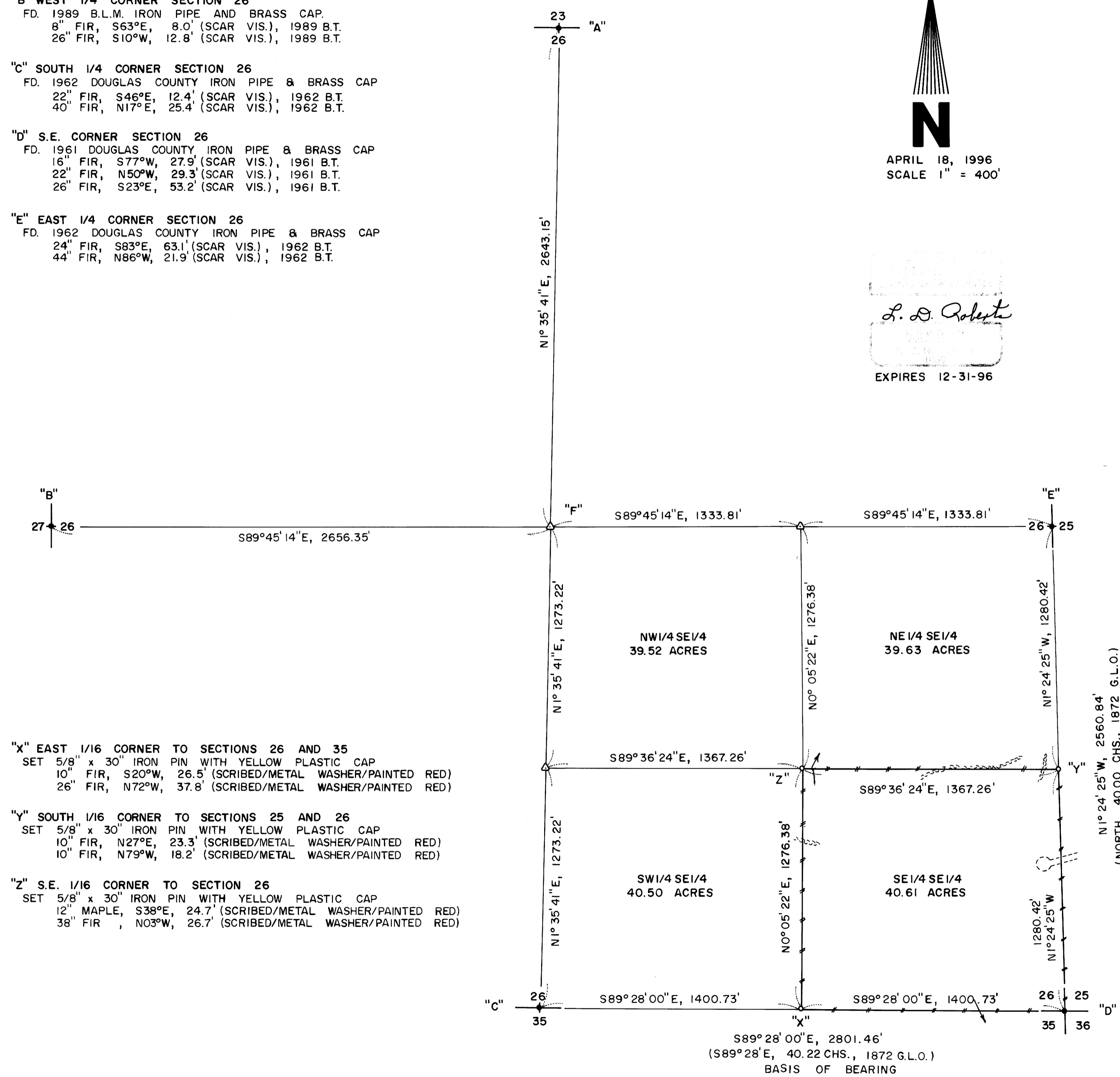
COUNTY SURVEYORS FILE DATA  
DO NOT REMOVE FROM OFFICE

DOUGLAS COUNTY  
SURVEYOR

- "A" NORTH 1/4 CORNER SECTION 26 (AMENDED)  
FD. 1962 B.L.M. IRON PIPE AND BRASS CAP TRUE CORNER BEARS N26°00'W, 7.05' (DATA FROM EUGENE B.L.M. OFFICE)  
18" CEDAR, S65°W, 53.7' (SCAR VIS.), 1962 B.T.  
18" FIR, N32°W, 37.1' (SCAR VIS.), 1962 B.T.
- "B" WEST 1/4 CORNER SECTION 26  
FD. 1989 B.L.M. IRON PIPE AND BRASS CAP.  
8" FIR, S63°E, 8.0' (SCAR VIS.), 1989 B.T.  
26" FIR, S10°W, 12.8' (SCAR VIS.), 1989 B.T.
- "C" SOUTH 1/4 CORNER SECTION 26  
FD. 1962 DOUGLAS COUNTY IRON PIPE & BRASS CAP  
22" FIR, S46°E, 12.4' (SCAR VIS.), 1962 B.T.  
40" FIR, N17°E, 25.4' (SCAR VIS.), 1962 B.T.
- "D" S.E. CORNER SECTION 26  
FD. 1961 DOUGLAS COUNTY IRON PIPE & BRASS CAP  
16" FIR, S77°W, 27.9' (SCAR VIS.), 1961 B.T.  
22" FIR, N50°W, 29.3' (SCAR VIS.), 1961 B.T.  
26" FIR, S23°E, 53.2' (SCAR VIS.), 1961 B.T.
- "E" EAST 1/4 CORNER SECTION 26  
FD. 1962 DOUGLAS COUNTY IRON PIPE & BRASS CAP  
24" FIR, S83°E, 63.1' (SCAR VIS.), 1962 B.T.  
44" FIR, N86°W, 21.9' (SCAR VIS.), 1962 B.T.

BOUNDARY SURVEY  
FOR  
SENECA JONES TIMBER COMPANY  
IN  
SECTION 26, T20S, R6W, W.M.  
DOUGLAS COUNTY, OREGON  
BY  
ROBERTS SURVEYING INC.  
P.O. BOX 7155  
EUGENE, OREGON 97401  
PHONE 345-1112

**N**  
APRIL 18, 1996  
SCALE 1" = 400'  
*L. D. Roberts*  
EXPIRES 12-31-96



LEGEND,

- MONUMENTS FOUND AND USED FOR CONTROL
  - △ COMPUTED POINT - NO MONUMENT SET
  - MONUMENTS SET - 5/8" x 30" IRON PINS WITH YELLOW PLASTIC CAPS. CAPS MARKED "ROBERTS P.L.S. 1039"
  - //— LINES BLAZED, PAINTED AND MARKED WITH GREEN METAL FENCE POSTS
  - ( ) DATA OF RECORD - 1872 G.L.O. SURVEY BY J.H. McCLUNG. 1989 B.L.M. SURVEY BY WAYNE L. ROGERS.
- BASIS OF BEARING - LINE "C-D" FROM 1872 G.L.O. SURVEY  
DISTANCES TO B.T.'S ARE CENTER MEASURE
- ALL NEW B.T.'S ARE SCRIBED AND HAVE A METAL WASHER STAMPED "P.L.S. 1039" NAILED TO LOWER BLAZE. SCRIBED BLAZES ARE PAINTED RED.

NARRATIVE, THE PURPOSE OF THIS SURVEY IS TO BLAZE, PAINT AND POST THE SOUTH, EAST, NORTH AND WEST BOUNDARIES OF THE SE 1/4 SE 1/4 OF SECTION 26. ALSO TO SET THE S.W. CORNER, THE N.E. CORNER AND THE N.W. CORNER OF SAID SE 1/4 SE 1/4. THE SOUTH 1/4 CORNER, THE WEST 1/4 CORNER, THE NORTH 1/4 CORNER, THE EAST 1/4 CORNER AND THE S.E. SECTION CORNER WERE FOUND IN THE FIELD AND USED AS CONTROL FOR THIS SURVEY. A SERIES OF RANDOM CONTROL TRAVERSES, USING A WILD T-16 THEODOLITE AND A DI-4L E.D.M., WERE RUN BETWEEN THE CONTROLLING CORNERS FOUND IN THE FIELD. SAID SECTION 26 WAS THEN SUBDIVIDED ACCORDING TO THE MANUAL OF INSTRUCTION FOR THE SURVEY OF THE PUBLIC LANDS OF THE UNITED STATES. THE CENTER 1/4 CORNER, POINT "F", WAS COMPUTED AS BEING AT THE POINT OF INTERSECTION OF THE NORTH-SOUTH AND EAST-WEST CENTERLINES OF SAID SECTION 26. A CLOSED RANDOM PROPERTY LINE TRAVERSE, USING A WILD T-16 THEODOLITE AND A DI-4L E.D.M., WAS RUN ALONG ALL PROPERTY LINES TO BE BLAZED AND POSTED. OFFSETS WERE COMPUTED FROM THIS PROPERTY LINE TRAVERSE TO THE TRUE PROPERTY LINE. PROPERTY LINES WERE MARKED WITH RED PAINTED BLAZES, RED RIBBON AND GREEN METAL FENCE POSTS. THE EAST 1/16 CORNER, MONUMENT "X", WAS SET HALFWAY BETWEEN FOUND MONUMENTS "C" AND "D" AS SHOWN. THE SOUTH 1/16 CORNER, MONUMENT "Y", WAS SET HALFWAY BETWEEN FOUND MONUMENTS "D" AND "E" AS SHOWN. THE SE 1/16 CORNER, MONUMENT "Z", WAS SET AT THE POINT OF INTERSECTION OF THE NORTH-SOUTH AND EAST-WEST CENTERLINES OF SAID SE 1/4.

MAP FILE M123-60

MAP FILE M123-60