

# LONE ROCK TIMBER CO.

PO BOX 1127 ROSEBURG OREGON 97470 DATE: MARCH 1996  
 SECTION 34, TOWNSHIP 29 SOUTH, RANGE 09 WEST, W.M. DOUGLAS COUNTY, OREGON  
 LONE ROCK TIMBER TRACT: IP 29-9-34 SCALE 1" = 600'

**COUNTY SURVEYORS FILE DATA**  
**DO NOT REMOVE FROM OFFICE**

FILED  
 Date: 4-29-96 By: JC  
 This survey consists of:  
 Map: M 123-59  
 Narrative:  
 Corner Rpt:

DOUGLAS COUNTY SURVEYOR  
 pc

MAP FILE M 123-59

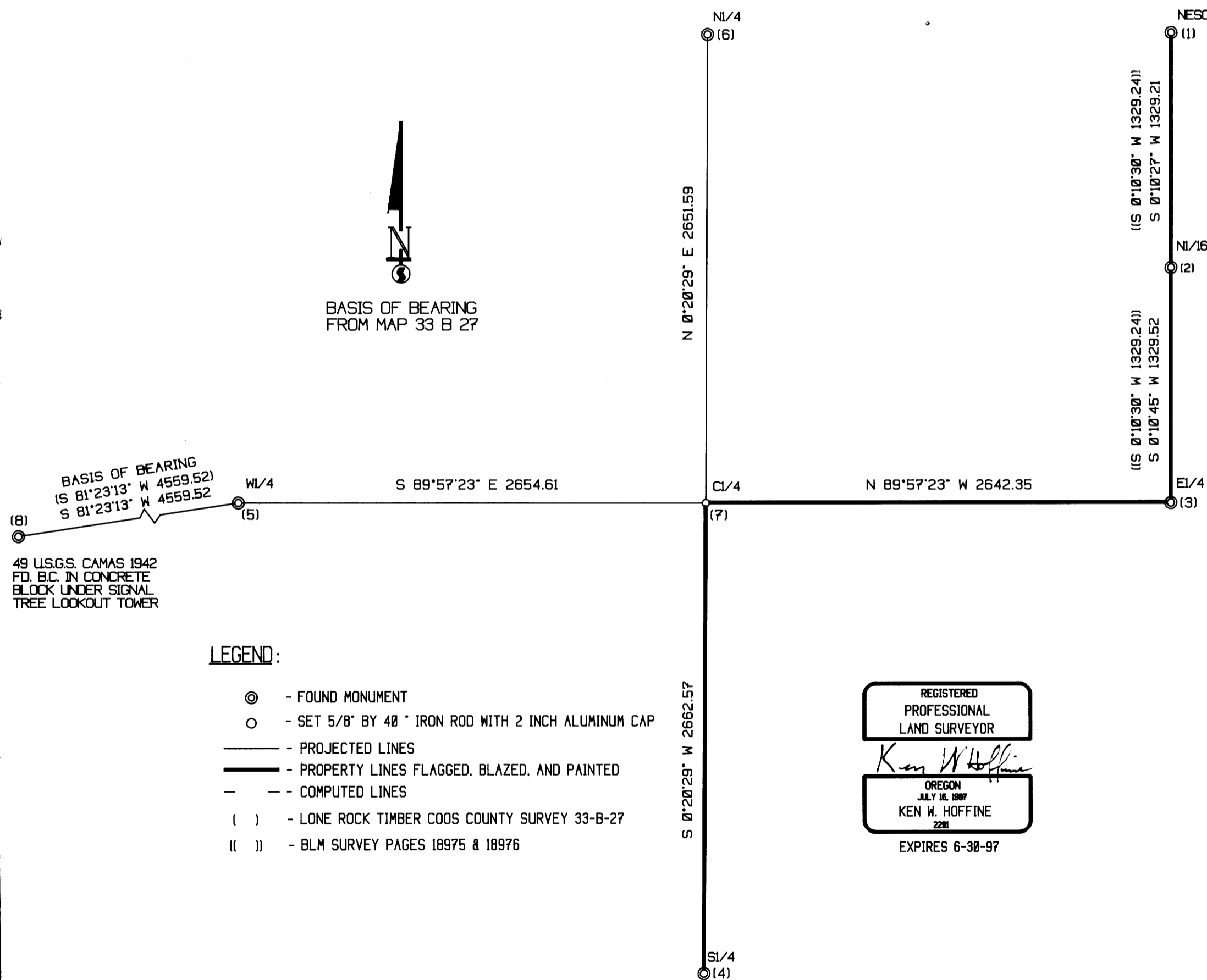
### NARRATIVE

THIS SURVEY WAS CONDUCTED TO ESTABLISH PROPERTY LINES FOR TIMBER CUTTING PURPOSES. THE SURVEY WAS INITIATED AT THE NORTHEAST CORNER OF SECTION 34 A COUNTY BCIP SET FROM ORIGINAL EVIDENCE. WE BEGAN A RANDOM TRAVERSE SOUTHERLY TO THE NORTH 1/16 CORNER BETWEEN SECTIONS 34 AND 35, T29S, R9W A BLM BCIP, CONTINUING SOUTHERLY TO THE EAST 1/4 OF SECTION 34 A COUNTY BCIP SET FROM ORIGINAL EVIDENCE. WE CONTINUED OUR SURVEY WESTERLY TO A POINT NEAR THE C1/4 CORNER OF SECTION 34, A HEMLOCK SNAG TAGGED BY ROSEBURG LUMBER FROM STAFF COMPASS INTERSECTION BETWEEN 1/4 CORNERS. WE THEN TRAVERSED SOUTHERLY TO THE SOUTH 1/4 OF SECTION 34 A COUNTY BCIP SET FROM ORIGINAL EVIDENCE. WE THEN WERE ABLE TO TRAVERSE WITH A LONG SHOT ACROSS THE CANYON NORTHERLY TO THE NORTH 1/4 OF SECTION 34, A COUNTY BCIP SET FROM ORIGINAL EVIDENCE. FROM THE N1/4 ON TOP OF A RIDGE WE WERE THEN ABLE TO TRAVERSE TO PERMANENT CONTROL POINTS WE HAD SET TO TIE THE EAST 1/4 SECTION 34 AND "CAMAS 2" STATION ON THE TOP OF SIGNAL TREE MOUNTAIN AS RECORDED ON COOS COUNTY SURVEY MAP # 33-B-27. FROM "CAMAS 2" WE WERE THEN ABLE TO TRAVERSE TO A BACKSITE POINT NEAR THE NORTHEAST CORNER OF SECTION 34 AND CLOSE OUR SURVEY. BASED ON OUR CALCULATIONS WE SET THE PROPER CENTER 1/4 FOR SECTION 34 MARKING PROPERTY LINES AS SHOWN HEREON. THIS SURVEY WAS DONE WITH A LIETZ SET 2 TOTAL STATION WITH GARY ANGIOLET AND GERALD RAGON ASSISTING ME.

### CORNER INFORMATION

THE FOLLOWING IS A RECORD OF ALL CORNERS FOUND OR SET DURING THE COURSE OF THIS SURVEY.

- 1) NORTHEAST SECTION CORNER OF SECTION 34  
 FOUND 1959 COUNTY BRASS CAP 1.0 FEET ABOVE GROUND.  
 -- 24" LOW STUMP SCRIBING VISIBLE "T" BEARS N13°W, 28.7 FEET (RECORD N14°W, 27.72 FEET)  
 -- 18" DOUGLAS FIR BEARS N79 3/4°W, 35.0 FEET (RECORD N80°W, 34.98 FEET) WELL HEALED FACE, BLM TAG  
 -- 13 1/2" WHITE FIR SNAG BEARS S52 1/2°W, 23.7 FEET (RECORD S57°W, 23.76 FEET) WELL HEALED FACE AND BLM TAG  
 -- 14" DOUGLAS FIR BEARS S0 1/2°W, 46.4 FEET (RECORD S2°W, 47.52 FEET) WELL HEALED FACE AND BLM TAG  
 -- 20" MAPLE BEARS S55 3/4°E, 28.9 FEET (RECORD S57°E, 29.37 FEET) 2 BLM TAGS  
 -- 24" WHITE FIR BEARS N61 1/4°E, 88.4 FEET AS PER RECORD, WELL HEALED FACE AND BLM TAG  
 CORNER LOCATED AT FENCE JUNCTION (FENCE LINE BEARS NORTH, SOUTH, EAST, AND WEST) AND UNDER POWER LINE.
- 2) NORTH 1/16 CORNER BETWEEN SECTIONS 34 AND 35  
 FOUND 1990 BLM BRASS CAP IN GOOD CONDITION.  
 -- 12" DOUGLAS FIR BEARS S77°W, 20.7 FEET (RECORD S78°W, 20.79 FEET) WELL HEALED FACE AND BLM TAG  
 -- 11" DOUGLAS FIR BEARS N39 1/4°E, 24.1 FEET (RECORD N39 1/2°E, 23.76 FEET) WELL HEALED FACE AND BLM TAG  
 CORNER LIES IN SMALL TIMBER APPROXIMATELY 60 FEET SOUTH OF GRASSY FIELD AREA, AT TOE OF SLOPE.
- 3) EAST 1/4 CORNER OF SECTION 34  
 FOUND 1957 DOUGLAS COUNTY SURVEYORS BRASS CAP IN GOOD CONDITION.  
 -- 11" DOUGLAS FIR BEARS N30°E, 8.9 FEET (RECORD N30 1/4°E, 9.24 FEET) PARTIAL SCRIBING VISIBLE AND BLM TAG  
 -- 13" DOUGLAS FIR BEARS N66 1/2°W, 9.3 FEET (RECORD N57 1/4°W, 9.24 FEET) WELL HEALED FACE AND BLM TAG  
 CORNER LIES IN SMALL TREES AT SOUTHEAST EDGE OF GRASSY AREA.
- 4) SOUTH 1/4 CORNER OF SECTION 34  
 FOUND 1959 DOUGLAS COUNTY SURVEYORS BRASS CAP IN GOOD CONDITION.  
 -- 6 1/2" DOUGLAS FIR BEARS S67°W, 10.8 FEET (RECORD UNKNOWN) WELL HEALED FACE AND BLM TAG  
 -- 14" DOUGLAS FIR BEARS N26 1/2°E, 18.8 FEET (RECORD N28°E, 18.8 FEET) WELL HEALED FACE AND BLM TAG  
 -- 26" OR. B.T. VERY ROTTEN STUMP BEARS S24°W 27.5 FEET (RECORD S25°W 26.4 FEET)  
 CORNER IS 1.5 FEET ABOVE GROUND ON STEEP EAST FACING SLOPE, 190 FEET SOUTH OF RIDGE WITH OLD SKID ROAD AND LOCATION TAG.
- 5) WEST 1/4 CORNER SECTION 34  
 FOUND COOS-DOUGLAS COUNTY CAP SET 1957 IN GOOD CONDITION.  
 -- 33" DOUGLAS FIR BEARS S16 1/2°W, 21.2 FEET (RECORD S20°W, 22.4 FEET) WELL HEALED FACE AND TAG  
 -- 18" CEDAR BEARS S25°E, 14.5 FEET (RECORD S20°E, 14.8 FEET) WELL HEALED FACE AND TAG  
 -- 30" CEDAR BEARS N85°W, 22.5 FEET (RECORD N85°W, 22.2 FEET) WELL HEALED FACE AND TAG  
 CORNER LIES IN SHALLOW HOLLOW ON NORTH FACING SLOPE.
- 6) THE NORTH 1/4 CORNER OF SECTION 34  
 FOUND 1959 DOUGLAS COUNTY SURVEYORS BRASS CAP IN GOOD CONDITION.  
 -- 11" DOWN FIR SNAG BEARS S25 1/4°W, 15.2 FEET (RECORD S26°W, 15.2 FEET)  
 -- 16" CEDAR BEARS S66°W, 29.2 FEET (RECORD S67°W, 29.4 FEET) WELL HEALED FACE AND TAG  
 -- 20" CEDAR BEARS N59 1/2°W, 5.2 FEET (RECORD N58°W, 5.3 FEET) HEALED FACE  
 CORNER LIES 1.2 FEET ABOVE GROUND, 2.0 FEET SOUTH OF FENCE JUNCTION WITH FENCE RUNNING EAST-WEST AND NORTH FROM CORNER
- 7) CENTER 1/4 CORNER OF SECTION 34  
 SET 5/8" X 40" IRON ROD WITH 2 1/2" ALUMINUM CAP MARKED LONE ROCK TIMBER T29S R9W C1/4 S34 1996 PLS 2291.  
 -- 15" DOUGLAS FIR BEARS N29°W, 37.7 FEET, WE SCRIBED C1/4 S34 B.T. AND TAG TREE  
 -- 10 1/2" DOUGLAS FIR BEARS N59 1/2°E, 35.55 FEET, WE SCRIBED C1/4 S34 B.T. AND TAG TREE  
 -- 12" DOUGLAS FIR BEARS S28°E, 27.1 FEET, WE SCRIBED C1/4 S34 B.T. AND TAG TREE  
 -- 15" DOUGLAS FIR BEARS S34°E, 39.2 FEET, WE SCRIBED C1/4 S34 B.T. AND TAG TREE  
 -- 12" WHITE FIR SNAG WITH LOCATION TAG FOR APPROXIMATE C1/4 BEARS S72 1/2°W, 37.8 FEET  
 CORNER SITS ON FLAT BENCH APPROXIMATELY 250 FEET WEST OF CREEK.
- 8) CAMAS NO. 2 TRI STATION  
 FOUND BRASS CAP SET IN CEMENT UNDER SIGNAL TREE LOOKOUT TOWER.



MAP FILE M 123-59