

APPROVALS:  12-13-95  
 COMMUNITY DEVELOPMENT DIRECTOR DATE  
 PLANNING DEPT. FILE NO.: BLA-95-15

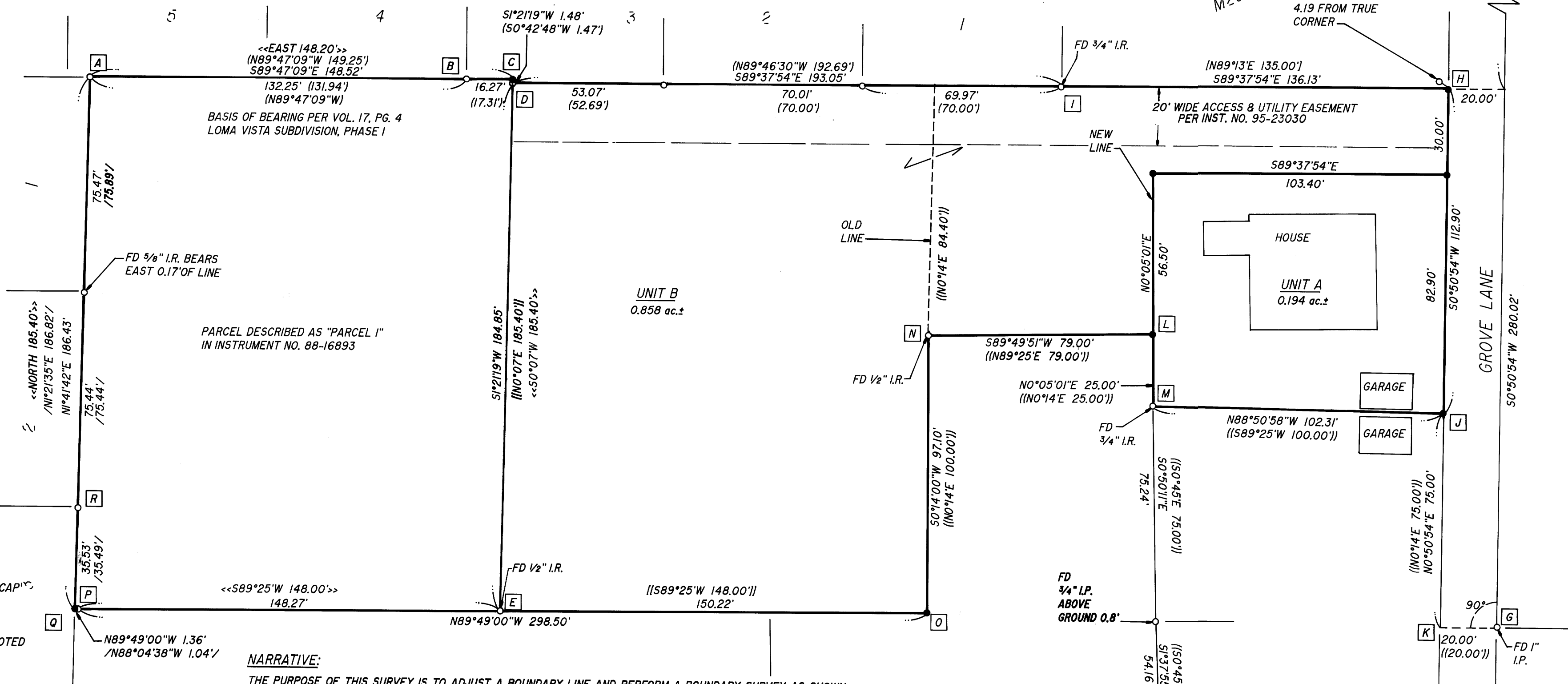
COMP. PLAN: MEDIUM DENSITY RESIDENTIAL  
 ZONE: MR-14  
 WATER: CITY OF ROSEBURG  
 SEWER: R.U.S.A.

COUNTY SURVEYORS FILE DATA  
 DO NOT REMOVE FROM OFFICE

FILED  
 Date: 12/18/95 By: BC  
 This survey consists of:  
 Map: M123-5  
 Narrative:  
 Correr Rpt: \_\_\_\_\_

DOUGLAS COUNTY SURVEYOR  
 CB

LOMA VISTA SUBDIVISION, PHASE I  
 BLOCK 3



- LEGEND:  
 ● SET 3/8" x 30" I.R. w/ CAP MKD "I.E. ENG."  
 ○ FD 3/8" I.R. UNLESS OTHERWISE NOTED

- RECORD DATA:  
 ( ) LOMA VISTA SUBDIVISION, PHASE I VOLUME 17, PAGE 4  
 [ ] M29-8  
 << M120-5  
 // LOMA VISTA SUBDIVISION, PHASE II VOLUME 17, PAGE 36  
 (//) C.S. 51/241-9  
 (//) INSTRUMENT NO. 88-13952  
 <<< INSTRUMENT NO. 88-16893



NARRATIVE:  
 THE PURPOSE OF THIS SURVEY IS TO ADJUST A BOUNDARY LINE AND PERFORM A BOUNDARY SURVEY AS SHOWN HEREON. FOR THE BASIS OF BEARING, POINTS [A] & [B] WERE USED PER LOMA VISTA SUBDIVISION, PHASE I. POINT [C] WAS DETERMINED BY INTERSECTING THE BASIS OF BEARING LINE WITH THE LINE CREATED BY POINT [D] & [E]. POINT [F] WAS DETERMINED BY TURNING THE RECORD ANGLE LEFT FROM THE WEST LINE OF M120-5 AND RUNNING THE RECORD DISTANCE PER M120-5. USING POINT [F] AND THE FOUND MONUMENT AT POINT [G] FOR THE EAST RIGHT-OF-WAY OF GROVE LANE, THE WEST RIGHT-OF-WAY OF GROVE LANE WAS DETERMINED BY HOLDING PARALLEL 20 FEET. POINT [H] WAS CALCULATED BY EXTENDING THE LINE FROM POINT [D] TO POINT [I] TO ITS INTERSECTION WITH THE WEST RIGHT-OF-WAY OF GROVE LANE. POINT [J] WAS DETERMINED BY FIRST ESTABLISHING POINT [K] ADJACENT TO POINT [G] THEN TRAVERSING ALONG THE CALCULATED WEST RIGHT-OF-WAY THE RECORD DISTANCE PER C.S. 51/241-9. POINT [L] WAS CALCULATED BY DISTANCE-DISTANCE INTERSECTION FROM POINTS [M] AND [N] PER C.S. 51/241-9. POINT [O] WAS DETERMINED BY BEARING-BEARING INTERSECTION FROM THE LINE CREATED BY POINTS [P] & [E] AND FROM POINTS [N] PER C.S. 51/241-9. POINT [Q] WAS CALCULATED BY BEARING-BEARING INTERSECTION FROM THE LINE CREATED BY POINT [E] & [P] AND THE LINE CREATED BY POINT [A] & [R].

FIELD CREW: WENDELL HARNESS & TIM ADAMS  
 EQUIPMENT: NIKON TOP GUN TOTAL STATION  
 OFFICE: WENDELL T. HARNESS  
 DRAFTING: TIM ADAMS

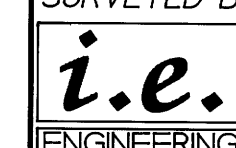
REGISTERED OREGON LAND SURVEYOR  
  
 JULY 12, 1968  
 DONALD A. BENTZ  
 839

EXPIRES 12-31-95

BOUNDARY LINE ADJUSTMENT & BOUNDARY SURVEY

IN THE NE 1/4 OF THE NE 1/4 SEC. 15, T27S, R6W, W.M., DOUGLAS COUNTY, OREGON

SURVEYED FOR:  
 HARRY RUCHABER, JR.  
 BOX 1060  
 WINSTON, OREGON 97496

SURVEYED BY:  
  
 548 S.E. Jackson Suite 3  
 Roseburg, Oregon 97470  
 PHONE (503) 673-0166  
 FAX (503) 440-9392

SCALE: 1" = 30'

DATE: DEC. 1995

999-03

PAGE: 1 OF 1

MAP FILE M 123-5

MAP FILE M 123-5